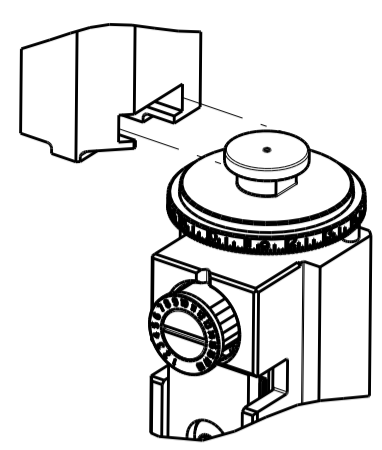
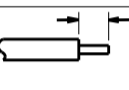


ATLANTIC VERSION TERMINATOR INTERFACE ADAPTER	PART NUMBER	REVISION	DESCRIPTION	FEED TYPE	APPLICATOR STYLE CONVERSION CHART						
					CONVERT TO	PART NUMBERS REQUIRED					
	2266098-1	A	FINE CRIMP HEIGHT ADJUST	MECHANICAL	PNEUMATIC FEED	2119950-1	1338685-1	5-18022-5	2119641-1	2119799-1	2063440-1
	2266098-2	A	FINE CRIMP HEIGHT ADJUST	PNEUMATIC	SERVO LATCH PLATE	2119951-1	-	8-2266098-5	1901094-3	-	2168400-6 (QUANTITY 2)
					SMART APPLICATOR	2161326-1	-	8-2266098-4	-	-	
					MECHANICAL FEED	2119949-1	1338685-1	5-18022-5	2119653-1	-	-
	2266098-5	A	FINE CRIMP HEIGHT ADJUST	SERVO LATCH PLATE	SERVO LATCH PLATE	2119951-1	-	8-2266098-5	1901094-3	-	2168400-6 (QUANTITY 2)
					SMART APPLICATOR	2161326-1	-	8-2266098-4	-	-	
					MECHANICAL FEED	2119949-1	1338685-1	5-18022-5	2119653-1	-	-
	2266098-6	A	NON-CRIMP HEIGHT ADJUST	SERVO LATCH PLATE	PNEUMATIC FEED	2119950-1	1338685-1	5-18022-5	2119641-1	2119799-1	2063440-1
					-	-	-	-	-	-	
	2266098-7	A	FINE CRIMP HEIGHT ADJUST	NONE	-	-	-	-	-	-	-
	7-2266098-7	A	CRIMP TOOLING KIT	-	-	-	-	-	-	-	-

APPLICATOR DATA		
CRIMP	SIZE	TYPE
WIRE	2.46 mm [.097]	F
INSUL	4.60 mm [.181]	O

APPLICATOR INSTRUCTIONS 408-10389

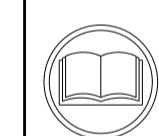
TERMINAL DATA: DELPHI TERMINAL DELPHI CRIMP SPECIFICATION
TERMINAL NAME: DELPHI TERMINAL

WIRE STRIP LENGTH	INSULATION DIAMETER RANGE
4.80-5.56 mm [.189-.219 IN]	

TERMINAL APPLICATION SPECIFICATION DELPHI SPEC

TE TERMINAL	DELPHI TERMINAL	TE SEAL	DELPHI SEAL	SEAL Ø
2113389-1	12077412	1949807-1	15324982	2.03-2.85
		1949807-2	15324984	2.03-2.42

WIRE SIZE	CRIMP HEIGHT mm [INCH]	CRIMP HEIGHT REFERENCE SETTING
1.50mm2	1.80+/-0.05 [1.071+/-0.002]	8.2
1.00mm2	1.70+/-0.05 [1.067+/-0.002]	9.3



- RECOMMENDED SPARE PARTS
- GREASE BEARING SURFACES LIGHTLY
- LUBRICATE DAILY PER THE APPLICATOR INSTRUCTION SHEET SUPPLIED WITH THE APPLICATOR.
- APPLICATOR SPECIFIC DATA TO BE ENTERED INTO BLANK MEMORY CHIP AT ASSEMBLY. SEE BELOW FOR PART NUMBER:
 - MECHANICAL FEED WITH "SMART APPLICATOR" CONVERSION: 8-2266098-4
 - PNEUMATIC FEED WITH "SMART APPLICATOR" CONVERSION: 8-2266098-5
 - SERVO FEED WITH "FINE CRIMP HEIGHT ADJUST": 8-2266098-5
 - SERVO FEED WITH "NON-CRIMP HEIGHT ADJUST": 8-2266098-6
- ADJUSTMENT OF THE STRIPPER MAY BE REQUIRED WHEN MOVING THE APPLICATOR BETWEEN BENCH AND LEADMAKER APPLICATIONS.
- APPLY PART NUMBER 1-23419-5 LOCTITE TO THREADS OF ITEMS 62 & 242. FOR -6 ONLY APPLY PART NUMBER 1-23419-5 LOCTITE TO THREADS OF ITEMS 37 & 242.
- GREASE THREADS, GROOVE AND O-RING ON ITEMS 35 & 252.
- MAGNET, ITEM 166 MUST BE ORIENTED CORRECTLY IN ORDER TO PROPERLY ACTUATE THE COUNTER.
- CRIMP HEIGHT REFERENCE SETTING WAS THE SETTING USED WHEN THE APPLICATOR WAS QUALIFIED AT THE FACTORY. ADJUSTMENT MAY BE NECESSARY WHEN RUNNING APPLICATOR IN THE FIELD.
- SPARE FEED CAM STORAGE LOCATION REFER TO INSTRUCTION SHEET FOR ADDITIONAL INFORMATION.
- TO CONVERT THE APPLICATOR TO A NON-CARRIER CUTTING STYLE, REMOVE ITEM 13 AND ATTACH TO THE LOCATION ON THE BACK SIDE OF THE HOUSING. REFER TO INSTRUCTION SHEET FOR ADDITIONAL INFORMATION.
- WHEN ASSEMBLING A NON CRIMP HEIGHT ADJUST APPLICATOR (-6) USE SHIMS FROM ITEM 260 TO ACHIEVE A NOMINAL SHIM HEIGHT OF 4.00.
- THIS APPLICATOR APPLIES TERMINAL WITH A SEAL.
- APPLY TORO-SEAL IN ALLEN SOCKET TO FILL HOLE AFTER FLAT HD HAS BEEN ADJUSTED TO CORRECT HEIGHT AT QUALIFICATION. APPLY #1-23419-5 LOC-TITE TO THREADS.

*WARNING
ON INSTALLATION, SET WIRE DISC, ITEM 40 TO LARGEST WIRE SIZE SETTING. USE OF SETTINGS BELOW MINIMUM REQUIRED CRIMP HEIGHT SETTING WILL CAUSE DAMAGE TO CRIMP TOOLING.

-77	-7	-6	-5	-2	-1	PART NO	DESCRIPTION	ITEM NO
-	-	1	-	-	-	2119957-2	APPLICATOR SHIM PACK	260
-	1	-	1	1	1	8-21084-0	O-RING, .676 ID, .070 DIA. MAT.	252
-	-	-	-	1	-	2119640-1	PUSH ROD, AIR FEED	250

ATLANTIC VERSION
Shown on sheets 1 of 4 & 2 of 4
(Pacific version shown on sheets 3 of 4 & 4 of 4)

SET UP GAUGE	LOC	DIST	REVISIONS					
2119599-1	A	66	P	LTN	DESCRIPTION	DATE	OWN	APVD
			A		RELEASE	14JAN2013	XZ	TE

P	LTN	DESCRIPTION	DATE	OWN	APVD
-	-	2079988-1			249
-	-	2119641-1			248
-	1	2119798-1			247
-	1	1-22279-3			246
-	1	2119758-1			245
-	1	2119082-7			244
-	1	2079764-1			243
-	1	2119083-1			242
-	1	7-18023-7			241
-	2	2168400-6			240
-	-	2119580-1			239
-	-	2063440-1			238
-	1	2119740-2			213
-	1	1901094-3			198
-	-	21045-3			172
-	1	994969-1			166
-	REF	994970-2			164
-	-	240638-1			163
-	-	3-23627-7			137
-	-	2119799-1			136
-	REF	SEE NOTE 4			135
-	1	1633743-1			133
-	1	1-18028-2			119
-	REF	FEED FINGER ASSEMBLY,SF			117
-	1	455888-5			82
-	1	2119956-1			71
-	1	2119740-1			67
-	2	2168078-1			66
-	1	2119793-1			63
-	3	992763-5			62
-	1	2079383-4			60
-	-	5-18022-5			59
-	1	985575-3			57
-	-	1338685-1			56
-	4	2168400-1			54
-	2	2168083-3			53
-	1	5018030-1			52
-	1	811242-5			51
-	1	690753-2			50
-	-	18023-9			49
-	-	2119652-1			48
-	-	2119653-1			47
-	1	2119656-9			46
-	1	2119370-1			44
-	1	2079383-7			41
-	1	2119645-1			40
-	1	2119957-1			39
-	1	2119644-2			38
-	1	2119085-1			37
-	1	2119092-1			35
-	1	1752356-1			34
-	2	2079383-5			33
-	1	2161328-1			32
-	1	1-1320908-2			30
-	1	2119959-1			29
-	1	455888-3			28
-	1	1320928-2			24
-	1	2168083-2			21
-	1	1-18028-2			20
-	1	2119533-1			19
-	1	2119806-1			13
-	1	3-22280-3			12
-	1	1-356885-4			11
-	1	2119805-1			10
-	1	318707-1			9
-	1	3-1633928-7			8
-	1	1-240641-9			7
-	-	-			6
-	1	1-2119781-0			5
-	1	2-238011-1			4
-	1	6-1633965-6			3
-	1	455888-7			2
-	1	2-1633609-8			1

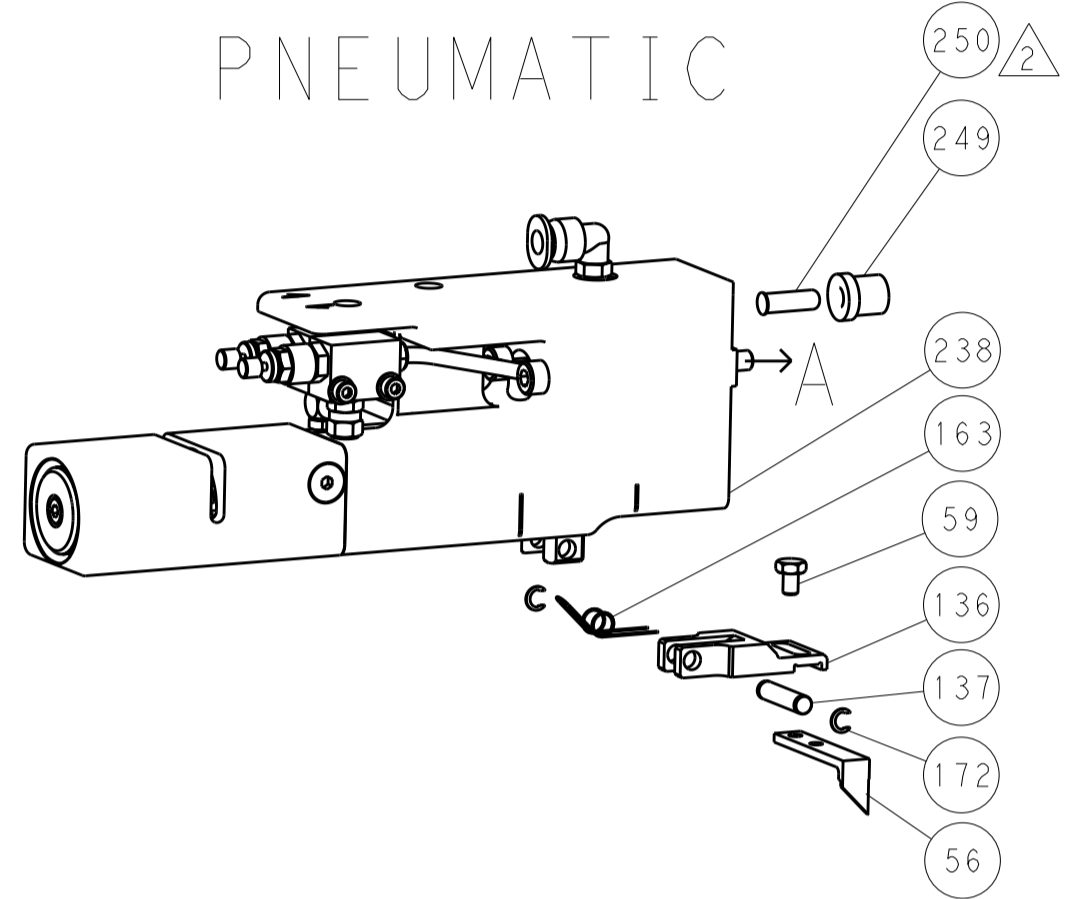
DIMENSIONS:	TOLERANCES UNLESS OTHERWISE SPECIFIED:	OWN	CHK	DATE	TE Connectivity
mm	0 PLC ±.5 1 PLC ±0.5 2 PLC ±0.13 3 PLC ±0.013 4 PLC ±0.001 ANGLES ±.1	X.ZHAO	T.ELBIN	01NOV2013	Harrisburg, PA 17105-3608
		L.ZHANG		01NOV2013	
		NAME		Ocean Side Feed Applicator	
		PRODUCT SPEC			
		APPLICATION SPEC			
		MATERIAL		SIZE CAGE CODE DRAWING NO RESTRICTED TO	
		FINISH		A1 00779 ©=2266098	
		WEIGHT		Customer Accessible Production Drawing SCALE 1:2 SHEET 1 of 4 REV A	

REVISONS		DATE	DWN	APVD
P. LTM	DESCRIPTION			
-	SEE SHEET 1	-	-	-

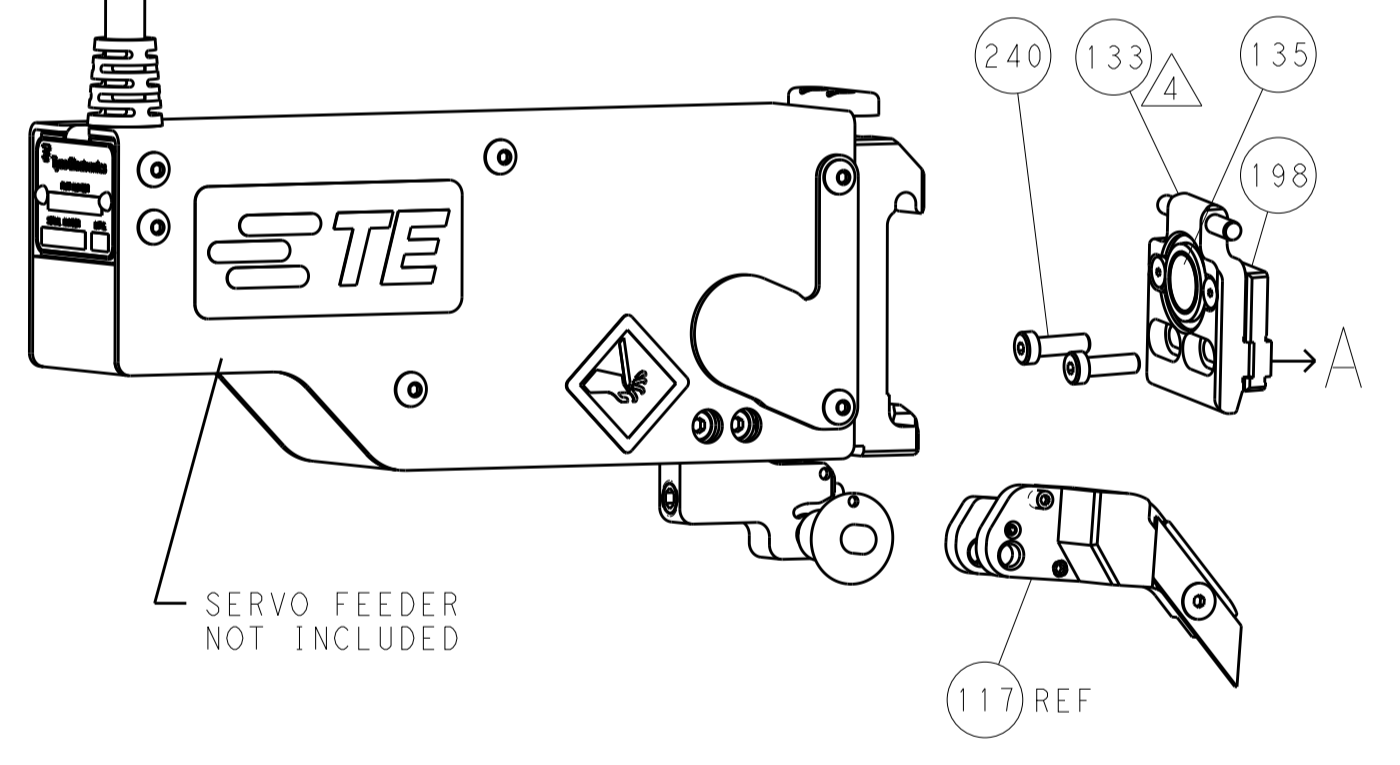
FEED TYPE MECHANICAL



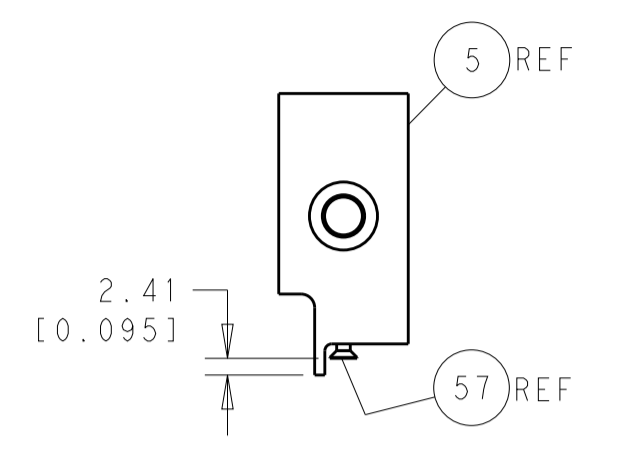
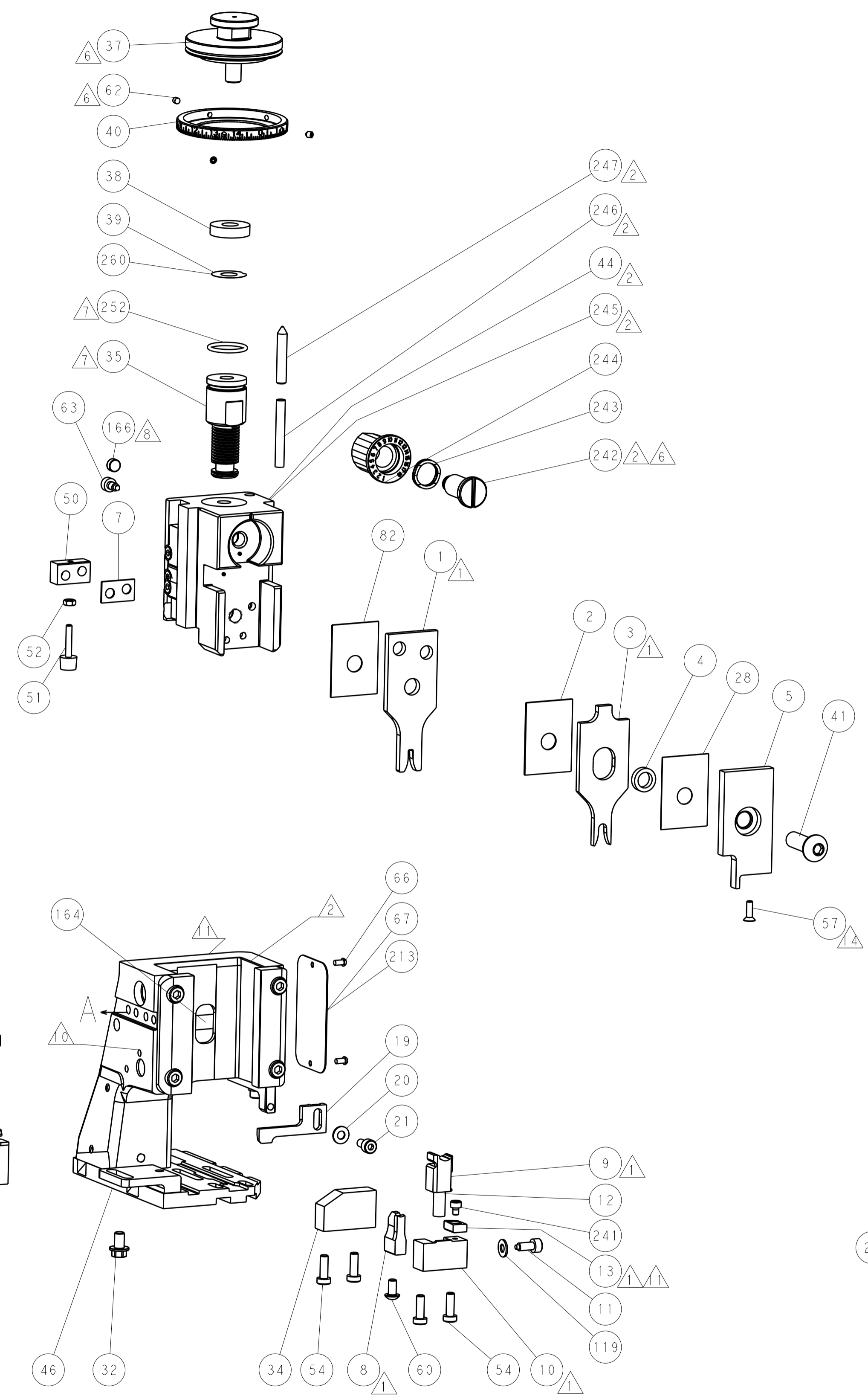
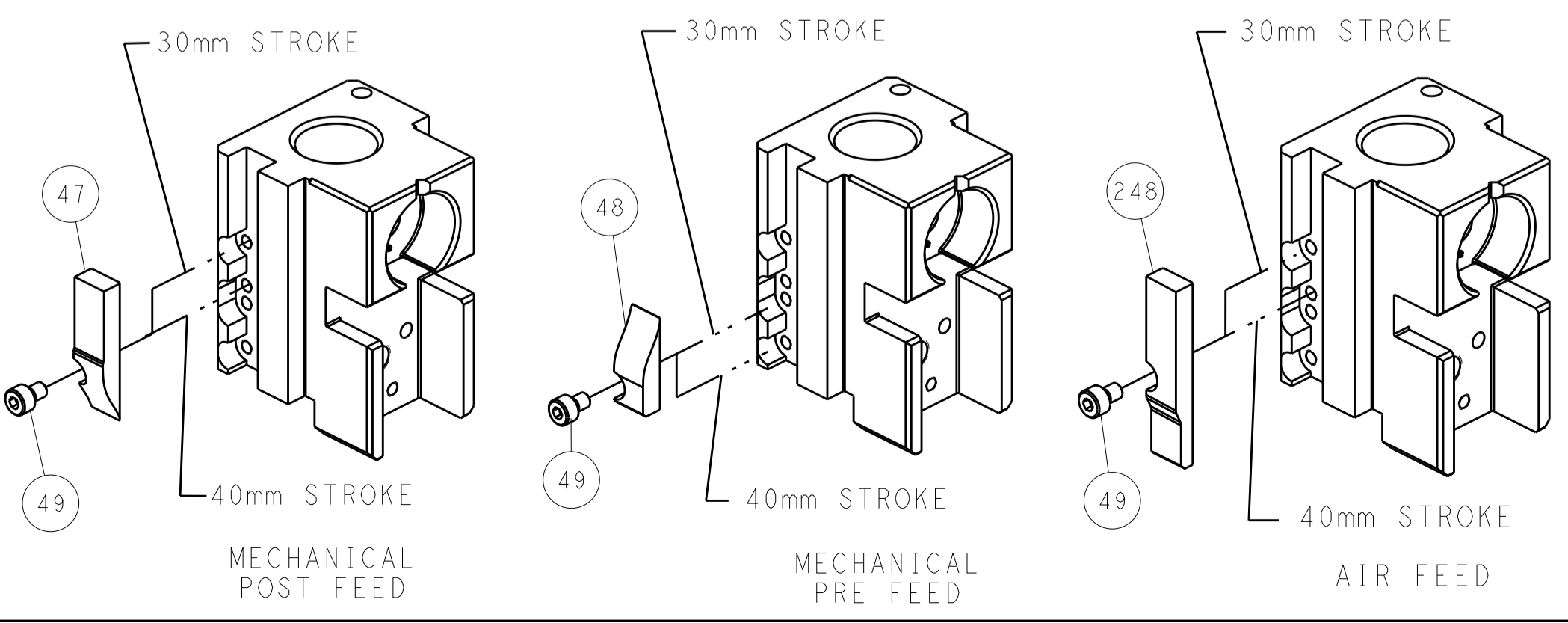
PNEUMATIC



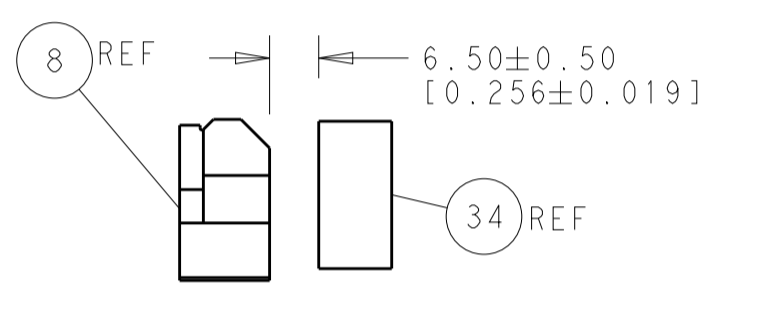
SERVO LATCH PLATE



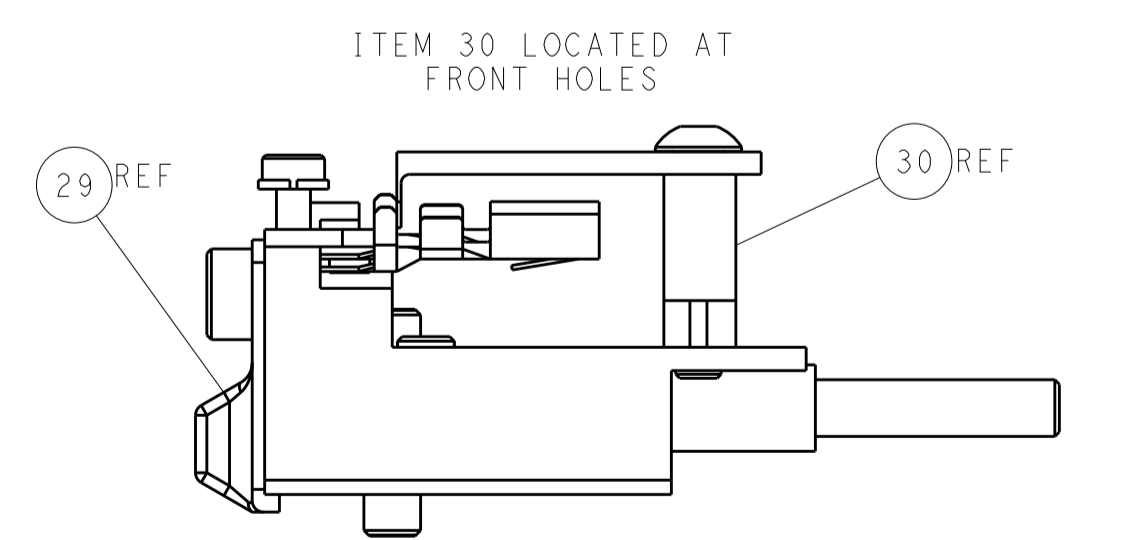
CAM POSITIONS



SHEAR DEPRESSOR DETAIL



TERMINAL SUPPORT LOCATION



ITEM 30 LOCATED AT FRONT HOLES



FEED TRACK POSITION GUIDE BY INSULATION BARREL

ATLANTIC VERSION
 Shown on sheets 1 of 4 & 2 of 4
 (Pacific version shown on sheets 3 of 4 & 4 of 4)

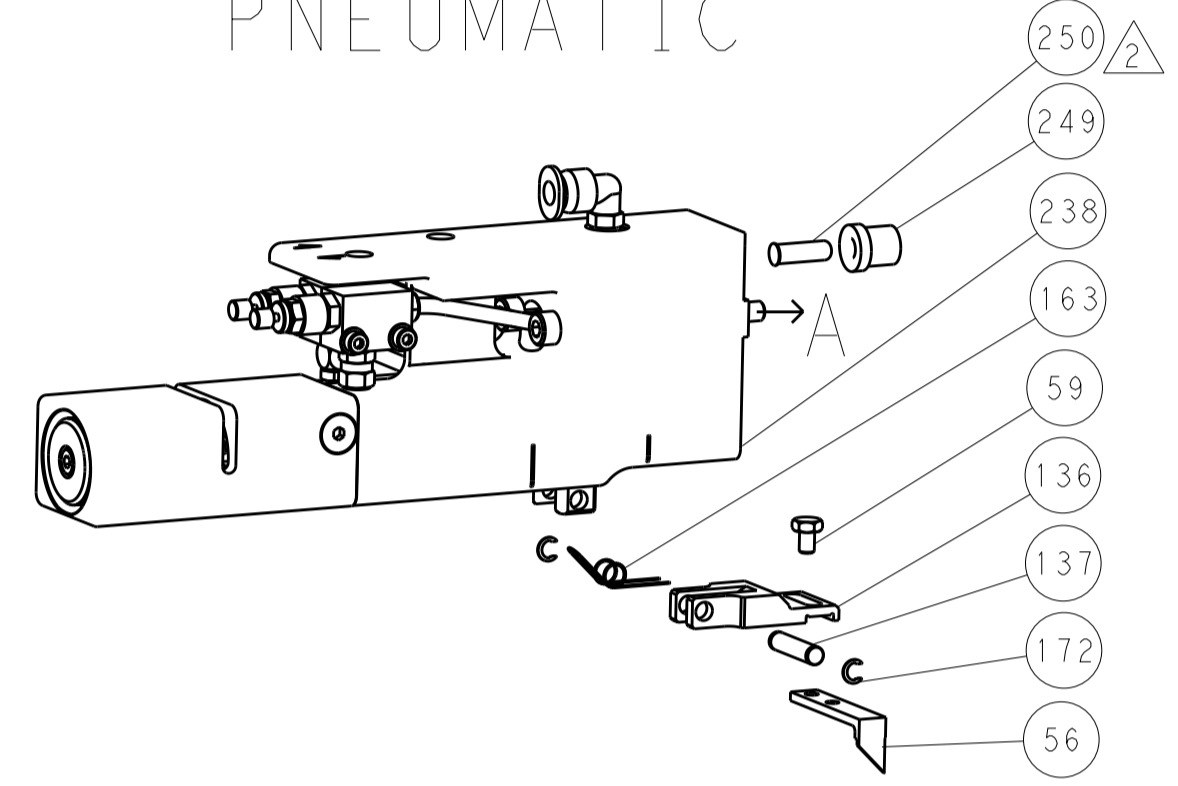
DIMENSIONS:		TOLERANCES UNLESS OTHERWISE SPECIFIED:		DWN X. ZHAO 01NOV2013		TE Connectivity	
mm	0 PLC ±0.5	1 PLC ±0.5	2 PLC ±0.13	3 PLC ±0.013	4 PLC ±0.001	APVD T. ELBIN 01NOV2013	Harrisburg, PA 17105-3608
MATERIAL:		FINISH:		NAME: Ocean Side Feed Applicator		RESTRICTED TO:	
Customer Accessible Production Drawing		SCALE: 1:2		SHEET 2 OF 4		REV A	

LOC		DIST		REVISIONS			
A	66	P	LTM	DESCRIPTION	DATE	OWN	APVD
-	-	-	-	SEE SHEET 1	-	-	-

FEED TYPE MECHANICAL



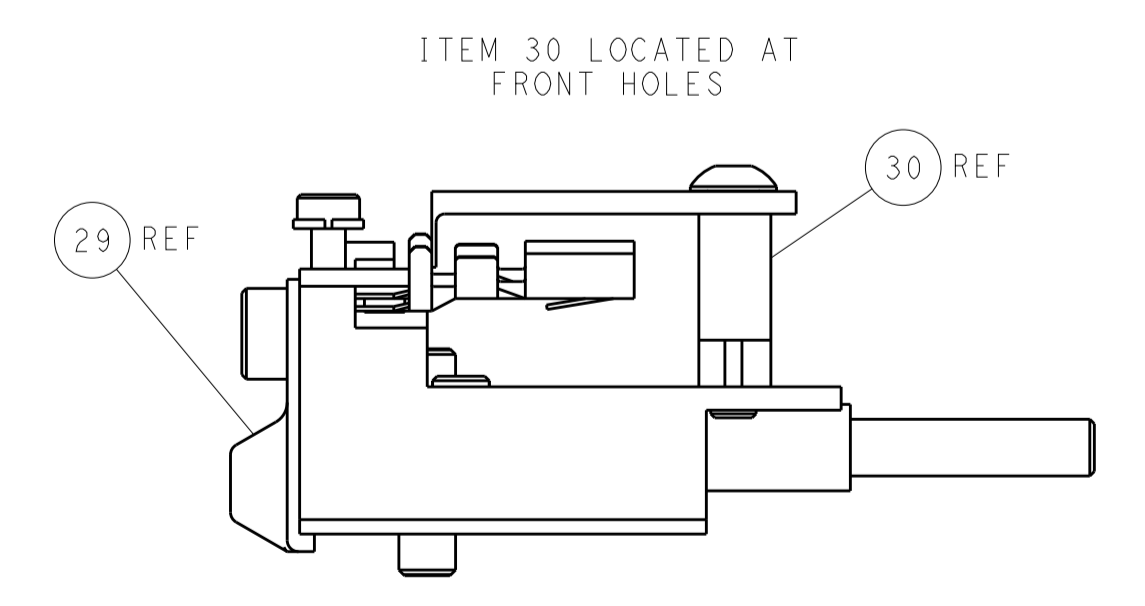
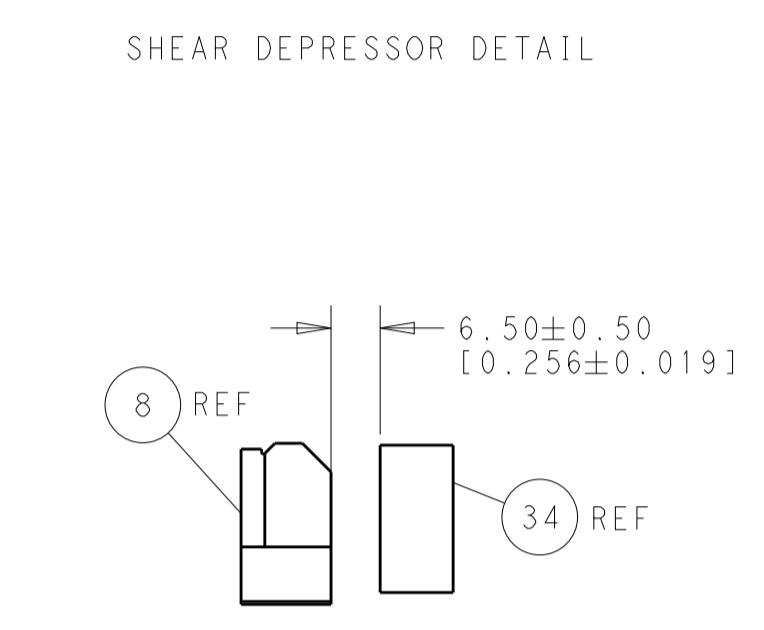
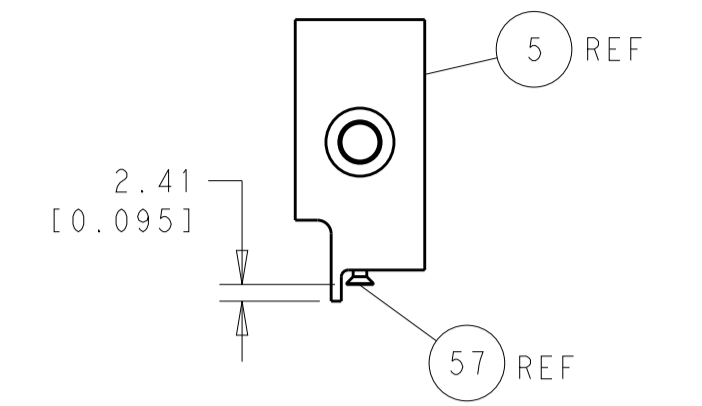
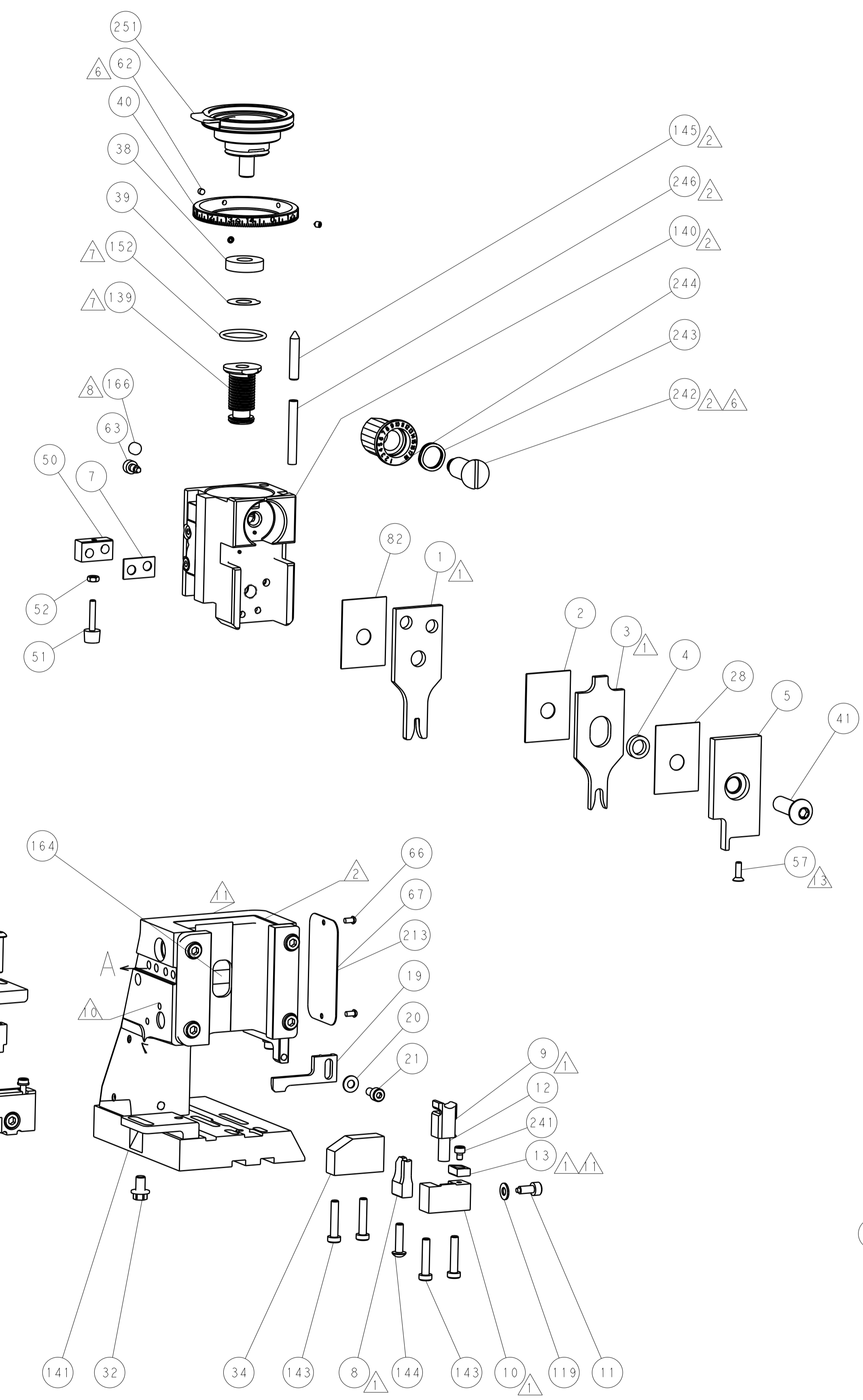
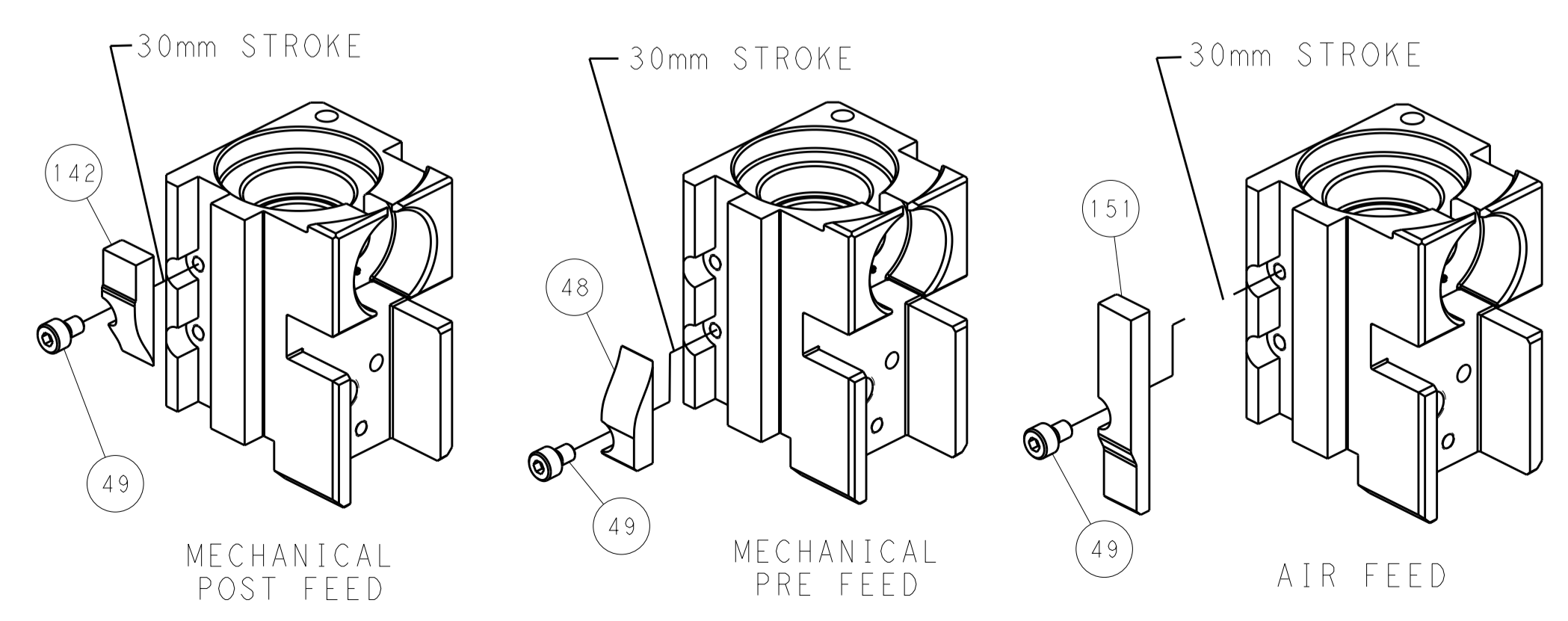
PNEUMATIC



SERVO LATCH PLATE



CAM POSITIONS



PACIFIC VERSION
 Shown on sheets 3 of 4 & 4 of 4
 (Atlantic version shown on sheets 1 of 4 & 2 of 4)

DIMENSIONS:		TOLERANCES UNLESS OTHERWISE SPECIFIED:		DWG: X_ZHAO 01NOV2013		REV: T_ELFIN 01NOV2013		NAME: I_ZHANG 01NOV2013		PRODUCT SPEC:		APVD:		SCALE: 1:2		SHEET 4 OF 4		REV A							
mm	0 PLC	±	0.5	0 PLC	±0.5	1 PLC	±0.13	2 PLC	±0.03	3 PLC	±0.013	4 PLC	±0.001	ANGLES	±	WEIGHT:	Customer Accessible Production Drawing	SCALE:	1:2	SHEET:	4	OF:	4	REV:	A