

# RF IMPEDANCE TRANSFORMER

## SURFACE MOUNT MODEL: TM4-GT

WIDE BANDWIDTH

5 - 1000 MHz

**FEATURES:**

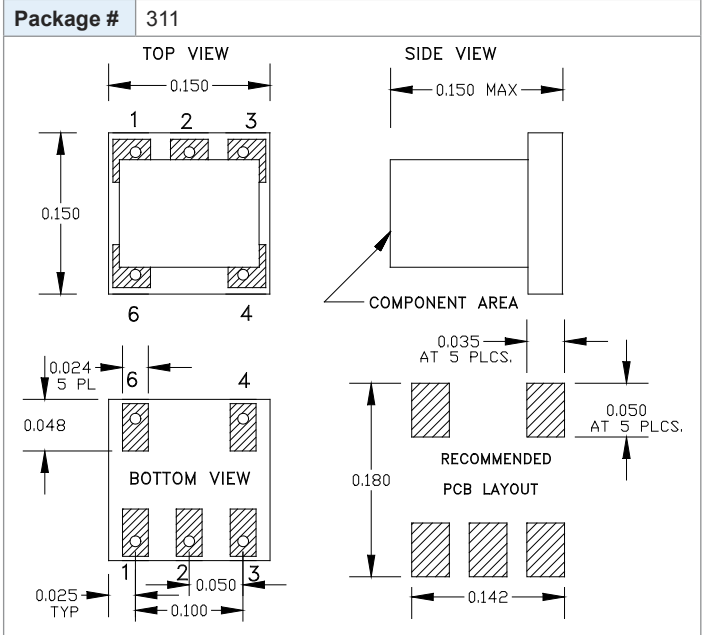
- ▶ Cost Effective
- ▶ Low Loss
- ▶ Small Size, Surface Mount
- ▶ RoHS Compliant
- ▶ Lead Free REL-PRO® Technology



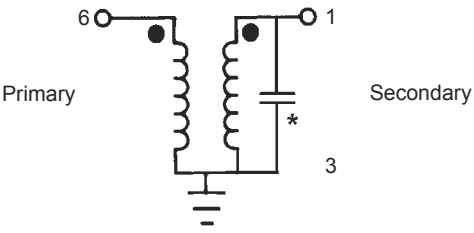
Part Identifier:  
White & Green Dot

**SPECIFICATIONS (Rev. A 05/07/07)**

Frequency	5 - 1000 MHz		
Impedance Ratio	4:1		
Insertion Loss (dB)	Frequency (MHz)	Typ.	Max.
	5 - 50	0.7	1.0
	50 - 500	0.8	1.2
	500 - 1000	1.2	1.6
Return Loss	15 dB (Typ.)		
Input Power	1 Watt (Max.)		
Input Impedance	50 Ohms (Nom.)		
Operating Temperature Range	-40 to +85 °C		
Storage Temperature Range	-55 to +100 °C		



PORT LOCATION		
Pri. Dot	Sec. Dot	Gnd.
6	1	3



\* Optional 3.3 pF capacitor



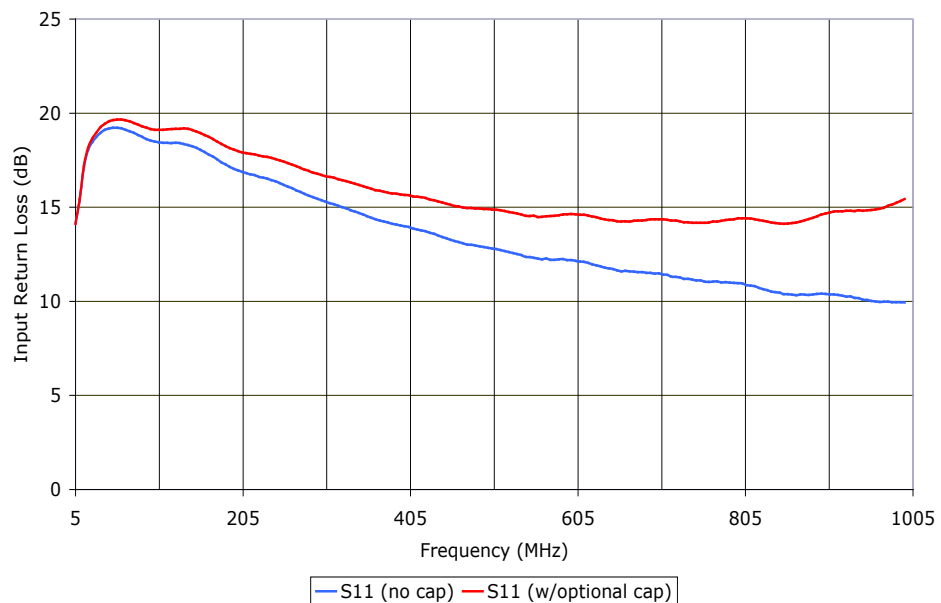
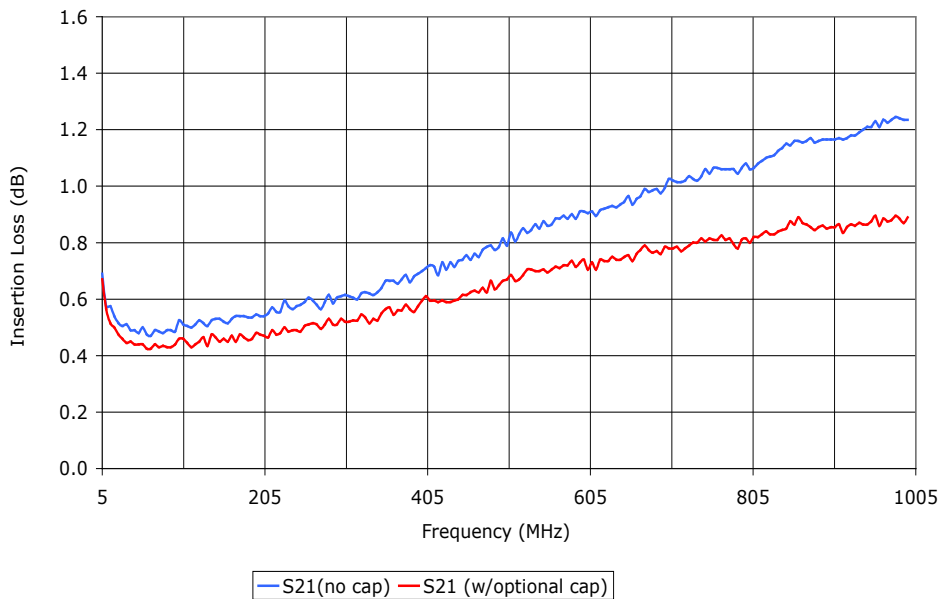
# RF IMPEDANCE TRANSFORMER

## SURFACE MOUNT MODEL: TM4-GT

WIDE BANDWIDTH

5 - 1000 MHz

Data @ 25°C



PERFORMANCE PLOTS

