

Features

- Three phase filter.
- High attenuation with low frequency area.
- Leak current lower than 1.0mA (250V_{AC}, 60Hz).

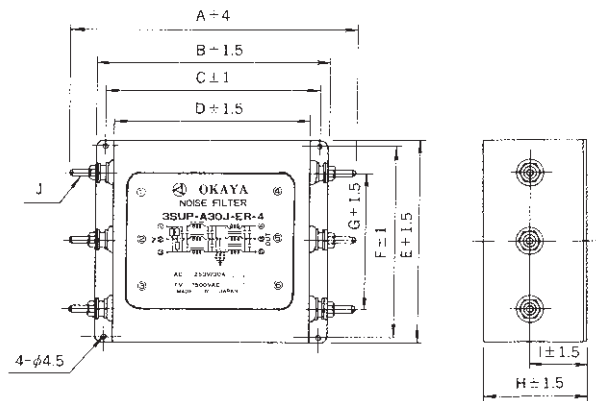
- 3SUP-A□J-ER-4 Series (screw terminal)

Applications

- Inverter power supplies, NC control systems and Welding machines.



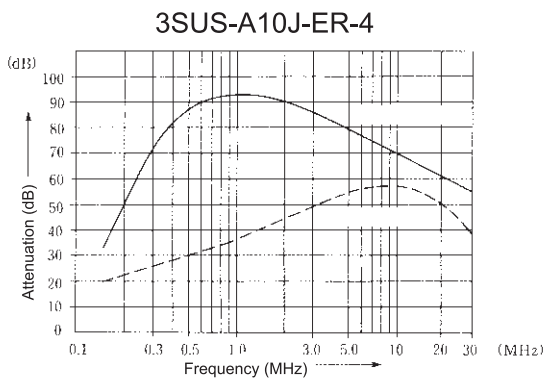
Dimensions



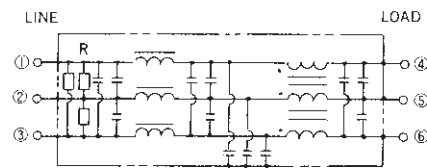
Unit: mm

Model number	A	B	C	D	E	F	G	H	I	J
3SUP-A5J-ER-4	153	135	120	105	120	105	80	55	25	M4
3SUP-A10J-ER-4	198	170	155	140	180	170	100	70	30	M5
3SUP-A15J-ER-4	223	195	180	165	180	170	100	70	30	M5
3SUP-A20J-ER-4	223	195	180	165	180	170	100	70	30	M5
3SUP-A30J-ER-4	223	195	180	165	180	170	100	70	30	M6

Static characteristics



Circuit



Bleeder resistor R: 1MΩ

Electrical Specifications

Rated Voltage **250VAC**

Model Number	Rated Current (A)	Test Voltage	Insulation Resistance	Leakage Current (max)	Voltage Drop (max)	Operating Temperature (°C)	Insertion losses	
							Normal Mode (MHz)	Common Mode (MHz)
3SUP-A5J-ER-4	5	Line to Line 1000Vrms 50/60Hz 60sec Line to Ground 1500Vrms 50/60Hz 60sec	Line to Ground 1000MΩmin (at 500V _{DC})	1mA (at 250Vrms 60Hz)	1.5Vrms	-10 ~ +50	0.2 ~ 10	0.4 ~ 20
3SUP-A10J-ER-4	10						0.3 ~ 20	0.4 ~ 20
3SUP-A15J-ER-4	15						0.3 ~ 10	0.5 ~ 10
3SUP-A20J-ER-4	20						0.3 ~ 10	1.0 ~ 10
3SUP-A30J-ER-4	30						0.4 ~ 20	2.0 ~ 20

Guaranteed attenuation is more than 60dB in normal mode and more than 30dB in common mode.