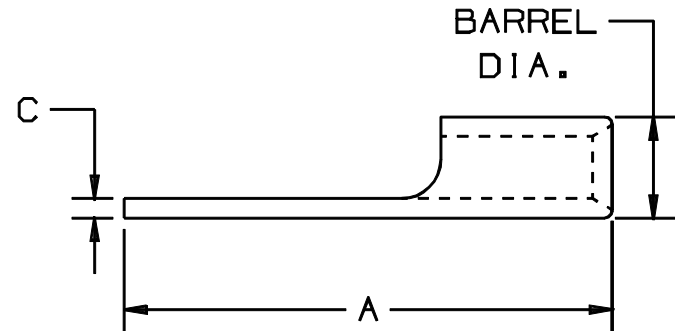
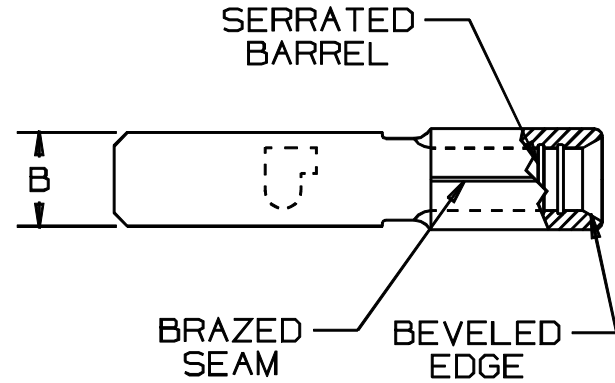


THIS COPY IS PROVIDED ON A RESTRICTED BASIS AND IS NOT TO BE USED IN ANY WAY DETRIMENTAL TO THE INTERESTS OF PANDUIT CORP.

PART NUMBER	WIRE RANGE AWG	BARREL DIA.	DIMENSIONS in.		
			A $\pm .015$	B $\pm .010$	C $\pm .010$
D18-145M	22-18	.14 (3.6)	.75 (19.0)	.145 (3.7)	.03 (0.76)
D14-145M	16-14	.16 (4.1)	.75 (19.0)	.145 (3.7)	.03 (0.76)



NOTES:

- UL RECOGNIZED AND CSA CERTIFIED FOR:
 - 347° F (175° C) MAX. TEMP. RATING
 - STRANDED COPPER WIRE ONLY
- MATERIAL:
 - STAMPING - .032" (0.76) THK COPPER, TIN PLATED
- PACKAGE QTY: STD. PKG. 100
BULK PKG. 1000
- DIMENSIONS IN BRACKETS ARE IN MILLIMETERS
- INSTALLATION TOOLS:
 - UL RECOGNIZED AND CSA CERTIFIED: CT-100, CT-200, CT-570, CT-1570
 - PANDUIT APPROVED: CT-160, CT-260



CERTIFIED
LR3122



RECOGNIZED
E76522

A41319_05

05	1/01	RM		FILESPEC WAS N41319AA_PCD_04						<p>TINLEY PARK, ILLINOIS</p> <p>NON-INSULATED MALE TAB .145 X .032 (3.68 X 0.81)</p>			
04	3/99	JKD		ADDED CT-1570 TOOL	07632								
03	4/94	DL	DL	REMOVED COIN FROM TAB END	03034	LCA	KS						
2	8-88	DW		REDRAWN WITH REVISIONS			JB						
REV	DATE	BY	CHK	DESCRIPTION	ECN	QA	CUST	PM	APP	DRAWN BY DAW	CHK'D CJH	SCALE NONE	DRAWING NO. A41319