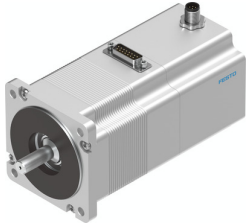


Stepper motor EMMS-ST-87-S-SEB-G2

Part number: 1370485

FESTO



Data sheet

Feature	Value
Step angle with full step	1.8 deg
Step angle tolerance	±5%
Type code	EMMS-ST
Rotor position sensor	Incremental encoder
Rotor position sensor interface	RS422 TTL A/B channels + zero index
Rotor position sensor measuring principle	Optical
Max. rotational speed	2130 1/min
Brake DC operating voltage	24 V
Insulation protection class	B
Brake power consumption	11 W
Nominal operating voltage DC	48 V
Motor nominal current	9.5 A
Phase winding resistance	0.1 Ohm
Winding inductance phase	0.45 mH
Voltage constant, phase	19 mVmin
Rating class according to EN 60034-1	S1
CE marking (see declaration of conformity)	As per EU EMC directive
Corrosion resistance class (CRC)	1 - Low corrosion stress
Storage temperature	-20 °C ... 70 °C
Relative air humidity	0 - 85 %
Degree of protection	IP54
Ambient temperature	-10 °C ... 50 °C
Thermal class according to EN 60034-1	B
Certification	RCM compliance mark c UL us - Recognized (OL)
Total output inertia moment	1.07 kgcm ²
Brake holding torque	2 Nm
Motor holding torque	2.5 Nm
Brake mass moment of inertia	0.07 kgcm ²
Rotor mass moment of inertia	1 kgcm ²
Permissible axial shaft load	65 N
Permissible radial shaft load	200 N
Product weight	2500 g
Electrical connection technology	Plug
Note on materials	RoHS-compliant
Conforms to standard	IEC 60034