

PLEASE CHECK WWW.MOLEX.COM FOR LATEST PART INFORMATION

Part Number: [0876062002](#)
Status: **Active**
Overview: [extreme powerplus ssi](#)
Description: 6.35mm (.250") Pitch Power, 2.54mm (.100") Pitch Signal, EXTreme PowerPlus™ (SSI) DPS Header, Through Hole, Right Angle, Screw Mount, Power Alpha 1, Signal 24, Power Beta 1, B4 Recessed Signal Pin, Long Blade, Lead-free

Documents:

3D Model	Product Specification PS-87606-002 (PDF)
Drawing (PDF)	RoHS Certificate of Compliance (PDF)

General

Product Family	PCB Headers
Series	87606
Application	Board-to-Board
Comments	Recessed Signal Pin : B4 Long Blade
Overview	extreme powerplus ssi
Product Name	EXTreme PowerPlus™

Physical

Breakaway	No
Circuits (Loaded)	26
Circuits Detail	Power Alpha 1, Signal 24, Power Beta 1
Color - Resin	Black
Durability (mating cycles max)	100
First Mate / Last Break	Yes
Glow-Wire Compliant	No
Guide to Mating Part	Yes
Keying to Mating Part	Yes
Lock to Mating Part	Yes
Material - Metal	Copper Alloy
Material - Plating Mating	Gold
Material - Plating Termination	Tin
Material - Resin	High Temperature Thermoplastic
Number of Rows	4
Orientation	Right Angle
PC Tail Length (in)	0.135 In
PC Tail Length (mm)	3.43 mm
PCB Locator	Yes
PCB Retention	Yes
PCB Thickness Recommended (in)	0.062 In
PCB Thickness Recommended (mm)	1.57 mm
Packaging Type	Tray
Pitch - Mating Interface (in)	0.100 In
Pitch - Mating Interface (mm)	2.54 mm
Plating min: Mating (µin)	30
Plating min: Mating (µm)	0.76
Plating min: Termination (µin)	101.6
Plating min: Termination (µm)	2.54
Polarized to Mating Part	Yes
Polarized to PCB	Yes
Shrouded	Fully
Stackable	No
Surface Mount Compatible (SMC)	No
Temperature Range - Operating	-20°C to +105°C
Termination Interface: Style	Through Hole

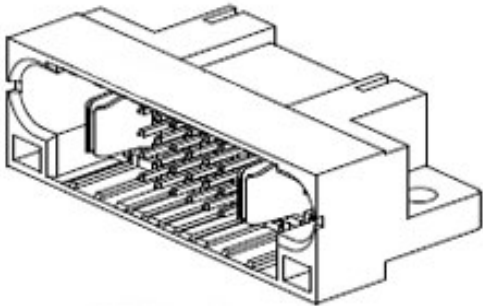


image - Reference only

Series

EU RoHS
ELV and RoHS
Compliant
REACH SVHC
Not Reviewed
Halogen-Free
Status
Halogen-Free

China RoHS



Need more information on product environmental compliance?

Email productcompliance@molex.com
For a multiple part number RoHS Certificate of Compliance, [click here](#)

Please visit the [Contact Us](#) section for any non-product compliance questions.

Search Parts in this Series
[87606Series](#)

Mates With
[87607](#) PCB Receptacle with Beveled Metal Pins. [87695](#) PCB Receptacle with Press-fit PC Tails

Electrical

Current - Maximum per Contact	2.5A, 30A
Voltage - Maximum	50V DC

Solder Process Data

Duration at Max. Process Temperature (seconds)	10
Lead-free Process Capability	SMC & Wave Capable (TH only)
Max. Cycles at Max. Process Temperature	3
Process Temperature max. C	260

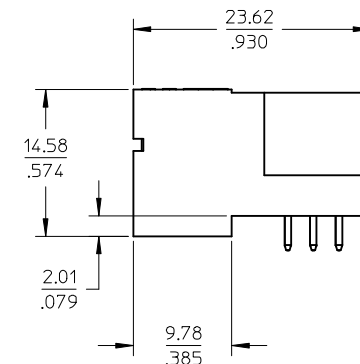
Material Info

Reference - Drawing Numbers

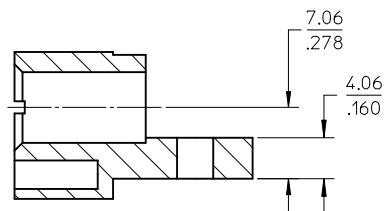
Application Specification	AS-87631-018
Product Specification	PS-87606-002
Sales Drawing	SD-87606-015

This document was generated on 05/25/2010

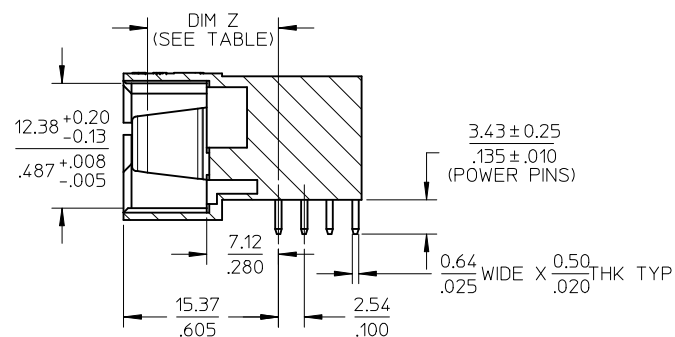
PLEASE CHECK WWW.MOLEX.COM FOR LATEST PART INFORMATION



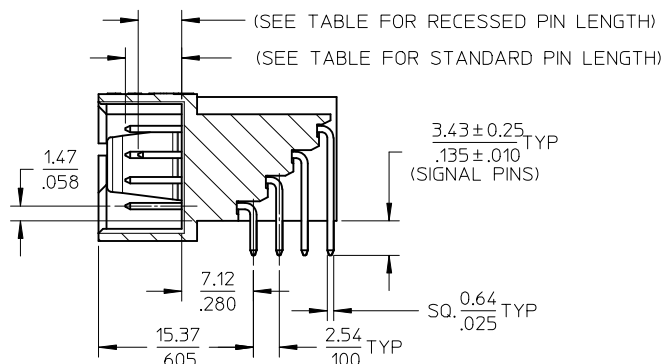
10 9 8 7 6 5 4 3 2 1



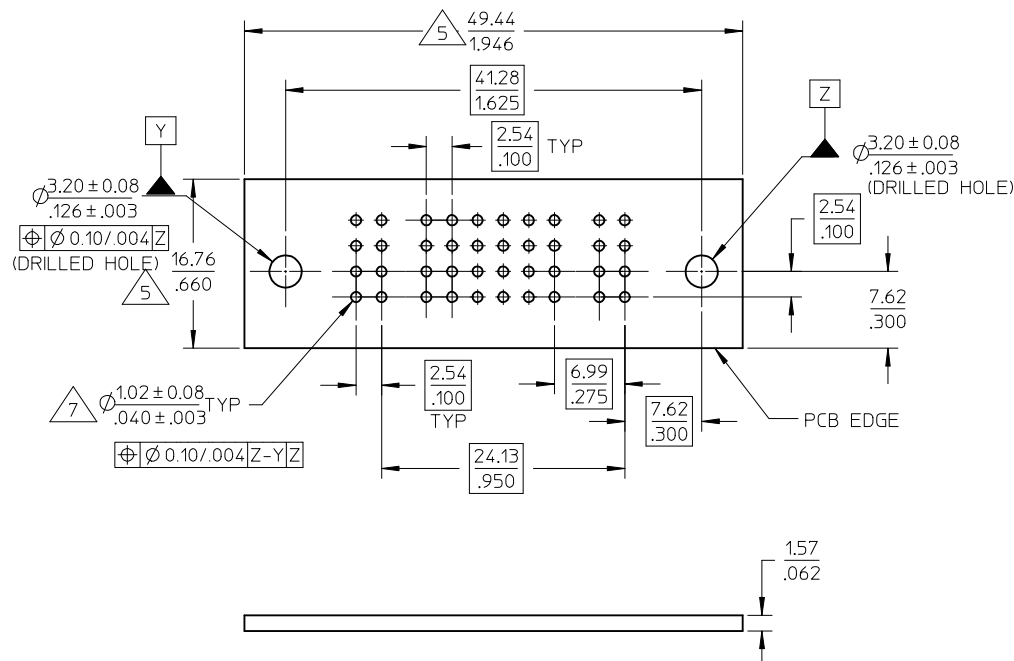
SECTION A-A

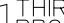


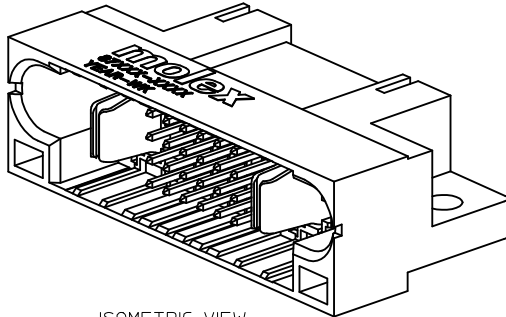
SECTION B-B
(LOCKING DETAIL NOT SHOWN)



SECTION C-C
(LOCKING DETAIL NOT SHOWN)



CORRECT PCB HOLE SIZE EC NO: S2009-0475 DRWN:SKANG CHKD:ATSEE APPR:MLONG REV D2	DESCRIPTION	QUALITY SYMBOLS ▽=0 ◇=0	GENERAL TOLERANCES (UNLESS SPECIFIED)				DIMENSION STYLE MM/IN		SCALE NTS	DESIGN UNITS METRIC	 THIRD ANGLE PROJECTION		
			mm		INCH		DRAWN BY BHLOW	DATE 2002/12/02	TITLE DPS CONNECTOR, HEADER 1P-24S-1P CONFIG R/A, T/H, SCREW MOUNT MOLEX INCORPORATED				
			4 PLACES ± --- ± ---		CHECKED BY PTL IM		DATE 2002/12/09						
			3 PLACES ± --- ± .005		APPROVED BY SKTOH		DATE 2002/12/10						
			2 PLACES ± 0.13 ± .010		1 PLACE ± 0.25 ± ---		MATERIAL NO. SEE TABLE					DOCUMENT NO. SD-87606-015	
			ANGULAR ± 3 °				DRAFT WHERE APPLICABLE MUST REMAIN WITHIN DIMENSIONS		SIZE A3			THIS DRAWING CONTAINS INFORMATION THAT IS PROPRIETARY TO MOLEX INCORPORATED AND SHOULD NOT BE USED WITHOUT WRITTEN PERMISSION	

10		9		8		7		6		5		4		3		2		1			
PART NUMBER	P-S-P CONFIGURATION			POWER BLADE OPTIONS		STANDARD SIGNAL		RECESSED SIGNAL PIN		PACKAGING											
	POWER	ALHPA	SIGNAL	POWER	BETA	TYPE	DIM	Z	PIN LENGTH											PIN LENGTH	LOCATION
87606-1001	1		24	1		SHORT CONTACT	13.32/.524		5.59/.220	4.32/.170										B4	TRAY
87606-2002	1		24	1		LONG CONTACT	14.12/.556		6.86/.270	5.59/.220										B4	TRAY
87606-2003	1		24	1		LONG CONTACT	14.12/.556		6.45/.254	4.32/.170										C1,C6	TRAY
87606-2004	1		24	1		LONG CONTACT	14.12/.556		6.86/.270	5.59/.220										A1,A6,D1,D6	TRAY
87606-2005	1		24	1		LONG CONTACT	14.12/.556		6.86/.270	5.59/.220	A2	TRAY									
																					
													ISOMETRIC VIEW								