

PLEASE CHECK WWW.MOLEX.COM FOR LATEST PART INFORMATION

Part Number: [0350211001](#)
Status: **Active**
Description: Board-In Right Angle Crimp Terminal 35021, Reel, Brass Tin (Sn)

Documents:

3D Model	Product Specification PS-35022-003 (PDF)
Drawing (PDF)	Product Specification PS-35808-001 (PDF)
Product Specification PS-35021-001 (PDF)	RoHS Certificate of Compliance (PDF)

General

Product Family	Crimp Terminals
Series	35021
Comments	Right Angle, Use with Housing 35022
Crimp Quality Equipment	Yes
Product Name	Board-In

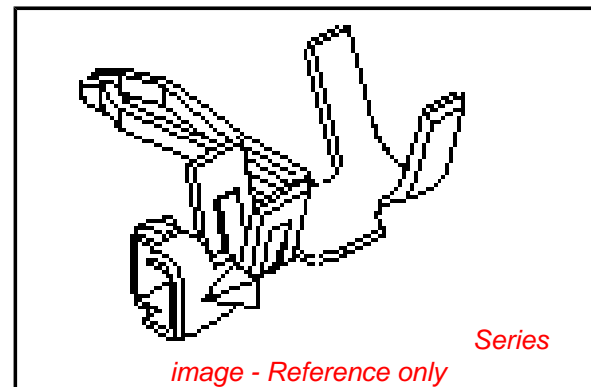
Physical

Gender	Male
Material - Metal	Brass
Material - Plating Mating	Tin
Material - Plating Termination	Tin
Packaging Type	Reel
Plating min: Mating (µin)	32.00
Plating min: Mating (µm)	0.800
Plating min: Termination (µin)	32.00
Plating min: Termination (µm)	0.80
Termination Interface: Style	Crimp or Compression
Wire Insulation Diameter	1.9 mm Max (.075" Max)
Wire Size AWG	22, 30
Wire Size mm ²	N/A

Material Info

Reference - Drawing Numbers

Product Specification	PS-35021-001, PS-35022-003, PS-35808-001, RPS-35022-001
Sales Drawing	SD-35021-001, SD-35021-1***



EU RoHS

ELV and RoHS Compliant

REACH SVHC

Contains SVHC: No

Halogen-Free

Status

Halogen-Free

Need more information on product environmental compliance?

Email productcompliance@molex.com
 For a multiple part number RoHS Certificate of Compliance, [click here](#)

Please visit the [Contact Us](#) section for any non-product compliance questions.

China RoHS



Search Parts in this Series

[35021Series](#)

Use With

[35023 Housing](#)

Application Tooling | FAQ

Tooling specifications and manuals are found by selecting the products below. Crimp Height Specifications are then contained in the Application Tooling Specification document.

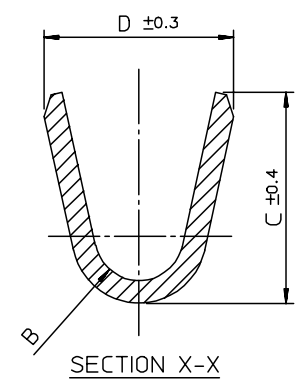
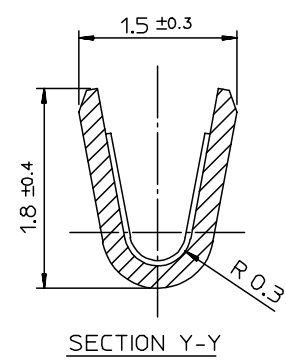
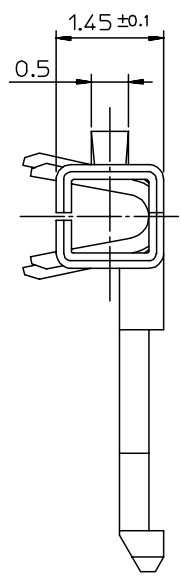
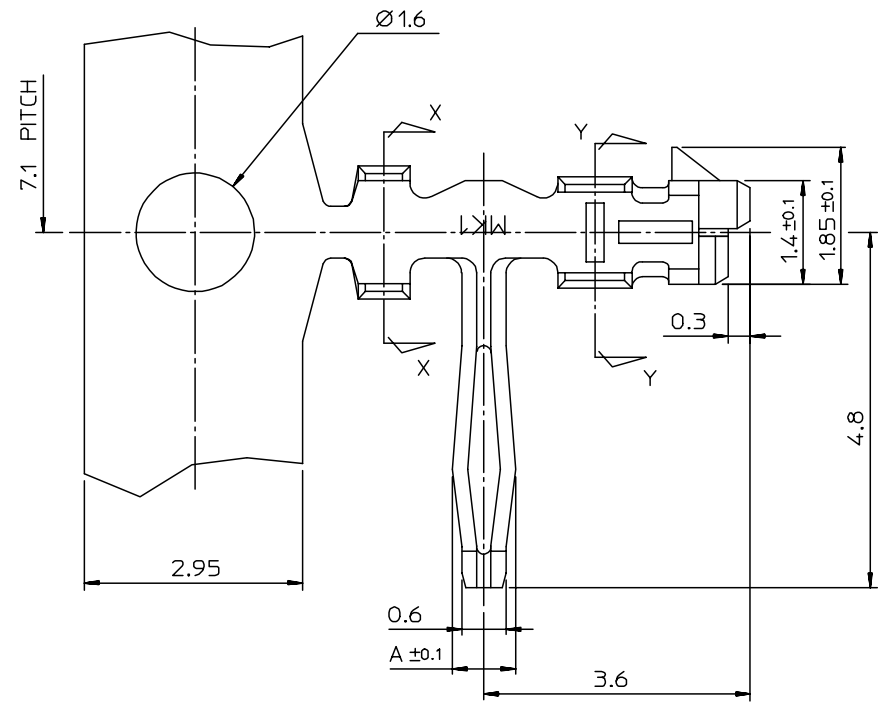
Global

Description	Product #
HAND CRIMP TOOL	0638116900
T2 Terminator Die	0638532000
T2 Terminator	0638532100
Tooling Die	
FineAdjust™	0638632000
Applicator	
FineAdjust™	0638632100
Applicator	

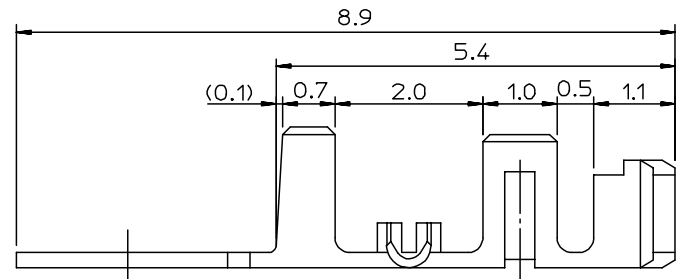
This document was generated on 04/15/2010

PLEASE CHECK WWW.MOLEX.COM FOR LATEST PART INFORMATION

DWG. NO. SD-35021-001
 SIMILAR ITEM
 PROJECT NO.
 DO NOT SCALE DRAWING DIMENSION IN METRIC



- NOTE
- MATERIAL
 - BRASS (CDA 260)
 - PHOSPHOR BRONZE (CDA 510)
 - PLATING
 - PRE PLATED - TIN OVER COPPER
 - POST PLATED - TIN/LEAD OVER COPPER
 - USED HOUSING : 35022-00**/35023-00**/68418-***00

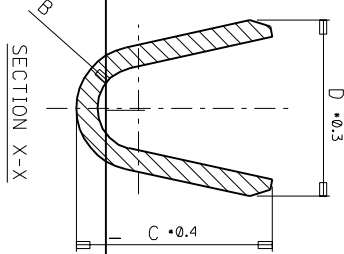
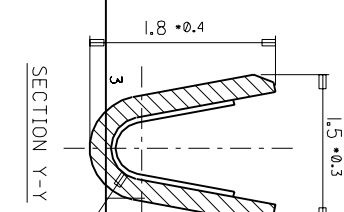
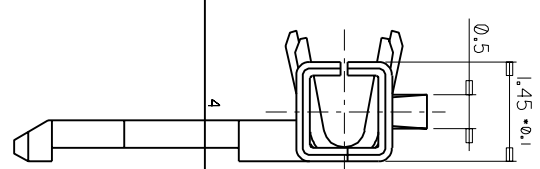
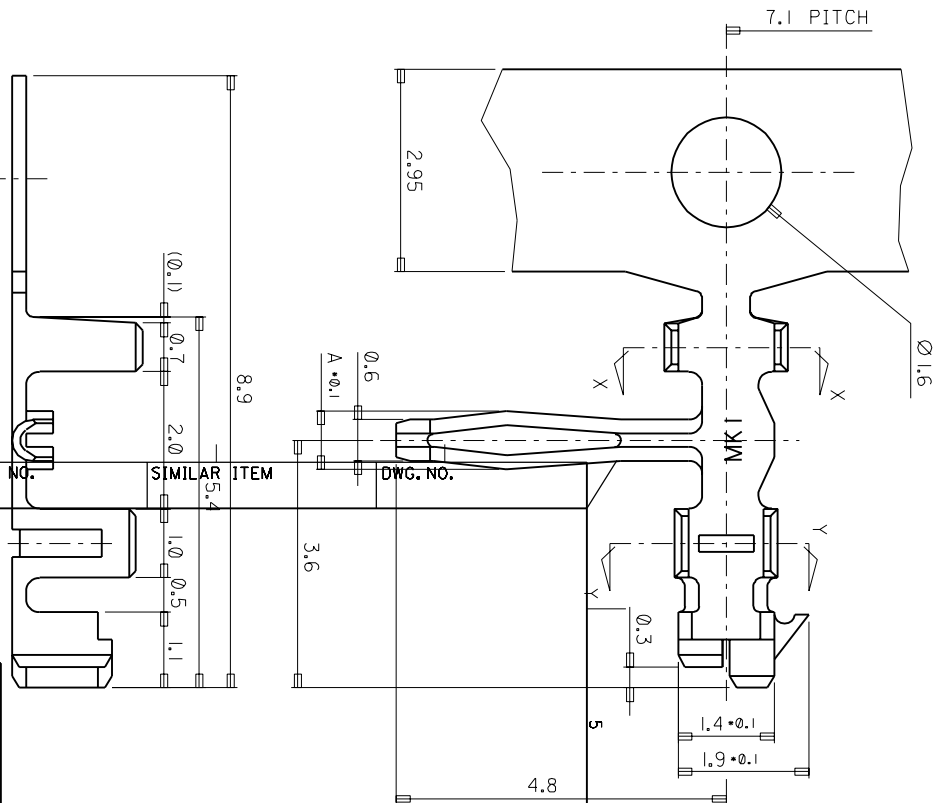


POST-PLATED	PHOS. BRON.	AWG #24-#30	1.8	1.9	R0.4	0.85	350211310	35021-1310
PRE-PLATED	PHOS. BRON.	(INS. DIA: Ø 1.5 MAX.)	2.5	2.5	R0.7	1.05	350211301	35021-1301
	BRASS						350211201	35021-1201
PRE-PLATED	PHOS. BRON.	AWG #22-#28 (INS. DIA: Ø 1.9 MAX.)	2.5	2.5	R0.7	1.05	350211101	35021-1101
	BRASS						350211001	35021-1001
POST-PLATED	PHOS. BRON.						350211110	35021-1110
PLATING	MATERIAL	WIRE RANGE	D	C	B	A	MAT'L NO.	ENG NO.

REVISED EC NO: KOR2007-0027 DRWN: JHLEE 06/09/13 CHK: KSKIM 06/09/13 APPR: YSOOKIM 06/09/13	QUALITY SYMBOLS MAJOR CRITICAL	GENERAL TOLERANCES: (UNLESS SPECIFIED)		SCALE 15-1	DESIGN UNITS <input checked="" type="checkbox"/> mm <input type="checkbox"/> INCH	THIRD ANGLE PROJECTION	DIMENSIONS: <input type="checkbox"/> mm <input type="checkbox"/> INCH <input checked="" type="checkbox"/> mm ONLY		SHT	REV
		4 PLACES ±0. ±. 3 PLACES ±0. ±. 2 PLACES ±0. ±. 1 PLACE ±0.3 ±.	DRAWN BY & DATE HSSHIN	TITLE: R/A B-IN TERMINAL						
DESCRIPTION REV	DRAFT WHERE APPLICABLE MUST REMAIN WITHIN DIMENSIONS	ANGULAR: ± 1 °		CHECKED BY & DATE JKOH	MOLEX INCORPORATED		MATERIAL NO. SEE TABLE		DRAWING NO. SD-35021-001	SHEET NO. 10F1
		CAD FILENAME SD35021.DGN		APPROVED BY & DATE CWLEE		THIS DRAWING CONTAINS INFORMATION THAT IS PROPRIETARY TO MOLEX INCORPORATED AND SHOULD NOT BE USED WITHOUT WRITTEN PERMISSION.		SIZE B		MX-A3

PROJECT NO. SIMILAR ITEM DWG. NO.
35021-1*** SD 35021-1***

DO NOT SCALE DRAWING
DIMENSION IN METRIC



- NOTE
1. MATERIAL
1) BRASS (CDA 260)
2) PHOSPHOR BRONZE (CDA 510)
 2. PLATING
1) PRE PLATED - TIN OVER COPPER
2) POST PLATED - TIN/LEAD OVER COPPER
 3. USED HOUSING : 35022-00** / 35023-00**

POST-PLATED	PHOS. BRON.	AWG #24-#30	1.8	1.9	R0.4	0.85	35021-1310
PRE-PLATED	PHOS. BRON.	(INS. DIA: Ø 1.5 MAX.)	1.8	1.9	R0.4	0.85	35021-1301
PRE-PLATED	BRASS	(INS. DIA: Ø 1.5 MAX.)	2.5	2.5	R0.7	1.05	35021-1201
POST-PLATED	PHOS. BRON.	AWG #22-#30 (INS. DIA: Ø 1.9 MAX.)	2.5	2.5	R0.7	1.05	35021-1101
PLATING	MATERIAL	WIRE RANGE	D	C	B	A	35021-1110

REVISIONS

REV	DESCRIPTION
1	REVISION

EC NO. KOR1998-0091
DRWN: HSSHIN(980609)
CHK: JKOH
APPR: CWLEE

QUALITY SYMBOLS	GENERAL TOLERANCES: (UNLESS SPECIFIED)	SCALE	DESIGN UNITS	THIRD ANGLE PROJECTION	TITLE
MAJOR	±0.1	15-1	MM	<input checked="" type="checkbox"/>	R/A B-IN TERMINAL
MINOR	±0.05		MM	<input type="checkbox"/>	
CRITICAL	±0.02		MM	<input type="checkbox"/>	

DRAWN BY & DATE: HSSHIN
CHECKED BY & DATE: JKOH
APPROVED BY & DATE: CWLEE

CAD FILENAME: SD35021.DGN
MATERIAL NO.: 350-21-1***
DRAWING NO.: SD 35021-1***
SHEET NO.: 1 OF 1
SIZE: A

MOLEX INCORPORATED
KOREA

8 7 6 5 4 3 2 1

MX-A8