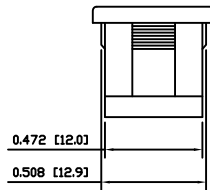
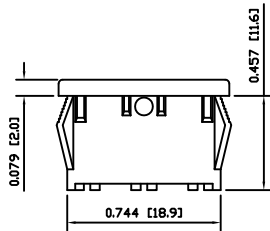
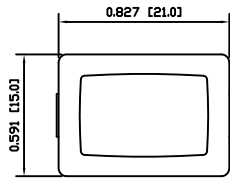


**SPECIFICATIONS**

FUNCTION:  
Switch Blank

APPROVALS:  
**RoHS**  
COMPLIANT



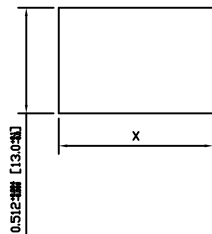
**COLORS AND MARKINGS**

BODY:  
Black  
  
ACTUATOR:  
Black  
  
MARKINGS:  
None  
  
MARKING COLOR:  
None

**MATERIALS**

BODY:  
Polyamide 6/6 (PA66), UL94 V-2

**SUGGESTED PANEL CUTOUT**



PANEL THICKNESS		X
0.030~0.049	[0.75~1.25]	0.756 [19.2]
0.049~0.079	[1.25~2.00]	0.764 [19.4]
0.079~0.118	[2.00~3.00]	0.772 [19.6]

ACTUATOR	A	09/05/04	CAB
BODY	A	09/05/04	CAB
COLORS	A	09/05/04	CAB
MATERIALS	A	09/05/04	CAB
SPECIFICATIONS	A	09/05/04	CAB
REFERENCE	REV.	DATE	BY

THE INFORMATION CONTAINED IN THIS DOCUMENT IS PROPRIETARY TO E-SWITCH-LAMB INDUSTRIES AND IS NOT TO BE COPIED OR TRANSFERRED

A	INITIAL RELEASE	18872	10/02/11	CAB
REV.	DESCRIPTION	PCR	DATE	DRAWN BY

DIMENSIONS	
INCHES [MILLIMETERS]	
GENERAL TOLERANCES	
±0.008 [±0.2] / ±1'	
SCALE	PROJECTION
DRAWING NOT TO SCALE	1st Angle

RA10001100		
ITEM NUMBER	DATE	REVISION
38-RA10001100	FEBRUARY 11, 2010	A