

Marshalling panel - FTRV 4 BU/WH

3270173

<https://www.phoenixcontact.com/us/products/3270173>

Please be informed that the data shown in this PDF document is generated from our Online Catalog. Please find the complete data in the user documentation. Our General Terms of Use for Downloads are valid.



Marshalling panel, without actuation lever, nom. voltage: 250 V, nominal current: 10 A, connection method: Push-in connection, 1st, 2nd, 3rd and 4th level, Rated cross section: 1.5 mm², cross section: 0.14 mm² - 2.5 mm², mounting: NS 35/7,5, NS 35/15, color: blue, color of connection elements: white

Your advantages

- Tool-free wiring in a confined space thanks to compact size
- High contact quality thanks to push-in technology as a replacement for Wire-Wrap®, TERMI-POINT®, etc.
- Blue version for using in intrinsically safe circuits in potentially explosive areas (type of protection Ex i)
- Individual color assignment of cable and terminal point to ensure error-free, safe operation
- The 2.3 mm test connection enables testing between the conductors with test pins commonly used in the industry

Marshalling panel - FTRV 4 BU/WH



3270173

<https://www.phoenixcontact.com/us/products/3270173>

Commercial Data

Item number	3270173
Packing unit	10 pc
Minimum order quantity	1 pc
Note	Made to Order (non-returnable)
Product Key	BE6211
Catalog Page	Page 46 (C-1-2019)
GTIN	4055626044248
Weight per Piece (including packing)	17.4 g
Weight per Piece (excluding packing)	17.4 g
Customs tariff number	85369010
Country of origin	PL

Marshalling panel - FTRV 4 BU/WH



3270173

<https://www.phoenixcontact.com/us/products/3270173>

Technical Data

Product properties

Product type	Marshalling terminal
Number of positions	2
Number of connections	16
Number of rows	4
Potentials	4

Insulation characteristics

Overvoltage category	III
----------------------	-----

Electrical properties

Rated surge voltage	6 kV
Maximum power dissipation for nominal condition	0.56 W

Connection data

Number of connections per level	4
Nominal cross section	1.5 mm ²

1st, 2nd, 3rd and 4th level

Stripping length	8 mm ... 10 mm
Conductor cross section solid	0.14 mm ² ... 2.5 mm ²
Cross section AWG	26 ... 14
Conductor cross section flexible	0.14 mm ² ... 1.5 mm ²
Conductor cross section, flexible [AWG]	26 ... 14
Flexible conductor cross section flexible (ferrule, w/o plastic sleeve)	0.14 mm ² ... 1.5 mm ²
Flexible conductor cross section (ferrule with plastic sleeve)	0.14 mm ² ... 1.5 mm ²
Nominal current	10 A
Maximum load current	10 A (with 1.5 mm ² conductor cross section)
Nominal voltage	250 V
Nominal cross section	1.5 mm ²

1st, 2nd, 3rd and 4th level Connection cross sections directly pluggable

Conductor cross section solid	0.34 mm ² ... 2.5 mm ²
Conductor cross section, solid [AWG]	20 ... 14
Flexible conductor cross section flexible (ferrule, w/o plastic sleeve)	0.34 mm ² ... 1.5 mm ²
Flexible conductor cross section (ferrule with plastic sleeve)	0.34 mm ² ... 1.5 mm ²

Dimensions

Width	8.3 mm
Height NS 35/15	63 mm
Height NS 35/7,5	55.5 mm

Marshalling panel - FTRV 4 BU/WH



3270173

<https://www.phoenixcontact.com/us/products/3270173>

Length	64 mm
--------	-------

Material specifications

Color	blue
Color of connection elements	white
Flammability rating according to UL 94	V0
Insulating material group	I
Insulating material	PA
Static insulating material application in cold	-60 °C
Temperature index of insulation material (DIN EN 60216-1 (VDE 0304-21))	130 °C
Relative insulation material temperature index (Elec., UL 746 B)	130 °C
Fire protection for rail vehicles (DIN EN 45545-2) R22	HL 1 - HL 3
Fire protection for rail vehicles (DIN EN 45545-2) R23	HL 1 - HL 3
Fire protection for rail vehicles (DIN EN 45545-2) R24	HL 1 - HL 3
Fire protection for rail vehicles (DIN EN 45545-2) R26	HL 1 - HL 3
Calorimetric heat release NFPA 130 (ASTM E 1354)	28 MJ/kg
Surface flammability NFPA 130 (ASTM E 162)	passed
Specific optical density of smoke NFPA 130 (ASTM E 662)	passed
Smoke gas toxicity NFPA 130 (SMP 800C)	passed

Mechanical properties

Mechanical data

Open side panel	Yes
-----------------	-----

Environmental and real-life conditions

Ambient conditions

Ambient temperature (operation)	-60 °C ... 105 °C (max. short-term operating temperature RTI Elec.)
Ambient temperature (storage/transport)	-25 °C ... 60 °C (for a short time, not exceeding 24 h, -60 °C to +70 °C)
Ambient temperature (assembly)	-5 °C ... 70 °C
Ambient temperature (actuation)	-5 °C ... 70 °C
Permissible humidity (storage/transport)	30 % ... 70 %

Standards and regulations

Connection in acc. with standard	IEC 60947-7-1
----------------------------------	---------------

Mounting

Mounting type	NS 35/7,5
	NS 35/15

Marshalling panel - FTRV 4 BU/WH

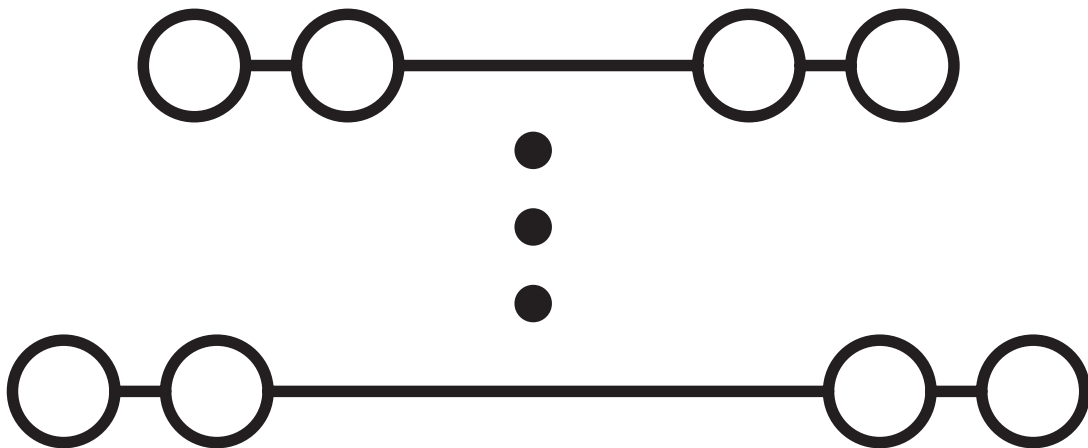


3270173

<https://www.phoenixcontact.com/us/products/3270173>

Drawings

Circuit diagram



Marshalling panel - FTRV 4 BU/WH



3270173

<https://www.phoenixcontact.com/us/products/3270173>

Approvals

DNV

Approval ID: TAE000016Y



CSA

Approval ID: 13631

	Nominal Voltage U_N	Nominal Current I_N	Cross Section AWG	Cross Section mm^2
Use group B	300 V	10 A	26 - 14	-
Use group D	300 V	10 A	26 - 14	-



IECEE CB Scheme

Approval ID: NL-58817

	Nominal Voltage U_N	Nominal Current I_N	Cross Section AWG	Cross Section mm^2
	250 V	10 A	-	-



EAC

Approval ID: RU C-DE.BL08.B.00682



cULus Recognized

Approval ID: E60425

	Nominal Voltage U_N	Nominal Current I_N	Cross Section AWG	Cross Section mm^2
Use group D	300 V	10 A	26 - 14	-



KEMA-KEUR

Approval ID: 71-102890

	Nominal Voltage U_N	Nominal Current I_N	Cross Section AWG	Cross Section mm^2
Only flexible conductors	250 V	10 A	-	0.14 - 1.5
Only rigid conductors	250 V	10 A	-	0.14 - 2.5

Marshalling panel - FTRV 4 BU/WH



3270173

<https://www.phoenixcontact.com/us/products/3270173>

Classifications

ECLASS

ECLASS-9.0	27141120
ECLASS-10.0.1	27141120
ECLASS-11.0	27141120

ETIM

ETIM 8.0	EC000897
----------	----------

UNSPSC

UNSPSC 21.0	39121400
-------------	----------

Marshalling panel - FTRV 4 BU/WH



3270173

<https://www.phoenixcontact.com/us/products/3270173>

Environmental Product Compliance

China RoHS	Environmentally friendly use period: unlimited = EFUP-e
	No hazardous substances above threshold values

Marshalling panel - FTRV 4 BU/WH

3270173

<https://www.phoenixcontact.com/us/products/3270173>

Accessories

Screwdriver

Screwdriver - SZF 0-0,4X2,5 - 1204504

<https://www.phoenixcontact.com/us/products/1204504>



Actuation tool, for ST terminal blocks, also suitable for use as a bladed screwdriver, size: 0.4 x 2.5 x 75 mm, 2-component grip, with non-slip grip

Reducing plug

Reducing plug - RPS - 0201647

<https://www.phoenixcontact.com/us/products/0201647>



Reducing plug, color: gray

Marshalling panel - FTRV 4 BU/WH

3270173

<https://www.phoenixcontact.com/us/products/3270173>

Spacer plate

Spacer plate - DP-PTRV 4 - 3270163

<https://www.phoenixcontact.com/us/products/3270163>

Spacer plate, length: 63.6 mm, width: 8.3 mm, height: 54 mm, color: gray



Mounting material

Mounting material - PT-IL - 3208090

<https://www.phoenixcontact.com/us/products/3208090>

Operating decal for the push-in Technology



Marshalling panel - FTRV 4 BU/WH

3270173

<https://www.phoenixcontact.com/us/products/3270173>

DIN rail perforated

DIN rail perforated - NS 35/ 7,5 PERF 2000MM - 0801733

<https://www.phoenixcontact.com/us/products/0801733>



DIN rail perforated, acc. to EN 60715, material: Steel, galvanized, passivated with a thick layer, Standard profile, color: silver, Pack of 25 (50 m)

DIN rail perforated

DIN rail perforated - NS 35/ 7,5 WH PERF 2000MM - 1204119

<https://www.phoenixcontact.com/us/products/1204119>



DIN rail perforated, acc. to EN 60715, material: Steel, Galvanized, white passivated, Standard profile, color: silver, Pack of 25 (50 m)

Marshalling panel - FTRV 4 BU/WH

3270173

<https://www.phoenixcontact.com/us/products/3270173>



DIN rail perforated

DIN rail perforated - NS 35/ 7,5 ZN PERF 2000MM - 1206421

<https://www.phoenixcontact.com/us/products/1206421>

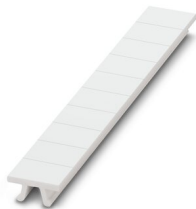


DIN rail perforated, acc. to EN 60715, material: Steel, galvanized, Standard profile, color: silver, Pack of 25 (50 m)

Zack marker strip

Zack marker strip - ZB 8,3:UNBEDRUCKT - 0803444

<https://www.phoenixcontact.com/us/products/0803444>



Zack marker strip, Strip, white, unlabeled, can be labeled with: PLOTMARK, CMS-P1-PLOTTER, mounting type: snap in, for terminal block width: 8.3 mm, lettering field size: 10.5 x 8.3 mm

Marshalling panel - FTRV 4 BU/WH



3270173

<https://www.phoenixcontact.com/us/products/3270173>

Zack marker strip

Zack marker strip - ZB 8,3,LGS:FORTL.ZAHLEN - 0803480

<https://www.phoenixcontact.com/us/products/0803480>



Zack marker strip, Strip, white, labeled, can be labeled with: CMS-P1-PLOTTER, mounting type: snap into tall marker groove, for terminal block width: 8.3 mm, lettering field size: 10.5 x 8.3 mm

Zack marker strip

Zack marker strip - ZB 8,3,QR:FORTL.ZAHLEN - 0803479

<https://www.phoenixcontact.com/us/products/0803479>



Zack marker strip, Strip, white, labeled, can be labeled with: CMS-P1-PLOTTER, mounting type: snap into tall marker groove, for terminal block width: 8.3 mm, lettering field size: 10.5 x 8.3 mm

Marshalling panel - FTRV 4 BU/WH



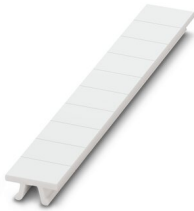
3270173

<https://www.phoenixcontact.com/us/products/3270173>

Zack marker strip

Zack marker strip - ZB 8,3 CUS - 8191573

<https://www.phoenixcontact.com/us/products/8191573>



Zack marker strip, Strip, white, labeled according to customer specifications, mounting type: snap into tall marker groove, for terminal block width: 8.3 mm, lettering field size: 10.5 x 8.3 mm

Actuation tool

Actuation tool - ST-BW 0 - 1200135

<https://www.phoenixcontact.com/us/products/1200135>



Actuation tool, for all 1.5 mm² spring cages from PT 1,5/S and FT 1,5/S

Marshalling panel - FTRV 4 BU/WH

3270173

<https://www.phoenixcontact.com/us/products/3270173>

End clamp

End clamp - CLIPFIX 35 - 3022218

<https://www.phoenixcontact.com/us/products/3022218>



Quick mounting end clamp for NS 35/7,5 DIN rail or NS 35/15 DIN rail, with marking option, width: 9.5 mm, color: gray

End clamp

End clamp - CLIPFIX 35-5 - 3022276

<https://www.phoenixcontact.com/us/products/3022276>



Quick mounting end clamp for NS 35/7,5 DIN rail or NS 35/15 DIN rail, with marking option, with parking option for FBS...5, FBS...6, KSS 5, KSS 6, width: 5.15 mm, color: gray

Marshalling panel - FTRV 4 BU/WH

3270173

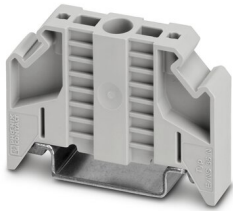
<https://www.phoenixcontact.com/us/products/3270173>

End clamp

End clamp - E/NS 35 N - 0800886

<https://www.phoenixcontact.com/us/products/0800886>

End clamp, width: 9.5 mm, color: gray



End clamp

End clamp - E/UK - 1201442

<https://www.phoenixcontact.com/us/products/1201442>

End clamp, material: PA, color: gray, Mounting on a DIN rail NS 32 or NS 35



Marshalling panel - FTRV 4 BU/WH



3270173

<https://www.phoenixcontact.com/us/products/3270173>

End clamp

End clamp - E/UK 1 - 1201413

<https://www.phoenixcontact.com/us/products/1201413>



End clamps, for supporting the ends of double-level and three-level terminal blocks, width: 10 mm, color: gray

End cover

End cover - D-PTRV 4 WH - 3270151

<https://www.phoenixcontact.com/us/products/3270151>



End cover, length: 63.6 mm, width: 3.8 mm, height: 48.9 mm, color: white

Marshalling panel - FTRV 4 BU/WH

3270173

<https://www.phoenixcontact.com/us/products/3270173>

End cover

End cover - D-PTRV 4 WH 1-4 - 3270152

<https://www.phoenixcontact.com/us/products/3270152>



End cover, length: 63.6 mm, width: 2.2 mm, height: 48.9 mm, color: white

End cover

End cover - D-PTRV 4 WH 1-4 LGS - 3270234

<https://www.phoenixcontact.com/us/products/3270234>



End cover, length: 63.6 mm, width: 2.2 mm, height: 48.9 mm, color: white

Marshalling panel - FTRV 4 BU/WH

3270173

<https://www.phoenixcontact.com/us/products/3270173>

End cover

End cover - D-PTRV 4 WH 4-1 - 3270236

<https://www.phoenixcontact.com/us/products/3270236>



End cover, length: 63.6 mm, width: 2.2 mm, height: 48.9 mm, color: white

End cover

End cover - D-PTRV 4 WH 4-1 LGS - 3270238

<https://www.phoenixcontact.com/us/products/3270238>



End cover, length: 63.6 mm, width: 2.2 mm, height: 48.9 mm, color: white

Marshalling panel - FTRV 4 BU/WH

3270173

<https://www.phoenixcontact.com/us/products/3270173>

End cover

End cover - D-PTRV 4 WH A-D - 3270153

<https://www.phoenixcontact.com/us/products/3270153>



End cover, length: 63.6 mm, width: 2.2 mm, height: 48.9 mm, color: white

End cover

End cover - D-PTRV 4 WH A-D LGS - 3270235

<https://www.phoenixcontact.com/us/products/3270235>



End cover, length: 63.6 mm, width: 2.2 mm, height: 48.9 mm, color: white

Marshalling panel - FTRV 4 BU/WH

3270173

<https://www.phoenixcontact.com/us/products/3270173>

End cover

End cover - D-PTRV 4 WH D-A - 3270237

<https://www.phoenixcontact.com/us/products/3270237>



End cover, length: 63.6 mm, width: 2.2 mm, height: 48.9 mm, color: white

End cover

End cover - D-PTRV 4 WH D-A LGS - 3270239

<https://www.phoenixcontact.com/us/products/3270239>



End cover, length: 63.6 mm, width: 2.2 mm, height: 48.9 mm, color: white

Marshalling panel - FTRV 4 BU/WH

3270173

<https://www.phoenixcontact.com/us/products/3270173>



Insulating sleeve

Insulating sleeve - MPS-IH WH - 0201663

<https://www.phoenixcontact.com/us/products/0201663>

Insulating sleeve, color: white



Insulating sleeve

Insulating sleeve - MPS-IH RD - 0201676

<https://www.phoenixcontact.com/us/products/0201676>

Insulating sleeve, color: red



Marshalling panel - FTRV 4 BU/WH

3270173

<https://www.phoenixcontact.com/us/products/3270173>

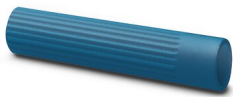


Insulating sleeve

Insulating sleeve - MPS-IH BU - 0201689

<https://www.phoenixcontact.com/us/products/0201689>

Insulating sleeve, color: blue



Insulating sleeve

Insulating sleeve - MPS-IH YE - 0201692

<https://www.phoenixcontact.com/us/products/0201692>

Insulating sleeve, color: yellow



Marshalling panel - FTRV 4 BU/WH

3270173

<https://www.phoenixcontact.com/us/products/3270173>



Insulating sleeve

Insulating sleeve - MPS-IH GN - 0201702

<https://www.phoenixcontact.com/us/products/0201702>

Insulating sleeve, color: green



Insulating sleeve

Insulating sleeve - MPS-IH GY - 0201728

<https://www.phoenixcontact.com/us/products/0201728>

Insulating sleeve, color: gray



Marshalling panel - FTRV 4 BU/WH

3270173

<https://www.phoenixcontact.com/us/products/3270173>

Insulating sleeve

Insulating sleeve - MPS-IH BK - 0201731

<https://www.phoenixcontact.com/us/products/0201731>

Insulating sleeve, color: black



End cap

End cap - NS 35/ 7,5 CAP - 1206560

<https://www.phoenixcontact.com/us/products/1206560>

DIN rail end piece, for DIN rail NS 35/7.5



Marshalling panel - FTRV 4 BU/WH



3270173

<https://www.phoenixcontact.com/us/products/3270173>

DIN rail, unperforated

DIN rail, unperforated - NS 35/ 7,5 UNPERF 2000MM - 0801681

<https://www.phoenixcontact.com/us/products/0801681>



DIN rail, unperforated, acc. to EN 60715, material: Steel, galvanized, passivated with a thick layer, Standard profile, color: silver, Pack of 25 (50 m)

DIN rail, unperforated

DIN rail, unperforated - NS 35/ 7,5 WH UNPERF 2000MM-VPE 10 - 1204122

<https://www.phoenixcontact.com/us/products/1204122>



DIN rail, unperforated, acc. to EN 60715, material: Steel, Galvanized, white passivated, Standard profile, color: silver, Pack of 10 (20 m)

Marshalling panel - FTRV 4 BU/WH



3270173

<https://www.phoenixcontact.com/us/products/3270173>

DIN rail, unperforated

DIN rail, unperforated - NS 35/ 7,5 AL UNPERF 2000MM - 0801704

<https://www.phoenixcontact.com/us/products/0801704>



DIN rail, unperforated, acc. to EN 60715, material: Aluminum, uncoated, Standard profile, color: silver, Pack of 25 (50 m)

DIN rail, unperforated

DIN rail, unperforated - NS 35/ 7,5 ZN UNPERF 2000MM - 1206434

<https://www.phoenixcontact.com/us/products/1206434>



DIN rail, unperforated, acc. to EN 60715, material: Steel, galvanized, Standard profile, color: silver, Pack of 25 (50 m)

Marshalling panel - FTRV 4 BU/WH

3270173

<https://www.phoenixcontact.com/us/products/3270173>



DIN rail, unperforated

DIN rail, unperforated - NS 35/ 7,5 CU UNPERF 2000MM-VPE 10 - 0801762

<https://www.phoenixcontact.com/us/products/0801762>



DIN rail, unperforated, acc. to EN 60715, material: Copper, uncoated, Standard profile, color: copper-colored, Pack of 10 (20 m)

Test plugs

Test plugs - MPS-MT - 0201744

<https://www.phoenixcontact.com/us/products/0201744>



Test plugs, with solder connection up to 1 mm² conductor cross section, color: gray

Marshalling panel - FTRV 4 BU/WH

3270173

<https://www.phoenixcontact.com/us/products/3270173>

Marker for terminal blocks

Marker for terminal blocks - TM-PTRV 4,QR:1-4 - 0803464

<https://www.phoenixcontact.com/us/products/0803464>



Marker for terminal blocks, white, labeled, mounting type: snapped, for terminal block width: 4 mm, lettering field size: 2.4 x 9.2 mm

Marker for terminal blocks

Marker for terminal blocks - TM-PTRV 4,QR:4-1 - 0803465

<https://www.phoenixcontact.com/us/products/0803465>



Marker for terminal blocks, white, labeled, mounting type: snapped, for terminal block width: 4 mm, lettering field size: 2.4 x 9.2 mm

Marshalling panel - FTRV 4 BU/WH

3270173

<https://www.phoenixcontact.com/us/products/3270173>

Marker for terminal blocks

Marker for terminal blocks - TM-PTRV 4,QR:A-D - 0803466

<https://www.phoenixcontact.com/us/products/0803466>



Marker for terminal blocks, white, labeled, mounting type: snapped, for terminal block width: 4 mm, lettering field size: 2.4 x 9.2 mm

Marker for terminal blocks

Marker for terminal blocks - TM-PTRV 4,QR:D-A - 0803467

<https://www.phoenixcontact.com/us/products/0803467>



Marker for terminal blocks, white, labeled, mounting type: snapped, for terminal block width: 4 mm, lettering field size: 2.4 x 9.2 mm

Marshalling panel - FTRV 4 BU/WH



3270173

<https://www.phoenixcontact.com/us/products/3270173>

Retaining bracket

Retaining bracket - CDC-PTRV - 3270167

<https://www.phoenixcontact.com/us/products/3270167>



Retaining bracket, via four PTRV single modules, pitch: 8.3 mm, width: 35.6 mm, height: 71.5 mm, color: gray

Phoenix Contact 2022 © - all rights reserved

<https://www.phoenixcontact.com>

Phoenix Contact USA
586 Fulling Mill Road
Middletown, PA 17057, United States
(+717) 944-1300
info@phoenixcon.com