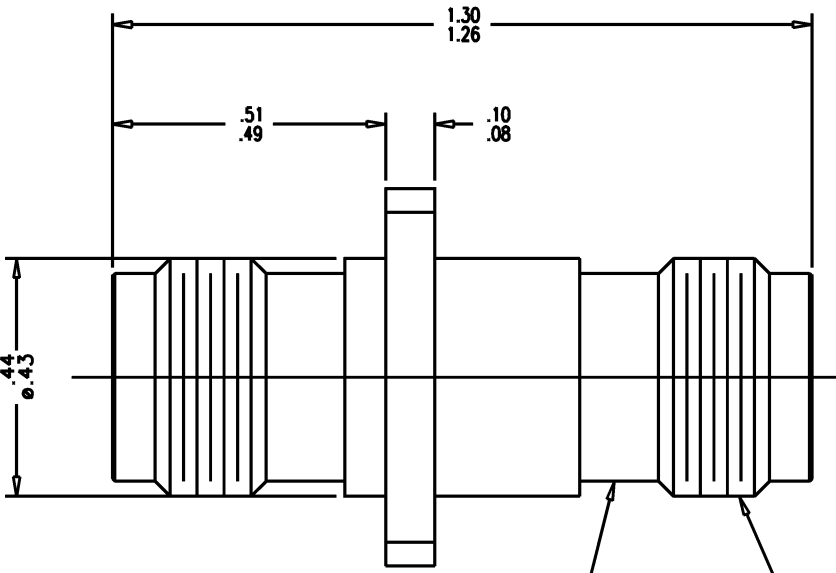
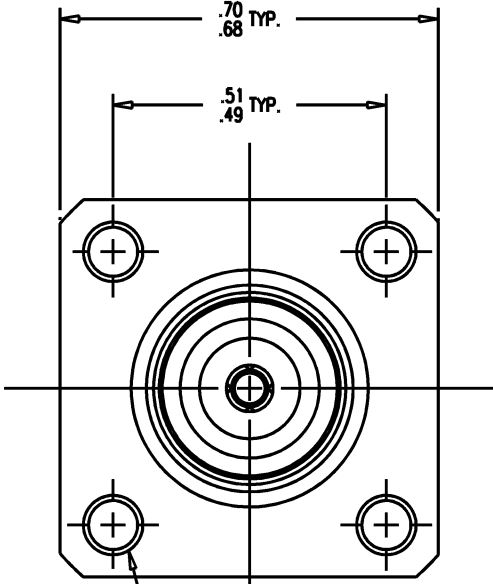


GSD



STAMP: KINGS KA-91-04
YRWK (DATE CODE)

7/16-28 UNEF-2A TH'D
(BOTH ENDS)



3-56 NC-2B TH'D
(4 PLACES)

NOTES:

1. FOR USE WITH .075 MAX. PANEL.
2. INTERFACE PER MIL-STD-348, FIG. 313-2.
3. MARK PACKAGE: KINGS KA-91-04
XXXX (DATE CODE)
4. MATERIALS:
CENTER CONTACT-BER. COP., ASTM-B-196
INSULATOR-TEFLON, ASTM-D-4894
ALL OTHER METAL PARTS-BRASS, ASTM-B16
5. FINISHES:
CENTER CONTACT-SILVER PLATE PER ASTM-B700, .0002 MIN.
ALL OTHER METAL PARTS-SILVER PLATE PER ASTM-B700, .0001 MIN.
6. ELECTRICAL CHARACTERISTICS:
NOMINAL IMPEDANCE-50 OHMS
FREQUENCY RANGE-DC TO 11 GHZ
WORKING VOLTAGE-500 VRMS

GSD

KA-91-04

REVISIONS	
ISSUE	CHANGES
12	CN 39862 C REDRAWN DCT 3/27/7
SCALE 4:1	
APPROX SURFACE AREA	
USED ON	
REF:	
ADAPTER, F-F, PANEL, TNC	
DRAWN DCT	DATE 3/27/7
DESIGN	DATE
APPR.	DATE
KINGS ELECTRONICS CO., INC. ROCK HILL, SOUTH CAROLINA 29730	
KA-91-04	