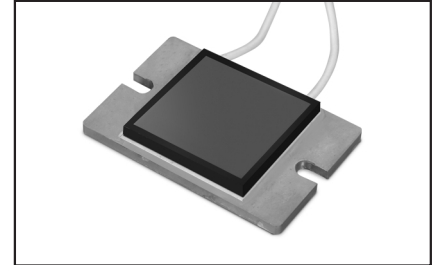


Chassis Mounting Non-Inductive Flat Type High Power Resistors

Flat type, 300W high power resistor. Attaching an air-cooled heat sink or water-cooling necessary. Rated power is 300W (one element). Custom resistance and power resistor network available. Higher density packing, vibration-proof, insulation withstand voltage and perfect heat dissipation possible. Applications include: snubber resistors, surge protection, breeder resistor, dummy load, gate resistor, dumping resistor for power supplies, pulse generators, high frequency amplifiers, theater audio equipment, etc. Note: TPL310 was replaced by TPL320.



GENERAL SPECIFICATIONS

Model	Power Rating [W]	Resistance Range[Ω]	Resistance Tolerance[%]	Limiting Voltage[V]	Weight [g]
TPL320	300W	0.1 - 51KΩ	J(±5%)	700V	About. 20g

CHARACTERISTICS

Temperature Coefficient	±100ppm/°C	-55°C, +155°C, exclude wire leads
Heat Resistance		0.23 °C/W
Operating Temperature Range		-55°C~+155°C
Dielectric Withstanding Voltage		AC2000V for 1minute between terminals and flange (Maximum leakage current 0.5mA)
Load Life	±[1%+0.01Ω]	Continuous power 1000hours
Humidity	±[1%+0.01Ω]	60°C, 90-95% RH, DC 0.1 x Power rating, 1000hours
Temperature Cycle	±[1%+0.01Ω]	-55°C, 30minutes, +125°C, 30 minutes, 5cycles
Insulation Resistance	>10,000MΩ	Between terminals and flange
Vibration	±[0.5%+0.01Ω]	IEC60068-2-6, displacement 0.75mm or acceleration 100/seconds ² 10Hz-54Hz sweep, 10cycles X-Y-Z direction
Flammability	UL94V-0	For resistor body

* Torque: Terminal 1Nm max, 0.6Nm recommend. Mounting 1.6Nm max, 1Nm recommend.

DIMENSIONS [mm]

