

NEW

LASER DIODE

Laser diode

L8958 series

High output power: 1.5 mW, pigtail type



L8958-11

Features

- High output power: 1.5 mW
- High-speed response: 1.25 Gbps Max.
- 1.3 μm FP (Fabry-perot) laser

Applications

- Optical fiber communications

■ Absolute maximum ratings (Ta=25 °C)

Parameter	Symbol	Note	Value	Unit
Forward current (laser diode)	IF Max		Ith + 14 (CW)	mA
		Duty ratio 50 %	Ith + 28 (pulse)	
Operating temperature	Topr	*	-20 to +70	°C
Storage temperature	Tstg	*	-40 to +70	°C

* No condensation

■ Electrical and optical characteristics (Ta=25 °C, IF=Ith + 10 mA, unless otherwise noted)

Parameter	Symbol	Condition	Min.	Typ.	Max.	Unit
Forward voltage	VF	CW	-	1.1	1.3	V
Threshold current	Ith		-	5	15	mA
Fiber end output	PF	CW	-	1.5	-	mW
Peak emission wavelength	λ_p	CW	1290	1310	1330	nm
Rise/fall times	tr, tf	20 to 80 %	-	250	-	ps
Monitor current (photodiode)	Im	CW, VRM=3.5 V	-	0.4	-	mA
Dark current (photodiode)	ID	VRM=3.5 V	-	-	100	nA

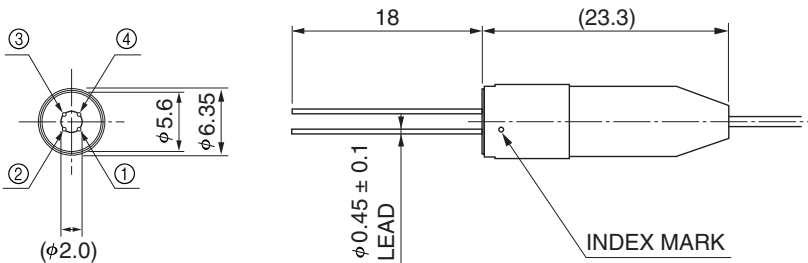
■ Package lineup

Configuration		L8958			
		-11	-12	-13	-14
Package	Type	Coaxial			
Fiber	Type	SM (9.5/125) ϕ 0.9			
	Length	1 m +20 cm/-0 cm			
Connector	Type	SC	FC	MU	LC
	Dimensional outline	①	②	③	④

■ Dimensional outlines (unit: mm, tolerance unless otherwise noted: ± 0.2)

Package

① Coaxial



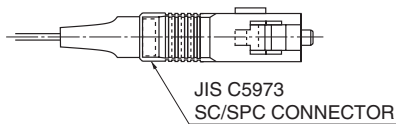
KLEDA0078EA

■ Pin connection

Pin No.	L8958 series
①	CASE
②	CATHODE (LD)
③	ANODE (PD)
④	CATHODE (PD) ANODE (LD)

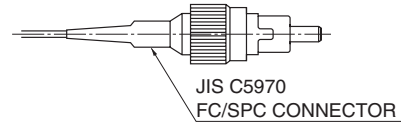
Connector

① SC



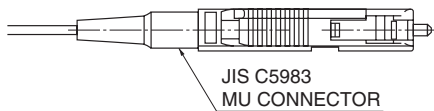
KIRDA0102EA

② FC



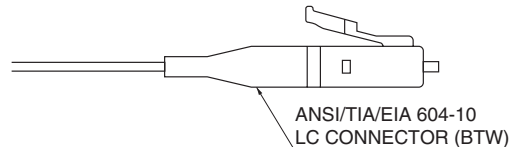
KIRDA0103EA

③ MU



KIRDA0164EA

④ LC



KIRDA0165EA