

150-LCCH Series

**FEATURES:**

- AC Input 100~277VAC
- Built-in Active PFC Function
- Protection: SCP / OVP / OTP
- Flicker Free
- High Operating Ambient Temp: -30°C~+60°C
- Surge protection: L-N 2KV, L-FG/N-FG 4KV
- Safety: UL 60950 / PSE / CB
- EMI: FCC Part 15 Class B / CE
- IP 67 Compliant
- Warranty: 5 years (refer to warranty policy)
- RoHS Compliant

PRODUCT SPECIFICATION

MODEL	DC OUTPUT POWER (W)	DC OUTPUT VOLTAGE (V)	OUTPUT CURRENT (A)	OUTPUT CURRENT TOLERANCE	EFFICIENCY (Typ.)				Power Factor (Typ.)			
					100VAC	120VAC	200VAC	277VAC	100VAC	120VAC	200VAC	277VAC
LCCH-150U240	151.2	18-24	6.3	±5%	87.0%	88.0%	90.0%	90.0%	0.98	0.98	0.95	0.95
LCCH-150U300	150	24-30	5	±5%	87.0%	88.0%	90.0%	90.0%	0.98	0.98	0.95	0.95
LCCH-150U360	151.2	30-36	4.2	±5%	88.0%	89.0%	91.0%	91.0%	0.98	0.98	0.95	0.95
LCCH-150U420	151.2	36-42	3.6	±5%	88.0%	89.0%	91.0%	91.0%	0.98	0.98	0.95	0.95
LCCH-150U480	153.6	40-48	3.2	±5%	88.0%	89.0%	91.0%	91.0%	0.98	0.98	0.95	0.95

Input Specifications

	Min.	Typ.	Max.	Units	Conditions/Description
Input Voltage Range	90		305	Vac	
Input Frequency Range	47		63	Hz	
Input Current		1.75		A	100VAC in
Inrush Current			65	A	230VAC in, 25°C Cold start
Leakage Current			0.45	mA	230VAC in
Power Factor (PF)	0.9				
Total Harmonics Distortion (THD)			15	%	100-277VAC, 100% load

Output Specifications

	Min.	Typ.	Max.	Units	Conditions/Description
Line Regulation			±3	%	
Load Regulation			±3	%	
Output Current Regulation			±5	%	
Ripple and Noise (pk-pk)			0.5	V	20MHz Bandwidth. See note (3)
Ripple Current		<30% of rated output current			*Measured at electronic load.
Turn-on Delay Time			2	s	*Measured at 100-277VAC and at full load

Protection Functions

	Min.	Typ.	Max.	Units	Conditions/Description
Short Circuit Protection					Auto recovery
Over Voltage Protection					Latching, See individual models OVP levels
Over Temp Protection (Tc)		105		°C	Latching, re-power on to recover

Environmental Conditions

	Min.	Typ.	Max.	Units	Conditions/Description
Operating Temperature (Ta)	-30		60	°C	Non-condensing
Operating Humidity	10		90	%RH	Non-condensing
Operating Case Temperature (Tc)			95	°C	Case temperature measured at the case hot spot Measured at 100Vac, Ta 60°C
Storage Temperature	-40		80	°C	Non-condensing
Storage Humidity	10		95	%RH	Non-condensing
Life Time	Measured at 277Vac, 45,000 hours at Tc 75°C.				
Dimensions(L*W*H)	208.4 * 72 * 38.5 mm 8.2 * 2.83 * 1.52 inch				
Weight		1000		g	

150-LCCH Series

Constant Current Mode

EMC Compliance and Safety		
EMC Compliance		
Conducted and Radiated Emission	EN 55015 (CISPR15) , FCC Part 15 Class B	
Harmonic Current Emissions	EN 61000-3-2 Class C	
Voltage Fluctuations & Flicker	EN 61000-3-3	
EMS Standards	Electrostatic Discharge (ESD)	IEC 61000-4-2
	RF Electromagnetic Field Susceptibility	IEC 61000-4-3
	Electrical Fast Transient	IEC 61000-4-4
	Surge Immunity	IEC 61000-4-5
	Conducted RF Disturbances	IEC 61000-4-6
	Power Frequency Magnetic Field	IEC 61000-4-8
	Voltage Dips	IEC 61000-4-11
Safety		
UL	UL60950	
PSE	PSE	
CB	IEC 61347-2-13 , IEC 61347-1	

Notes

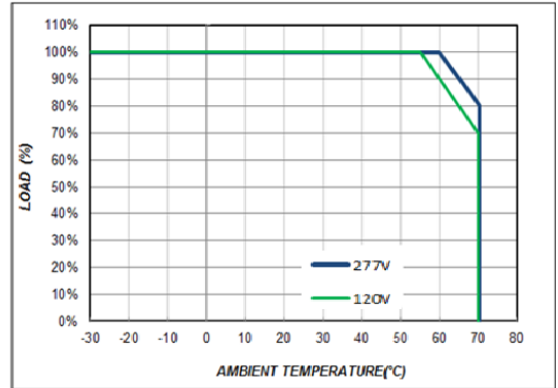
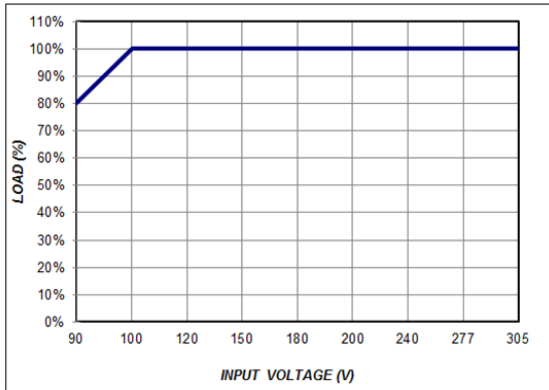
- (1) All parameters not specially mentioned are measured 230VAC input.
- (2) All specifications Typical @25°C , unless otherwise noted, at normal line and load.
- (3) Ripple and Noise measured directly at pins/terminals at nom. load, 0.1uF bypass and 47uF electrolytic, pk-pk @20MHz bandwidth.
- (4) Specified for free-air convection cooling.

* REFERENCE: www.linkcom.com.tw

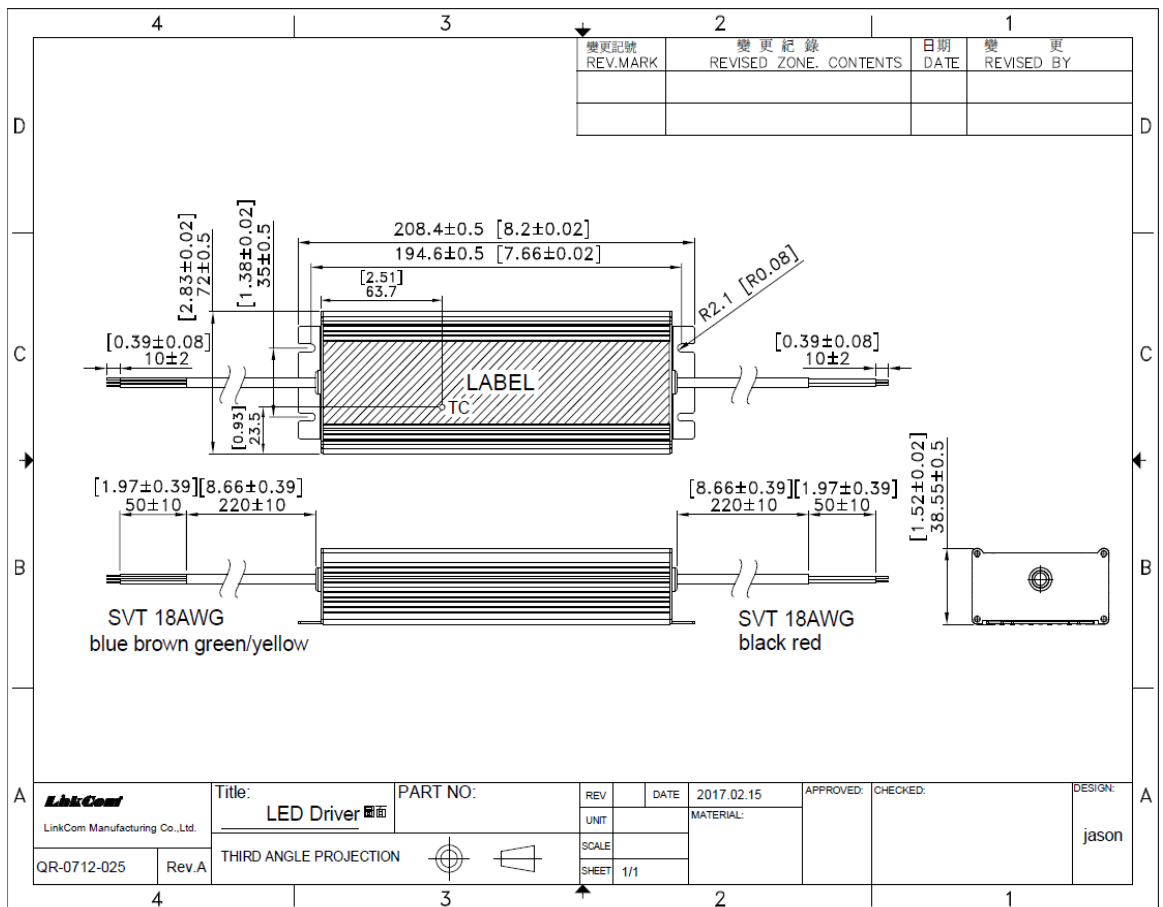
* Please contact sales@linkcom.com.tw, sales@linkcomusa.com for more information

150-LCCH Series

DERATING CURVE



DIMENSIONS

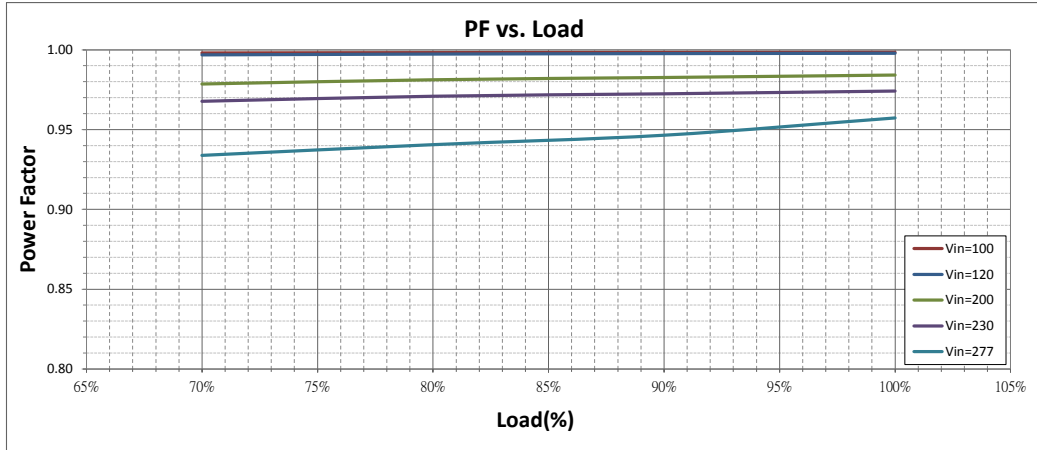


* REFERENCE: www.linkcom.com.tw

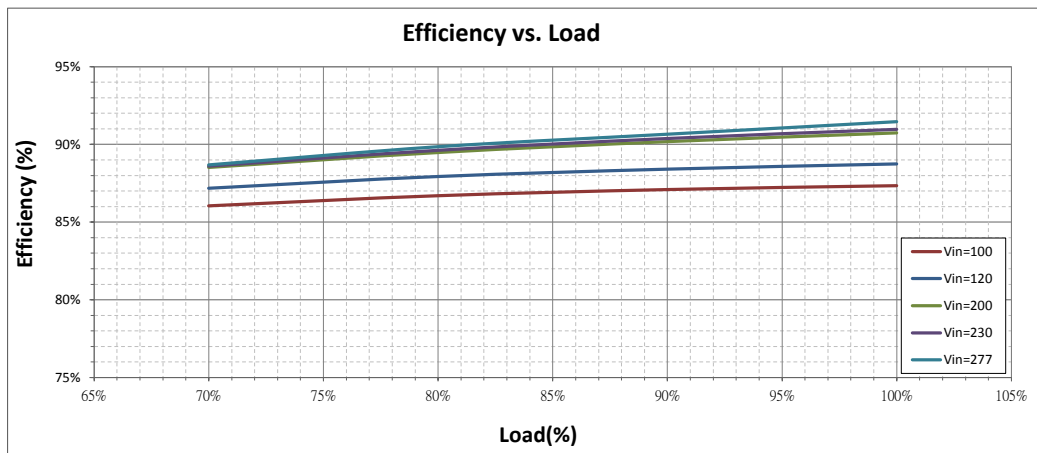
150-LCCH Series

Constant Current Mode

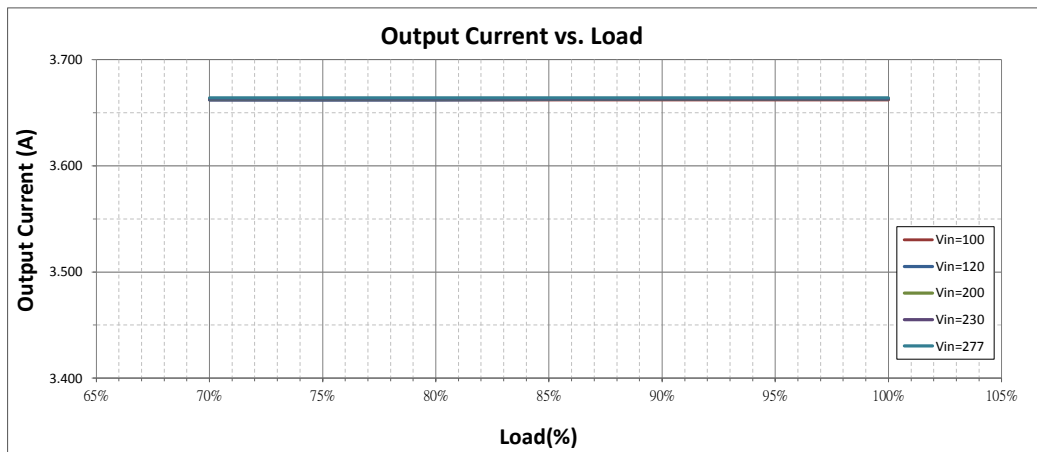
Power Factor vs. Load (LCCH-150U420)



Efficiency vs. Load (LCCH-150U420)



Output Current vs. Load (LCCH-150U420)



150-LCCH Series

THD vs. Load (LCCH-150U420)

Constant Current Mode

