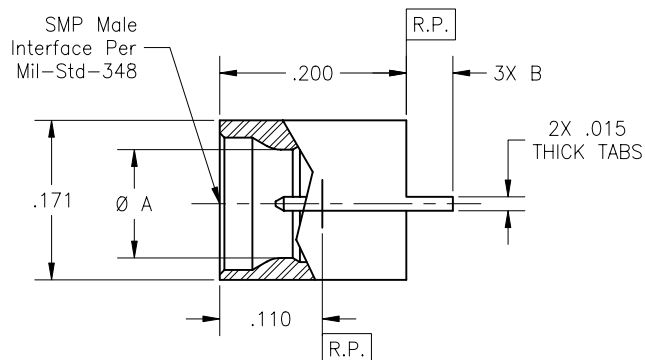
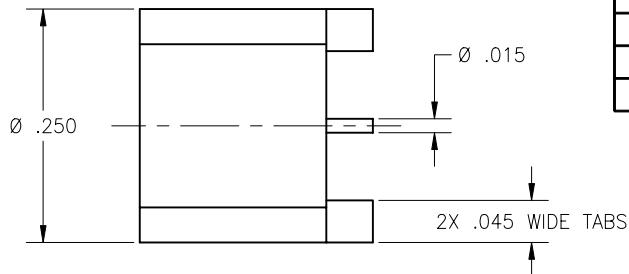
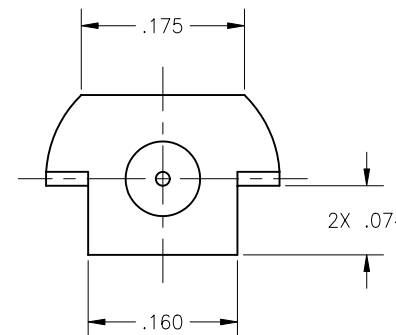


P/N	INTERFACE(S)	Ø A	B	C
-1CC	FULL DETENT	.116	.090	.095
-2CC	LIMITED DETENT	.120	.090	.095
-3CC	SMOOTH BORE	.125	.090	.095
-4CC	FULL DETENT	.116	.050	.055
-5CC	LIMITED DETENT	.120	.050	.055
-6CC	SMOOTH BORE	.125	.050	.055



REVISIONS				
ZONE	REV	DESCRIPTION	DATE	BY
-	L	ECO 21939	01.28.09	P.MAO



Note(s):

- Dimensions shown are for Rogers 4350 PCB material. These dimensions may vary depending on PCB material used.

MATERIAL(S):	ELECTRICAL:	MECHANICAL:	ENVIRONMENTAL:
Body & Center Conductor: BeCu alloy per ASTM B-196 or B 197. Dielectric: PTFE per ASTM D-1710.	Impedance: 50 Ohms nominal. Frequency Range: DC to 18.0 GHz. VSWR: 1.06 + .005 X f(GHz). Insertion Loss: 0.10 dB max to 18.0 GHz. Working Voltage: 335 Vrms max @ sea level. 65 Vrms max @ 70,000 ft. Dielectric Withstanding Voltage: 500 Vrms min. R.F. HiPot Voltage: 325 Vrms min @ 5MHz. Corona Level: 190 Vrms @ 70,000 ft. Insulation Resistance: 5,000 MegOhms min. Contact Resistance: Center Contact: 4.0 Milliohm max. Outer Contact: 2.0 Milliohm max. R.F. Leakage: -80 dB max to 3.0 GHz. -60 dB max to 18.0 GHz.	Mating Characteristics: Interface per Mil-Std-348. Force To Engage: Full Detent: 15 lbs max Limited Detent: 10 lbs max Smooth Bore: 2 lbs max Force To Disengage: Full Detent: 5 lbs min Limited Detent: 2 lbs min Smooth Bore: .5 lbs min Center Contact Retention: Axial Force: 1.5 pounds min. Note: 10 lbs min when contact is soldered onto PCB. Radial Torque: NA Connector Durability: Full Detent: 100 cycles min. Limited Detent: 500 cycles min. Smooth Bore: 1,000 cycles min. Connector Attachment Strength: 20 lbs max. Note: Depend on the solder techniques.	Temperature Range: -65°C to +165°C. Thermal Shock: Mil-Std-202, Method 107, Test Cond. C. Moisture Resistance: Mil-Std-202, Method 106, except step 7b shall be omitted. Insulation resistance at least 1,000 MegOhms within 5 minutes after removal from humidity. Corrosion: Mil-Std-202, Method 101, Test Cond. B. Vibration: Mil-Std-202, Method 204, Test Cond. D. Shock: Mil-Std-202, Method 213, Test Cond. I.

FINISH(ES):
Body & Center Conductor: Gold plate per ASTM B-488, Type II, Code C or D, Class 1.25 over nickel under plated per SAE AMS-QQ-N-290, Class 1.

APPLICABLE CARLISLE IT DOCUMENTS		
WORK STD	PROD INST	ASSY INST
NA	NA	NA

TOLERANCES AND NOTES EXCEPT AS NOTED	
DIMENSIONS ARE IN INCHES	
LINEAR .XX ±.015	ANGULAR ± 1/2°
.XXX ±.005	FRACTION ± 1/32

NOTICE
 THIS DRAWING EMBODIES A CONFIDENTIAL PROPRIETARY DESIGN ORIGINATED BY CARLISLE INTERCONNECT TECHNOLOGIES AND ALL DESIGN, MANUFACTURING, REPRODUCTION, USE AND SALE RIGHTS REGARDING THE SAME ARE EXPRESSLY RESERVED. IT IS SUBMITTED UNDER A CONFIDENTIAL RELATIONSHIP FOR A SPECIFIED PURPOSE AND THE RECIPIENT AGREES BY ACCEPTING THIS DRAWING NOT TO SUPPLY OR DISCLOSE ANY INFORMATION REGARDING IT TO ANY UNAUTHORIZED PERSON TO INCORPORATE IN OTHER PROJECTS ANY SPECIAL FEATURE PECULIAR TO THIS DESIGN. ALL PATENT RIGHTS HERETO ARE EXPRESSLY RESERVED BY CARLISLE INTERCONNECT TECHNOLOGIES, LONG BEACH, CA 90815

MATERIAL		SIZE	SPECIFICATION	PROCUREMENT
APPROVAL INITIALS	DATE	CARLISLE Interconnect Technologies Long Beach, CA 90815		
DRAWN BY	DATE			
CHECKED BY	DATE			
TEST ENGG	DATE			
QUALITY	DATE	TITLE SMP MALE, PCB EDGE MOUNT TO Ø .015 STRAIGHT TERMINATION SCALE 10:1 SUB-DIRECTORY\FILENAME _OLPXXX\OLP606 SHEET 1 OF 2		
DESIGN ENGG	DATE	SIZE	CAGE CODE	DRAWING NO.
MFG ENGG	DATE	C	30990	P606

4

3

2

1

D

D

C

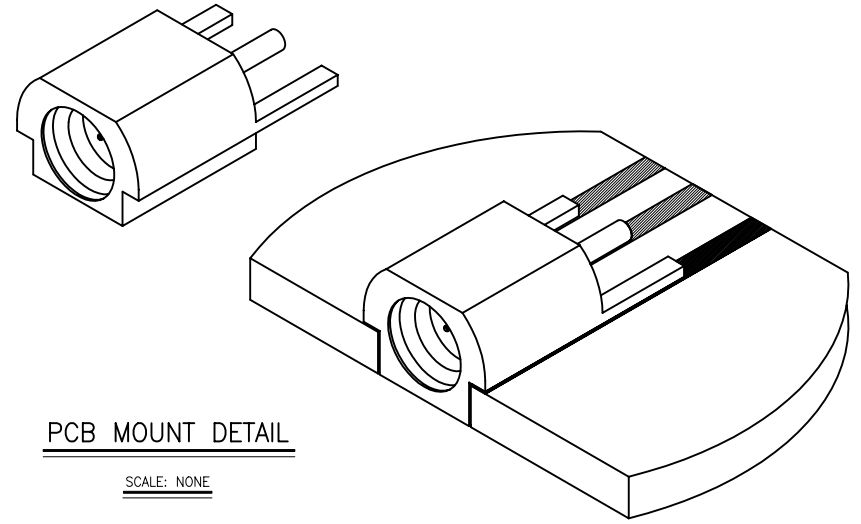
C

B

B

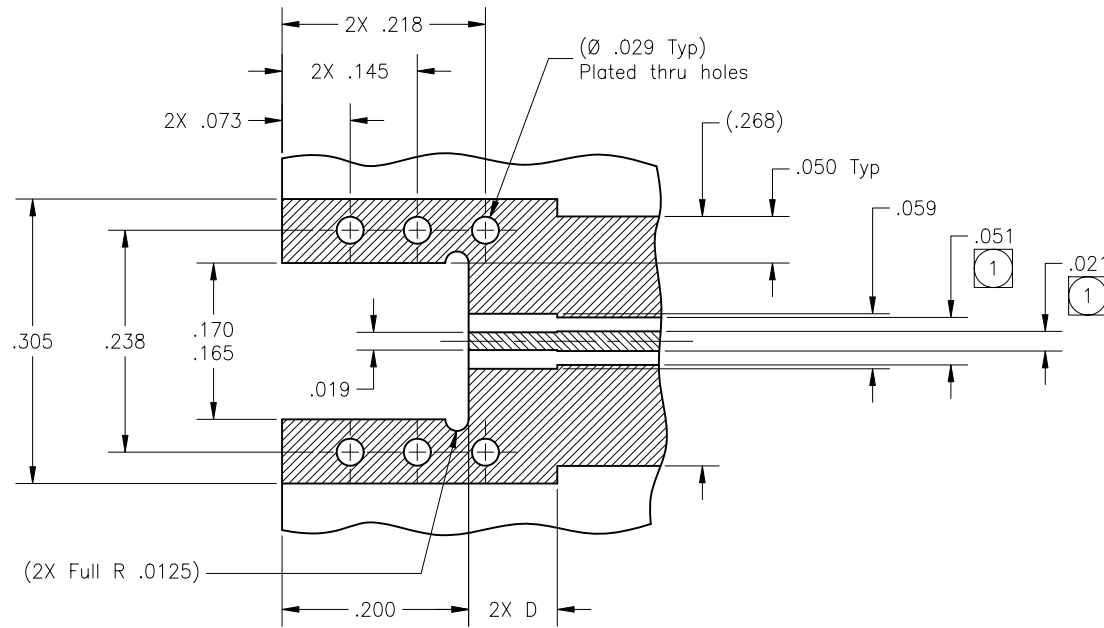
A

A



PCB MOUNT DETAIL

SCALE: NONE



RECOMMENDED PCB CUTOUT

SCALE: 10:1

SCALE 10:1	SUB-DIRECTORY\FILENAME _OLPXXX\OLP606	SHEET 2 OF 2
SIZE C 30990	DRAWING NO. P606	REV. L