

60-LCVE Series

**FEATURES:**

- AC Input 100~277VAC
- Built-in Active PFC Function
- Protection: SCP / OVP / OTP / OCP
- High Operating Ambient Temp: -20°C~+60°C
- Surge protection: L-N 1KV, L-FG/N-FG 2kV
- Safety: UL 879 / PSE
- EMI: CE / FCC Part 15 Class B
- IP 67 Compliant
- Warranty: 5 years (refer to warranty policy)
- RoHS Compliant

PRODUCT SPECIFICATION

MODEL	DC OUTPUT POWER (W)	DC OUTPUT VOLTAGE (V)	OUTPUT CURRENT (A)	OUTPUT VOLTAGE TOLERANCE	EFFICIENCY (Typ.)				Power Factor (Typ.)			
					100VAC	120VAC	200VAC	277VAC	100VAC	120VAC	200VAC	277VAC
LCVE-060U125	60	12	5	±5%	83.5%	84.5%	85.0%	85.5%	0.98	0.98	0.96	0.92
LCVE-060U240	60	24	2.5	±5%	86.5%	87.5%	87.9%	88.5%	0.98	0.98	0.96	0.9

Input Specifications

	Min.	Typ.	Max.	Units	Conditions/Description
Input Voltage Range	90		305	Vac	
Input Frequency Range	47		63	Hz	
Input Current		0.75		A	100VAC in
Inrush Current			50	A	230VAC in, 25°C Cold start
Leakage Current			0.7	mA	230VAC in
Power Factor (PF)	0.9				
Total Harmonics Distortion (THD)		N/A		%	100-277VAC, 100% load

Output Specifications

	Min.	Typ.	Max.	Units	Conditions/Description
Line Regulation			±3	%	
Load Regulation			±3	%	
Output Voltage Regulation			±5	%	
Ripple and Noise (pk-pk)			0.2	V	20MHz Bandwidth. See note (3)
Turn-on Delay Time			1	s	*Measured at 100-277VAC and at full load

Protection Functions

	Min.	Typ.	Max.	Units	Conditions/Description
Short Circuit Protection					Auto recovery
Over Voltage Protection					Latching, See individual models OVP levels
Over Current Protection			160%	I _o	Auto recovery
Over Temp Protection (T _c)		100		°C	Latching, re-power on to recover

Environmental Conditions

	Min.	Typ.	Max.	Units	Conditions/Description
Operating Temperature (T _a)	-20		60	°C	Non-condensing
Operating Humidity	10		90	%RH	Non-condensing
Operating Case Temperature (T _c)			90	°C	Case temperature measured at the case hot spot Measured at 100Vac, T _a 60°C
Storage Temperature	-40		80	°C	Non-condensing
Storage Humidity	10		95	%RH	Non-condensing
Life Time	Measured at 277Vac, 45,000 hours at T _c 75°C .				
Dimensions(L*W*H)	170 * 53 * 32 mm 6.69 * 2.09 * 1.26 inch				
Weight			650	g	

60-LCVE Series

Constant Voltage Mode

EMC Compliance and Safety			
EMC Compliance			
Conducted and Radiated Emission	FCC Part 15 Class B		
Harmonic Current Emissions	Comply with EN 61000-3-2		
Voltage Fluctuations & Flicker	Comply with EN 61000-3-3		
EMS Standards	Electrostatic Discharge (ESD)	Comply with IEC 61000-4-2	8 KV air discharge, 4 KV contact discharge
	RF Electromagnetic Field Susceptibility	Comply with IEC 61000-4-3	
	Electrical Fast Transient	Comply with IEC 61000-4-4	
	Surge Immunity	Comply with IEC 61000-4-5	L-N 1KV, L-FG/N-FG 2kV
	Conducted RF Disturbances	Comply with IEC 61000-4-6	
	Power Frequency Magnetic Field	Comply with IEC 61000-4-8	
	Voltage Dips	Comply with IEC 61000-4-11	
Safety			
UL		UL 879	
PSE		PSE	

Notes

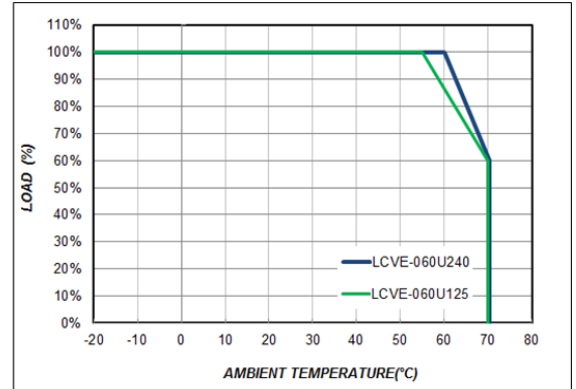
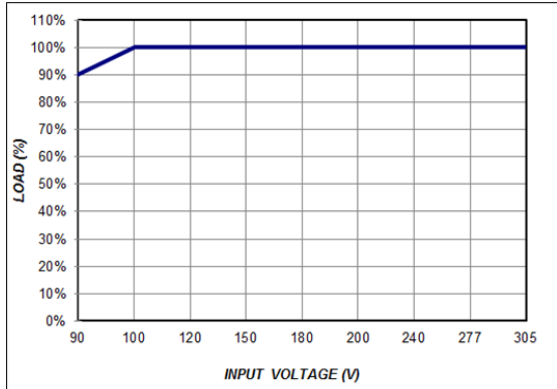
- (1) All parameters not specially mentioned are measured 230VAC input.
- (2) All specifications Typical @25°C , unless otherwise noted, at normal line and load.
- (3) Ripple and Noise measured directly at pins/terminals at nom. load, 0.1uF bypass and 47uF electrolytic, pk-pk @20MHz bandwidth.
- (4) Specified for free-air convection cooling.
- (5) Operating in minimum load is not proper requirement

* REFERENCE: www.linkcom.com.tw

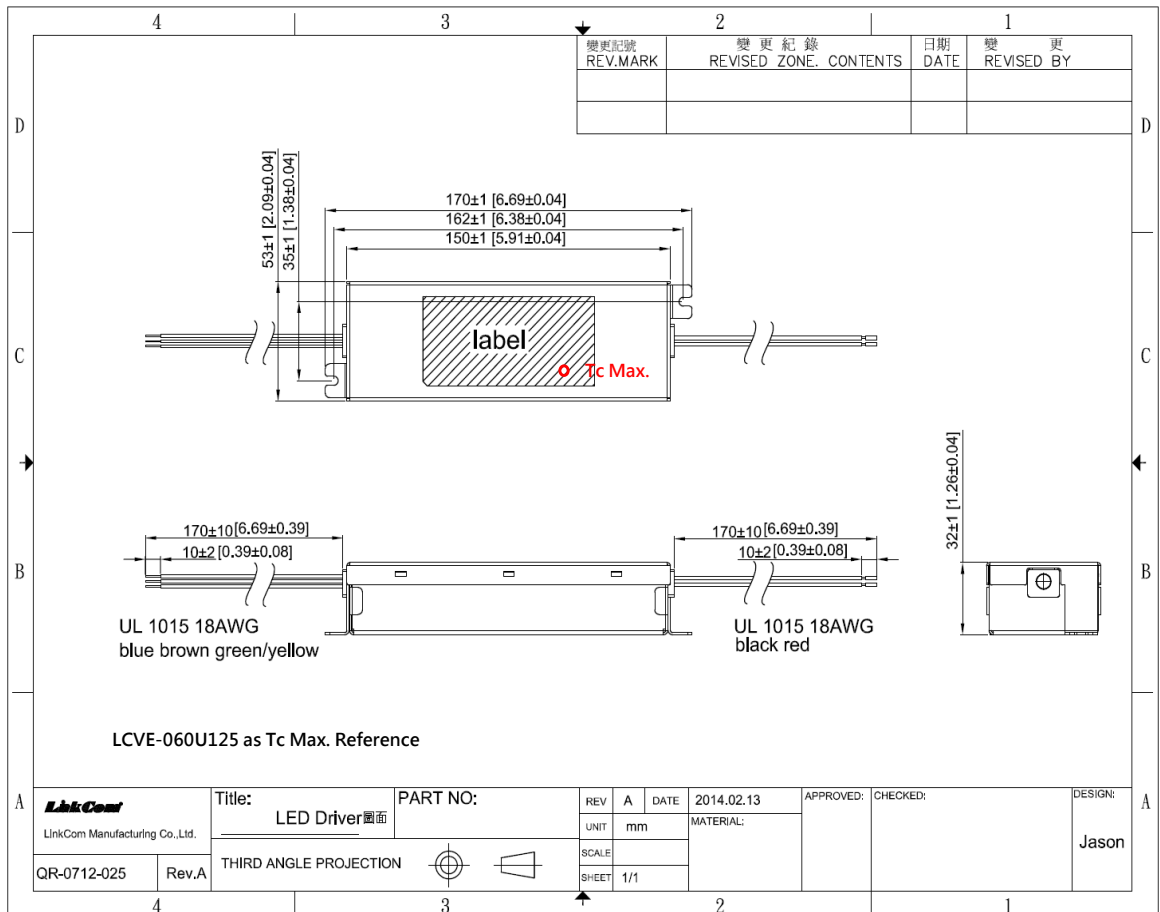
* Please contact sales@linkcom.com.tw, sales@linkcomusa.com for more information

60-LCVE Series

DERATING CURVE



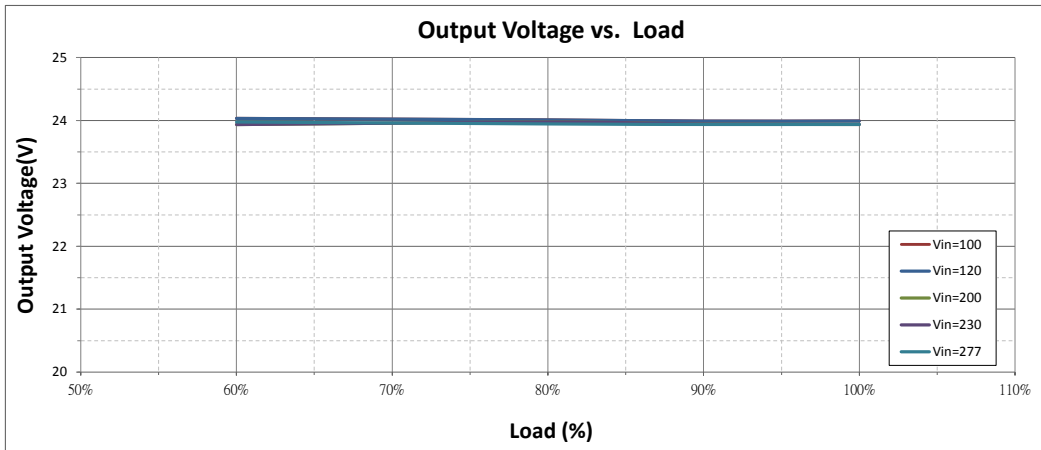
DIMENSIONS



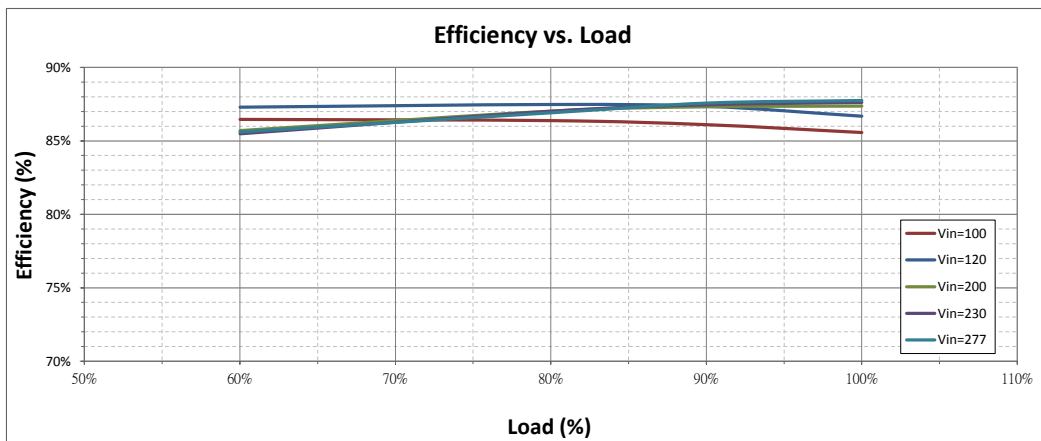
* REFERENCE: www.linkcom.com.tw

60-LCVE Series

Output Voltage vs. Load (LCVE-060U240)



Efficiency vs. Load (LCVE-060U240)



PF vs. Load (LCVE-060U240)

