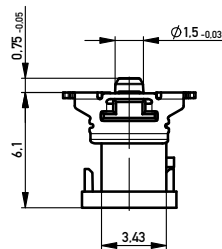
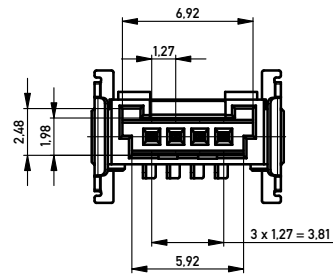
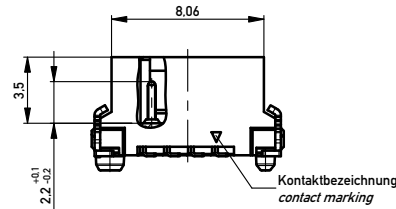
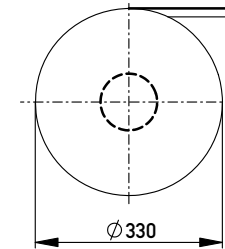


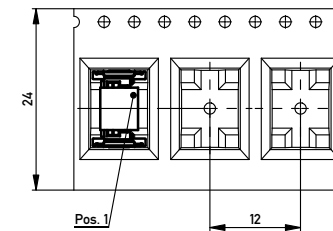
ohne Ansaughaube - without hood



Verpackt im Gurt nach DIN IEC 60286-3
 Tape on Reel Packaging according to DIN IEC 60286-3
 Verpackungseinheit: 650 Stück
 Packaging unit: 650 pcs



Abspulrichtung - Reel off Direction



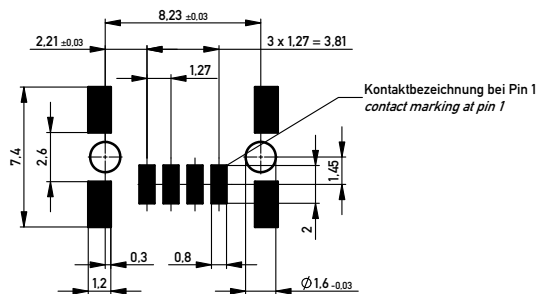
Anforderungsstufe 1
 Performance Level 1

Kontaktbereich vergoldet
 Mating Area gold plating

Anschlussbereich verzinkt 4-6 µm
 Terminal Area 4-6 µm tin plating

Koplanarität der Anschlüsse ≤ 0.1 mm
 Coplanarity Area of Termination ≤ 0.1 mm

Leiterplatten-Layout für SMT
 PCB-Layout for SMT



Für die Anforderung nach PG 9 der LV214
 (Koshiri-Sicherheit)

For the requirement of the LV214 PG 9
 (Koshiri-security)

Information:	Tolerances		Scale	5:1
All rights reserved. Only for Information. To ensure that this is the latest version of this drawing, please contact one of the ERNI companies before using.	Subject to modification without prior notice. Drawing will not be updated.	All Dimensions in mm	Designation	
			M 1.27 SRC P. 4-polig KS M 1.27 SRC P. 4-pin KS	
www.ERNI.com			4741271	I A2
Index	Date		Class	SRCP

Copyright by ERNI GmbH
 Proprietary notice pursuant to ISO 16949 to be observed