



LEOPARD IMAGING INC

Rev. 1.0

Key Features

- OmniVision CMOS 1.3MP HDR Sensor OV10640
- Optical format: 1/2.56"
- Active pixels: 1280H x 1080V
- Pixel size: 4.2 um x 4.2 um
- Support WDR(Wide Dynamic Range)
- Color camera, Rolling shutter
- Single Coax Cable transmit up to 15 meter PoC(Power over Cable)
- 2 Boards are stacked
- Power consumption: 235mA @ 5V
- Support 5 V and 12V Power
- Weight: 18 g
- Part#: **LI-OV10640-490-SER**



Applications

- Machine Vision
- Medical Camera
- Automotive Camera
- Scientific Camera

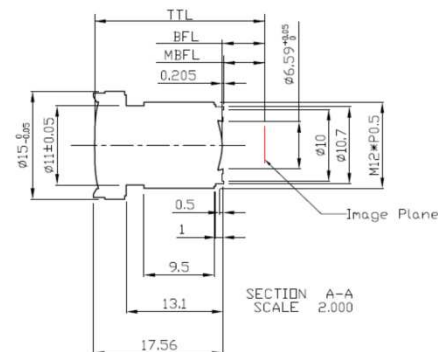
LI-OV10640-490-SER

Data Sheet



Lens Spec

- Model: YC-155N
- Focal length: 2.8 mm
- Aperture, F/#: 2.0
- Built in 650nm IR cut filter
- FOV (D/H/V): 125.5° / 104.5° / 88°
- TV Distortion: < 12%
- Mount: M12 x P0.5



Interface

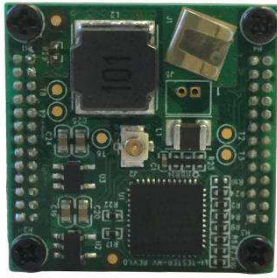
- Part#: U.FL-R-SMT(10)
- Connector Style: U.FL
- Connector Type: Jack, Male Pin
- Fastening Type: Snap-On



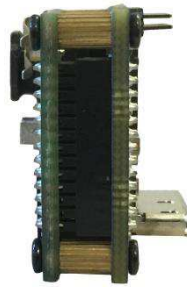
Leopard Imaging Inc.

1130 Cadillac Ct., Milpitas, CA 95035, USA
Phone: +1-408-263-0988
Fax: +1-408-217-1960
Email: sales@leopardimaging.com
Website: www.leopardimaging.com
www.leopard-security.com

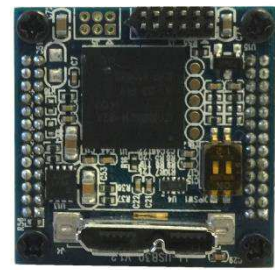
LI-TESTER-NV



Front View

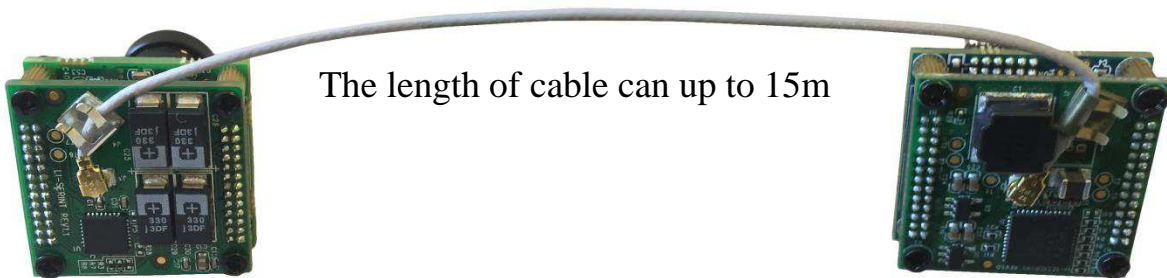


Side View



Back View

LI-OV10640-490-SER can connect to USB 3.0 EVA module LI-TESTER-NV as a USB 3.0 camera. Part#: **LI-USB30-OV10640-490-SER**



The length of cable can up to 15m

Key Features

- USB 3.0 Super Speed support
- YUV output without compression
- UVC compliance
- Provide customization services
- USB +5VDC powered device
- Support WDR
- Weight: 30 g
- Single Coax Cable transmit up to 15 meter PoC(Power over Cable)

SDK Supported

- Camera Tool Source Code in C#
- Capture & Display



LI-USB30-OV10640-490-SER SPEC

General Behavior		
Video Resolution @ Frame rate	1280 x 1080 @ 30 fps	
Sensitivity	TBD	
Dynamic range	TBD	
Interface (Optical)		
IR cut filter (on lens)	Yes, 650nm IR cut filter	
Sensor specification	OmniVision CMOS 1.3MP HDR Sensor OV10640	
Shutter	Rolling	
Format	1/2.56"	
Resolution	H:1280, V:1080	
Pixel size	H:4.2 um, V:4.2 um	
WDR	Support WDR (Wide Dynamic Range)	
Lens mount	M12 lens mount support	
ISP	OV490	
Interface (Electrical)		
Interface	USB 3.0	
Supply voltage	USB 3.0 +5 VDC power source	
Current consumption	Approx. 425 mA at 5 VDC	
Interface (Mechanical)		
Dimensions	LI-OV10640-490-SER	L: 26 mm, W: 26 mm, H: 35 mm
	LI-TESTER-NV	L: 26 mm, W: 26 mm, H: 12 mm
Mass (two modules)	30 g	
Adjustment (Manual)		
Shutter	TBD	
Gain	TBD	
Adjustment (Auto)		
Shutter	TBD	
Gain	TBD	
Environmental		
Max. temperature (operation)	0 °C ~ 50 °C (32 °F~ 122 °F)	
Max. temperature (storage)	-20 °C ~ 80 °C (-4 °F~176 °F)	
Max. humidity (operation)	20 % ~ 80 %, relative, non-condensing	
Max. humidity (storage)	20 % ~ 80 %, relative, non-condensing	



Leopard Imaging Inc.

1130 Cadillac Ct., Milpitas, CA 95035, USA
 Phone: +1-408-263-0988
 Fax: +1-408-217-1960
 Email: sales@leopardimaging.com
 Website: www.leopardimaging.com
 www.leopard-security.com