



Data Sheet



Product Category: IF SAW Filter

Part Number	Package	Application	Last Modified
820-IF75.0M-J	20.2 x 12.6 Thru Hole	Base Station & Repeater	Jan. 01, 2007

TYPE :

75.0 MHz Bandpass Filter

21.40 MHz Bandwidth

PART NUMBER :

820-IF75.0M-J

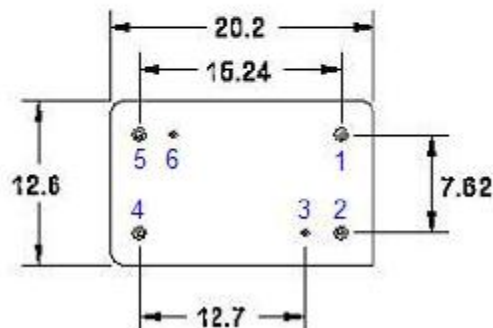
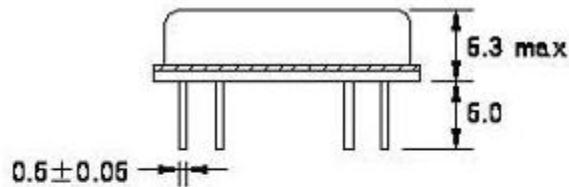


OPERATING CONDITIONS / ELECTRICAL CHARACTERISTICS

PARAMETERS	Minimum	Typical	Maximum	Units
Center Frequency (Fo)	-	75.0	-	MHz
Insertion Loss at Fo	-	20.6	23.5	dB
Source Impedance (single ended)*	-	50	-	ohm
Load Impedance (single ended)*	-	50	-	ohm
-1.0dB Bandwidth	-	20.90	-	MHz
-3.0dB Bandwidth	-	21.40	-	MHz
-40.0dB Bandwidth	-	23.60	-	MHz
-50.0dB Bandwidth	-	23.85	-	MHz
Amplitude Ripple	-	0.55	1.0	dBp-p
Group Delay Variation (smo 0.5%)	-	54	-	nsec
Absolute Delay at Fo	-	1.72	-	µsec
Ultimate Rejection	55	60	-	dB
Temperature Coefficient	-	-72	-	ppm/°C

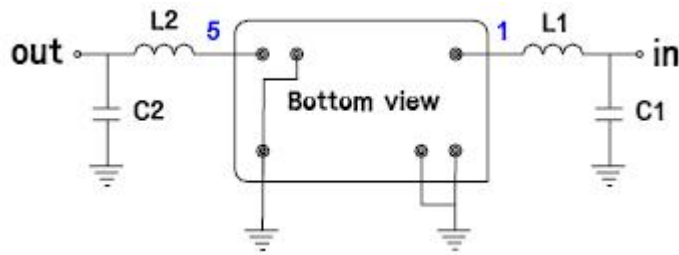
*With Matching Network (Ref. Testing Environment Circuit as shown below)
 Those impedances could be modified with different impedance values and/or structures, if necessary.

PACKAGE OUTLINE (mm)



PIN DESCRIPTIONS: IN - 1, OUT - 5, GROUND - 2,3,4,6

TEST CIRCUIT

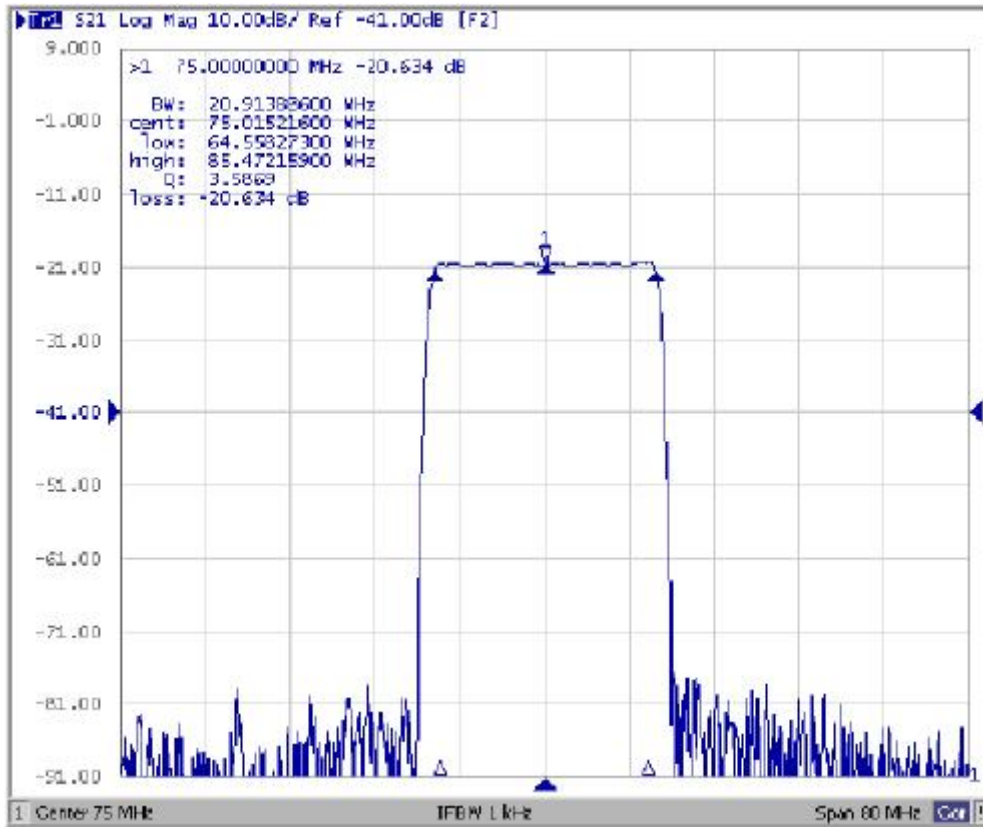


TEST FIXTURE AND VALUES/SOURCE AND LOAD IMPEDANCE 50 ohm

INPUT: L1: 150 nH; C1: 12 pF

OUTPUT: L2: 180 nH; C2: 12 pF

FREQUENCY RESPONSE



Oscilent Corporation - CALL 949.252.0522

Part No.: 820-IF75.0M-J

18195 East McDermott Street, Building D, Irvine, CA 92614, USA

Fax: 949.252.0599, E-Mail: Sales@Oscilent.com