

# SMT1

## Surface Mount Tactile Switches

Washable



RoHS Compliant



### ■ Features

#### 1. Compatible With Lead-Free, Reflow Soldering

Heat-resistance resin for lead-free soldering.

#### 2. Washable

#### 3. 180° Symmetric Terminal Pin Layout.

#### 4. Anti-Static Electricity

Ground terminal is provided to prevent damage to element caused by static electricity.

#### 5. Metal contact for sharp tactile feel.

### ■ Specifications

Contact plating		Silver plated	Gold plated
Rating	Max.	1VA Max. (50mA max.48VDC max.)	
	Min.	0.5mA 20mVDC	10μA 20mVDC
Initial contact resistance		100mΩ Max. {1.5mA 200μVAC at 1.96N [200gf] force}	
Dielectric strength		250VAC 1 minute	
Insulation resistance		100MΩ min.	(100VDC)
Electrical life		1000,000 operations	
Stroke		0.5±0.3 mm	
Operating force		1.96±0.98N	
Operating temperature range		-25~+70°C	
Storage temperature range		-40~+70°C	

### ■ Part Numbering

**SMT G 1 - 01 E - Z**

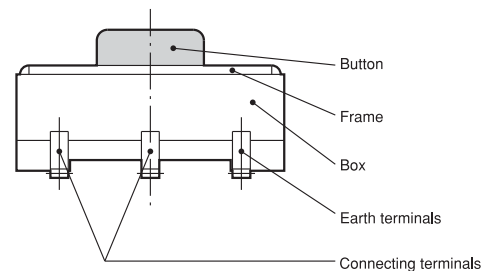
Series code      Contact plating      Structure      Registration No.      Packaging specifications

None	Silver plated
<b>G</b>	Gold plated

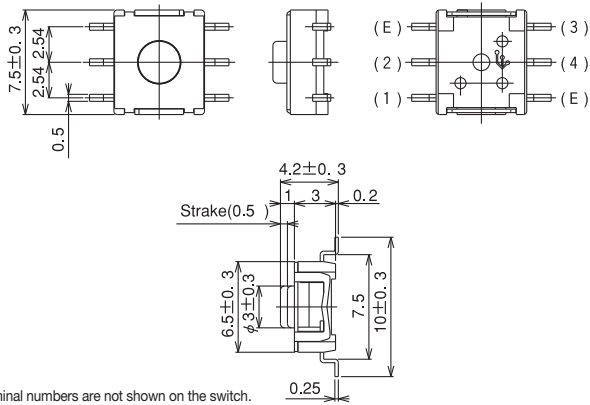
Packaging specifications

<b>None</b>	Stick
<b>E</b>	Emboss taping

### ■ Structure



SPST



Terminal numbers are not shown on the switch.

Part No.	Switching function		Circuit diagrams
	OFF	Push (ON)	
SMT1-01-Z SMTG1-01-Z	OFF	(ON)	
Connecting terminals	—	(2) — (1) (3) — (4)	

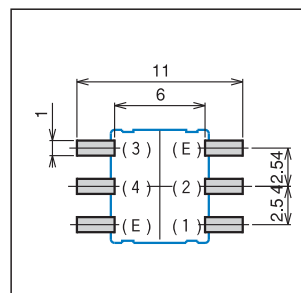
(ON) : Momentary

Table of Part Numbers

Contact plating	Part No.
Silver plated	SMT1-01-Z SMT1-01E-Z
Gold plated	SMTG1-01-Z SMTG1-01E-Z

Pad Layouts

(Top view)



Terminal (E) to be connected to Ground. Terminal (E) is connected to the metal frame.

Soldering Specifications

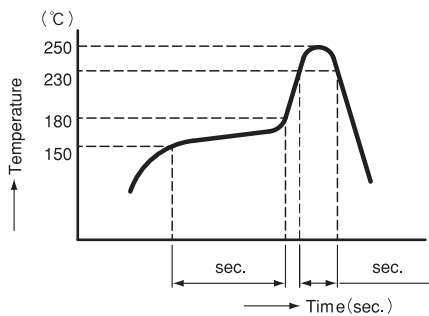
(1) Manual Soldering

Device : Soldering iron

① 380°C ±10°C; 3±0.5 seconds

(2) Reflow Soldering

Device : Inline or batch system



Apply reflow soldering only once

Flux Cleaning ..... Refer to P. 229.

Packaging Specifications

Stick specification	Emboss taping specification

Minimum packaging quantity for reel packaging is 1,000pcs per reel.