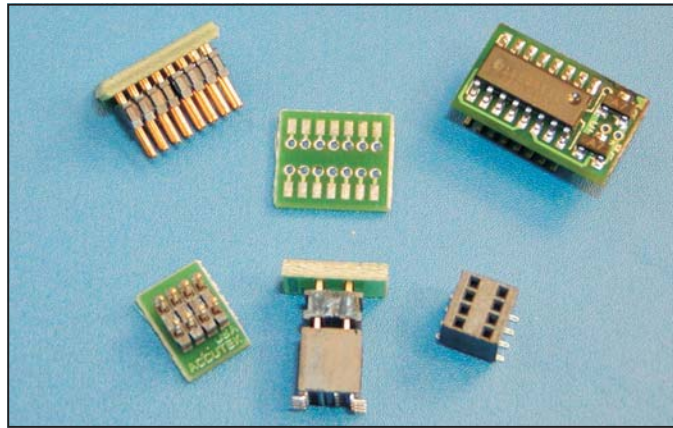


## SOIC ADAPTER SOCKETS



**DO YOU REMEMBER WHEN YOU COULD SOCKET THAT DIP IC FOR  
REMOVAL OR LATER REPLACEMENT, BUT NOW YOUR IC AND PC  
BOARD IS DESIGNED FOR SURFACE MOUNT**

**NOW YOU CAN SOCKET THAT SOIC PACKAGE AND SOLDER THE  
SOCKET TO THE SITE THAT WAS DESIGNED FOR SURFACE MOUNT**

### DESCRIPTION

The Accutek family of SOIC Adapter Sockets is designed to allow the socketing of an SOIC packaged device onto the site originally designed for a surface mount component.

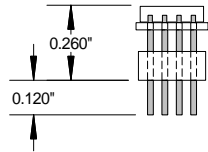
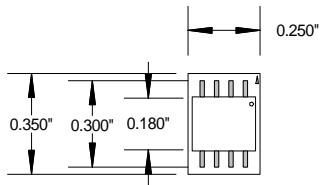
This system consists of an adapter module constructed of a small PC Board with pins protruding out of the bottom and the SOIC is soldered onto the top surface. A surface mount socket is soldered onto your motherboard in the site that was designed to accept the SOIC device.

The adapter may now be inserted into the socket and removed at any time for testing or replacement.

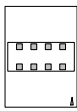
### FEATURES

- Socket adapters for 8, 14, 16, 18, and 20 pin SOIC devices
- Solders to the PCB site designed for standard surface mount SOIC's
- Adapter comes fully assembled
- Can be provided as assembly only or full turnkey
- Custom configurations for special applications
- Ideal for Serial EEPROMs, programming of adapter also available

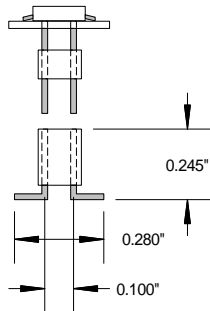
**AK08SOIC-ST**  
8 PIN SOIC



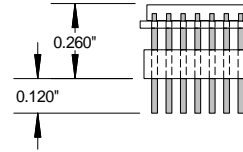
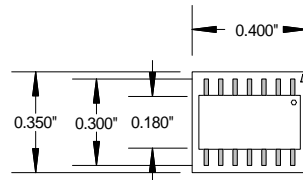
BOTTOM VIEW



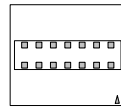
END VIEW OF ADAPTER  
ABOUT TO BE INSERTED  
INTO THE SOCKET



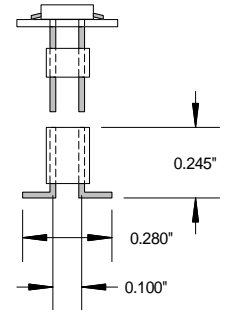
**AK14SOIC-ST**  
14 PIN SOIC



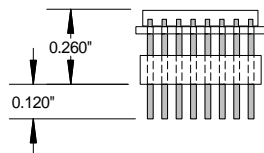
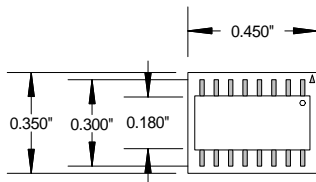
BOTTOM VIEW



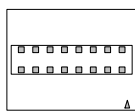
END VIEW OF ADAPTER  
ABOUT TO BE INSERTED  
INTO THE SOCKET



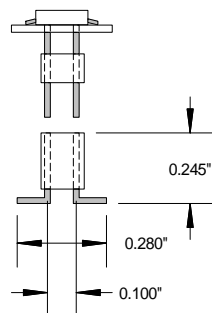
**AK16SOIC-ST**  
16 PIN SOIC



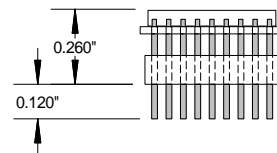
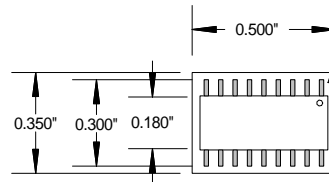
BOTTOM VIEW



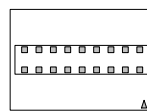
END VIEW OF ADAPTER  
ABOUT TO BE INSERTED  
INTO THE SOCKET



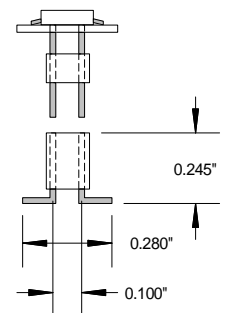
**AK18SOIC-ST**  
18 PIN SOIC



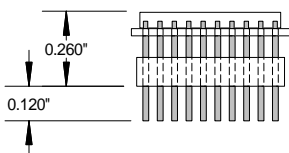
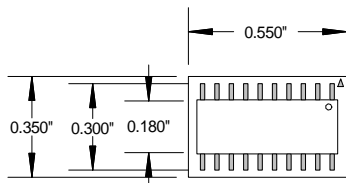
BOTTOM VIEW



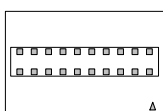
END VIEW OF ADAPTER  
ABOUT TO BE INSERTED  
INTO THE SOCKET



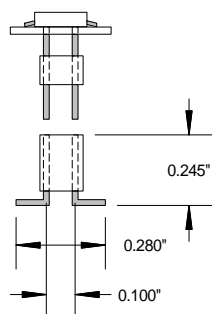
**AK20SOIC-ST**  
20 PIN SOIC



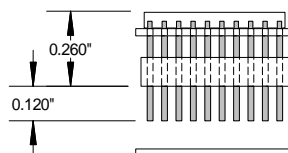
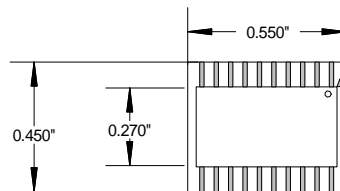
BOTTOM VIEW



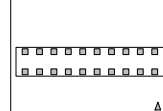
END VIEW OF ADAPTER  
ABOUT TO BE INSERTED  
INTO THE SOCKET



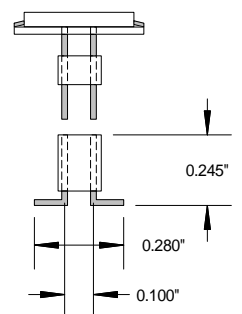
**AK20WSOIC-ST**  
WIDE 20 PIN SOIC



BOTTOM VIEW



END VIEW OF ADAPTER  
ABOUT TO BE INSERTED  
INTO THE SOCKET



# AK08DS-SOSPA

8 PIN PROGRAMMING ADAPTER FOR EEPROM  
SOIC SOCKET. THIS ALLOWS PROGRAMMING  
USING PROGRAMMERS STANDARD DIP SOCKET

OTHER PIN COUNT PROGRAMMING  
OR TEST SOCKETS ARE AVAILABLE  
FOR THIS PRODUCT. CONSULT THE  
FACTORY FOR PART NUMBER AND  
AVAILABILITY.

