

## Han 16HP Direct/B-HTE-M40

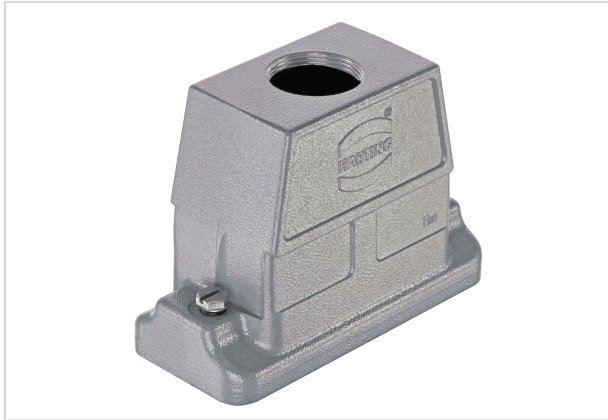


Image is for illustration purposes only. Please refer to product description.

Part number	19 39 616 0448
Specification	Han 16HP Direct/B-HTE-M40
HARTING eCatalogue	<a href="https://b2b.harting.com/19396160448">https://b2b.harting.com/19396160448</a>

### Identification

Category	Hoods/Housings
Series of hoods/housings	Han <sup>®</sup> HP Direct B
Type of hood/housing	Hood

### Version

Locking type	Screw locking
Size	16 B
Version	Top entry
Cable entry	1x M40

### Technical characteristics

Tightening torque (screw locking)	4 Nm
Limiting temperature	-40 ... +125 °C
Degree of protection acc. to IEC 60529	IP66 IP68 IP69 / IPX9K acc. to ISO 20653

### Material properties

Material (hood/housing)	Aluminium die-cast
Surface (hood/housing)	Powder-coated
Colour (hood/housing)	RAL 7037 (dust grey)
Material (seal)	NBR
Material (locking)	Stainless steel
RoHS	compliant



Pushing Performance

## Material properties

ELV status	compliant
China RoHS	e
REACH Annex XVII substances	No
REACH ANNEX XIV substances	No
REACH SVHC substances	No

## Specifications and approvals

Specifications	EN 60664-1 IEC 61984
CE	Yes

## Commercial data

Packaging size	1
Net weight	328 g
Country of origin	China
European customs tariff number	85389099
eCl@ss	27440202 Shell for industrial connectors