

## **Introduction**

The purpose of this document is to describe the design of the application command interface (ACI) of the BlueNRG-MS Bluetooth<sup>®</sup> low energy (LE) stack. This document specifies the list of commands supported by the BlueNRG-MS ACI.

# Contents

- 1 Overview ..... 7**
  - 1.1 BlueNRG-MS ACI architecture ..... 8
- 2 ACI command data format ..... 9**
  - 2.1 Overview ..... 9
  - 2.2 HCI command packet ..... 9
  - 2.3 HCI event packet ..... 11
  - 2.4 HCI ACL data packet ..... 11
- 3 Standard HCI commands ..... 12**
  - 3.1 Supported HCI commands ..... 12
  - 3.2 Supported HCI events ..... 13
  - 3.3 Correct use of HCI commands ..... 14
- 4 Vendor specific commands ..... 15**
  - 4.1 VS command and VS event format ..... 15
  - 4.2 L2CAP VS commands and events ..... 17
    - 4.2.1 L2CAP VS commands ..... 17
    - 4.2.2 Aci\_L2CAP\_Connection\_Parameter\_Update\_Request ..... 17
    - 4.2.3 Aci\_L2CAP\_Connection\_Parameter\_Update\_Response ..... 18
    - 4.2.4 L2CAP VS events ..... 19
    - 4.2.5 Evt\_Blue\_L2CAP\_Connection\_Update\_Resp ..... 19
    - 4.2.6 Evt\_Blue\_L2CAP\_Procedure\_Timeout ..... 20
    - 4.2.7 Evt\_Blue\_L2CAP\_Connection\_Update\_Request ..... 20
  - 4.3 GAP VS commands and events ..... 22
    - 4.3.1 Overview ..... 22
    - 4.3.2 GAP VS Commands ..... 23
    - 4.3.3 Aci\_Gap\_Set\_Non\_Discoverable ..... 24
    - 4.3.4 Aci\_Gap\_Set\_Limited\_Discoverable ..... 24
    - 4.3.5 Aci\_Gap\_Set\_Discoverable ..... 27
    - 4.3.6 Aci\_Gap\_Set\_Direct\_Connectable ..... 29
    - 4.3.7 Aci\_Gap\_Set\_IO\_Capability ..... 30
    - 4.3.8 Aci\_Gap\_Set\_Auth\_Requirement ..... 31

4.3.9	Aci_Gap_Set_Author_Requirement	32
4.3.10	Aci_Gap_Pass_Key_Response	33
4.3.11	Aci_Gap_Authorization_Response	33
4.3.12	Aci_Gap_Init	34
4.3.13	Aci_Gap_Set_Non_Connectable	35
4.3.14	Aci_Gap_Set_Undirected_Connectable	36
4.3.15	Aci_Gap_Slave_Security_Request	38
4.3.16	Aci_Gap_Update_Adv_Data	39
4.3.17	Aci_Gap_Delete_AD_Type	39
4.3.18	Aci_Gap_Get_Security_Level	40
4.3.19	Aci_Gap_Set_Event_Mask	42
4.3.20	Aci_Gap_Configure_WhiteList	43
4.3.21	Aci_Gap_Terminate	43
4.3.22	Aci_Gap_Clear_Security_Database	44
4.3.23	Aci_Gap_Allow_Rebond	45
4.3.24	Aci_Gap_Start_Limited_Discovery_Proc	45
4.3.25	Aci_Gap_Start_General_Discovery_Proc	47
4.3.26	Aci_Gap_Start_Name_Discovery_Proc	48
4.3.27	Aci_Gap_Start_Auto_Conn_Establishment	50
4.3.28	Aci_Gap_Start_General_Conn_Establishment	52
4.3.29	Aci_Gap_Start_Selective_Conn_Establishment	53
4.3.30	Aci_Gap_Create_Connection	55
4.3.31	Aci_Gap_Terminate_Gap_Procedure	57
4.3.32	Aci_Gap_Start_Connection_Update	58
4.3.33	Aci_Gap_Send_Pairing_Request	59
4.3.34	Aci_Gap_Resolve_Private_Address	60
4.3.35	Aci_Gap_Get_Bonded_Devices	61
4.3.36	Aci_Gap_Set_Broadcast_Mode	62
4.3.37	Aci_Gap_Start_Observation_Proc	64
4.3.38	Aci_Gap_Is_Device_Bonded	65
4.4	GAP VS Events	66
4.4.1	Evt_Blue_Gap_Limited_Discoverable	66
4.4.2	Evt_Blue_Gap_Pairing_Complete	66
4.4.3	Evt_Blue_Pass_Key_Request	66
4.4.4	Evt_Blue_Authorization_Request	68
4.4.5	Evt_Blue_Slave_Security_Initiated	68
4.4.6	Evt_Blue_Gap_Bond_Lost	68

4.4.7 Evt\_Blue\_Gap\_Procedure\_Complete ..... 68

4.4.8 Evt\_Blue\_Gap\_Addr\_Not\_Resolved ..... 69

4.5 GATT VS commands and events ..... 69

4.5.1 GATT VS commands ..... 69

4.5.2 Aci\_Gatt\_Init ..... 71

4.5.3 Aci\_Gatt\_Add\_Service ..... 71

4.5.4 Aci\_Gatt\_Include\_Service ..... 72

4.5.5 Aci\_Gatt\_Add\_Characteristic ..... 73

4.5.6 Aci\_Gatt\_Add\_Char\_Desc ..... 75

4.5.7 Aci\_Gatt\_Update\_Char\_Value ..... 77

4.5.8 Aci\_Gatt\_Del\_Characteristic ..... 78

4.5.9 Aci\_Gatt\_Del\_Service ..... 79

4.5.10 Aci\_Gatt\_Del\_Include\_Service ..... 80

4.5.11 Aci\_Gatt\_Set\_Event\_Mask ..... 80

4.5.12 Aci\_Gatt\_Exchange\_Configuration ..... 81

4.5.13 Aci\_Att\_Find\_Information\_Req ..... 82

4.5.14 Att\_Find\_By\_Type\_Value\_Req ..... 83

4.5.15 Aci\_Att\_Read\_Attr\_By\_Type\_Req ..... 84

4.5.16 Aci\_Att\_Read\_By\_Group\_Type\_Req ..... 85

4.5.17 Aci\_Att\_Prepare\_Write\_Req ..... 86

4.5.18 Aci\_Att\_Execute\_Write\_Req ..... 87

4.5.19 Aci\_Gatt\_Disc\_All\_Prim\_Services ..... 88

4.5.20 Aci\_Gatt\_Disc\_Prim\_serv\_By\_Uuid ..... 89

4.5.21 Aci\_Gatt\_Find\_Included\_Services ..... 90

4.5.22 Aci\_Gatt\_Disc\_All\_Charac\_Of\_Serv ..... 91

4.5.23 Aci\_Gatt\_Disc\_Charac\_By\_UUID ..... 92

4.5.24 Aci\_Gatt\_Disc\_All\_Charac\_Descriptors ..... 93

4.5.25 Aci\_Gatt\_Read\_Charac\_Val ..... 94

4.5.26 Aci\_Gatt\_Read\_Charac\_Using\_UUID ..... 95

4.5.27 Aci\_Gatt\_Read\_Long\_Charac\_Val ..... 96

4.5.28 Aci\_Gatt\_Read\_Multiple\_Charac\_Values ..... 97

4.5.29 Aci\_Gatt\_Write\_Charac\_Val ..... 98

4.5.30 Aci\_Gatt\_Write\_Long\_Charac\_Val ..... 99

4.5.31 Aci\_Gatt\_Write\_Charac\_Reliable ..... 100

4.5.32 Aci\_Gatt\_Write\_Long\_Charac\_Descriptor ..... 101

4.5.33 Aci\_Gatt\_Read\_Long\_Charac\_Descriptor ..... 102

4.5.34 Aci\_Gatt\_Write\_Charac\_Descriptor ..... 103

4.5.35	Aci_Gatt_Read_Charac_Descriptor	104
4.5.36	Aci_Gatt_Write_Without_Response	104
4.5.37	Aci_Gatt_Signed_Write_Without_Response	105
4.5.38	Aci_Gatt_Confirm_Indication	106
4.5.39	Aci_Gatt_Write_Resp	107
4.5.40	Aci_Gatt_Allow_Read	108
4.5.41	Aci_Gatt_Set_Security_Permission	109
4.5.42	Aci_Gatt_Set_Descriptor_Value	110
4.5.43	Aci_Gatt_Read_Handle_Value	111
4.5.44	Aci_Gatt_Read_Handle_Value_Offset	111
4.6	GATT VS events	113
4.6.1	Evt_Blue_Gatt_Attribute_modified	113
4.6.2	Evt_Blue_Gatt_Procedure_Timeout	114
4.6.3	Evt_Blue_Gatt_Procedure_Complete	114
4.6.4	Evt_Blue_Gatt_Disc_Read_Charac_By_UUID_Resp	114
4.6.5	Evt_Blue_Gatt_Write_Permit_req	115
4.6.6	Evt_Blue_Gatt_Read_Permit_Req	115
4.6.7	Evt_Blue_Gatt_Read_Multi_Permit_Req	116
4.6.8	Other GATT VS Events	116
4.7	HCI vendor specific commands	117
4.7.1	HCI VS commands	117
4.7.2	Hal_IO_Init	118
4.7.3	Hal_IO_Configure	118
4.7.4	Hal_IO_set_bit	119
4.7.5	Hal_IO_get_bit	119
4.7.6	Write_Config_Data	120
4.7.7	Read_Config_Data	121
4.7.8	Set_Tx_power_level	122
4.7.9	Device_Standby	123
4.7.10	Number_Of_Packet_Sent_in_DirectTX	124
4.7.11	Tone_Start	124
4.7.12	Tone_Stop	125
<b>5</b>	<b>SPI interface</b>	<b>126</b>
5.1	Hardware SPI interface	126
5.2	SPI communication protocol	128
5.2.1	Header	128

---

5.2.2	Write data to BlueNRG-MS .....	129
5.2.3	Read data from BlueNRG-MS .....	129
5.2.4	SPI operation with BlueNRG-MS sleep mode .....	130
<b>6</b>	<b>Revision history .....</b>	<b>131</b>

# 1 Overview

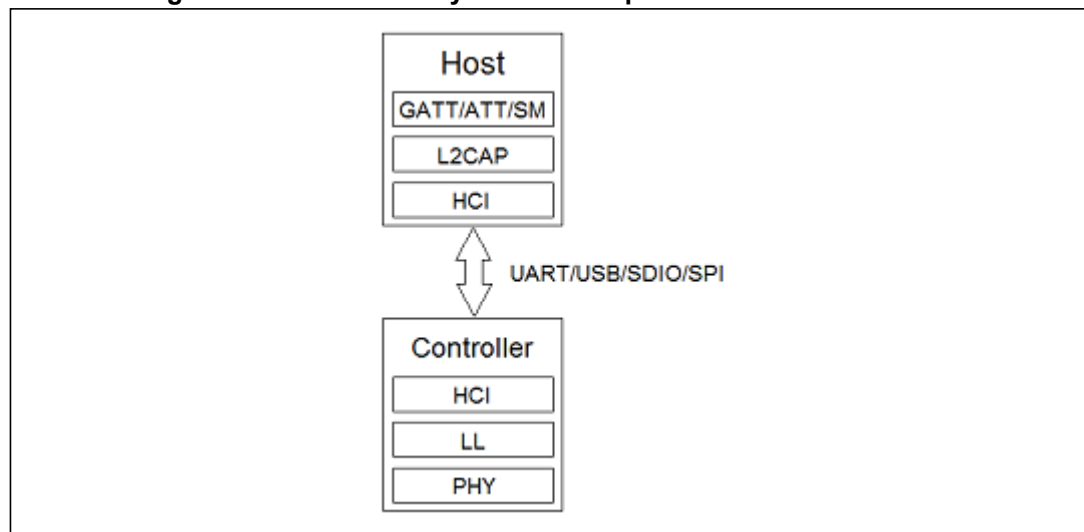
Bluetooth LE technology was adopted by the Bluetooth SIG starting from the Bluetooth core specification v4.1. Bluetooth LE technology was designed to enable products that require lower power consumption, lower complexity and lower cost compared to the Bluetooth classic or Bluetooth high-speed systems.

A typical BLE system consists of an LE controller and a host. The LE controller consists of a physical layer (PHY) including the radio, a link layer (LL) and a standard host controller interface (HCI). The host consists of a HCI and other higher protocol layers, e.g. L2CAP, SM, ATT/GATT, GAP etc.

In many designs the LE controller and the host reside in two separate silicon chips and are controlled by 2 different microcontrollers. Communication between the two is transmitted via a hardware connection, e.g. UART, SPI, USB, etc. The host can send HCI commands to control the LE controller. The HCI interface and the HCI commands are standardized by the Bluetooth core specification. Please refer to the official document for more information.

The HCI interface provides a significant benefit. Any Bluetooth tester can easily connect to the controller via the hardware connection, e.g. SPI, to test the controller by sending HCI commands. This removes the need to involve the host if the only interest is to test the controller.

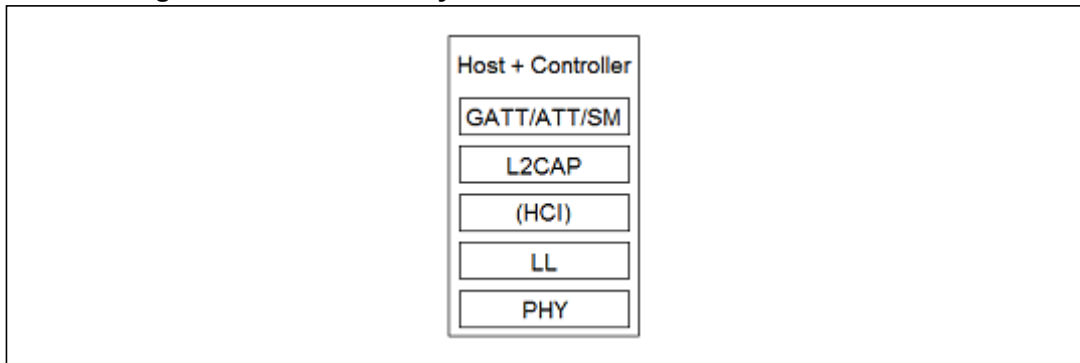
**Figure 1. Bluetooth LE system with separate host and controller**



Sometimes the LE controller and the host can be combined into a single chipset solution. This lowers the cost of hardware, first because it reduces the number of silicon chips to one rather than two, and second because the hardware connection between the host and the controller is no longer required.

Under this scenario, the host may directly control the LL/PHY. In this way, there is no need to generate the standard HCI commands, transmit the commands to the LL, and then process them. As a result, the execution time is improved and the calculation load on the CPU is reduced. However, if the HCI is removed completely, it will be more difficult to test only the controller with an external Bluetooth tester.

Figure 2. Bluetooth LE system with combined host and controller



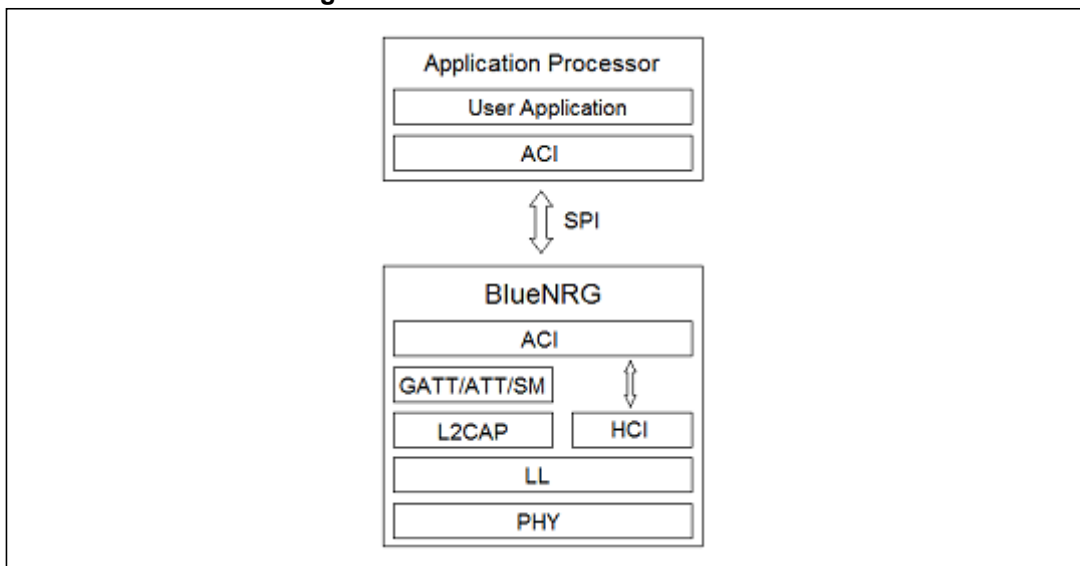
### 1.1 BlueNRG-MS ACI architecture

The BlueNRG-MS is implemented using a combined host and controller solution. An application command interface (ACI) is provided for accessing the BlueNRG-MS host and controller.

User applications, i.e. programs running in another silicon chip, can send ACI commands to control the BlueNRG-MS. The ACI commands should be sent over an SPI connection. The SPI protocol is described in a later section.

The ACI interface also supports HCI commands. If a command is received the ACI will check whether the command is for the host or for the controller. If the command is a HCI command, i.e. a command for the controller, the ACI will forward directly the command to the controller, bypassing it from the host. This implementation has two advantages: (1) normally the host can control the LL/PHY without using the HCI commands, which improves performance, and (2) user applications can still test the controller individually or set up some low-level hardware parameters with the HCI commands, without going through the host.

Figure 3. BlueNRG-MS ACI architecture



## 2 ACI command data format

When sending an ACI command to the BlueNRG-MS, the command must be formatted as described in this chapter.

### 2.1 Overview

The BlueNRG-MS ACI commands utilize and extend the standard HCI data format. The standard HCI data format is a part of the Bluetooth core specification. To avoid redundancy and inconsistency, the texts are not copied into this document. Please refer to the official Bluetooth specification, Volume 2, Part E, Chapter 5 for detailed information.

According to the Bluetooth specification, a standard HCI packet can be an:

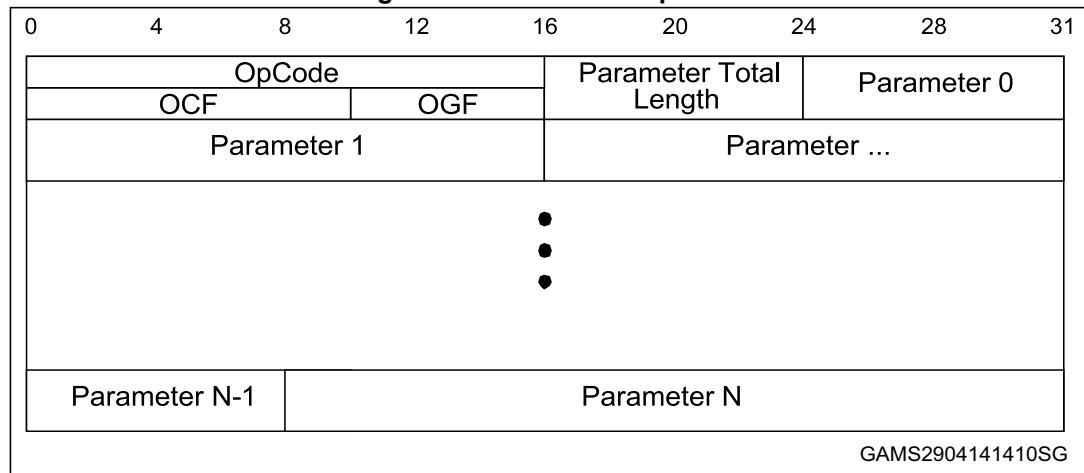
1. HCI command packet
2. HCI ACL data packet
3. HCI synchronous data packet
4. HCI event packet

In the BlueNRG-MS, the HCI synchronous data packet is not supported, but the other three are.

### 2.2 HCI command packet

When an external device gives a command to the BlueNRG-MS, the command must be formatted in a HCI command packet. The BlueNRG-MS only receives the HCI command packets, but does not transmit.

**Figure 4. HCI command packet**



Each HCI command uses a 2 byte OpCode to uniquely identify different types of commands. The OpCode is divided into two fields: the OpCode Group Field (OGF) and the OpCode Command Field (OCF). The OGF is the upper 6 bits and the remaining lower 10 bits are used by the OCF.

All HCI commands are grouped into logical groups by the Bluetooth specification and each group is assigned a unique OGF value.

**Table 1. OGF value**

Group Name	OGF Value
Link Control Commands	0x01
Link Policy Commands	0x02
Controller and Baseband Commands	0x03
Information Parameters	0x04
Status Parameters	0x05
Testing Commands	0x06
LE Controller Commands	0x08
Vendor Specific Commands	0x3F

Depending on the OGF, the commands can be categorized into 3 sets:

1. Standard HCI commands: the commands with an OGF value other than 0x3F. These commands are designed for the controller. All standard HCI command are clearly defined in the Bluetooth specification, so they are not described in this document.
2. Vendor specific (VS) HCI commands: the commands with an OGF value 0x3F and are designed for the controller. Each vendor can define their own VS commands based on the hardware implementation. The VS commands defined for the BlueNRG-MS are described in this document.
3. Vendor specific (VS) ACI commands: the commands also with an OGF value 0x3F, but these commands are designed to control/access the host. The Bluetooth specification does not define any command for the host, so all the ACI commands are naturally vendor specific. The ACI commands for the BlueNRG-MS are described in this document.

To clarify, the commands designed to control the controller are called HCI commands. This name is defined by the Bluetooth specification and we maintain it here in order to comply with the specification. The commands designed to control the host are called ACI commands. We give it a different name to indicate that this command is rather assigned to the host, i.e. to the whole BLE system, and not only to the controller at the lower level.

However, because both ACI and HCI commands are the commands received from the external device via the ACI interface, and both of them share the same data format, sometimes it is not very important to differentiate between the two. So in this document, when referring in general to commands, we use the term “ACI commands”.

In practice, the value of the OpCode is more important. Each command, regardless of whether it is an HCI or an ACI command, matches only one OpCode value. The user application should guarantee the OpCode value is used correctly.

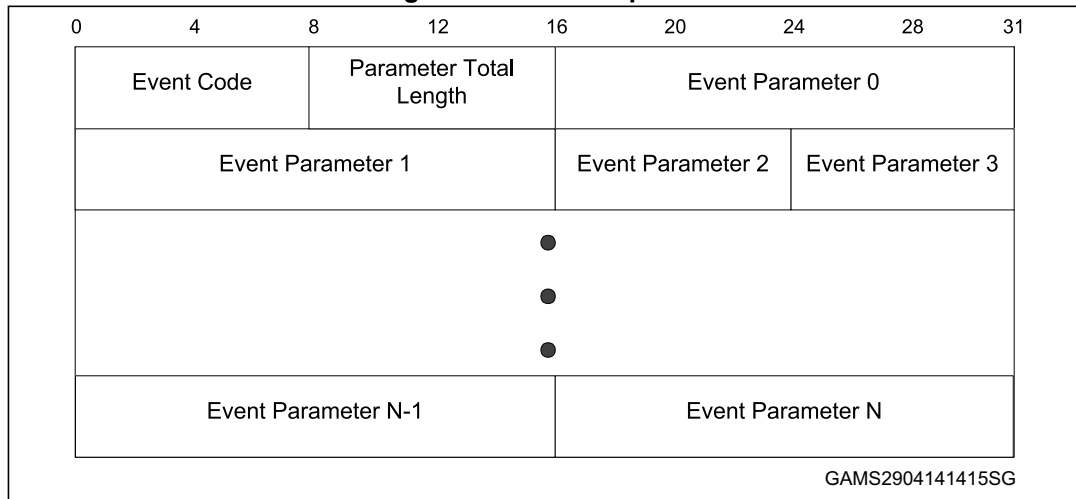
Please note that the Bluetooth specification uses bit-wise little endian format for the OpCode. So in [Figure 4](#), the OGF field is placed to the right. But in this document, when writing an OpCode in the format of 0xFFFF, we imply the most significant bit to the left. For example, if an OpCode is 0xFE81, its top 6-bit OGF is “111111”, i.e. 0x3F, so it is a vendor specific command. And its OCF is 10-bit 0x281. For another example, if an OpCode is

0x0406, the 6-bit OGF is 0x01, and its OCF is 0x06. So this is a standard HCI command, HCI\_Disconnect.

### 2.3 HCI event packet

The BlueNRG-MS uses event packets to acknowledge a command or to notify that its status has updated to the user application. The BlueNRG-MS only sends HCI event packets, but does not receive them.

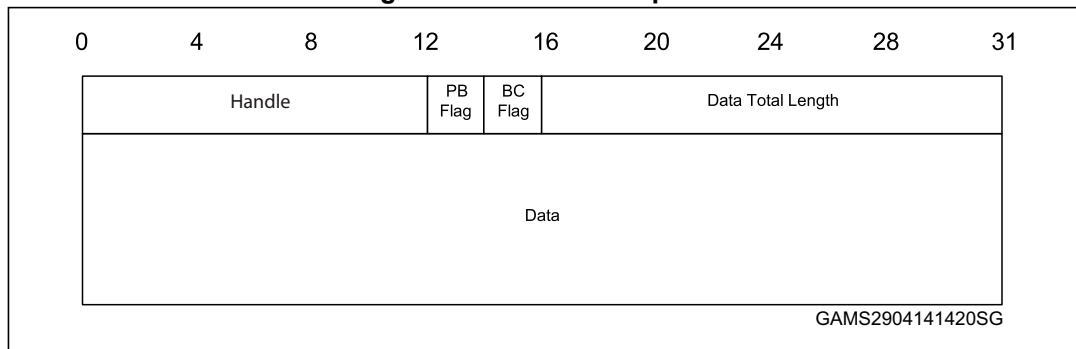
Figure 5. HCI event packet



### 2.4 HCI ACL data packet

The ACL data packets are used to exchange data.

Figure 6. HCI ACL data packet



## 3 Standard HCI commands

### 3.1 Supported HCI commands

The table below lists the standard Bluetooth HCI commands which are supported by the BlueNRG-MS. For the details of each command, e.g. command descriptions, parameters, etc. please refer to the Bluetooth core specification, Volume 2, Part E, Chapter 7.

**Table 2. HCI commands**

Item	Command	OGF	OCF	OpCode
1	HCI_Disconnect	0x01	0x06	0x0406
2	HCI_Read_Remote_Version_Information	0x01	0x1D	0x041D
3	HCI_Set_Event_Mask	0x03	0x01	0x0C01
4	HCI_Reset	0x03	0x03	0x0C03
5	HCI_Read_Transmit_Power_Level	0x03	0x2D	0x0C2D
6	HCI_Read_Local_Version_Information	0x04	0x01	0x1001
7	HCI_Read_Local_Supported_Commands	0x04	0x02	0x1002
8	HCI_Read_Local_Supported_Features	0x04	0x03	0x1003
9	HCI_Read_BD_ADDR	0x04	0x09	0x1009
10	HCI_Read_RSSI	0x05	0x05	0x1405
11	HCI_LE_Set_Event_Mask	0x08	0x01	0x2001
12	HCI_LE_Read_Buffer_Size	0x08	0x02	0x2002
13	HCI_LE_Read_Local_Supported_Feature	0x08	0x03	0x2003
14	HCI_LE_Set_Random_Address	0x08	0x05	0x2005
15	HCI_LE_Set_Advertizing_Parameters	0x08	0x06	0x2006
16	HCI_LE_Read_Advertizing_Channel_Tx_Power	0x08	0x07	0x2007
17	HCI_LE_Set_Advertizing_Data	0x08	0x08	0x2008
18	HCI_LE_Set_Scan_Response	0x08	0x09	0x2009
19	HCI_LE_Set_Advertize_Enable	0x08	0x0A	0x200A
20	HCI_LE_Set_Scan_Parameters	0x08	0x0B	0x200B
21	HCI_LE_Set_Scan_Enable	0x08	0x0C	0x200C
22	HCI_LE_Create_Connection	0x08	0x0D	0x200D
23	HCI_LE_Create_Connection_Cancel	0x08	0x0E	0x200E
24	HCI_LE_Read_White_List_Size	0x08	0x0F	0x200F
25	HCI_LE_Clear_While_List	0x08	0x10	0x2010
26	HCI_LE_Add_Device_To_While_List	0x08	0x11	0x2011
27	HCI_LE_Remove_Device_From_While_List	0x08	0x12	0x2012
28	HCI_LE_Connection_Update	0x08	0x13	0x2013

Table 2. HCI commands (continued)

Item	Command	OGF	OCF	OpCode
29	HCI_LE_Set_Host_Channel_Classification	0x08	0x14	0x2014
30	HCI_LE_Read_Channel_Map	0x08	0x15	0x2015
31	HCI_LE_Read_Remote_Used_Features	0x08	0x16	0x2016
32	HCI_LE_Encrypt	0x08	0x17	0x2017
33	HCI_LE_Rand	0x08	0x18	0x2018
34	HCI_LE_Start_Encryption	0x08	0x19	0x2019
35	HCI_LE_Long_Term_Key_Request_Reply	0x08	0x1A	0x201A
36	HCI_LE_Long_Term_Key_Requested_Negative_Reply	0x08	0x1B	0x201B
37	HCI_LE_Read_Supported_States	0x08	0x1C	0x201C
38	HCI_LE_Receiver_Test	0x08	0x1D	0x201D
39	HCI_LE_Transmitter_Test	0x08	0x1E	0x201E
40	HCI_LE_Test_End	0x08	0x1F	0x201F

### 3.2 Supported HCI events

The table below lists the HCI events supported by the BlueNRG-MS.

Table 3. HCI events

Item	Event	Event code	Sub event code
1	Disconnect_Complete	0x05	-
2	Encryption_Change_Event	0x08	-
3	Read_Remote_Version_Information_Complete	0x0C	-
4	Command_Complete_Event	0x0E	-
5	Command_Status_Event	0x0F	-
6	Hardware_Error_Event	0x10	-
7	Number_Of_Completed_Packets	0x13	-
8	Encryption_Key_Refresh_Complete	0x30	-
9	LE_Connection_Complete	0x3E	0x01
10	LE_Advertising_Report	0x3E	0x02
11	LE_Connection_Update_Complete	0x3E	0x03
12	LE_Read_Remote_Used_Features_Complete	0x3E	0x04
13	LE_Long_Term_Key_Request_Event	0x3E	0x05

### 3.3 Correct use of HCI commands

The use HCI commands for advertising needs to follow a particular sequence to ensure correct outcome.

The sequence is in case of starting advertising.

When using the commands at HCI level, the correct sequence has to be followed as below:

1. HCI\_LE\_Set\_Advertising\_Parameters - Used to set the advertising parameters.
2. HCI\_LE\_Set\_Advertising\_Data - Used to set the data used in advertising packets that have a data field.
3. HCI\_LE\_Set\_Scan\_Response - Used to set the data used in scanning packets that have a data field.
4. HCI\_LE\_Set\_Advertise\_Enable - Turn on Advertising.

## 4 Vendor specific commands

The VS commands can be either ACI VS commands to access the host of the BlueNRG-MS, or the HCI VS commands to access the LE controller. Both types of the commands use the OGF value of 0x3F.

### 4.1 VS command and VS event format

The OCF field of the OpCode of the VS commands is further divided into two fields: Command Group ID and Command ID.

**Figure 7. OpCode format for VS Commands**

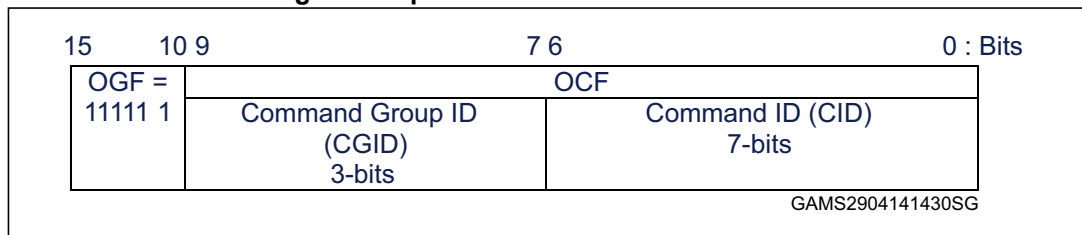


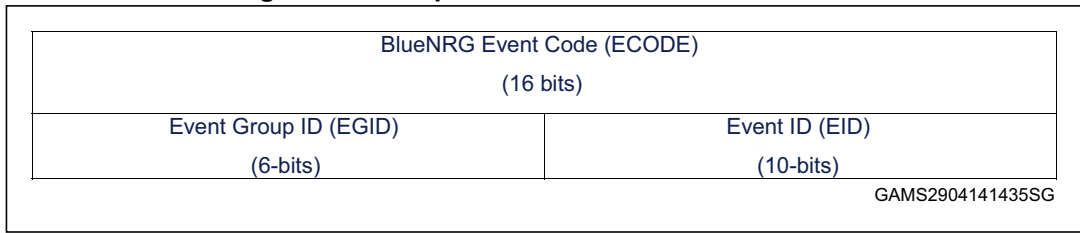
Figure 7 above gives the 16-bit OpCode format (see also Section 2.2). The OGF field is always 0x3F for VS commands. The 10-bit OCF field is split into two parts: 3-bit Command Group ID (CGID) and 7-bit Command ID (CID). The CGID is used by the BlueNRG-MS ACI interface to route the commands to different logical layers, e.g. L2CAP, GAP, GATT, etc. It also helps to categorize the VS commands with a more clear structure. The CID determines the ID of each command. Each CGID group can have up to 128 VS commands.

**Table 4. CGID group**

Command group	Description	CGID
HCI	HCI extension commands	0x0
GAP	Generic access profile commands	0x1
GATT	Generic attribute profile commands	0x2
L2CAP	L2CAP commands	0x3
Reserved		0x4 – 0x7

The VS event also has a slightly different format than the standard HCI event (see also Section 2.3). (1) The 8-bit event code of the VS event always has the value of 0xFF. (2) The 16-bit event parameter 0 has a different format.

**Figure 8. Event parameter 0 format for VS events**



The event parameter 0 is the first return parameter in the HCI event packets, following the Parameter Length field. These 2 bytes together are defined as the BlueNRG-MS Event Code (ECODE). ECODE is further divided into 2 fields: Event Group ID (EGID) and Event ID (EID). BlueNRG-MS combines the events into logical groups using the EGID. And the EID is used to specify an event in the group. The EGID occupies 6-bits in the ECODE field while the EID occupies the remaining 10 bits.

**Table 5. EGID group**

Event Group	Description	EGID
HCI	HCI extension events	0x0
GAP	Generic access profile commands	0x1
L2CAP	L2CAP events	0x2
GATT	Generic attribute profile events	0x3

## 4.2 L2CAP VS commands and events

### 4.2.1 L2CAP VS commands

Table 6. L2CAP VS Commands

Item	Command	CGID	CID	OpCode
1	Connection Parameter Update Request	0x03	0x01	0xFD81
2	Connection Parameter Update Response	0x03	0x02	0xFD82

### 4.2.2 Aci\_L2CAP\_Connection\_Parameter\_Update\_Request

Table 7. Aci\_L2CAP\_Connection\_Parameter\_Update\_Request

Command name	Parameters	Return
Aci_L2CAP_Connection_Parameter_Update_Request (0xFD81)	Connection handle Interval min Interval max Slave latency Timeout multiplier	Status

Description:

Send an L2CAP connection parameter update request from the slave to the master.

Table 8. Aci\_L2CAP\_Connection\_Parameter\_Update\_Requests command parameters

Parameter	Size	Description
Connection handle	2 bytes	Connection handle of the link which the connection parameter update request has to be sent
Interval min	2 bytes	Defines minimum value for the connection event interval in the following manner: $connIntervalMin = Interval\ Min * 1.25\ ms$
Interval max	2 bytes	Defines maximum value for the connection event interval in the following manner: $connIntervalMax = Interval\ Max * 1.25\ ms$
Slave latency	2 bytes	Defines the slave latency parameter (as number of LL connection events)
Timeout multiplier	2 bytes	Defines connection timeout parameter in the following manner: $Timeout\ Multiplier * 10\ ms$

**Table 9. Aci\_L2CAP\_Connection\_Parameter\_Update\_Requests return parameters**

Parameter	Size	Description
Status	1 byte	0x0: connection parameter accepted 0x1: connection parameter rejected

Event(s) generated:

A command status event on the receipt of the command and a Evt\_Blue\_L2CAP\_Conn\_Upd\_Resp event when the master responds to the request (accepts or rejects).

### 4.2.3 Aci\_L2CAP\_Connection\_Parameter\_Update\_Response

**Table 10. Aci\_L2CAP\_Connection\_Parameter\_Update\_Response**

Command name	Parameters	Return
Aci_L2CAP_Connection_Parameter_Update_Response (0xFD82)	Conn_Handle Conn_Interval_Min Conn_Interval_Max Conn_Latency Timeout Multiplier Min CE length Max CE length Identifier Accept	Status

Description:

This command should be sent in response to the Evt\_Blue\_L2CAP\_Connection\_Update\_Req event from the controller. The accept parameter has to be set to 1 if the connection parameters given in the event are acceptable.

**Table 11. Aci\_L2CAP\_Connection\_Parameter\_Update\_Response command parameters**

Parameter	Size	Description
Conn_Handle	2 bytes	Handle received in Evt_Blue_L2CAP_Connection_Update_Req event.
Min connection Interval	2 bytes	The connection interval parameter as received in the l2cap connection update request event
Max connection Interval	2 bytes	The maximum connection interval parameter as received in the l2cap connection update request event.
latency	2 bytes	The slave latency parameter as received in the l2cap connection update request event.
Timeout Multiplier	2 bytes	The supervision connection timeout parameter as received in the l2cap connection update request event.

**Table 11. Aci\_L2CAP\_Connection\_Parameter\_Update\_Response command parameters (continued)**

Parameter	Size	Description
Min CE length	2 bytes	Minimum length of connection event needed for the LE connection. Range: 0x0000 – 0xFFFF Time = N * 0.625 msec.
Max CE length	2 bytes	Maximum length of connection event needed for the LE connection. Range: 0x0000 – 0xFFFF Time = N * 0.625 msec.
Identifier	1 bytes	Identifier received in Evt_Blue_L2CAP_Connection_Update_Req event.
Accept	1 bytes	0x00: The connection update parameters are not acceptable. 0x01: The connection update parameters are acceptable.

**Table 12. Aci\_L2CAP\_Connection\_Parameter\_Update\_Response return parameters**

Parameter	Size	Description
Status	1 byte	0x00: BLE_STATUS_SUCCESS 0x12: BLE_STATUS_INVALID_PARAMETER 0x0C: ERR_COMMAND_DISALLOWED

Event(s) generated:

A command complete event is generated. If the status is success, then the link parameters are updated with the new set values as received in the connection update complete event.

#### 4.2.4 L2CAP VS events

**Table 13. L2CAP VS events**

Item	Event	EGID	EID	ECODE
1	Evt_Blue_L2CAP_Connection_Update_Resp	0x02	0x00	0x0800
2	Evt_Blue_L2CAP_Procedure_Timeout	0x02	0x01	0x0801
3	Evt_Blue_L2CAP_Connection_Update_Request	0x02	0x02	0x0802

#### 4.2.5 Evt\_Blue\_L2CAP\_Connection\_Update\_Resp

This event is generated when the master responds to the connection update request packet with a connection update response packet or a command reject packet.

**Table 14. Evt\_Blue\_L2CAP\_Connection\_Update\_Resp**

Parameter	Size	Description
Event code	2 bytes	The event code for connection update response event
Connection handle	2 bytes	Connection handle for which the command is given
Datalen	1 byte	Length of the data to follow
Data	Datalen bytes	Contains: (data is in the form described in Bluetooth Core v4.1 vol 3, Part A, ch. 4.1 and ch. 4.21) 1. command reject packet if the request was rejected by the master or 2. connection update response packet

#### 4.2.6 Evt\_Blue\_L2CAP\_Procedure\_Timeout

This event is generated when the master does not respond to the connection update request packet with a connection update response packet or a command reject packet within 30 seconds.

**Table 15. Evt\_Blue\_L2CAP\_Procedure\_Timeout**

Parameter	Size	Description
Event code	2 bytes	The event code for L2CAP procedure timeout event
Datalen	1 byte	Length of the data to follow
Data	Datalen bytes	Status (0x0000: Success)

#### 4.2.7 Evt\_Blue\_L2CAP\_Connection\_Update\_Request

The event is given by the L2CAP layer when a connection update request is received from the slave. The upper layer which receives this event has to respond by sending a Aci\_L2CAP\_Connection\_Update\_Resp command to the BlueNRG-MS.

**Table 16. Evt\_Blue\_L2CAP\_Connection\_Update\_Request**

Parameter	Size	Description
Event code	2 bytes	The event code for connection update request event.
Conn_Handle	2 bytes	Handle of the connection for which the connection update request has been received. The same handle has to be returned while responding to the event with the command Aci_L2CAP_Connection_Update_Resp.
DataLen	1 byte	Length of the data to follow. The data will be the L2CAP connection update request received.
Identifier	1 byte	This is the identifier which associates the request to the response. The same identifier has to be returned by the upper layer in the command Aci_L2CAP_Connection_Update_Resp.
Length	2 bytes	Length of the L2CAP connection update request

Table 16. Evt\_Blue\_L2CAP\_Connection\_Update\_Request (continued)

Parameter	Size	Description
Interval_Min	2 bytes	Value as defined in Bluetooth 4.1 spec, Volume 3, Part A 4.20
Interval_Max	2 bytes	Value as defined in Bluetooth 4.1 spec, Volume 3, Part A 4.20
Slave_Latency	2 bytes	Value as defined in Bluetooth 4.1 spec, Volume 3, Part A 4.20
Timeout_Multiplier	2 bytes	Value as defined in Bluetooth 4.1 spec, Volume 3, Part A 4.20

## 4.3 GAP VS commands and events

### 4.3.1 Overview

There are 4 GAP roles defined for LE devices:

- **Broadcaster:** Broadcaster is a device that sends advertising events. Broadcaster shall have a transmitter and can optionally have a receiver.
- **Observer:** In observer role device receives the advertising events. An observer shall have a receiver and can optionally have a transmitter.
- **Peripheral:** Any device that accepts the establishment of LE physical link is referred as peripheral. A device operating in peripheral role will be slave in LL connection state. A peripheral shall have both a transmitter and receiver.
- **Central:** A device that initiates the establishment of LE physical link is referred as central device. A device operating in central role will be master in LL connection state. A central shall have both a transmitter and receiver.

BlueNRG-MS is capable of being the peripheral or central in the GAP profile context because:

- BlueNRG-MS controller is capable of acting as a slave in a connection, i.e. it can accept the LL connection request from a central device and can support all the mandatory requirements of the GAP peripheral role as dictated in Table 2.1, Part C, Generic Access Profile of Bluetooth core specification 4.1.
- BlueNRG-MS controller is capable of acting as a master in a connection, i.e. it can issue the LL connect request to a peripheral device and can support all the mandatory requirements of the GAP central role as dictated in Table 2.1, Part C, Generic Access Profile of Bluetooth core specification 4.1.

## 4.3.2 GAP VS Commands

Table 17. GAP VS commands

Item	Command	CGID	CID	OpCode
1	Aci_Gap_Set_Non_Discoverable	0x01	0x01	0xFC81
2	Aci_Gap_Set_Limited_Discoverable	0x01	0x02	0xFC82
3	Aci_Gap_Set_Discoverable	0x01	0x03	0xFC83
4	Aci_Gap_Set_Direct_Connectable	0x01	0x04	0xFC84
5	Aci_Gap_Set_IO_Capability	0x01	0x05	0xFC85
6	Aci_Gap_Set_Auth_Requirement	0x01	0x06	0xFC86
7	Aci_Gap_Set_Author_Requirement	0x01	0x07	0xFC87
8	Aci_Gap_Pass_Key_Response	0x01	0x08	0xFC88
9	Aci_Gap_Authorization_Response	0x01	0x09	0xFC89
10	Aci_Gap_Init	0x01	0x0A	0xFC8A
11	Aci_Gap_Set_Non_Connectable	0x01	0x0B	0xFC8B
12	Aci_Gap_Set_Undirected_Connectable	0x01	0x0C	0xFC8C
13	Aci_Gap_Slave_Security_request	0x01	0x0D	0xFC8D
14	Aci_Gap_Update_Adv_Data	0x01	0x0E	0xFC8E
15	Aci_Gap_Delete_AD_Type	0x01	0x0F	0xFC8F
16	Aci_Gap_Get_Security_Level	0x01	0x10	0xFC90
17	Aci_Gap_Set_Event_Mask	0x01	0x11	0xFC91
18	Aci_Gap_Configure_WhiteList	0x01	0x12	0xFC92
19	Aci_Gap_Terminate	0x01	0x13	0xFC93
20	Aci_Gap_Clear_Security_Database	0x01	0x14	0xFC94
21	Aci_Gap_Allow_Rebond	0x01	0x15	0xFC95
22	Aci_Gap_Start_Limited_Discovery_Proc	0x01	0x16	0xFC96
23	Aci_Gap_Start_General_Discovery_Proc	0x01	0x17	0xFC97
24	Aci_Gap_Start_Name_Discovery_Proc	0x01	0x18	0xFC98
25	Aci_Gap_Start_Auto_Conn_Establishment	0x01	0x19	0xFC99
26	Aci_Gap_Start_General_Conn_Establishment	0x01	0x1A	0xFC9A
27	Aci_Gap_Start_Selective_Conn_Establishment	0x01	0x1B	0xFC9B
28	Aci_Gap_Create_Connection	0x01	0x1C	0xFC9C
29	Aci_Gap_Terminate_Gap_Procedure	0x01	0x1D	0xFC9D
30	Aci_Gap_Start_Connection_Update	0x01	0x1E	0xFC9E
31	Aci_Gap_Send_Pairing_Request	0x01	0x1F	0xFC9F
32	Aci_Gap_Resolve_Private_Address	0x01	0x20	0xFCA0
33	Aci_Gap_Get_Bonded_Devices	0x01	0x23	0xFCA3

**Table 17. GAP VS commands (continued)**

Item	Command	CGID	CID	OpCode
34	Aci_Gap_Set_Broadcast_Mode	0x01	0x21	0xFCA1
35	Aci_Gap_Start_Observation_Proc	0x01	0x22	0xFCA2
36	Aci_Gap_Is_Device_Bonded	0x01	0x24	0xFCA4

**4.3.3 Aci\_Gap\_Set\_Non\_Discoverable**

**Table 18. Aci\_gap\_set\_non\_discoverable**

Command name	Parameters	Return
Aci_Gap_Set_Non_Discoverable (0xFC81)		Status

Description:

Set the device in non-discoverable mode. This command will disable the LL advertising and put the device in standby state.

**Table 19. Aci\_gap\_set\_non\_discoverable return parameters**

Parameter	Size	Description
Status	1 byte	0x0: Status success 0xC: Command Disallowed

Event(s) generated:

When the Aci\_Gap\_Set\_Non\_Discoverable command has completed, the controller will generate a command complete event.

**4.3.4 Aci\_Gap\_Set\_Limited\_Discoverable**

**Table 20. Aci\_gap\_set\_limited\_discoverable**

Command name	Parameters	Return
Aci_Gap_Set_Limited_Discoverable (0xFC82)	Advertising_Event_Type Adv_Interval_Min Adv_Interval_Max Address_Type Adv_Filter_Policy Local_Name_Length Local_Name Service_Uuid_Length Service_Uuid_List Slave_Conn_Interval_Min Slave_Conn_Interval_Max	Status

## Description:

Set the device in limited discoverable mode (as defined in GAP specification volume 3, section 9.2.3). The device will be discoverable for maximum period of TGAP (lim\_adv\_timeout) = 180 seconds (from errata). The advertising can be disabled at any time by issuing Aci\_Gap\_Set\_Non\_Discoverable command.

The Adv\_Interval\_Min and Adv\_Interval\_Max parameters are optional. If both are set to 0, the GAP will use default values for adv intervals for limited discoverable mode.

To allow a fast connection, the host can set Local\_Name, Service\_Uuid\_List, Slave\_Conn\_Interval\_Min and Slave\_Conn\_Interval\_Max. These parameters are optional in this command. These values can be set in advertised data using GAP\_Update\_Adv\_Data command separately.

**Table 21. Aci\_gap\_set\_limited\_discoverable command parameters**

Parameter	Size	Description
Advertising_Event_Type	1 byte	0x00: Connectable undirected advertising (default) 0x02: Scannable undirected advertising 0x03: Non connectable undirected advertising
Adv_Interval_Min	2 bytes	Minimum advertising interval for non-directed advertising. Range: 0x0020 to 0x4000 Default: N = 0x0800 (1.28 second) Time = N * 0.625 msec Time Range: 20 ms to 10.24 sec
Adv_Interval_Max	2 bytes	Maximum advertising interval for non-directed advertising. Range: 0x0020 to 0x4000 Default: N = 0x0800 (1.28 seconds) Time = N * 0.625 msec Time Range: 20 ms to 10.24 sec
Address_Type	1 byte	0x00: Public device address (default) 0x01: Random device address
Adv_Filter_Policy	1 byte	0x00: Allow scan request from any, allow connect request from any (default). 0x01: Allow scan request from white list only, allow connect request from Any. 0x02: Allow scan request from any, allow connect request from white list only. 0x03: Allow scan request from white list only, allow connect request from white list only.
Local_Name_Length	1 byte	Length of the local name string in octets. If length is set to 0x00, Local_Name parameter should not be used.
Local_Name	0-N bytes	Local name of the device. This is an ASCII string without NULL character. First byte is the AD type: AD_TYPE_SHORTENED_LOCAL_NAME or AD_TYPE_COMPLETE_LOCAL_NAME.
Service_UUID_Length	1 byte	Length of the service UUID list in octets. If there is no service to be advertised, set this field to 0x00.

**Table 21. Aci\_gap\_set\_limited\_discoverable command parameters (continued)**

Parameter	Size	Description
Service_UUID_List	0-N bytes	This is the list of the UUID's AD types as defined in Volume 3, Section 11.1.1 of GAP Specification
Slave_Conn_Interval_Min	2 bytes	Slave connection internal minimum value. Connection interval is defined in the following manner: connIntervalmin = Slave_Conn_Interval_Min * 1.25 ms Slave_Conn_Interval_Min range: 0x0006 to 0x0C80 Value of 0xFFFF indicates no specific minimum.
Slave_Conn_Interval_Max	2 bytes	Slave connection internal maximum value. ConnIntervalmax = Slave_Conn_Interval_Max * 1.25 ms Slave_Conn_Interval_Max range: 0x0006 to 0x0C80 Slave_Conn_Interval_Max shall be equal to or greater than the Slave_Conn_Interval_Min. Value of 0xFFFF indicates no specific maximum.

**Table 22. Aci\_gap\_set\_limited\_discoverable return parameters**

Parameter	Size	Description
Status	1 byte	0x00: Success 0x42: Invalid parameter 0x0C: Command disallowed 0x11: Unsupported feature

Event(s) generated:

When the controller receives the command, it will generate a command status event with return parameter. Controller starts the advertising after this and when advertising timeout happens (i.e. limited discovery period has elapsed), controller generates Evt\_Blue\_Gap\_Limited\_Discoverable\_Complete event.

### 4.3.5 Aci\_Gap\_Set\_Discoverable

**Table 23. Aci\_gap\_set\_discoverable**

Command name	Parameters	Return
Aci_Gap_Set_Discoverable (0xFC83)	Advertising_Event_Type Adv_Interval_Min Adv_Interval_Max Address_Type Adv_Filter_Policy Local_Name_Length Local_Name Service_Uuid_Length Service_Uuid_List Slave_Conn_Interval_Min Slave_Conn_Interval_Max	Status

Description:

Set the device in general discoverable mode (as defined in GAP specification volume 3, section 9.2.4). The device will be discoverable until the host issues the Aci\_Gap\_Set\_Non\_Discoverable command. The Adv\_Interval\_Min and Adv\_Interval\_Max parameters are optional. If both are set to 0, the GAP uses the default values for adv intervals for general discoverable mode.

**Table 24. Aci\_gap\_set\_discoverable command parameters**

Parameter	Size	Description
Advertising_Event_Type	1 byte	0x00: Connectable undirected advertising (default) 0x02: Scannable undirected advertising 0x03: Non connectable undirected advertising
Adv_Interval_Min	2 bytes	Minimum advertising interval for non-directed advertising. Range: 0x0020 to 0x4000 Default: N = 0x0800 (1.28 second) Time = N * 0.625 msec Time Range: 20 ms to 10.24 sec
Adv_Interval_Max	2 bytes	Maximum advertising interval for non-directed advertising. Range: 0x0020 to 0x4000 Default: N = 0x0800 (1.28 seconds) Time = N * 0.625 msec Time Range: 20 ms to 10.24 sec
Address_Type	1 byte	0x00: Public device address (default) 0x01: Random device address

**Table 24. Aci\_gap\_set\_discoverable command parameters (continued)**

Parameter	Size	Description
Adv_Filter_Policy	1 byte	0x00: Allow scan request from any, allow connect request from any (default). 0x01: Allow scan request from white list only, allow connect request from any. 0x02: Allow scan request from any, allow connect request from white list only. 0x03: Allow scan request from white list only, allow connect request from white list only.
Local_Name_Length	1 byte	Length of the local name string in octets. If length is set to 0x00, Local_Name parameter should not be used.
Local_Name	0-N bytes	Local name of the device. This is an ASCII string without NULL character. First byte is the AD type: AD_TYPE_SHORTENED_LOCAL_NAME or AD_TYPE_COMPLETE_LOCAL_NAME.
Service_UUID_Length	1 byte	Length of the service UUID list in octets. If there is no service to be advertised, set this field to 0x00.
Service_UUID_List	0-N bytes	This is the list of the UUIDs AD types as defined in Volume 3, Section 11.1.1 of GAP Specification
Slave_Conn_Interval_Min	2 bytes	Slave connection internal minimum value. Connection interval is defined in the following manner: $connIntervalmin = Slave\_Conn\_Interval\_Min * 1.25ms$ Slave_Conn_Interval_Min range: 0x0006 to 0x0C80 Value of 0xFFFF indicates no specific minimum.
Slave_Conn_Interval_Max	2 bytes	Slave connection internal maximum value. $ConnIntervalmax = Slave\_Conn\_Interval\_Max * 1.25ms$ Slave_Conn_Interval_Max range: 0x0006 to 0x0C80 Slave_Conn_Interval_Max shall be equal to or greater than the Slave_Conn_Interval_Min. Value of 0xFFFF indicates no specific maximum.

**Table 25. Aci\_gap\_set\_discoverable return parameters**

Parameter	Size	Description
Status	1 byte	0x00: Success 0x42: Invalid parameter 0x0C: Command disallowed 0x11: Unsupported feature

Event(s) generated:

When the Aci\_Gap\_Set\_Discoverable command has completed, the controller will generate a command complete event.

### 4.3.6 Aci\_Gap\_Set\_Direct\_Connectable

**Table 26. Aci\_Gap\_Set\_Direct\_Connectable**

Command name	Parameters	Return
Aci_Gap_Set_Direct_Connectable (0xFC84)	Own_Address_Type Advertising Type Initiator_Address_Type Initiator_Direct_Address	Status

Description:

Set the device in direct connectable mode (as defined in GAP specification Volume 3, Section 9.3.3). Device uses direct connectable mode to advertise using either High Duty cycle advertisement events or Low Duty cycle advertisement events and the address as what is specified in the Own Address Type parameter. The Advertising Type parameter in the command specifies the type of the advertising used.

The device will be in directed connectable mode only for 1.28 seconds. If no connection is established within this duration, the device enters non discoverable mode and advertising will have to be again enabled explicitly.

**Table 27. Aci\_Gap\_Set\_Direct\_Connectable command parameters**

Parameter	Size	Description
Own_Address_Type	1 byte	0x00: Public device address (default) 0x01: Random device address
Advertising Type	1 byte	The advertising type 0x01 : High Duty Cycle directed Advertising 0x04 : Low Duty Cycle directed Advertising
Initiator_Address_Type	1 byte	0x00: Public device address (default) 0x01: Random device address
Initiator_Direct_Address	6 bytes	Initiator Bluetooth address

**Table 28. Aci\_Gap\_Set\_Direct\_Connectable return parameters**

Parameter	Size	Description
Status	1 byte	0x00: Success 0x42: Invalid parameter 0x0C: Command disallowed 0x11: Unsupported feature

Event(s) generated:

When the command has completed, the controller will generate a command complete event. The controller also generates a LE\_Connection\_Complete event with the status set

to directed\_advertising\_timeout if the connection was not established and 0x00 if the connection was successfully established.

### 4.3.7 Aci\_Gap\_Set\_IO\_Capability

**Table 29. Aci\_Gap\_Set\_IO\_Capability**

Command name	Parameters	Return
Aci_Gap_Set_IO_Capability (0xFC85)	IO Capability	Status

Description:

Set the IO capabilities of the device. This command has to be given only when the device is not in a connected state.

**Table 30. Aci\_Gap\_Set\_IO\_Capability command parameters**

Parameter	Size	Description
IO_Capability	1 byte	0x00: Display Only 0x01: Display yes/no 0x02: Keyboard Only 0x03: No Input, no output 0x04: Keyboard display

**Table 31. Aci\_Gap\_Set\_IO\_Capability return parameters**

Parameter	Size	Description
Status	1 byte	0x00: Success 0x42: Invalid parameter 0x0C: Command disallowed

Event(s) generated:

When the command has completed, the controller will generate a command complete event.

### 4.3.8 Aci\_Gap\_Set\_Auth\_Requirement

**Table 32. Aci\_Gap\_Set\_Auth\_Requirement**

Command name	Parameters	Return
Aci_Gap_Set_Auth_Requirement (0xFC86)	MIMT mode OOB enable OOB data Min encryption key size Max encryption key size Use fixed pin Fixed pin Bonding mode	Status

Description:

Set the authentication requirements for the device. If the OOB\_Enable is set to 0, the following 16 octets of OOB\_Data will be ignored on reception. This command has to be given only when the device is not in a connected state.

**Table 33. Aci\_Gap\_Set\_Auth\_Requirement command parameters**

Parameter	Size	Description
MIMT mode	1 byte	0x00: MIMT not required 0x01: MIMT required
OOB enable	1 byte	0x00: Out Of Bound authentication not enabled 0x01: Out Of Bound authentication enabled
OOB data	16 bytes	OOB data
Min encryption key size	1 byte	Minimum size of the encryption key to be used during the pairing process
Max encryption key size	1 byte	Maximum size of the encryption key to be used during the pairing process
Use fixed pin	1 byte	0x00: Use fixed pin during the pairing process 0x01: Do not use fixed pin during the pairing process. In this case, GAP will generate Evt_Blue_Pin_Code_Request event to the host.
Fixed pin	4 bytes	Fixed pin to be used during pairing if MIMT protection is enabled. Any random value between 0 to 999999
Bonding mode	1 byte	0x00: Bonding not required 0x01: Bonding required

**Table 34. Aci\_Gap\_Set\_Auth\_Requirement return parameters**

Parameter	Size	Description
Status	1 byte	0x00: Success 0x42: Invalid parameter 0x0C: Command Disallowed 0x11: Unsupported Feature

Event(s) generated:

When the command has completed, the controller will generate a command complete event.

### 4.3.9 Aci\_Gap\_Set\_Author\_Requirement

**Table 35. Aci\_Gap\_Set\_Author\_Requirement**

Command name	Parameters	Return
Aci_Gap_Set_Author_Requirement (0xFC87)	Connection handle Authorization enable	Status

Description:

Set the authorization requirements of the device. This command has to be given only when the device is not in a connected state.

**Table 36. Aci\_Gap\_Set\_Author\_Requirement command parameters**

Parameter	Size	Description
Connection handle	2 bytes	Handle of the connection in case BlueNRG-MS is configured as a master (otherwise it can be also 0).
Authorization enable	1 byte	0x00: Authorization not required (default) 0x01: Authorization required. This enables the authorization in the device and when a remote device tries to connect to GATT server, Evt_Blue_Gap_Authorization_Request event will be sent to the host in this case

**Table 37. Aci\_Gap\_Set\_Author\_Requirement return parameters**

Parameter	Size	Description
Status	1 byte	0x00: Success 0x42: Invalid parameter 0x0C: Command disallowed

Event(s) generated:

When the command has completed, the controller will generate a command complete event.

### 4.3.10 Aci\_Gap\_Pass\_Key\_Response

**Table 38. Aci\_Gap\_Pass\_Key\_Response**

Command name	Parameters	Return
Aci_Gap_Pass_Key_Response (0xFC88)	Pass Key	Status

Description:

This command should be send by the host in response to Evt\_Blue\_Pass\_Key\_Request event. The command parameter contains the pass key which will be used during the pairing process.

**Table 39. Aci\_Gap\_Pass\_Key\_Response command parameters**

Parameter	Size	Description
Pass key	4 byte	Pass key, value range: 0 - 999999 (decimal)

**Table 40. Aci\_Gap\_Pass\_Key\_Response return parameters**

Parameter	Size	Description
Status	1 byte	0x00: Success 0x42: Invalid parameter 0x0C: Command disallowed

Event(s) generated:

When controller receives this command, it will generate a command status event with return parameter. When paring process completes, it will generate Evt\_Blue\_Gap\_Pairing\_Complete event.

### 4.3.11 Aci\_Gap\_Authorization\_Response

**Table 41. Aci\_Gap\_Authorization\_Response**

Command name	Parameters	Return
Aci_Gap_Authorization_Response (0xFC89)	Authorize	Status

Description:

This command should be send by the host in response to Evt\_Blue\_Gap\_Authorization\_Request event.

**Table 42. Aci\_Gap\_Authorization\_Response command parameters**

Parameter	Size	Description
Authorize	1 byte	0x01: Authorize (accept connection) 0x02: Reject (reject connection)

**Table 43. Aci\_Gap\_Authorization\_Response return parameters**

Parameter	Size	Description
Status	1 byte	0x00: Success 0x42: Invalid parameter 0x0C: Command disallowed

Event(s) generated:

When the command has completed, the controller will generate a command complete event.

#### 4.3.12 Aci\_Gap\_Init

**Table 44. Aci\_Gap\_Init**

Command name	Parameters	Return
Aci_Gap_Init (0xFC8A)	Role enable_Privacy device_name_char_len	Status Service handle Dev name char handle Appearance Char handle

Description:

Register the GAP service with the GATT. The device name characteristic and appearance characteristic are added by default and the handles of these characteristics are returned in the event data. The role parameter can be a bitwise OR of any of the values mentioned below.

**Table 45. Aci\_Gap\_Init command parameters**

Parameter	Size	Description
Role	1 byte	0x01: Peripheral 0x02: Broadcaster 0x04: Central 0x08: Observer
enable_Privacy	1 byte	0x00: Privacy is disabled 0x01: Privacy is enabled
device_name_char_len	1 byte	Length of the device name characteristic

**Table 46. Aci\_Gap\_Init return parameters**

Parameter	Size	Description
Status	1 byte	0x00 : Success 0x47 : Error. Does not have sufficient memory to add the required gatt characteristics 0x12 : HCI_Invalid Parameters
Service handle	2 bytes	Handle for the GAP service
Dev name char handle	2 bytes	Handle for the device name characteristic added to the GAP service
Appearance char handle	2 bytes	Handle for the appearance characteristic added to the GAP service

Event(s) generated:

On the completion of the command, a command complete event is generated. The status indicates success or failure. If the registration of GAP service is successful, the event data contains the handle for the GAP service registered with GATT and also the attribute handles for the device name and appearance characteristics.

#### 4.3.13 Aci\_Gap\_Set\_Non\_Connectable

**Table 47. Aci\_Gap\_Set\_Non\_Connectable**

Command name	Parameters	Return
Aci_Gap_Set_Non_Connectable (0xFC8B)	Advertising_Event_Type own_address_Type	Status

Description:

Put the device into non connectable mode. This mode does not support connection. The privacy setting done in the gap\_init command plays a role in deciding the valid parameters for this command.

**Table 48. Aci\_Gap\_Set\_Non\_Connectable command parameters**

Parameter	Size	Description
Advertising_Event_Type	1 byte	0x02: Scannable undirected advertising 0x03: Non connectable undirected advertising
own_address_type	1 byte	If Privacy is disabled: 0x00 : Public device address type 0x01 : static random address type If Privacy is enabled: 0x02 : Private Resolvable Address type 0x03 : Private Non Resolvable address type

Table 49. Aci\_Gap\_Set\_Non\_Connectable return parameters

Parameter	Size	Description
Status	1 byte	0x00 : Success 0x41 : BLE_Status_Failed 0x42 : BLE_Status_Invalid Parameter 0x0C: Command Disallowed 0x12 : Invalid HCI parameters

Event(s) generated:

A command complete event is generated upon the completion of the command.

#### 4.3.14 Aci\_Gap\_Set\_Undirected\_Connectable

Table 50. Aci\_Gap\_Set\_Undirected\_Connectable

Command name	Parameters	Return
Aci_Gap_Set_Undirected_Connectable (0xFC8C)	Advertising filtering policy Own address type	Status

Description:

Put the device into undirected connectable mode. The privacy setting done in the gap\_init command plays a role in deciding the valid parameters for this command.

Table 51. Aci\_Gap\_Set\_Undirected\_Connectable command parameters

Parameter	Size	Description
Advertising_Event_Type	1 byte	0x00: Allow scan request from any, allow connect request from any (default). 0x03: Allow scan request from white list only, allow connect request from White List Only.
Own_Address_Type	1 byte	If privacy is disabled 0x00: Public device address (default) 0x01: Random device address If privacy is enabled 0x02: Private resolvable address 0x03: Non resolvable address

Table 52. Aci\_Gap\_Set\_Undirected\_Connectable return parameters

Parameter	Size	Description
Status	1 byte	0x00: Success 0x42: Invalid parameter 0x0C: Command disallowed 0x11: Unsupported feature

Event(s) generated:

A command complete event is generated on the completion of the command.

### 4.3.15 Aci\_Gap\_Slave\_Security\_Request

**Table 53. Aci\_Gap\_Slave\_Security\_Request**

Command name	Parameters	Return
Aci_Gap_Slave_Security_Request (0xFC8D)	Bonding MITM Protection	Status

Description:

This command has to be issued to notify the master of the security requirements of the slave.

**Table 54. Aci\_Gap\_Slave\_Security\_Request command parameters**

Parameter	Size	Description
Connection handle	2 bytes	Handle of the connection on which the slave security request will be sent (ignored in slave-only role)
Bonding	1 byte	0x00: No bonding 0x01: Bonding required
MITM protection	1 byte	0x00: MIMT protection not required 0x01: MIMT protection required

**Table 55. Aci\_Gap\_Slave\_Security\_Request return parameters**

Parameter	Size	Description
Status	1 byte	0x00: Success 0x1F: Out of memory 0x0C: Command disallowed

Event(s) generated:

A command status event will be generated when a valid command is received. On completion of the command, i.e. when the security request is successfully transmitted to the master, a Evt\_Blue\_Slave\_Security\_Initiated vendor specific event will be generated.

### 4.3.16 Aci\_Gap\_Update\_Adv\_Data

**Table 56. Aci\_Gap\_Update\_Adv\_Data**

Command name	Parameters	Return
Aci_Gap_Update_Adv_Data (0xFC8E)	Adv Data Length Adv Data	Status

Description:

This command can be used to update the advertising data for a particular AD type. If the AD type specified does not exist, then it is added to the advertising data. If the overall advertising data length is more than 31 octets after the update, then the command is rejected and the old data is retained.

**Table 57. Aci\_Gap\_Update\_Adv\_Data command parameters**

Parameter	Size	Description
Adv Data Length	1 byte	The number of bytes of data that is to follow in the advData parameter
Adv Data	0-N bytes	The advData has to be formatted as specified in Bluetooth specification (Volume 3, Part C, 11), including data length

**Table 58. Aci\_Gap\_Update\_Adv\_Data return parameters**

Parameter	Size	Description
Status	1 byte	0x00: Success 0x41: Failed

Event(s) generated:

A command complete event will be generated when the command has completed with the status indicating success or failure.

### 4.3.17 Aci\_Gap\_Delete\_AD\_Type

**Table 59. Aci\_Gap\_Delete\_AD\_Type**

Command name	Parameters	Return
Aci_Gap_Delete_AD_Type (0xFC8F)	AD Type	Status

Description:

This command can be used to delete the specified AD type from the advertisement data if present.

**Table 60. Aci\_Gap\_Delete\_AD\_Type command parameters**

Parameter	Size	Description
AD Type	1 byte	0x01: AD_TYPE_FLAGS 0x02: AD_TYPE_16_BIT_SERV_UUID 0x03: AD_TYPE_16_BIT_SERV_UUID_CMPLT_LIST 0x04: AD_TYPE_32_BIT_SERV_UUID 0x05: AD_TYPE_32_BIT_SERV_UUID_CMPLT_LIST 0x06: AD_TYPE_128_BIT_SERV_UUID 0x07: AD_TYPE_128_BIT_SERV_UUID_CMPLT_LIST 0x08: AD_TYPE_SHORTENED_LOCAL_NAME 0x09: AD_TYPE_COMPLETE_LOCAL_NAME 0x0A: AD_TYPE_TX_POWER_LEVEL 0x10: AD_TYPE_SEC_MGR_TK_VALUE 0x11: AD_TYPE_SEC_MGR_OOB_FLAGS 0x12: AD_TYPE_SLAVE_CONN_INTERVAL 0x14: AD_TYPE_SERV_SOLICIT_16_BIT_UUID_LIST 0x15: AD_TYPE_SERV_SOLICIT_32_BIT_UUID_LIST 0x16: AD_TYPE_SERVICE_DATA 0xFF: AD_TYPE_MANUFACTURER_SPECIFIC_DATA

**Table 61. Aci\_Gap\_Delete\_AD\_Type return parameters**

Parameter	Size	Description
Status	1 byte	0x00: Success 0x1F: AD Type not found

Event(s) generated:

A command complete event will be generated and the status indicates success or failure.

### 4.3.18 Aci\_Gap\_Get\_Security\_Level

**Table 62. Aci\_Gap\_Get\_Security\_Level**

Command name	Parameters	Return
Aci_Gap_Get_Security_Level (0xFC90)		Status MIMT protection required Bonding required OOB data present Passkey required

Description:

This command can be used to get the current security settings of the device.

Table 63. Aci\_Gap\_Get\_Security\_Level return parameters

Parameter	Size	Description
Status	1 byte	0x00: Success
MIMT protection required	1 byte	0x00: Not required 0x01: Required
Bonding required	1 byte	0x00: Not required 0x01: Required
OOB data present	1 byte	0x00: Not present 0x01: Present
Passkey required	1 byte	0x00: Not required 0x01: Fixed pin is present which is being used 0x2: Passkey required for pairing. An event will be generated when required.

Event(s) generated:

The security parameters will be returned in a command complete event. The first byte indicates the status of the security manager (channel opened or closed).

### 4.3.19 Aci\_Gap\_Set\_Event\_Mask

**Table 64. Aci\_Gap\_Set\_Event\_Mask**

Command name	Parameters	Return
Aci_Gap_Set_Event_Mask (0xFC91)	Event mask	Status

Description:

It allows masking events from the GAP. The default configuration is all the events masked.

**Table 65. Aci\_Gap\_Set\_Event\_Mask command parameters**

Parameter	Size	Description
Event mask	2 bytes	0x0001: Evt_Blue_Gap_Limited_Discoverable 0x0002: Evt_Blue_Pairing_Complete 0x0004: Evt_Blue_Pass_Key_Request 0x0008: Evt_Blue_Authorization_Request 0x0010: Evt_Blue_Slave_Security_Initiated 0x0020: Evt_Blue_Gap_Bond_Lost

**Table 66. Aci\_Gap\_Set\_Event\_Mask return parameters**

Parameter	Size	Description
Status	1 byte	0x00: Success 0x12: Invalid HCI command parameter

Event(s) generated:

A command complete event is generated on the completion of the command.

### 4.3.20 Aci\_Gap\_Configure\_WhiteList

**Table 67. Aci\_Gap\_Configure\_WhiteList**

Command name	Parameters	Return
Aci_Gap_Configure_WhiteList (0xFC92)		Status

Description:

Configure the controller's white list with devices that are present in the security database.

**Table 68. Aci\_Gap\_Configure\_WhiteList return parameters**

Parameter	Size	Description
Status	1 byte	0x00: Success 0x12: Invalid HCI command parameter 0x47: Error

Event(s) generated:

The controller will generate a command complete event on the completion of the command and the status indicates whether the white list was configured or not. The command will return an error if there are no devices in the database or it was unable to add to the white list.

### 4.3.21 Aci\_Gap\_Terminate

**Table 69. Aci\_Gap\_Terminate**

Command name	Parameters	Return
Aci_Gap_Terminate (0xFC93)	Conn handle Reason	Status

Description:

Command the controller to terminate the connection.

**Table 70. Aci\_Gap\_Terminate command parameters**

Parameter	Size	Description
Conn handle	2 bytes	Handle of the connection to be terminated
Reason	1 byte	Reason for requesting disconnection. The error code can be any of ones as specified for the disconnected command in the HCI specification

**Table 71. Aci\_Gap\_Terminate return parameters**

Parameter	Size	Description
Status	1 byte	0x00: Success 0x0C: Command disallowed

Event(s) generated:

The controller will generate a command status event when the command is received and a Disconnection Complete event will be generated when the link is disconnected.

#### 4.3.22 Aci\_Gap\_Clear\_Security\_Database

**Table 72. Aci\_Gap\_Clear\_Security\_Database**

Command name	Parameters	Return
Aci_Gap_Clear_Security_Database (0xFC94)		Status

Description:

Clear the security database. All the devices in the security database will be removed.

**Table 73. Aci\_Gap\_Clear\_Security\_Database return parameters**

Parameter	Size	Description
Status	1 byte	0x00: Success 0x4B: Flash erase failed

Event(s) generated:

The controller will generate a command complete event on the completion of the command.

### 4.3.23 Aci\_Gap-Allow\_Rebond

**Table 74. Aci\_Gap-Allow\_Rebond**

Command name	Parameters	Return
Aci_Gap-Allow_Rebond (0xFC95)	Connection_Handle	Status

**Table 75. Aci\_Gap-Allow\_Rebond command parameters**

Parameter	Size	Description
Connection_Handle	2 bytes	Handle of the connection with which Re-Bonding is required

Description:

This command should be given by the application when it receives the EVT\_BLUE\_BOND\_LOST if it wants the re-bonding to happen successfully. If this command is not given on receiving the event, the bonding procedure will timeout.

**Table 76. Aci\_Gap-Allow\_Rebond return parameters**

Parameter	Size	Description
Status	1 byte	0x00: Success

Event(s) generated:

The controller will generate a command complete event on the completion of the command. Even if the command is given when it is not valid, success will be returned but internally it will have no effect.

### 4.3.24 Aci\_Gap\_Start\_Limited\_Discovery\_Proc

**Table 77. Aci\_Gap\_Start\_Limited\_Discovery\_Proc**

Command name	Parameters	Return
Aci_Gap_Start_Limited_Discovery_Proc (0xFC96)	Scan_Interval Scan_Window Own_Address_Type filterDuplicates	Status

Description:

Start the limited discovery procedure. The controller is commanded to start active scanning. When this procedure is started, only the devices in limited discoverable mode are returned to the upper layers.

**Table 78. Aci\_Gap\_Start\_Limited\_Discovery\_Proc command parameters**

Parameter	Size	Description
Scan_Interval	2 bytes	Time interval from when the controller started its last LE scan until it begins the subsequent LE scan. The scan interval should be a number in the range 0x0004 to 0x4000. This corresponds to a time range 2.5 msec to 10240 msec. For a number N, Time = N * 0.625 msec.
Scan_Window	2 bytes	Amount of time for the duration of the LE scan. Scan_Window shall be less than or equal to Scan_Interval. The scan window should be a number in the range 0x0004 to 0x4000. This corresponds to a time range 2.5 msec to 10240 msec. For a number N, Time = N * 0.625 msec.
Own_Address_Type	1 byte	0x00: Public device address (default) 0x01: Random device address
filterDuplicates	1 byte	0x00: Do not filter the duplicates (default) 0x01: Filter duplicates

**Table 79. Aci\_Gap\_Start\_Limited\_Discovery\_Proc return parameters**

Parameter	Size	Description
Status	1 byte	0x00: BLE_STATUS_SUCCESS 0x12: BLE_STATUS_INVALID_PARAMETER 0x0C: ERR_COMMAND_DISALLOWED

Event(s) generated:

A command status event is generated as soon as the command is given. If BLE\_STATUS\_SUCCESS is returned, the procedure is terminated when either the upper layers issue a command to terminate the procedure by issuing the command Aci\_Gap\_Terminate\_Gap\_Procedure with the procedure code set to 0x01 or a timeout happens. When the procedure is terminated due to any of the above reasons, Evt\_Blue\_Gap\_Procedure\_Complete event is returned with the procedure code set to 0x01. The device found when the procedure is ongoing is returned to the upper layers through the event LE\_Advertising\_Report.

4.3.25 Aci\_Gap\_Start\_General\_Discovery\_Proc

Table 80. Aci\_Gap\_Start\_General\_Discovery\_Proc

Command name	Parameters	Return
Aci_Gap_Start_General_Discovery_Proc (0xFC97)	Scan_Interval Scan_Window Own_Address_Type filterDuplicates	Status

Description:

Start the general discovery procedure. The controller is commanded to start active scanning.

Table 81. Aci\_Gap\_Start\_General\_Discovery\_Proc command parameters

Parameter	Size	Description
Scan_Interval	2 bytes	Time interval from when the controller started its last LE scan until it begins the subsequent LE scan. The scan interval should be a number in the range 0x0004 to 0x4000. This corresponds to a time range 2.5 msec to 10240 msec. For a number N, Time = N * 0.625 msec.
Scan_Window	2 bytes	Amount of time for the duration of the LE scan. Scan_Window shall be less than or equal to Scan_Interval. The scan window should be a number in the range 0x0004 to 0x4000. This corresponds to a time range 2.5 msec to 10240 msec. For a number N, Time = N * 0.625 msec
Own_Address_Type	1 byte	0x00: Public device address (default) 0x01: Random device address
filterDuplicates	1 byte	0x00: Do not filter the duplicates (default) 0x01: Filter duplicates

Table 82. Aci\_Gap\_Start\_General\_Discovery\_Proc return parameters

Parameter	Size	Description
Status	1 byte	0x00: BLE_STATUS_SUCCESS 0x12: BLE_STATUS_INVALID_PARAMETER 0x0C: ERR_COMMAND_DISALLOWED

Event(s) generated:

A command status event is generated as soon as the command is given. If BLE\_STATUS\_SUCCESS is returned, the procedure is terminated when either the upper layers issue a command to terminate the procedure by issuing the command Aci\_Gap\_Terminate\_Gap\_Procedure with the procedure code set to 0x02 or a timeout happens. When the procedure is terminated due to any of the above reasons, Evt\_Blue\_Gap\_Procedure\_Complete event is returned with the procedure code set to 0x02.

The device found when the procedure is ongoing is returned to the upper layers through the event LE\_Advertising\_Report.

### 4.3.26 Aci\_Gap\_Start\_Name\_Discovery\_Proc

**Table 83. Aci\_Gap\_Start\_Name\_Discovery\_Proc**

Command name	Parameters	Return
Aci_Gap_Start_Name_Discovery_Proc (0xFC98)	Scan_Interval Scan_Window Peer_Address_Type Peer_Address Own_Address_Type Conn_Interval_Min Conn_Interval_Max Conn_Latency Supervision_Timeout Conn_Len_Min Conn_Len_Max	Status

Description:

Start the name discovery procedure. A LE\_Create\_Connection call will be made to the controller by GAP with the initiator filter policy set to “ignore whitelist and process connectable advertising packets only for the specified device”. Once a connection is established, GATT procedure is started to read the device name characteristic. When the read is completed (successfully or unsuccessfully), a Evt\_Blue\_Gap\_Procedure\_Complete event is given to the upper layer. The event also contains the name of the device if the device name was read successfully.

**Table 84. Aci\_Gap\_Start\_Name\_Discovery\_Proc command parameters**

Parameter	Size	Description
Scan_Interval	2 bytes	Time interval from when the controller started its last LE scan until it begins the subsequent LE scan. The scan interval should be a number in the range 0x0004 to 0x4000. This corresponds to a time range 2.5 msec to 10240 msec. For a number N, Time = N * 0.625 msec.
Scan_Window	2 bytes	Amount of time for the duration of the LE scan. Scan_Window shall be less than or equal to Scan_Interval. The scan window should be a number in the range 0x0004 to 0x4000. This corresponds to a time range 2.5 msec to 10240 msec. For a number N, Time = N * 0.625 msec.
Peer_Address_Type	1 byte	0x00: Public device address (default) 0x01: Random device address
Peer_Address	6 bytes	Address of the peer device with which a connection has to be established.
Own_Address_Type	1 byte	0x00: Public device address (default) 0x01: Random device address

**Table 84. Aci\_Gap\_Start\_Name\_Discovery\_Proc command parameters (continued)**

Parameter	Size	Description
Conn_Interval_Min	2 bytes	Minimum value for the connection event interval. This shall be less than or equal to Conn_Interval_Max. Range: 0x0006 to 0x0C80 Time = N * 1.25 msec Time Range: 7.5 msec to 4 seconds
Conn_Interval_Max	2 bytes	Maximum value for the connection event interval. This shall be greater than or equal to Conn_Interval_Min. Range: 0x0006 to 0x0C80 Time = N * 1.25 msec Time Range: 7.5 msec to 4 seconds
Conn_Latency	2 bytes	Slave latency for the connection in number of connection events. Range: 0x0000 to 0x01F4
Supervision_Timeout	2 bytes	Supervision timeout for the LE Link. Range: 0x000A to 0x0C80 Time = N * 10 msec Time Range: 100 msec to 32 seconds
Conn_Len_Min	2 bytes	Minimum length of connection event needed for the LE connection. Range: 0x0000 – 0xFFFF Time = N * 0.625 msec.
Conn_Len_Max	2 bytes	Maximum length of connection event needed for the LE connection. Range: 0x0000 – 0xFFFF Time = N * 0.625 msec.

**Table 85. Aci\_Gap\_Start\_Name\_Discovery\_Proc return parameters**

Parameter	Size	Description
Status	1 byte	0x00: BLE_STATUS_SUCCESS 0x12: BLE_STATUS_INVALID_PARAMETER 0x0C: ERR_COMMAND_DISALLOWED

Event(s) generated:

A command status event is generated as soon as the command is given. If BLE\_STATUS\_SUCCESS is returned, on completion of the procedure, a Evt\_Blue\_Gap\_Procedure\_Complete event is returned with the procedure code set to 0x04.

4.3.27 Aci\_Gap\_Start\_Auto\_Conn\_Establishment

Table 86. Aci\_Gap\_Start\_Auto\_Conn\_Establishment

Command name	Parameters	Return
Aci_Gap_Start_Auto_Conn_Establishment (0xFC99)	Scan_Interval Scan_Window Own_Address_Type Conn_Interval_Min Conn_Interval_Max Conn_Latency Supervision_Timeout Conn_Len_Min Conn_Len_Max Num_WhiteList_Entries Addr_Array	Status

Description:

Start the auto connection establishment procedure. The devices specified are added to the white list of the controller and a LE\_Create\_Connection call will be made to the controller by GAP with the initiator filter policy set to “use whitelist to determine which advertiser to connect to”. When a command is issued to terminate the procedure by upper layer, a LE\_Create\_Connection\_Cancel call will be made to the controller by GAP.

Table 87. Aci\_Gap\_Start\_Auto\_Conn\_Establishment command parameters

Parameter	Size	Description
Scan_Interval	2 bytes	Time interval from when the controller started its last LE scan until it begins the subsequent LE scan. The scan interval should be a number in the range 0x0004 to 0x4000. This corresponds to a time range 2.5 msec to 10240 msec. For a number N, Time = N * 0.625 msec.
Scan_Window	2 bytes	Amount of time for the duration of the LE scan. Scan_Window shall be less than or equal to Scan_Interval. The scan window should be a number in the range 0x0004 to 0x4000. This corresponds to a time range 2.5 msec to 10240 msec. For a number N, Time = N * 0.625 msec.
Own_Address_Type	1 byte	0x00: Public device address (default) 0x01: Random device address
Conn_Interval_Min	2 bytes	Minimum value for the connection event interval. This shall be less than or equal to Conn_Interval_Max. Range: 0x0006 to 0x0C80 Time = N * 1.25 msec Time Range: 7.5 msec to 4 seconds

**Table 87. Aci\_Gap\_Start\_Auto\_Conn\_Establishment command parameters**

Parameter	Size	Description
Conn_Interval_Max	2 bytes	Maximum value for the connection event interval. This shall be greater than or equal to Conn_Interval_Min. Range: 0x0006 to 0x0C80 Time = N * 1.25 msec Time Range: 7.5 msec to 4 seconds
Conn_Latency	2 bytes	Slave latency for the connection in number of connection events. Range: 0x0000 to 0x01F4
Supervision_Timeout	2 bytes	Supervision timeout for the LE Link. Range: 0x000A to 0x0C80 Time = N * 10 msec Time Range: 100 msec to 32 seconds
Conn_Len_Min	2 bytes	Minimum length of connection event needed for the LE connection. Range: 0x0000 – 0xFFFF Time = N * 0.625 msec.
Conn_Len_Max	2 bytes	Maximum length of connection event needed for the LE connection. Range: 0x0000 – 0xFFFF Time = N * 0.625 msec.
Num_WhiteList_Entries	1 byte	Number of devices that have to be added to the whitelist.
Addr_Array	N * 7 bytes	The addr_array will contain Num_White_List_Entries number of addresses and their address types that have to be added into the whitelist. The format of the addr_array should be address type followed by address.

**Table 88. Aci\_Gap\_Start\_Auto\_Conn\_Establishment return parameters**

Parameter	Size	Description
Status	1 byte	0x00: BLE_STATUS_SUCCESS 0x12: BLE_STATUS_INVALID_PARAMETER 0x0C: ERR_COMMAND_DISALLOWED

Event(s) generated:

A command status event is generated as soon as the command is given. If BLE\_STATUS\_SUCCESS is returned, the procedure is terminated when either a connection is successfully established with one of the specified devices in the white list or the procedure is explicitly terminated by issuing the command

Aci\_Gap\_Terminate\_Gap\_Procedure with the procedure code set to 0x08. A

Evt\_Blue\_Gap\_Procedure\_Complete event is returned with the procedure code set to 0x08.

### 4.3.28 Aci\_Gap\_Start\_General\_Conn\_Establishment

**Table 89. Aci\_Gap\_Start\_General\_Conn\_Establishment**

Command name	Parameters	Return
Aci_Gap_Start_General_Conn_Establishment (0xFC9A)	Scan_Type Scan_Interval Scan_Window Own_Address_Type filterDuplicates	Status

Start a general connection establishment procedure. The host enables scanning in the controller with the scanner filter policy set to “accept all advertising packets” and from the scanning results, all the devices are sent to the upper layer using the event LE\_Advertising\_Report. The upper layer then has to select one of the devices to which it wants to connect by issuing the command Aci\_Gap\_Create\_Connection. If privacy is enabled, then either a private resolvable address or a non resolvable address, based on the address type specified in the command is set as the scanner address but the gap create connection always uses a private resolvable address if the general connection establishment procedure is active..

**Table 90. Aci\_Gap\_Start\_General\_Conn\_Establishment command parameters**

Parameter	Size	Description
Scan_Type	1 byte	0x00: Passive scanning 0x01: Active scanning
Scan_Interval	2 bytes	Time interval from when the controller started its last LE scan until it begins the subsequent LE scan. The scan interval should be a number in the range 0x0004 to 0x4000. This corresponds to a time range 2.5 msec to 10240 msec. For a number N, Time = N * 0.625 msec.
Scan_Window	2 bytes	Amount of time for the duration of the LE scan. Scan_Window shall be less than or equal to Scan_Interval. The scan window should be a number in the range 0x0004 to 0x4000. This corresponds to a time range 2.5 msec to 10240 msec. For a number N, Time = N * 0.625 msec.
Own_Address_Type	1 byte	If Privacy is disabled, then the scanner address should be set as 0x00: Public Device address (default) 0x01: Random Device Address If Privacy is enabled, then the scanner address should be set as- 0x02 : Private Resolvable address 0x03 : Non Resolvable Address
filterDuplicates	1 byte	0x00: Do not filter the duplicates (default) 0x01: Filter duplicates

**Table 91. Aci\_Gap\_Start\_General\_Conn\_Establishment return parameters**

Parameter	Size	Description
Status	1 byte	0x00: BLE_STATUS_SUCCESS 0x12: BLE_STATUS_INVALID_PARAMETER 0x0C: ERR_COMMAND_DISALLOWED

Event(s) generated:

A command status event is generated when the command is issued. If the status is returned as BLE\_STATUS\_SUCCESS, then on completion of the procedure a Evt\_Blue\_Gap\_Procedure\_Completed event is generated with the procedure code set to 0x10. The procedure is terminated when a connection is established or the upper layer terminates the procedure by issuing the command Aci\_Gap\_Terminate\_Gap\_Procedure with the procedure code set to 0x10.

### 4.3.29 Aci\_Gap\_Start\_Selective\_Conn\_Establishment

**Table 92. Aci\_Gap\_Start\_Selective\_Conn\_Establishment**

Command name	Parameters	Return
Aci_Gap_Start_Selective_Conn_Establishment (0xFC9B)	Scan_Type Scan_Interval Scan_Window Own_Address_Type filterDuplicates Num_WhiteList_Entries Addr_Array	Status

Description:

Start a selective connection establishment procedure. The GAP adds the specified device addresses into white list and enables scanning in the controller with the scanner filter policy set to “accept packets only from devices in whitelist”. All the devices found are sent to the upper layer by the event LE\_Advertising\_Report. The upper layer then has to select one of the devices to which it wants to connect by issuing the command Aci\_Gap\_Create\_Connection.

**Table 93. Aci\_Gap\_Start\_Selective\_Conn\_Establishment command parameters**

Parameter	Size	Description
Scan_Type	1 byte	0x00: Passive scanning 0x01: Active scanning
Scan_Interval	2 bytes	Time interval from when the controller started its last LE scan until it begins the subsequent LE scan. The scan interval should be a number in the range 0x0004 to 0x4000. This corresponds to a time range 2.5 msec to 10240 msec. For a number N, Time = N * 0.625 msec.

**Table 93. Aci\_Gap\_Start\_Selective\_Conn\_Establishment command parameters**

Parameter	Size	Description
Scan_Window	2 bytes	Amount of time for the duration of the LE scan. Scan_Window shall be less than or equal to Scan_Interval. The scan window should be a number in the range 0x0004 to 0x4000. This corresponds to a time range 2.5 msec to 10240 msec. For a number N, Time = N * 0.625 msec.
Own_Address_Type	1 byte	0x00: Public device address (default) 0x01: Random device address
filterDuplicates	1 byte	0x00: Do not filter the duplicates (default) 0x01: Filter duplicates
Num_WhiteList_Entries	1 byte	Number of devices that have to be added to the whitelist.
Addr_Array	7 bytes	The addr_array will contain Num_White_List_Entries number of addresses and their address types that have to be added into the whitelist. The format of the addr_array should be address type followed by address.

**Table 94. Aci\_Gap\_Start\_General\_Conn\_Establishment return parameters**

Parameter	Size	Description
Status	1 byte	0x00: BLE_STATUS_SUCCESS 0x12: BLE_STATUS_INVALID_PARAMETER 0x0C: ERR_COMMAND_DISALLOWED

Event(s) generated:

A command status event is generated when the command is issued. If the status is returned as BLE\_STATUS\_SUCCESS, then on completion of the procedure a Evt\_Blue\_Gap\_Procedure\_Completed event is generated with the procedure code set to 0x20. The procedure is terminated when a connection is established or the upper layer terminates the procedure by issuing the command Aci\_Gap\_Terminate\_Gap\_Procedure with the procedure code set to 0x20.

### 4.3.30 Aci\_Gap\_Create\_Connection

**Table 95. Aci\_Gap\_Create\_Connection**

Command name	Parameters	Return
Aci_Gap_Create_Connection (0xFC9C)	Scan_Interval Scan_Window Peer_Address_Type Peer_Address Own_Address_Type Conn_Interval_Min Conn_Interval_Max Conn_Latency Supervision_Timeout Conn_Len_Min Conn_Len_Max	Status

**Description:**

Start the direct connection establishment procedure. A LE\_Create\_Connection call will be made to the controller by GAP with the initiator filter policy set to “ignore whitelist and process connectable advertising packets only for the specified device”. The procedure can be terminated explicitly by the upper layer by issuing the command Aci\_Gap\_Terminate\_Gap\_Procedure. When a command is issued to terminate the procedure by upper layer, a LE\_Create\_Connection\_Cancel call will be made to the controller by GAP.

**Table 96. Aci\_Gap\_Create\_Connection command parameters**

Parameter	Size	Description
Scan_Interval	2 bytes	Time interval from when the controller started its last LE scan until it begins the subsequent LE scan. The scan interval should be a number in the range 0x0004 to 0x4000. This corresponds to a time range 2.5 msec to 10240 msec. For a number N, Time = N * 0.625 msec.
Scan_Window	2 bytes	Amount of time for the duration of the LE scan. Scan_Window shall be less than or equal to Scan_Interval. The scan window should be a number in the range 0x0004 to 0x4000. This corresponds to a time range 2.5 msec to 10240 msec. For a number N, Time = N * 0.625 msec.
Peer_Address_Type	1 byte	0x00: Public device address (default) 0x01: Random device address
Peer_Address	6 bytes	Address of the peer device with which a connection has to be established.
Own_Address_Type	1 byte	0x00: Public device address (default) 0x01: Random device address

**Table 96. Aci\_Gap\_Create\_Connection command parameters (continued)**

Parameter	Size	Description
Conn_Interval_Min	2 bytes	Minimum value for the connection event interval. This shall be less than or equal to Conn_Interval_Max. Range: 0x0006 to 0x0C80 Time = N * 1.25 msec Time Range: 7.5 msec to 4 seconds
Conn_Interval_Max	2 bytes	Maximum value for the connection event interval. This shall be greater than or equal to Conn_Interval_Min. Range: 0x0006 to 0x0C80 Time = N * 1.25 msec Time Range: 7.5 msec to 4 seconds
Conn_Latency	2 bytes	Slave latency for the connection in number of connection events. Range: 0x0000 to 0x01F4
Supervision_Timeout	2 bytes	Supervision timeout for the LE Link. Range: 0x000A to 0x0C80 Time = N * 10 msec Time Range: 100 msec to 32 seconds
Conn_Len_Min	2 bytes	Minimum length of connection event needed for the LE connection. Range: 0x0000 – 0xFFFF Time = N * 0.625 msec.
Conn_Len_Max	2 bytes	Maximum length of connection event needed for the LE connection. Range: 0x0000 – 0xFFFF Time = N * 0.625 msec.

**Table 97. Aci\_Gap\_Create\_Connection return parameters**

Parameter	Size	Description
Status	1 byte	0x00: BLE_STATUS_SUCCESS 0x12: BLE_STATUS_INVALID_PARAMETER 0x0C: ERR_COMMAND_DISALLOWED

Event(s) generated:

A command status event is generated as soon as the command is given. If BLE\_STATUS\_SUCCESS is returned, on termination of the procedure, a LE\_Connection\_Complete event is returned. The procedure can be explicitly terminated by the upper layer by issuing the command Aci\_Gap\_Terminate\_Gap\_Procedure with the procedure\_code set to 0x40.

### 4.3.31 Aci\_Gap\_Terminate\_Gap\_Procedure

**Table 98. Aci\_Gap\_Terminate\_Gap\_Procedure**

Command name	Parameters	Return
Aci_Gap_Terminate_Gap_Procedure (0xFC9D)	Procedure_Code	Status

Description:

The gap procedure specified is terminated.

**Table 99. Aci\_Gap\_Terminate\_Gap\_Procedure command parameters**

Parameter	Size	Description
Procedure_Code	1 byte	0x01: LIMITED_DISCOVERY_PROC 0x02: GENERAL_DISCOVERY_PROC 0x04: NAME_DISCOVERY_PROC 0x08: AUTO_CONNECTION_ESTABLISHMENT_PROC 0x10: GENERAL_CONNECTION_ESTABLISHMENT_PROC 0x20: SELECTIVE_CONNECTION_ESTABLISHMENT_PROC 0x40: DIRECT_CONNECTION_ESTABLISHMENT_PROC 0x80: OBSERVATION_PROC

**Table 100. Aci\_Gap\_Terminate\_Gap\_Procedure return parameters**

Parameter	Size	Description
Status	1 byte	0x00: BLE_STATUS_SUCCESS 0x12: BLE_STATUS_INVALID_PARAMETER

Event(s) generated:

A command complete event is generated for this command. If the command was successfully processed, the status field will have the value BLE\_STATUS\_SUCCESS and Evt\_Blue\_Gap\_Procedure\_Completed event is returned with the procedure code set to the corresponding procedure.

### 4.3.32 Aci\_Gap\_Start\_Connection\_Update

**Table 101. Aci\_Gap\_Start\_Connection\_Update**

Command name	Parameters	Return
Aci_Gap_Start_Connection_Update (0xFC9E)	Conn_Handle Conn_Interval_Min Conn_Interval_Max Conn_Latency Supervision_Timeout Conn_Len_Min Conn_Len_Max	Status

Description:

Start the connection update procedure. A LE\_Connection\_Update call is be made to the controller by GAP

**Table 102. Aci\_Gap\_Start\_Connection\_Update command parameters**

Parameter	Size	Description
Conn_Handle	2 bytes	Handle of the connection for which the update procedure has to be started.
Conn_Interval_Min	2 bytes	Minimum value for the connection event interval. This shall be less than or equal to Conn_Interval_Max. Range: 0x0006 to 0x0C80 Time = N * 1.25 msec Time Range: 7.5 msec to 4 seconds
Conn_Interval_Max	2 bytes	Maximum value for the connection event interval. This shall be greater than or equal to Conn_Interval_Min. Range: 0x0006 to 0x0C80 Time = N * 1.25 msec Time Range: 7.5 msec to 4 seconds
Conn_Latency	2 bytes	Slave latency for the connection in number of connection events. Range: 0x0000 to 0x01F4
Supervision_Timeout	2 bytes	Supervision timeout for the LE Link. Range: 0x000A to 0x0C80 Time = N * 10 msec Time Range: 100 msec to 32 seconds

**Table 102. Aci\_Gap\_Start\_Connection\_Update command parameters (continued)**

Parameter	Size	Description
Conn_Len_Min	2 bytes	Minimum length of connection event needed for the LE connection. Range: 0x0000 – 0xFFFF Time = N * 0.625 msec.
Conn_Len_Max	2 bytes	Maximum length of connection event needed for the LE connection. Range: 0x0000 – 0xFFFF Time = N * 0.625 msec.

**Table 103. Aci\_Gap\_Start\_Connection\_Update return parameters**

Parameter	Size	Description
Status	1 byte	0x00: BLE_STATUS_SUCCESS 0x12: BLE_STATUS_INVALID_PARAMETER 0x0C: ERR_COMMAND_DISALLOWED

Event(s) generated:

A command status event is generated as soon as the command is given. If BLE\_STATUS\_SUCCESS is returned, on completion of connection update, a LE\_Connection\_Update\_Complete event is returned to the upper layer.

### 4.3.33 Aci\_Gap\_Send\_Pairing\_Request

**Table 104. Aci\_Gap\_Send\_Pairing\_Request**

Command name	Parameters	Return
Aci_Gap_Send_Pairing_Request (0xFC9F)	Conn_Handle Force_Rebond	Status

Description:

Send the SM pairing request to start a pairing process. The authentication requirements and IO capabilities should be set before issuing this command using the Aci\_Set\_IO\_Capabilities and Aci\_Set\_Authentication\_Requirements commands.

**Table 105. Aci\_Gap\_Send\_Pairing\_Request command parameters**

Parameter	Size	Description
Conn_Handle	2 bytes	Handle of the connection for which the pairing request has to be sent.
Force_Rebond	1 byte	The bit 0 decides whether pairing request has to be sent if the device is previously bonded or not. 0: Pairing request is sent only if the device has not previously bonded 1: Pairing request will be sent even if the device was previously bonded.  The bit 1 decides whether the link has to be re-encrypted after the key exchange. 0: The link will not be re-encrypted with the LTK at the end of the pairing 1: The link will be re-encrypted with the LTK at the end of the pairing

**Table 106. Aci\_Gap\_Send\_Pairing\_Request return parameters**

Parameter	Size	Description
Status	1 byte	0x00: BLE_STATUS_SUCCESS 0x12: BLE_STATUS_INVALID_PARAMETER 0x0C: ERR_COMMAND_DISALLOWED

Event(s) generated:

A command status event is generated when the command is received. If BLE\_STATUS\_SUCCESS is returned in the command status event, a Evt\_Blue\_Pairing\_Complete event is returned after the pairing process is completed.

### 4.3.34 Aci\_Gap\_Resolve\_Private\_Address

**Table 107. Aci\_Gap\_Resolve\_Private\_Address**

Command name	Parameters	Return
Aci_Gap_Resolve_Private_Address (0xFCA0)	Peer address	Status

Description:

This command tries to resolve the address provided with the IRKs present in its database. If the address is resolved successfully with any one of the IRKs present in the database, it returns success and also the corresponding public/static random address stored with the IRK in the database.

**Table 108. Aci\_Gap\_Resolve\_Private\_Address command parameters**

Parameter	Size	Description
Peer address	6 bytes	Address to be resolved.

**Table 109. Aci\_Gap\_Resolve\_Private\_Address return parameters**

Parameter	Size	Description
Status	1 byte	0x00: BLE_STATUS_SUCCESS 0x12: BLE_STATUS_INVALID_PARAMETER 0x48: The address was not resolved
Address	6 bytes	The public or static random address of the peer device, distributed during pairing phase.

Event(s) generated:

A command complete event is generated. If BLE\_STATUS\_SUCCESS is returned in the status byte, then the address is also returned in the event.

#### 4.3.35 Aci\_Gap\_Get\_Bonded\_Devices

**Table 110. Aci\_Gap\_Get\_Bonded\_Devices**

Command name	Parameters	Return
Aci_Gap_Get_Bonded_Devices(0xFCA3)	-	Status Number of addresses to follow List of addr type-address

Description: This command gets the list of the devices which are bonded. It returns the number of addresses and the corresponding address types and values.

**Table 111. Aci\_Gap\_Get\_Bonded\_Devices return parameters**

Parameter	Size	Description
Number of addr, Type-address pairs	1 byte	The number of address type-address pairs to follow

**Table 111. Aci\_Gap\_Get\_Bonded\_Devices return parameters**

Parameter	Size	Description
Address type: Address	7 bytes	The first byte will indicate the address type: 0x00- Public Address 0x01 Random The remaining 6 bytes will contain the address of the bonded device
Status	1 byte	0x00: BLE_STATUS_SUCCESS 0x12: BLE_STATUS_INVALID_PARAMETER 0x0C: ERR_COMMAND_DISALLOWED

Event(s) generated:

A command complete event is returned where the status indicates whether the command was successful. If successful the list of Address\_Type-Address pairs follow as specified above.

### 4.3.36 Aci\_Gap\_Set\_Broadcast\_Mode

**Table 112. Aci\_Gap\_Set\_Broadcast\_Mode**

Command name	Parameters	Return
Aci_Gap_Set_Broadcast_Mode (0xFCA1)	Advertising_Interval_Min Advertising_Interval_Max Advertising_Type Own_Address_Type adv_data_len adv_data Num_WhiteList_Entries whitelist	Status

Description:

This command puts the device into broadcast mode. A privacy enabled device uses either a resolvable private address or a non-resolvable private address as specified in the Own\_Addr\_Type parameter of the command.

Table 113. Aci\_Gap\_Set\_Broadcast\_Mode command parameters

Parameter	Size	Description
Advertising_Interval_Min	2 bytes	Minimum advertising interval. Range: 0x00A0 to 0x4000 Time = N * 0.625 msec Time Range: 100 ms to 10.24 sec
Advertising_Interval_Max	2 bytes	Maximum advertising interval. Range: 0x00A0 to 0x4000 Time = N * 0.625 msec Time Range: 100 ms to 10.24 sec
Advertising_Type	1 byte	0x02: Scannable undirected advertising 0x03: Non connectable undirected advertising
Own_Address_Type	1 byte	If Privacy Disabled: 0x00: Public address 0x01: Static random address If Privacy Enabled: 0x02: Resolvable private address 0x03: Non resolvable private address
adv_data_len	1 byte	Length of the advertising data in the advertising packet
adv_data	adv_data_len bytes	Advertising data used by the device while advertising
Num_WhiteList_Entries	1 byte	Number of devices to be added to whitelist
whitelist	Num_WhiteList_Entries * 7 bytes	The addr_array will contain Num_White_List_Entries number of addresses and their address types that have to be added into the whitelist. The format of the addr_array should be address type followed by address.

Table 114. Aci\_Gap\_Set\_Broadcast\_Mode return parameters

Parameter	Size	Description
Status	1 byte	0x00: BLE_STATUS_SUCCESS 0x12: HCI_INVALID_PARAMETER 0x0C: COMMAND DISALLOWED

Event(s) generated:

A command complete event is returned where the status indicates whether the command was successful.

4.3.37 Aci\_Gap\_Start\_Observation\_Proc

Table 115. Aci\_Gap\_Start\_Observation\_Proc

Command name	Parameters	Return
Aci_Gap_Start_Observation_Proc (0xFCA2)	Scan_Type Scan_Interval Scan_Window Own_Address_Type filterDuplicates	Status

Description:

Starts an Observation procedure, when the device is in Observer Role. The host enables scanning in the controller. The advertising reports are sent to the upper layer using standard LE Advertising Report Event. See Bluetooth Core v4.1, Vol. 2, part E, Ch. 7.7.65.2, LE Advertising Report Event.

Command Parameters:

Table 116. Aci\_Gap\_Start\_Observation\_Proc commands parameters

Parameter	Size	Description
Scan_Interval	2 bytes	Time interval from when the Controller started its last LE scan until it begins the subsequent LE scan. The scan interval should be a number in the range 0x0004 to 0x4000. This corresponds to a time range 2.5 msec to 10240 msec. For a number N, Time = N * 0.625 msec.
Scan_Window	2 bytes	Amount of time for the duration of the LE scan. Scan_Window shall be less than or equal to Scan_Interval. The scan window should be a number in the range 0x0004 to 0x4000. This corresponds to a time range 2.5 msec to 10240 msec. For a number N, Time = N * 0.625 msec.
Scan_Type	1 byte	0x00: Passive scanning 0x01: Active scanning
Own_Address_Type	1 byte	If Privacy is disabled, then the scanner address is set as- 0x00: Public Device address (default) 0x01: Random Device Address If Privacy is enabled, then the scanner address is set as- 0x02 : Private Resolvable address 0x03 : Non Resolvable Address
filterDuplicates	1 byte	0x00: Do not filter the duplicates (default) 0x01: Filter duplicates

Table 117. Aci\_Gap\_Start\_Observation\_Proc return parameters

Parameter	Size	Description
Status	1 byte	0x00: BLE_STATUS_SUCCESS 0x12: BLE_STATUS_INVALID_PARAMETER 0x0C: ERR_COMMAND_DISALLOWED

#### 4.3.38 Aci\_Gap\_Is\_Device\_Bonded

Table 118. Aci\_Gap\_Is\_Device\_Bonded

Command name	Parameters	Return
Aci_Gap_Is_Device_Bonded (0xFCA4)	Peer address type Peer address	Status

Description:

The command finds whether the device, whose address is specified in the command, is bonded. If the device is using a resolvable private address and it has been bonded, then the command will return BLE\_STATUS\_SUCCESS.

Table 119. Aci\_Gap\_Is\_Device\_Bonded command parameters

Parameter	Size	Description
Peer device Address Type	1byte	The address type of the peer device
Peer device address	6 bytes	Address used by the peer device while advertising.

Table 120. Aci\_Gap\_Is\_Device\_Bonded return parameters

Parameter	Size	Description
Status	1 byte	0x00 : BLE_STATUS_SUCCESS 0x12 : HCI_INVALID_PARAMETER 0x5C: DEV_NOT_FOUND_IN_DATABASE 0x49 : FLASH_READ_FAILED

Event(s) generated:

A command complete event is generated. If BLE\_STATUS\_SUCCESS is returned in the status byte of the event then the device has been bonded.

## 4.4 GAP VS Events

Table 121. GAP VS events

Item	Command	CGID	CID	OpCode
1	Evt_Blue_Gap_Limited_Discoverable	0x01	0x00	0x0400
2	Evt_Blue_Gap_Pairing_Complete	0x01	0x01	0x0401
3	Evt_Blue_Pass_Key_Request	0x01	0x02	0x0402
4	Evt_Blue_Authorization_Request	0x01	0x03	0x0403
5	Evt_Blue_Slave_Security_Initiated	0x01	0x04	0x0404
6	Evt_Blue_Gap_Bond_Lost	0x01	0x05	0x0405
7	Evt_Blue_Gap_Procedure_Complete	0x01	0x07	0x0407
8	Evt_Blue_Gap_Addr_Not_Resolved	0x01	0x08	0x0408

### 4.4.1 Evt\_Blue\_Gap\_Limited\_Discoverable

This event is generated by the controller when the limited discoverable mode ends due to timeout. The timeout is 180 seconds.

### 4.4.2 Evt\_Blue\_Gap\_Pairing\_Complete

This event is generated when the pairing process has completed successfully or a pairing procedure timeout has occurred or the pairing has failed. This is to notify the application that we have paired with a remote device so that it can take further actions or to notify that a timeout has occurred so that the upper layer can decide to disconnect the link.

Table 122. Evt\_Blue\_Gap\_Pairing\_Complete

Parameter	Size	Description
Event code	2 bytes	0x0401
Connection handle	2 bytes	Connection handle on which the pairing procedure completed
Status	1 byte	0x00: Pairing success Pairing with a remote device was successful 0x01: Pairing timeout The SMP timeout has elapsed and no further SMP commands will be processed until reconnection 0x02: Pairing failed The pairing failed with the remote device

### 4.4.3 Evt\_Blue\_Pass\_Key\_Request

This event is generated by the Security manager to the application when a passkey is required for pairing. When this event is received, the application has to respond with the Aci\_Gap\_Pass\_Key\_Response command.

Table 123. Evt\_Blue\_Pass\_Key\_Request

Parameter	Size	Description
Event_code	2 bytes	0x0406
Event_type	1 bytes	Type of event: ADV_IND: 0x00 ADV_DIRECT_IND: 0x01 ADV_SCAN_IND: 0x02 ADV_NONCONN_IND: 0x03 SCAN_RSP: 0x04
Peer_Address_Type	1 byte	0x00: Public device address 0x01: Random device address
Peer_Address	6 bytes	Address of the peer device found during scanning.
Length_Data	1 byte	Length of advertising or scan response data
Data	Length_Data bytes	Advertising or scan response data
RSSI	1 byte	Size: 1 Octet (signed integer) Range: $-127 \leq N \leq +20$ Units: dBm 127: RSSI is not available

#### 4.4.4 Evt\_Blue\_Authorization\_Request

This event is generated by the Security manager to the application when the application has set that authorization is required for reading/writing of attributes. This event will be generated as soon as the pairing is complete. When this event is received, Aci\_Gap\_Authorization\_Response command should be used to respond by the application.

**Table 124. Evt\_Blue\_Authorization\_Request**

Parameter	Size	Description
Event code	2 bytes	0x0403
Connection handle	2 bytes	Connection handle for which authorization is being requested

#### 4.4.5 Evt\_Blue\_Slave\_Security\_Initiated

This event is generated when the slave security request is successfully sent to the master.

#### 4.4.6 Evt\_Blue\_Gap\_Bond\_Lost

This event is generated when a pairing request is issued in response to a slave security request from a master which has previously bonded with the slave. When this event is received, the upper layer has to issue the command Aci\_Gap\_Allow\_Rebond in order to allow the slave to continue the pairing process with the master.

#### 4.4.7 Evt\_Blue\_Gap\_Procedure\_Complete

This event is sent by the GAP to the upper layers when a procedure previously started has been terminated by the upper layer or has completed for any other reason

**Table 125. Evt\_Blue\_Gap\_Procedure\_Complete**

Parameter	Size	Description
Event code	2 bytes	0x0407
Procedure_Code	1 byte	0x01: LIMITED_DISCOVERY_PROC 0x02: GENERAL_DISCOVERY_PROC 0x04: NAME_DISCOVERY_PROC 0x08: AUTO_CONNECTION_ESTABLISHMENT_PROC 0x10: GENERAL_CONNECTION_ESTABLISHMENT_PROC 0x20: SELECTIVE_CONNECTION_ESTABLISHMENT_PROC 0x40: DIRECT_CONNECTION_ESTABLISHMENT_PROC

Table 125. Evt\_Blue\_Gap\_Procedure\_Complete (continued)

Parameter	Size	Description
Status	1 byte	0x00: BLE_STATUS_SUCCESS 0x41: BLE_STATUS_FAILED 0x05: ERR_AUTH_FAILURE, Procedure failed due to authentication requirements
Procedure_Specific_Data	1 or more bytes	Procedure Aci_Gap_Name_Discovery_Proc: The name of the peer device if the procedure completed successfully Procedure Aci_Gap_General_Conn_Establishment_Proc: The reconnection address written to the peripheral device if the peripheral is privacy enabled

#### 4.4.8 Evt\_Blue\_Gap\_Addr\_Not\_Resolved

This event is sent only by a privacy enabled Peripheral. The event is sent to the upper layers when the peripheral is unsuccessful in resolving the resolvable address of the peer device after connecting to it.

Table 126. Evt\_Blue\_Gap\_Addr\_Not\_Resolved

Parameter	Size	Description
Event Code	2 bytes	0x0408
Connection Handle	2 bytes	Connection handle for which the private address could not be resolved with any of the stored IRK's.

## 4.5 GATT VS commands and events

### 4.5.1 GATT VS commands

Table 127. GATT VS commands

Item	Command	CGID	CID	OpCode
1	Aci_Gatt_Init	0x02	0x01	0xFD01
2	Aci_Gatt_Add_Service	0x02	0x02	0xFD02
3	Aci_Gatt_Include_Service	0x02	0x03	0xFD03
4	Aci_Gatt_Add_Characteristic	0x02	0x04	0xFD04
5	Aci_Gatt_Add_Char_Desc	0x02	0x05	0xFD05
6	Aci_Gatt_Update_Char_Value	0x02	0x06	0xFD06
7	Aci_Gatt_Del_Characteristic	0x02	0x07	0xFD07
8	Aci_Gatt_Del_Service	0x02	0x08	0xFD08
9	Aci_Gatt_Del_Include_Service	0x02	0x09	0xFD09
10	Aci_Gatt_Set_Event_Mask	0x02	0x0A	0xFD0A

Table 127. GATT VS commands (continued)

Item	Command	CGID	CID	OpCode
11	Aci_Gatt_Exchange_configuration	0x02	0x0B	0xFD0B
12	Aci_Att_Find_Information_Req	0x02	0x0C	0xFD0C
13	Aci_Att_Find_Attr_By_Typ_And_Value_Req	0x02	0x0D	0xFD0D
14	Aci_Att_Find_Attr_By_Typ_And_Value_Req	0x02	0x0E	0xFD0E
15	Aci_Att_Read_Attr_By_Grp_Type_Req	0x02	0x0F	0xFD0F
16	Aci_Att_Prepare_Write_Req	0x02	0x10	0xFD10
17	Aci_Att_Execute_Write_Req	0x02	0x11	0xFD11
18	Aci_Gatt_Disc_All_Prim_Services	0x02	0x12	0xFD12
19	Aci_Gatt_Disc_Prim_serv_By_Uuid	0x02	0x13	0xFD13
20	Aci_Gatt_Find_Included_Services	0x02	0x14	0xFD14
21	Aci_Gatt_Disc_All_Charac_Of_Serv	0x02	0x15	0xFD15
22	Aci_Gatt_Disc_Charac_By_UUID	0x02	0x16	0xFD16
23	Aci_Gatt_Disc_All_Charac_Descriptors	0x02	0x17	0xFD17
24	Aci_Gatt_Read_Charac_Val	0x02	0x18	0xFD18
25	Aci_Gatt_Read_Charac_Using_UUID	0x02	0x19	0xFD19
26	Aci_Gatt_Read_Long_Charac_Val	0x02	0x1A	0xFD1A
27	Aci_Gatt_Read_Multiple_Charac_Values	0x02	0x1B	0xFD1B
28	Aci_Gatt_Write_Charac_Val	0x02	0x1C	0xFD1C
29	Aci_Gatt_Write_Long_Charac_Val	0x02	0x1D	0xFD1D
30	Aci_Gatt_Write_Charac_Reliable	0x02	0x1E	0xFD1E
31	Aci_Gatt_Write_Long_Charac_Descriptor	0x02	0x1F	0xFD1F
32	Aci_Gatt_Read_Long_Charac_Descriptor	0x02	0x20	0xFD20
33	Aci_Gatt_Write_Charac_Descriptor	0x02	0x21	0xFD21
34	Aci_Gatt_Read_Charac_Descriptor	0x02	0x22	0xFD22
35	Aci_Gatt_Write_Without_Response	0x02	0x23	0xFD23
36	Aci_Gatt_Signed_Write_Without_Response	0x02	0x24	0xFD24
37	Aci_Gatt_Confirm_Indication	0x02	0x25	0xFD25
38	Aci_Gatt_Write_Resp	0x02	0x26	0xFD26
39	Aci_Gatt_Allow_Read	0x02	0x27	0xFD27
40	Aci_Gatt_Set_Security_Permission	0x02	0x28	0xFD28
41	Aci_Gatt_Set_Descriptor_Value	0x02	0x29	0xFD29
42	Aci_Gatt_Read_Handle_Value	0x02	0x2A	0xFD2A
43	Aci_Gatt_Read_Handle_Value_Offset	0x02	0x2B	0xFD2B

## 4.5.2 Aci\_Gatt\_Init

**Table 128. Aci\_Gatt\_Init**

Command name	Parameters	Return
Aci_Gatt_Init (0xFD01)		Status

Description:

Initialize the GATT server on the slave device. Initialize all the pools and active nodes. Also it adds GATT service with service changed characteristic. Until this command is issued the GATT channel will not process any commands even if the connection is opened. This command has to be given before using any of the GAP features.

**Table 129. Aci\_Gatt\_Init return parameters**

Parameter	Size	Description
Status	1 byte	0x00: Success 0x47: Error

## 4.5.3 Aci\_Gatt\_Add\_Service

**Table 130. Aci\_Gatt\_Add\_Service**

Command name	Parameters	Return
Aci_Gatt_Add_Service (0xFD02)	Service_UUID_Type Service_UUID Service_Type Max_Attribute_Records	Status Service handle

Description:

Add a service to GATT Server. When a service is created in the server, the host needs to reserve the handle ranges for this service using Max\_Attribute\_Records parameter. This parameter specifies the maximum number of attribute records that can be added to this service (including the service attribute, include attribute, characteristic attribute, characteristic value attribute and characteristic descriptor attribute). Handle of the created service is returned in command complete event.

**Table 131. Aci\_Gatt\_Add\_Service command parameters**

Parameter	Size	Description
Service_UUID_Type	1 byte	0x01: 16-bit UUID 0x02: 128-bit UUID
Service_UUID	2 bytes or 16 bytes	16-bit or 128-bit UUID based on the UUID type field

**Table 131. Aci\_Gatt\_Add\_Service command parameters (continued)**

Parameter	Size	Description
Service_Type	1 byte	0x01: Primary service 0x02: Secondary service
Max_Attribute_Records	1 byte	Maximum number of attribute records that can be added to this service

**Table 132. Aci\_Gatt\_Add\_Service return parameters**

Parameter	Size	Description
Status	1 byte	0x00: Success 0x47: Error 0x1F: Out of memory 0x61: Invalid parameter 0x62: Out of handle 0x64: Insufficient resources
Service handle	2 bytes	Handle of the Service When this service is added to the service, a handle is allocated by the server to this service. Also server allocates a range of handles for this service from Service_Handle to (Service_Handle + Max_Attribute_Records)

Event(s) generated:

When the Aci\_Gatt\_Add\_Service command is completed, controller will generate a command complete event with status and handle for the service as parameters.

#### 4.5.4 Aci\_Gatt\_Include\_Service

**Table 133. Aci\_Gatt\_Include\_Service**

Command name	Parameters	Return
Aci_Gatt_Include_Service (0xFD03)	Service_Handle Include_Start_Handle Include_End_Handle Included_Uuid_Type Included_Uuid	Status Included handle

Description:

Include a service given by Service\_Include\_Handle to another service given by Service\_Handle. Attribute server creates an INCLUDE definition attribute and return the handle of this in command complete event as Included\_Handle.

**Table 134. Aci\_Gatt\_Include\_Service command parameters**

Parameter	Size	Description
Service Handle	2 bytes	Handle of the service to which another service has to be included
Include_Start_Handle	2 bytes	Start handle of the service which has to be included in service
Include_End_Handle	2 bytes	End handle of the service which has to be included in service
Include_UUID_Type	1 byte	0x01: 16-bit UUID 0x02: 128-bit UUID
Include_UUID	2 bytes or 16 bytes	16-bit or 128-bit UUID of the service

**Table 135. Aci\_Gatt\_Include\_Service return parameters**

Parameter	Size	Description
Status	1 byte	0x00: Success 0x47: Error 0x1F: Out of Memory 0x60: Invalid handle 0x61: Invalid parameter 0x62: Out of handle 0x63: Invalid Operation 0x64: Insufficient resources
Included handle	2 bytes	Handle of the included declaration

Event(s) generated:

When the Aci\_Gatt\_Add\_Service command is completed, controller will generate a command complete event with status and handle for the service as parameters.

#### 4.5.5 Aci\_Gatt\_Add\_Characteristic

**Table 136. Aci\_Gatt\_Add\_Characteristic**

Command name	Parameters	Return
Aci_Gatt_Add_Characteristic (0xFD04)	Service_Handle Char_UUID_Type Char_UUID Char_Value_Length Char_Properties Security_Permissions Gatt_Evt_Mask Encryption_Key_Size isVariable	Status Char handle

Description:

Add a characteristic to a service.

**Table 137. Aci\_Gatt\_Add\_Characteristic command parameters**

Parameter	Size	Description
Service_Handle	2 bytes	Handle of the service to which the characteristic has to be added
Char_UUID_Type	1 byte	0x01: 16-bit UUID 0x02: 128-bit UUID
Char_UUID	2 bytes or 16 bytes	16-bit or 128-bit UUID
Char_Value_Length	1 byte	Maximum length of the characteristic value
Char_Properties	1 byte	Bitwise OR values of Characteristic Properties (defined in Volume 3, Section 3.3.3.1 of Bluetooth Specification 4.1)
Security_Permissions	1 byte	0x00: ATTR_PERMISSION_NONE 0x01: Need authentication to read 0x02: Need authorization to read 0x04: Link should be encrypted to read 0x08: Need authentication to write 0x10: Need authorization to write 0x20: Link should be encrypted for write
Gatt_Evt_Mask	1 byte	0x01: GATT_SERVER_ATTR_WRITE The application will be notified when a client writes to this attribute 0x02: GATT_INTIMATE_AND_WAIT_FOR_APPL_AUTH The application will be notified when a write request/write cmd/signed write cmd is received by the server for this attribute 0x04: GATT_INTIMATE_APPL_WHEN_READ_N_WAIT The application will be notified when a read request of any type is got for this attribute
Encryption_Key_Size	1 byte	The minimum encryption key size requirement for this attribute. Valid Range: 7 to 16
isVariable	1 byte	0x00: The attribute has a fixed length value field 0x01: The attribute has a variable length value field

**Table 138. Aci\_Gatt\_Add\_Characteristic return parameters**

Parameter	Size	Description
Status	1 byte	0x00: Success 0x47: Error 0x1F: Out of Memory 0x60: Invalid handle 0x61: Invalid parameter 0x62: Out of handle 0x64: Insufficient resources 0x66: Character Already Exists
Char_Handle	2 bytes	Handle of the Characteristic

Event(s) generated:

When the command is completed, a command complete event will be generated by the controller which carries the status of the command and the handle of the characteristic as parameters.

#### 4.5.6 Aci\_Gatt\_Add\_Char\_Desc

**Table 139. Aci\_Gatt\_Add\_Char\_Desc**

Command name	Parameters	Return
Aci_Gatt_Add_Char_Desc (0xFD05)	Service_Handle Char_Handle Char_Desc_UUID_Type Char_Desc_UUID Char_Desc_Value_Max_Length Char_Desc_Value_Length Char_Desc_Value Security_Permissions Access_Permissions Gatt_Evt_Mask Encryption_Key_Size isVariable	Status Char desc handle

Description:

Add a characteristic descriptor to a service.

Table 140. Aci\_Gatt\_Add\_Char\_Desc command parameters

Parameter	Size	Description
Service_Handle	2 bytes	Handle of the service to which characteristic belongs
Char_Handle	2 bytes	Handle of the characteristic to which description is to be added.
Char_Desc_UUID type	1 byte	0x01: 16-bit UUID (default) 0x02: 128-bit UUID
Char_Desc_UUID	2 bytes or 16 bytes	0x2900: Characteristic Extended Properties Descriptor 0x2901: Characteristic User Descriptor 0x2902: Client configuration descriptor 0x2903: Server configuration descriptor 0x2904: Characteristic presentation format 0x2905: Characteristic aggregated format 0xXXXX: 16/128 bit user specific descriptor
Char_Desc_Value_Max_Length	1 byte	The maximum length of the descriptor value
Char_Desc_Value_Length	1 byte	Current Length of the characteristic descriptor value
Char_Desc_Value	0-N Bytes	Value of the characteristic description
Security_Permissions	1 byte	0x00: No security permission 0x01: Authentication required 0x02: Authorization required 0x04: Encryption required
Access_Permissions	1 byte	0x00: No Access 0x01: Readable 0x02: Writable 0x03: Read/Write
Gatt_Event_Mask	1 byte	0x01: GATT_SERVER_ATTR_WRITE The application will be notified when a client writes to this attribute 0x02: GATT_INTIMATE_AND_WAIT_FOR_APPL_AUTH The application will be notified when a write request/write cmd/signed write cmd is received by the server for this attribute 0x04: GATT_INTIMATE_APPL_WHEN_READ_N_WAIT The application will be notified when a read request of any type is got for this attribute
Encryption_Key_Size	1 byte	The minimum encryption key size requirement for this attribute. Valid Range: 7 to 16
isVariable	1 byte	0x00: The attribute has a fixed length value field 0x01: The attribute has a variable length value field

Table 141. Aci\_Gatt\_Add\_Char\_Desc return parameters

Parameter	Size	Description
Status	1 byte	0x00: Success 0x47: Error 0x1F: Out of Memory 0x60: Invalid handle 0x61: Invalid parameter 0x62: Out of handle 0x63: Invalid Operation 0x64: Insufficient resources
Char_Desc_Handle	2 bytes	Handle of the characteristic descriptor

Event(s) generated:

When this command is completed, a command complete event will be generated by the controller which carries the status of the command and the handle of the characteristic descriptor.

#### 4.5.7 Aci\_Gatt\_Update\_Char\_Value

Table 142. Aci\_Gatt\_Update\_Char\_Value

Command name	Parameters	Return
Aci_Gatt_Update_Char_Value (0xFD06)	Serv_Handle Char_Handle Val_Offset Char_Value_Length Char_Value	Status

Description:

Update a characteristic value in a service.

Table 143. Aci\_Gatt\_Update\_Char\_Value command parameters

Parameter	Size	Description
Serv_Handle	2 bytes	Handle of the service to which characteristic belongs
Char_Handle	2 bytes	Handle of the characteristic
Val_Offset	1 byte	The offset from which the attribute value has to be updated. If this is set to 0, and the attribute value is of variable length, then the length of the attribute will be set to the Char_Value_Length. If the Val_Offset is set to a value greater than 0, then the length of the attribute will be set to the maximum length as specified for the attribute while adding the characteristic.

**Table 143. Aci\_Gatt\_Update\_Char\_Value command parameters (continued)**

Parameter	Size	Description
Char_Value_Length	1 byte	Length of the characteristic value in octets
Char_Value	0-N bytes	Characteristic value

**Table 144. Aci\_Gatt\_Update\_Char\_Value return parameters**

Parameter	Size	Description
Status	1 byte	0x00: Success 0x47: Error 0x60: Invalid handle 0x61: Invalid parameter 0x64: Insufficient resources

Event(s) generated:

When the command has completed, the controller will generate a command complete event.

#### 4.5.8 Aci\_Gatt\_Del\_Characteristic

**Table 145. Aci\_Gatt\_Del\_Characteristic**

Command name	Parameters	Return
Aci_Gatt_Del_Characteristic (0xFD07)	Serv_Handle Char_Handle	Status

Description:

Delete the characteristic specified from the service.

**Table 146. Aci\_Gatt\_Del\_Characteristic command parameters**

Parameter	Size	Description
Serv_Handle	2 bytes	Handle of the service to which characteristic belongs
Char_Handle	2 bytes	Handle of the characteristic to description to be deleted

**Table 147. Aci\_Gatt\_Del\_Characteristic return parameters**

Parameter	Size	Description
Status	1 byte	0x00: Success 0x47: Error 0x60: Invalid handle 0x61: Invalid parameter 0x64: Insufficient resources

Event(s) generated:

When the Aci\_Gatt\_Del\_Characteristic command has completed, the controller will generate a command complete event.

#### 4.5.9 Aci\_Gatt\_Del\_Service

**Table 148. Aci\_Gatt\_Del\_Service**

Command name	Parameters	Return
Aci_Gatt_Del_Service (0xFD08)	Service handle	Status

Description:

Delete the service specified from the GATT server database.

**Table 149. Aci\_Gatt\_Del\_Service command parameters**

Parameter	Size	Description
Service_Handle	2 bytes	Handle of the service to be deleted

**Table 150. Aci\_Gatt\_Del\_Service return parameters**

Parameter	Size	Description
Status	1 byte	0x00: Success 0x47: Error 0x60: Invalid handle 0x61: Invalid parameter 0x64: Insufficient resources

Event(s) generated:

When the command has completed, the controller will generate a command complete event.

#### 4.5.10 Aci\_Gatt\_Del\_Include\_Service

**Table 151. Aci\_Gatt\_Del\_Include\_Service**

Command name	Parameters	Return
Aci_Gatt_Del_Include_Service	Serv_Handle Include_Handle	Status

Description:

Delete the Include definition from the service.

**Table 152. Aci\_Gatt\_Del\_Include\_Service command parameters**

Parameter	Size	Description
Serv_Handle	2 bytes	Handle of the service to which Include definition belongs
Include_Handle	2 bytes	Handle of the Included definition to be deleted

**Table 153. Aci\_Gatt\_Del\_Include\_Service return parameters**

Parameter	Size	Description
Status	1 byte	0x00: Success 0x47: Error 0x60: Invalid handle 0x61: Invalid parameter 0x64: Insufficient resources

Event(s) generated:

When the command has completed, the controller will generate a command complete event.

#### 4.5.11 Aci\_Gatt\_Set\_Event\_Mask

**Table 154. Aci\_Gatt\_Set\_Event\_Mask**

Command name	Parameters	Return
Aci_Gatt_Set_Event_Mask (0xFD0A)	Event mask	Status

Description:

It allows masking events from the GATT. The default configuration is all the events masked.

**Table 155. Aci\_Gatt\_Set\_Event\_Mask command parameters**

Parameter	Size	Description
Event mask	4 bytes	0x00000001: Evt_Blue_Gatt_Attribute_modified 0x00000002: Evt_Blue_Gatt_Procedure_Timeout 0x00000004: Evt_Blue_Att_Exchange_MTU_Resp 0x00000008: Evt_Blue_Att_Find_Information_Resp 0x00000010: Evt_Blue_Att_Find_By_Type_Value_Resp 0x00000020: Evt_Blue_Att_Read_By_Type_Resp 0x00000040: Evt_Blue_Att_Read_Resp 0x00000080: Evt_Blue_Att_Read_Blob_Resp 0x00000100: Evt_Blue_Att_Read_Multiple_Resp 0x00000200: Evt_Blue_Att_Read_By_Group_Resp 0x00000400: Evt_Blue_Att_Write_Resp 0x00000800: Evt_Blue_Att_Prepare_Write_Resp 0x00001000: Evt_Blue_Att_Exec_Write_Resp 0x00002000: Evt_Blue_Gatt_Indication 0x00004000: Evt_Blue_Gatt_notification 0x00008000: Evt_Blue_Gatt_Error_Resp 0x00010000: Evt_Blue_Gatt_Procedure_Complete

**Table 156. Aci\_Gatt\_Set\_Event\_Mask return parameters**

Parameter	Size	Description
Status	1 byte	0x00: Success 0x12: Invalid HCI Command Parameters

Event(s) generated:

A command complete event is generated on the completion of the command.

#### 4.5.12 Aci\_Gatt\_Exchange\_Configuration

**Table 157. Aci\_Gatt\_Exchange\_Configuration**

Command name	Parameters	Return
Aci_Gatt_Exchange_Configuration (0xFD0B)	Connection handle	Status

Description:

Perform an ATT MTU exchange.

**Table 158. Aci\_Gatt\_Exchange\_Configuration command parameters**

Parameter	Size	Description
Connection handle	2 bytes	Connection handle for which the command is givens

**Table 159. Aci\_Gatt\_Exchange\_Configuration return parameters**

Parameter	Size	Description
Status	1 byte	0x00: Success 0x46: Not allowed - If the exchange has already taken place - If GATT is expecting response for previous request - Already a request is in the queue to be sent - Channel not open - Already one GATT procedure is started

Event(s) generated:

A command status event is generated on the receipt of the command. When the ATT MTU exchange procedure is completed, a Evt\_Blue\_Att\_Exchange\_MTU\_Resp event is generated. Also procedure complete event is generated to indicate end of procedure

#### 4.5.13 Aci\_Att\_Find\_Information\_Req

**Table 160. Aci\_Att\_Find\_Information\_Req**

Command name	Parameters	Return
Aci_Att_Find_Information_Req (0xFD0C)	Connection handle Start handle End handle	Status

Description:

Post the Find information request.

**Table 161. Aci\_Att\_Find\_Information\_Req command parameters**

Parameter	Size	Description
Connection handle	2 bytes	Connection handle for which the command is given
Start handle	2 bytes	Starting handle of the range of attributes to be discovered on the server
End handle	2 bytes	Ending handle of the range of attributes to be discovered on the server

**Table 162. Aci\_Att\_Find\_Information\_Req return parameters**

Parameter	Size	Description
Status	1 byte	0x00: Success 0x42: Invalid parameters 0x46: Not allowed - If the exchange has already taken place - If GATT is expecting response for previous request - Already a request is in the queue to be sent - Channel not open - Already one GATT procedure is started

Event(s) generated:

A command status event is generated on the receipt of the command. The responses of the procedure are given through the Evt\_Blue\_Att\_Find\_Information\_Resp event. The end of the procedure is indicated by a Evt\_Blue\_Procedure\_Complete event.

#### 4.5.14 Att\_Find\_By\_Type\_Value\_Req

**Table 163. Att\_Find\_By\_Type\_Value\_Req**

Command name	Parameters	Return
Att_Find_By_Type_Value_Req (0xFD0D)	Connection handle Start handle End handle UUID AttrValLen AttrVal	Status

Description:

Post the Find by type value request.

**Table 164. Aci\_Att\_Find\_Attr\_By\_Typ\_And\_Value\_Req command parameters**

Parameter	Size	Description
Connection handle	2 bytes	Connection handle for which the command is given
Start handle	2 bytes	Starting handle of the range of attributes to be discovered on the server
End handle	2 bytes	Ending handle of the range of attributes to be discovered on the server
UUID	2 bytes	16-bit UUID

**Table 164. Aci\_Att\_Find\_Attr\_By\_Typ\_And\_Value\_Req command parameters**

Parameter	Size	Description
AttrValLen	1 byte	Length of the attribute value to follow. Note: Though the max attribute value that is allowed according to the spec is 512 octets, due to the limitation of the transport layer (command packet max length is 255 bytes) the value is limited to 255 bytes
AttrVal	0-N bytes	Value of the attribute to be matched

**Table 165. Aci\_Att\_Find\_Attr\_By\_Typ\_And\_Value\_Req return parameters**

Parameter	Size	Description
Status	1 byte	0x00: Success 0x42: Invalid parameters 0x46: Not allowed - If the exchange has already taken place - If GATT is expecting response for previous request - Already a request is in the queue to be sent - Channel not open - Already one GATT procedure is started

Event(s) generated:

A command status event is generated on the receipt of the command. The responses of the procedure are given through the Evt\_Blue\_Attr\_Find\_By\_Type\_Value\_Resp event. The end of the procedure is indicated by a Evt\_Blue\_Procedure\_Complete event.

#### 4.5.15 Aci\_Att\_Read\_Attr\_By\_Type\_Req

**Table 166. Aci\_Att\_Read\_Attr\_By\_Type\_Req**

Command name	Parameters	Return
Aci_Att_Read_Attr_By_Type_Req (0xFD0E)	Connection handle Start handle End handle UUID type UUID	Status

Description:

It posts the read by type request.

**Table 167. Aci\_Att\_Read\_Attr\_By\_Type\_Req command parameters**

Parameter	Size	Description
Connection handle	2 bytes	Connection handle for which the command is given
Start handle	2 bytes	Start handle of the range of values to be read on the server
End handle	2 bytes	End handle of the range of values to be read on the server
UUID type	1 byte	0x01: 16-bit UUID 0x02: 128-bit UUID
UUID	2 bytes or 16 bytes	UUID

**Table 168. Aci\_Att\_Find\_Attr\_By\_Typ\_And\_Value\_Req return parameters**

Parameter	Size	Description
Status	1 byte	0x00: Success 0x42: Invalid parameters 0x46: Not allowed - If the exchange has already taken place - If GATT is expecting response for previous request - Already a request is in the queue to be sent - Channel not open - Already one GATT procedure is started

Event(s) generated:

A command status event is generated on the receipt of the command. The responses of the procedure are given through the Evt\_Blue\_Att\_Read\_By\_Type\_Resp event. The end of the procedure is indicated by a Evt\_Blue\_Procedure\_Complete event.

#### 4.5.16 Aci\_Att\_Read\_By\_Group\_Type\_Req

**Table 169. Aci\_Att\_Read\_By\_Group\_Type\_Req**

Command name	Parameters	Return
Aci_Att_Read_By_Group_Type_Req (0xFD0F)	Connection handle Start handle End handle UUID type UUID	Status

Description:

It posts the read by group type request.

**Table 170. Aci\_Att\_Read\_Attr\_By\_Grp\_Type\_Req command parameters**

Parameter	Size	Description
Connection handle	2 bytes	Connection handle for which the command is given
Start handle	2 bytes	Start handle of the range of values to be read on the server
End handle	2 bytes	End handle of the range of values to be read on the server
UUID type	1 byte	0x01: 16-bit UUID 0x02: 128-bit UUID
UUID	2 bytes or 16 bytes	UUID

**Table 171. Aci\_Att\_Read\_Attr\_By\_Grp\_Type\_Req return parameters**

Parameter	Size	Description
Status	1 byte	0x00: Success 0x42: Invalid parameters 0x46: Not allowed - If the exchange has already taken place - If GATT is expecting response for previous request - Already a request is in the queue to be sent - Channel not open - Already one GATT procedure is started

Event(s) generated:

A command status event is generated on the receipt of the command. The responses of the procedure are given through the Evt\_Blue\_Att\_Read\_By\_Group\_Resp event. The end of the procedure is indicated by a Evt\_Blue\_Procedure\_Complete event.

#### 4.5.17 Aci\_Att\_Prepare\_Write\_Req

**Table 172. Aci\_Att\_Prepare\_Write\_Req**

Command name	Parameters	Return
Aci_Att_Prepare_Write_Req (0xFD10)	Connection handle AttrHandle valOffset AttrValLen AttrVal	Status

Description:

This will prepare a write of the attribute value specified.

**Table 173. Aci\_Att\_Prepate\_Write\_Req command parameters**

Parameter	Size	Description
Connection handle	2 bytes	Connection handle for which the command is given
AttrHandle	2 bytes	Handle of the attribute whose value has to be written
valOffset	2 bytes	The offset at which value has to be written
AttrValLen	1 byte	Length of the attribute value to follow
AttrVal	0-N bytes	Value of the attribute to be written

**Table 174. Aci\_Att\_Prepate\_Write\_Req return parameters**

Parameter	Size	Description
Status	1 byte	0x00: Success 0x42: Invalid parameters 0x46: Not allowed - If the exchange has already taken place - If GATT is expecting response for previous request - Already a request is in the queue to be sent - Channel not open - Already one GATT procedure is started

Event(s) generated:

A command status event is generated on the receipt of the command. The responses of the procedure are given through the Evt\_Blue\_Att\_Prepate\_Write\_Resp event. The end of the procedure is indicated by a Evt\_Blue\_Procedure\_Complete event.

#### 4.5.18 Aci\_Att\_Execute\_Write\_Req

**Table 175. Aci\_Gatt\_Execute\_Write\_Req**

Command name	Parameters	Return
Aci_Att_Execute_Write_Req (0xFD11)	Connection handle Execute	Status

Description:

All the writes previously prepared will be executed. They will be either written or discarded as specified by the execute parameter.

**Table 176. Aci\_Att\_Execute\_Write\_Req command parameters**

Parameter	Size	Description
Connection handle	2 bytes	Connection handle for which the command is given
Execute	1 byte	TRUE: Execute the pending prepared writes FALSE: Cancel all pending writes that are prepared

**Table 177. Aci\_Att\_Execute\_Write\_Req return parameters**

Parameter	Size	Description
Status	1 byte	0x00: Success 0x42: Invalid parameters 0x46: Not allowed - If the exchange has already taken place - If ATT is expecting response for previous request - Already a request is in the queue to be sent - Channel not open - Already one GATT procedure is started

Event(s) generated:

A command status event is generated on the receipt of the command. The result of the procedure is given through the Evt\_Blue\_Att\_Exec\_Write\_Resp event. The end of the procedure is indicated by a Evt\_Blue\_Procedure\_Complete event.

#### 4.5.19 Aci\_Gatt\_Disc\_All\_Prim\_Services

**Table 178. Aci\_Gatt\_Disc\_All\_Prim\_Services**

Command name	Parameters	Return
Aci_Gatt_Disc_All_Prim_Services (0xFD12)	Connection handle	Status

Description:

This command will start the GATT client procedure to discover all primary services on the server.

**Table 179. Aci\_Gatt\_Disc\_All\_Prim\_Services command parameters**

Parameter	Size	Description
Connection handle	2 bytes	Connection handle for which the command is given

**Table 180. Aci\_Gatt\_Disc\_All\_Prim\_Services return parameters**

Parameter	Size	Description
Status	1 byte	0x00: Success 0x42: Invalid parameters 0x46: Not allowed - If the exchange has already taken place - If GATT is expecting response for previous request - Already a request is in the queue to be sent - Channel not open - Already one GATT procedure is started

Event(s) generated:

A command status event is generated on the receipt of the command. The responses of the procedure are given through the Evt\_Blue\_Att\_Read\_By\_Group\_Resp event. The end of the procedure is indicated by a Evt\_Blue\_Procedure\_Complete event.

#### 4.5.20 Aci\_Gatt\_Disc\_Prim\_serv\_By\_Uuid

**Table 181. Aci\_Gatt\_Disc\_Prim\_serv\_By\_Uuid**

Command name	Parameters	Return
Aci_Gatt_Disc_Prim_Serv_By_Uuid (0xFD13)	Connection handle UUID type UUID	Status

Description:

This command will start the procedure to discover the primary services of the specified UUID on the server.

**Table 182. Aci\_Gatt\_Disc\_Prim\_serv\_By\_Uuid command parameters**

Parameter	Size	Description
Connection handle	2 bytes	Connection handle for which the command is given
UUID type	1 byte	0x01: 16-bit UUID (default) 0x02: 128-bit UUID
UUID	2 bytes or 16 bytes	UUID

**Table 183. Aci\_Gatt\_Disc\_Prim\_serv\_By\_Uuid return parameters**

Parameter	Size	Description
Status	1 byte	0x00: Success 0x42: Invalid parameters 0x46: Not allowed - If the exchange has already taken place - If GATT is expecting response for previous request - Already a request is in the queue to be sent - Channel not open - Already one GATT procedure is started

Event(s) generated:

A command status event is generated on the receipt of the command. The responses of the procedure are given through the Evt\_Blue\_Att\_Find\_By\_Type\_Value\_Resp event. The end of the procedure is indicated by a Evt\_Blue\_Procedure\_Complete event.

**4.5.21 Aci\_Gatt\_Find\_Included\_Services**

**Table 184. Aci\_Gatt\_Find\_Included\_Services**

Command name	Parameters	Return
Aci_Gatt_Find_Included_Services (0xFD14)	Connection handle Start handle End handle	Status

Description:

Start the procedure to find all included services.

**Table 185. Aci\_Gatt\_Find\_Included\_Services command parameters**

Parameter	Size	Description
Connection handle	2 bytes	Connection handle for which the command is given
Start handle	2 bytes	Start handle of the service
End handle	2 bytes	End handle of the service

**Table 186. Aci\_Gatt\_Find\_Included\_Services return parameters**

Parameter	Size	Description
Status	1 byte	0x00: Success 0x42: Invalid parameters 0x46: Not allowed - If the exchange has already taken place - If GATT is expecting response for previous request - Already a request is in the queue to be sent - Channel not open - Already one GATT procedure is started

Event(s) generated:

A command status event is generated on the receipt of the command. The responses of the procedure are given through the Evt\_Blue\_Att\_Read\_By\_Type\_Resp event. The end of the procedure is indicated by a Evt\_Blue\_Procedure\_Complete event.

**4.5.22 Aci\_Gatt\_Disc\_All\_Charac\_Of\_Serv**

**Table 187. Aci\_Gatt\_Disc\_All\_Charac\_Of\_Serv**

Command name	Parameters	Return
Aci_Gatt_Disc_All_Charac_Of_Serv (0xFD15)	Connection handle Start Attr handle End Attr handle	Status

Description:

Start the procedure to discover all the characteristics of a given service.

**Table 188. Aci\_Gatt\_Disc\_All\_Charac\_Of\_Serv command parameters**

Parameter	Size	Description
Connection handle	2 bytes	Connection handle for which the command is given
Start Attr handle	2 bytes	Start attribute handle of the service
End Attr handle	2 bytes	End attribute handle of the service

Table 189. Aci\_Gatt\_Disc\_All\_Charac\_Of\_Serv return parameters

Parameter	Size	Description
Status	1 byte	0x00: Success 0x42: Invalid parameters 0x46: Not allowed - If the exchange has already taken place - If GATT is expecting response for previous request - Already a request is in the queue to be sent - Channel not open - Already one GATT procedure is started

Event(s) generated:

A command status event is generated on the receipt of the command. When the procedure is completed, a Evt\_Blue\_Gatt\_Procedure\_Cmplt event is generated. Before procedure completion the response packets are given through Evt\_Blue\_Att\_Read\_By\_Type\_Resp event.

#### 4.5.23 Aci\_Gatt\_Disc\_Charac\_By\_UUID

Table 190. Aci\_Gatt\_Disc\_Charac\_By\_UUID

Command name	Parameters	Return
Aci_Gatt_Disc_Charac_By_UUID (0xFD16)	Connection handle Start Attr handle End Attr handle UUID type UUID	Status

Description:

Start the procedure to discover all the characteristics specified by the UUID.

Table 191. Aci\_Gatt\_Disc\_Charac\_By\_UUID command parameters

Parameter	Size	Description
Connection handle	2 bytes	Connection handle for which the command is given
Start Attr handle	2 bytes	Start attribute handle of the service
End Attr handle	2 bytes	End attribute handle of the service
UUID type	1 byte	0x01: 16-bit UUID (default) 0x02: 128-bit UUID
UUID	2 bytes or 16 bytes	UUID

**Table 192. Aci\_Gatt\_Disc\_Charac\_By\_UUID return parameters**

Parameter	Size	Description
Status	1 byte	0x00: Success 0x42: Invalid parameters 0x46: Not allowed - If the exchange has already taken place - If GATT is expecting response for previous request - Already a request is in the queue to be sent - Channel not open - Already one GATT procedure is started

Event(s) generated:

A command status event is generated on the receipt of the command. When the procedure is completed, a Evt\_Blue\_Gatt\_Procedure\_Cmplt event is generated. Before procedure completion the response packets are given through Evt\_Blue\_Gatt\_Disc\_Read\_Charac\_By\_UUID\_Resp event.

#### 4.5.24 Aci\_Gatt\_Disc\_All\_Charac\_Descriptors

**Table 193. Aci\_Gatt\_Disc\_All\_Charac\_Descriptors**

Command name	Parameters	Return
Aci_Gatt_Disc_All_Charac_Descriptors (0xFD17)	Connection handle charValHandle EndHandle	Status

Description:

Start the procedure to discover all characteristic descriptors on the server.

**Table 194. Aci\_Gatt\_Disc\_All\_Charac\_Descriptors command parameters**

Parameter	Size	Description
Connection handle	2 bytes	Connection handle for which the command is given
charValHandle	2 bytes	Handle of the characteristic value
EndHandle	2 bytes	End handle of the characteristic

**Table 195. Aci\_Gatt\_Disc\_All\_Charac\_Descriptors return parameters**

Parameter	Size	Description
Status	1 byte	0x00: Success 0x42: Invalid parameters 0x46: Not allowed - If the exchange has already taken place - If GATT is expecting response for previous request - Already a request is in the queue to be sent - Channel not open - Already one GATT procedure is started

Event(s) generated:

A command status event is generated on the receipt of the command. When the procedure is completed, a Evt\_Blue\_Gatt\_Procedure\_Cmplt event is generated. Before procedure completion the response packets are given through Evt\_Blue\_Att\_Find\_Info\_Resp event.

**4.5.25 Aci\_Gatt\_Read\_Charac\_Val**

**Table 196. Aci\_Gatt\_Read\_Charac\_Val**

Command name	Parameters	Return
Aci_Gatt_Read_Charac_Val (0xFD18)	Connection handle attrHandle	Status

Description:

Start the procedure to read the attribute value.

**Table 197. Aci\_Gatt\_Read\_Charac\_Val command parameters**

Parameter	Size	Description
Connection handle	2 bytes	Connection handle for which the command is given
attrHandle	2 bytes	Handle of the characteristic to be read

**Table 198. Aci\_Gatt\_Read\_Charac\_Val return parameters**

Parameter	Size	Description
Status	1 byte	0x00: Success 0x42: Invalid parameters 0x46: Not allowed - If the exchange has already taken place - If GATT is expecting response for previous request - Already a request is in the queue to be sent - Channel not open - Already one GATT procedure is started

Event(s) generated:

A command status event is generated on the receipt of the command. When the procedure is completed, a Evt\_Blue\_Gatt\_Procedure\_Cmplt event is generated. Before procedure completion the response packet is given through Evt\_Blue\_Gatt\_Disc\_Read\_Charac\_By\_UUID\_Resp event.

#### 4.5.26 Aci\_Gatt\_Read\_Charac\_Using\_UUID

**Table 199. Aci\_Gatt\_Read\_Charac\_Using\_UUID**

Command name	Parameters	Return
Aci_Gatt_Read_Charac_Using_UUID (0xFD19)	Connection handle Start handle End handle UUID type UUID	Status

Description:

Start the procedure to read all the characteristics specified by the UUID.

**Table 200. Aci\_Gatt\_Read\_Charac\_Using\_UUID command parameters**

Parameter	Size	Description
Connection handle	2 bytes	Connection handle for which the command is given
Start handle	2 bytes	Starting handle of the range to be searched
End handle	2 bytes	End handle of the range to be searched
UUID type	1 byte	0x01: 16-bit UUID (default) 0x02: 128-bit UUID
UUID	2 bytes or 16 bytes	UUID

**Table 201. Aci\_Gatt\_Read\_Charac\_Using\_UUID return parameters**

Parameter	Size	Description
Status	1 byte	0x00: Success 0x42: Invalid parameters 0x46: Not allowed - If the exchange has already taken place - If GATT is expecting response for previous request - Already a request is in the queue to be sent - Channel not open - Already one GATT procedure is started

Event(s) generated:

A command status event is generated on the receipt of the command. When the procedure is completed, a Evt\_Blue\_Gatt\_Procedure\_Cmplt event is generated. Before procedure completion the response packets are given through Evt\_Blue\_Gatt\_Disc\_Read\_Charac\_By\_UUID\_Resp event.

#### 4.5.27 Aci\_Gatt\_Read\_Long\_Charac\_Val

**Table 202. Aci\_Gatt\_Read\_Long\_Charac\_Val**

Command name	Parameters	Return
Aci_Gatt_Read_Long_Charac_Val (0xFD1A)	Connection handle attrHandle valOffset	Status

Description:

Start the procedure to read a long characteristic value.

**Table 203. Aci\_Gatt\_Read\_Long\_Charac\_Val command parameters**

Parameter	Size	Description
Connection handle	2 bytes	Connection handle for which the command is given
attrHandle	1 byte	Handle of the characteristic to be read
valOffset	2 bytes	Offset from which the value needs to be read

**Table 204. Aci\_Gatt\_Read\_Long\_Charac\_Val command return parameters**

Parameter	Size	Description
Status	1 byte	0x00: Success 0x42: Invalid parameters 0x46: Not allowed - If the exchange has already taken place - If GATT is expecting response for previous request - Already a request is in the queue to be sent - Channel not open - Already one GATT procedure is started

Event(s) generated:

A command status event is generated on the receipt of the command. When the procedure is completed, a Evt\_Blue\_Gatt\_Procedure\_Cmplt event is generated. Before procedure completion the response packets are given through Evt\_Blue\_Att\_Read\_Blob\_Resp event.

#### 4.5.28 Aci\_Gatt\_Read\_Multiple\_Charac\_Values

**Table 205. Aci\_Gatt\_Read\_Multiple\_Charac\_Values**

Command name	Parameters	Return
Aci_Gatt_Read_Multiple_Charac_Values (0xFD1B)	Connection handle numHandles setOfHandles	Status

Description:

Post the Read Multiple request.

**Table 206. Aci\_Gatt\_Read\_Multiple\_Charac\_Values command parameters**

Parameter	Size	Description
Connection handle	2 bytes	Connection handle for which the command is given
numHandles	1 byte	The number of handles for which the value has to be read
setOfHandles	numHandle * 2 bytes	The handles for which the attribute value has to be read

**Table 207. Aci\_Gatt\_Read\_Multiple\_Charac\_Values return parameters**

Parameter	Size	Description
Status	1 byte	0x00: Success 0x42: Invalid parameters 0x46: Not allowed - If the exchange has already taken place - If GATT is expecting response for previous request - Already a request is in the queue to be sent - Channel not open - Already one GATT procedure is started

Event(s) generated:

A command status event is generated on the receipt of the command. When the procedure is completed, a Evt\_Blue\_Gatt\_Procedure\_Cmplt event is generated. Before procedure completion the response packets are given through Evt\_Blue\_Att\_Read\_Multiple\_Resp event.

4.5.29 Aci\_Gatt\_Write\_Charac\_Val

Table 208. Aci\_Gatt\_Write\_Charac\_Val

Command name	Parameters	Return
Aci_Gatt_Write_Charac_Val (0xFD1C)	Connection handle attrHandle ValLen AttrVal	Status

Description:

Start the procedure to write a characteristic value.

Table 209. Aci\_Gatt\_Write\_Charac\_Val command parameters

Parameter	Size	Description
Connection handle	2 bytes	Connection handle for which the command is given
attrHandle	2 bytes	Handle of the characteristic to be written
ValLen	1 byte	Length of the value to be written
AttrVal	0-N bytes	Value to be written

Table 210. Aci\_Gatt\_Write\_Charac\_Val return parameters

Parameter	Size	Description
Status	1 byte	0x00: Success 0x42: Invalid parameters 0x46: Not allowed - If the exchange has already taken place - If GATT is expecting response for previous request - Already a request is in the queue to be sent - Channel not open - Already one GATT procedure is started

Event(s) generated:

A command status event is generated on the receipt of the command. When the procedure is completed, a Evt\_Blue\_Gatt\_Procedure\_Cmpl event is generated.

4.5.30 Aci\_Gatt\_Write\_Long\_Charac\_Val

Table 211. Aci\_Gatt\_Write\_Long\_Charac\_Val

Command name	Parameters	Return
Aci_Gatt_Write_Long_Charac_Val (0xFD1D)	Connection handle AttrHandle ValOffset ValLen AttrVal	Status

Description:

Start the procedure to write a long characteristic value.

Table 212. Aci\_Gatt\_Write\_Long\_Charac\_Val command parameters

Parameter	Size	Description
Connection handle	2 bytes	Connection handle for which the command is given
AttrHandle	2 bytes	Handle of the attribute to be written
ValOffset	2 bytes	Offset at which the attribute has to be written
ValLen	1 byte	Length of the value to be written
AttrVal	0-N bytes	Value to be written

Table 213. Aci\_Gatt\_Write\_Long\_Charac\_Val return parameters

Parameter	Size	Description
Status	1 byte	0x00: Success 0x42: Invalid parameters 0x46: Not allowed - If the exchange has already taken place - If GATT is expecting response for previous request - Already a request is in the queue to be sent - Channel not open - Already one GATT procedure is started

Event(s) generated:

A command status event is generated on the receipt of the command. When the procedure is completed, a Evt\_Blue\_Gatt\_Procedure\_Cmplt event is generated. Before procedure completion the response packets are given through Evt\_Blue\_Att\_Prepare\_Write\_Resp and Evt\_Blue\_Att\_Exec\_Write\_Resp events.

4.5.31 Aci\_Gatt\_Write\_Charac\_Reliable

Table 214. Aci\_Gatt\_Write\_Charac\_Reliable

Command name	Parameters	Return
Aci_Gatt_Write_Charac_Reliable (0xFD1E)	Connection handle AttrHandle ValOffset ValLen AttrVal	Status

Description:

Start the procedure to write a characteristic reliably.

Table 215. Aci\_Gatt\_Write\_Charac\_Reliable command parameters

Parameter	Size	Description
Connection handle	2 bytes	Connection handle for which the command is given
AttrHandle	2 bytes	Handle of the attribute to be written
ValOffset	2 bytes	Offset at which the attribute has to be written
ValLen	1 byte	Length of the value to be written
AttrVal	0-N bytes	Value to be written

Table 216. Aci\_Gatt\_Write\_Charac\_Reliable return parameters

Parameter	Size	Description
Status	1 byte	0x00: Success 0x42: Invalid parameters 0x46: Not allowed - If the exchange has already taken place - If GATT is expecting response for previous request - Already a request is in the queue to be sent - Channel not open - Already one GATT procedure is started

Event(s) generated:

A command status event is generated on the receipt of the command. When the procedure is completed, a Evt\_Blue\_Gatt\_Procedure\_Cmplt event is generated. Before procedure completion the response packets are given through Evt\_Blue\_Att\_Prepate\_Write\_Resp and Evt\_Blue\_Att\_Exec\_Write\_Resp events.

### 4.5.32 Aci\_Gatt\_Write\_Long\_Charac\_Descriptor

**Table 217. Aci\_Gatt\_Write\_Long\_Charac\_Descriptor**

Command name	Parameters	Return
Aci_Gatt_Write_Long_Charac_Descriptor (0xFD1F)	Connection handle attrHandle ValOffset ValLen AttrVal	Status

Description:

Start the procedure to write a long characteristic descriptor.

**Table 218. Aci\_Gatt\_Write\_Long\_Charac\_Descriptor command parameters**

Parameter	Size	Description
Connection handle	2 bytes	Connection handle for which the command is given
attrHandle	2 bytes	Handle of the attribute to be written
ValOffset	2 bytes	Offset at which the attribute has to be written
ValLen	1 byte	Length of the value to be written
AttrVal	0-N bytes	Value to be written

**Table 219. Aci\_Gatt\_Write\_Long\_Charac\_Descriptor return parameters**

Parameter	Size	Description
Status	1 byte	0x00: Success 0x42: Invalid parameters 0x46: Not allowed - If the exchange has already taken place - If GATT is expecting response for previous request - Already a request is in the queue to be sent - Channel not open - Already one GATT procedure is started

Event(s) generated:

A command status event is generated on the receipt of the command. When the procedure is completed, a Evt\_Blue\_Gatt\_Procedure\_Cmplt event is generated. Before procedure completion the response packets are given through and Evt\_Blue\_Att\_Prepare\_Write\_Resp and Evt\_Blue\_Att\_Exec\_Write\_Resp event.

### 4.5.33 Aci\_Gatt\_Read\_Long\_Charac\_Descriptor

**Table 220. Aci\_Gatt\_Read\_Long\_Charac\_Descriptor**

Command name	Parameters	Return
Aci_Gatt_Read_Long_Charac_Descriptor (0xFD20)	Connection handle attrHandle valOffset	Status

Description:

Start the procedure to read a long characteristic value.

**Table 221. Aci\_Gatt\_Read\_Long\_Charac\_Descriptor command parameters**

Parameter	Size	Description
Connection handle	2 bytes	Connection handle for which the command is given
attrHandle	2 bytes	Handle of the characteristic descriptor
ValOffset	2 bytes	Offset from which the value needs to be read

**Table 222. Aci\_Gatt\_Read\_Long\_Charac\_Descriptor return parameters**

Parameter	Size	Description
Status	1 byte	0x00: Success 0x42: Invalid parameters 0x46: Not allowed - If the exchange has already taken place - If GATT is expecting response for previous request - Already a request is in the queue to be sent - Channel not open - Already one GATT procedure is started

Event(s) generated:

A command status event is generated on the receipt of the command. When the procedure is completed, a Evt\_Blue\_Gatt\_Procedure\_Cmplt event is generated. Before procedure completion the response packets are given through Evt\_Blue\_Att\_Read\_Blob\_Resp event.

### 4.5.34 Aci\_Gatt\_Write\_Charac\_Descriptor

**Table 223. Aci\_Gatt\_Write\_Charac\_Descriptor**

Command name	Parameters	Return
Aci_Gatt_Write_Charac_Descriptor (0xFD21)	Connection handle AttrHandle ValLen AttrVal	Status

Description:

Start the procedure to write a characteristic value.

**Table 224. Aci\_Gatt\_Write\_Charac\_Descriptor command parameters**

Parameter	Size	Description
Connection handle	2 bytes	Connection handle for which the command is given
AttrHandle	2 bytes	Handle of the attribute to be written
ValLen	1 byte	Length of the value to be written
AttrVal	0-N bytes	Value to be written

**Table 225. Aci\_Gatt\_Write\_Charac\_Descriptor return parameters**

Parameter	Size	Description
Status	1 byte	0x00: Success 0x42: Invalid parameters 0x46: Not allowed - If the exchange has already taken place - If GATT is expecting response for previous request - Already a request is in the queue to be sent - Channel not open - Already one GATT procedure is started

Event(s) generated:

A command status event is generated on the receipt of the command. When the procedure is completed, a Evt\_Blue\_Gatt\_Procedure\_Cmplt event is generated.

### 4.5.35 Aci\_Gatt\_Read\_Charac\_Descriptor

**Table 226. Aci\_Gatt\_Read\_Charac\_Descriptor**

Command name	Parameters	Return
Aci_Gatt_Read_Charac_Descriptor (0xFD22)	Connection handle AttrHandle	Status

Description:

Start the procedure to read the descriptor specified.

**Table 227. Aci\_Gatt\_Read\_Charac\_Descriptor command parameters**

Parameter	Size	Description
Connection handle	2 bytes	Connection handle for which the command is given
AttrHandle	2 bytes	Handle of the descriptor to be read

**Table 228. Aci\_Gatt\_Read\_Charac\_Descriptor return parameters**

Parameter	Size	Description
Status	1 byte	0x00: Success 0x42: Invalid parameters 0x46: Not allowed - If the exchange has already taken place - If GATT is expecting response for previous request - Already a request is in the queue to be sent - Channel not open - Already one GATT procedure is started

Event(s) generated:

A command status event is generated on the receipt of the command. When the procedure is completed, a Evt\_Blue\_Gatt\_Procedure\_Cmpl event is generated. Before procedure completion the response packet is given through Evt\_Blue\_Attr\_Read\_Resp event.

### 4.5.36 Aci\_Gatt\_Write\_Without\_Response

**Table 229. Aci\_Gatt\_Write\_Without\_Response**

Command name	Parameters	Return
Aci_Gatt_Write_Without_Response (0xFD23)	Connection handle AttrHandle ValLen AttrVal	Status

Description:

Start the procedure to write a characteristic value without waiting for any response from the server.

**Table 230. Aci\_Gatt\_Write\_Without\_Response command parameters**

Parameter	Size	Description
Connection handle	2 bytes	Connection handle for which the command is given
AttrHandle	2 bytes	Handle of the attribute to be written
ValLen	1 byte	Length of the value to be written
AttrVal	0-N bytes	Value to be written

**Table 231. Aci\_Gatt\_Write\_Without\_Response return parameters**

Parameter	Size	Description
Status	1 byte	0x00: Success 0x42: Invalid parameters 0x46: Not allowed - If the exchange has already taken place - Already a request is in the queue to be sent - Channel not open - Already one GATT procedure is started

Event(s) generated:

A command complete event is generated when this command is processed.

#### 4.5.37 Aci\_Gatt\_Signed\_Write\_Without\_Response

**Table 232. Aci\_Gatt\_Signed\_Write\_Without\_Response**

Command name	Parameters	Return
Aci_Gatt_Signed_Write_Without_Response (0xFD24)	Connection handle AttrHandle ValLen AttrVal	Status

Description:

Start the procedure to write a characteristic value with an authentication signature without waiting for any response from the server. It cannot be used when the link is encrypted.

**Table 233. Aci\_Gatt\_Signed\_Write\_Without\_Response command parameters**

Parameter	Size	Description
Connection handle	2 bytes	Connection handle for which the command is given
AttrHandle	2 bytes	Handle of the attribute to be written
ValLen	1 byte	Length of the value to be written
AttrVal	0-N bytes	Value to be written

**Table 234. Aci\_Gatt\_Signed\_Write\_Without\_Response return parameters**

Parameter	Size	Description
Status	1 byte	0x00: Success 0x42: Invalid parameters 0x46: Not allowed - If the exchange has already taken place - Already a request is in the queue to be sent - Channel not open - Already one GATT procedure is started

Event(s) generated:

A command complete event is generated when this command is processed.

#### 4.5.38 Aci\_Gatt\_Confirm\_Indication

**Table 235. Aci\_Gatt\_Confirm\_Indication**

Command name	Parameters	Return
Aci_Gatt_Confirm_Indication (0xFD25)	Connection handle	Status

Description:

Allow application to confirm indication. This command has to be sent when the application receives the event Evt\_Blue\_Gatt\_Indication.

**Table 236. Aci\_Gatt\_Confirm\_Indication command parameters**

Parameter	Size	Description
Connection handle	2 bytes	Connection handle for which the command is given

**Table 237. Aci\_Gatt\_Confirm\_Indication return parameters**

Parameter	Size	Description
Status	1 byte	0x00: Success 0x46: Not allowed - If the exchange has already taken place - Channel not open

Event(s) generated:

A command complete event is generated when this command is processed.

#### 4.5.39 Aci\_Gatt\_Write\_Resp

**Table 238. Aci\_Gatt\_Write\_Resp**

Command name	Parameters	Return
Aci_Gatt_Write_Resp (0xFD26)	Connection handle Attribute handle Status Error Code Att_Val_Len Att_Val	Status

Description:

This command has to be sent by the application when it receives the Evt\_Blue\_Gatt\_Write\_Permit\_req. If the write can be allowed, then the status and error code has to be set to 0. If the write cannot be allowed, then the status has to be set to 1 and the error code has to be set to the error code that has to be passed to the client.

**Table 239. Aci\_Gatt\_Write\_Resp command parameters**

Parameter	Size	Description
Connection handle	2 bytes	Connection handle for which the command is given
Attribute handle	2 bytes	Handle of the attribute that was passed in the event Evt_Blue_Gatt_Write_Permit_req
Status	1 byte	0x00: The value can be written to the attribute specified by handle 0x01: The value should not be written to the attribute specified by the handle
Error Code	1 byte	The error code that has to be passed to the client in case the write has to be rejected
Att_Val_Len	1 byte	Length of the value to be written as passed in the event Evt_Blue_Gatt_Write_Permit_req
Att_Val	0-N bytes	Value as passed in the event Evt_Blue_Gatt_Write_Permit_req.

**Table 240. Aci\_Gatt\_Write\_Resp return parameters**

Parameter	Size	Description
Status	1 byte	0x00: Success 0x46: Not allowed The command is not allowed in the current state of stack

Event(s) generated:

A command complete event is generated when this command is processed.

#### 4.5.40 Aci\_Gatt\_Allow\_Read

**Table 241. Aci\_Gatt\_Allow\_Read**

Command name	Parameters	Return
Aci_Gatt_Allow_Read (0xFD27)	Connection handle	Status

Description:

The application has to send this command when it receives the Evt\_Blue\_Gatt\_Read\_Permit\_Req or Evt\_Blue\_Gatt\_Read\_Multi\_Permit\_Req. This command indicates to the stack that the response can be sent to the client. So if the application wishes to update any of the attributes before they are read by the client, it has to update the characteristic values using the Aci\_Gatt\_Update\_Charac\_Value and then give this command. The application should perform the required operations within 30 seconds. Otherwise the GATT procedure will be timeout.

**Table 242. Aci\_Gatt\_Allow\_Read command parameters**

Parameter	Size	Description
Connection handle	2 bytes	Connection handle for which the command is given

**Table 243. Aci\_Gatt\_Allow\_Read return parameters**

Parameter	Size	Description
Status	1 byte	0x00: Success 0x46: Not allowed The command is not expected in the current state of the stack

Event(s) generated:

A command complete event is generated when this command is processed.

#### 4.5.41 Aci\_Gatt\_Set\_Security\_Permission

**Table 244. Aci\_Gatt\_Set\_Security\_Permission**

Command name	Parameters	Return
Aci_Gatt_Set_Security_Permission (0xFD28)	Service handle Attr handle Security permission	Status

Description:

This command sets the security permission for the attribute handle specified. Currently the setting of security permission is allowed only for client configuration descriptor.

**Table 245. Aci\_Gatt\_Set\_Security\_Permission command parameters**

Parameter	Size	Description
Service handle	2 bytes	Handle of the service which contains the attribute whose security permission has to be modified.
Attr handle	2 bytes	Handle of the attribute whose security permission has to be modified.
Security permission	1 byte	0x00: ATTR_PERMISSION_NONE 0x01: ATTR_PERMISSION_AUTHEN_READ 0x02: ATTR_PERMISSION_AUTHOR_READ 0x04: ATTR_PERMISSION_ENCRY_READ 0x08: ATTR_PERMISSION_AUTHEN_WRITE 0x10: ATTR_PERMISSION_AUTHOR_WRITE 0x20: ATTR_PERMISSION_ENCRY_WRITE

**Table 246. Aci\_Gatt\_Set\_Security\_Permission return parameters**

Parameter	Size	Description
Status	1 byte	0x00: Success 0x12: Invalid parameters 0x41: Failed Could not find the handle specified or the handle is not of a client configuration descriptor

Event(s) generated:

A command complete event is generated when this command is processed.

4.5.42 Aci\_Gatt\_Set\_Descriptor\_Value

Table 247. Aci\_Gatt\_Set\_Descriptor\_Value

Command name	Parameters	Return
Aci_Gatt_Set_Descriptor_Value (0xFD29)	Service_Handle Char_Handle Desc_Handle val_offset desc_val_len desc_val	Status

Description:

This command sets the value of the descriptor specified by Desc\_handle.

Table 248. Aci\_Gatt\_Set\_Descriptor\_Value command parameters

Parameter	Size	Description
Service handle	2 bytes	Handle of the service which contains the descriptor.
Char handle	2 bytes	Handle of the characteristic which contains the descriptor.
Desc handle	2 bytes	Handle of the descriptor whose value has to be set.
val_offset	2 bytes	Offset from which the descriptor value has to be updated.
desc_val_len	2 bytes	Length of the descriptor value
desc_val	0-N bytes	Descriptor value

Table 249. Aci\_Gatt\_Set\_Descriptor\_Value return parameters

Parameter	Size	Description
Status	1 byte	0x00: Success 0x47: Error 0x60: Invalid handle 0x61: Invalid parameter

Event(s) generated:

A command complete event is generated when this command is processed.

#### 4.5.43 Aci\_Gatt\_Read\_Handle\_Value

**Table 250. Aci\_Gatt\_Read\_Handle\_Value**

Command name	Parameters	Return
Aci_Gatt_Read_Handle_Value (0xFD2A)	Attribute handle	Status value

Description:

Reads the value of the attribute handle specified.

**Table 251. Aci\_Gatt\_Read\_Handle\_Value command parameters**

Parameter	Size	Description
Attribute handle	2 bytes	Handle of the attribute to read

**Table 252. Aci\_Gatt\_Read\_Handle\_Value return parameters**

Parameter	Size	Description
Status	1 byte	0x00: BLE_STATUS_SUCCESS 0x41: BLE_STATUS_FAILED 0x12: ERR_INVALID_HCI_CMD_PARAMS
Length	2 bytes	Length of the value
Value	0-N bytes	Value read. The length is as specified in the Length field.

Event(s) generated:

A command complete event is returned when this command is received. The event will contain the length and value of the attribute handle specified.

#### 4.5.44 Aci\_Gatt\_Read\_Handle\_Value\_Offset

**Table 253. Aci\_Gatt\_Read\_Handle\_Value\_Offset**

Command name	Parameters	Return
Aci_Gatt_Read_Handle_Value_Offset (0xFD2B)	Attribute Handle Offset	Status Attribute value Length Attribute value

Description:

The command returns the value of the attribute handle from the specified offset. If the length to be returned is greater than 128, then only 128 bytes are returned. The application should send this command with incremented offsets until it gets an error with the offset it specified or the number of bytes of attribute value returned is less than 128.

**Table 254. Aci\_Gatt\_Read\_Handle\_Value\_Offset command parameters**

Parameter	Size	Description
Attribute handle	2 bytes	The Attribute Handle to be read
Offset	1 byte	The offset specifies the position from which the value needs to be read.

**Table 255. Aci\_Gatt\_Read\_Handle\_Value\_Offset return parameters**

Parameter	Size	Description
Status	1 byte	0x00 : Success 0x63 : Status Invalid Operation 0x12 : HCI_Invalid Parameters 0x41 : BLE_Status_Failed
Data length of the Attribute	1 bytes	Length of the attribute value to follow
Data Length bytes of the Attribute Value	Data length bytes	Attribute value

Event(s) generated:

On the completion of the command, a command complete event is generated. The status indicates success or failure. If the status is success, then the event data contains the data length of the attribute value followed by the attribute value.

## 4.6 GATT VS events

Table 256. GATT VS events

Item	Event	EGID	EID	ECODE
1	Evt_Blue_Gatt_Attribute_modified	0x03	0x01	0x0C01
2	Evt_Blue_Gatt_Procedure_Timeout	0x03	0x02	0x0C02
3	Evt_Blue_Att_Exchange_MTU_Resp	0x03	0x03	0x0C03
4	Evt_Blue_Att_Find_Information_Resp	0x03	0x04	0x0C04
5	Evt_Blue_Att_Find_By_Type_Value_Resp	0x03	0x05	0x0C05
6	Evt_Blue_Att_Read_By_Type_Resp	0x03	0x06	0x0C06
7	Evt_Blue_Att_Read_Resp	0x03	0x07	0x0C07
8	Evt_Blue_Att_Read_Blob_Resp	0x03	0x08	0x0C08
9	Evt_Blue_Att_Read_Multiple_Resp	0x03	0x09	0x0C09
10	Evt_Blue_Att_Read_By_Group_Type_Resp	0x03	0x0A	0x0C0A
11	Evt_Blue_Att_Write_Resp	0x03	0x0B	0x0C0B
12	Evt_Blue_Att_Prepare_Write_Resp	0x03	0x0C	0x0C0C
13	Evt_Blue_Att_Exec_Write_Resp	0x03	0x0D	0x0C0D
14	Evt_Blue_Gatt_Indication	0x03	0x0E	0x0C0E
15	Evt_Blue_Gatt_notification	0x03	0x0F	0x0C0F
16	Evt_Blue_Gatt_Procedure_Complete	0x03	0x10	0x0C10
17	Evt_Blue_Gatt_Error_Response	0x03	0x11	0x0C11
18	Evt_Blue_Gatt_Disc_Read_Charac_By_UUID_Resp	0x03	0x12	0x0C12
19	Evt_Blue_Gatt_Write_Permit_req	0x03	0x13	0x0C13
20	Evt_Blue_Gatt_Read_Permit_Req	0x03	0x14	0x0C14
21	Evt_Blue_Gatt_Read_Multi_Permit_Req	0x03	0x15	0x0C15

### 4.6.1 Evt\_Blue\_Gatt\_Attribute\_modified

This event is generated to the application by the GATT server when a client modifies any attribute on the server.

Table 257. Evt\_Blue\_Gatt\_Attribute\_modified

Parameter	Size	Description
Event code	2 bytes	The event code of the vendor specific event
Connection handle	2 bytes	The connection handle which modified the attribute
Attribute handle	2 bytes	Handle of the attribute that was modified
data_length	1 byte	The length of the data to follow

Table 257. Evt\_Blue\_Gatt\_Attribute\_modified (continued)

Parameter	Size	Description
Offset	2 bytes	The Offset in from which the write has been performed by the peer device
Attribute value	0-N bytes	The modified data

#### 4.6.2 Evt\_Blue\_Gatt\_Procedure\_Timeout

This event is generated by the client/server to the application on a GATT timeout (30 seconds).

Table 258. Evt\_Blue\_Gatt\_Procedure\_Timeout

Parameter	Size	Description
Event code	2 bytes	The event code of the vendor specific event
Connection handle	2 bytes	The connection handle on which the gatt procedure has timed out

#### 4.6.3 Evt\_Blue\_Gatt\_Procedure\_Complete

This event is generated when a GATT client procedure completes either with error or successfully.

Table 259. Evt\_Blue\_Gatt\_Procedure\_Complete

Parameter	Size	Description
Event code	2 bytes	The event code of the vendor specific event
Connection handle	2 bytes	The connection handle which the gatt procedure has completed
data_len	1 byte	Will always be 1 byte.
data buffer	0-N bytes	Indicates whether the procedure completed with error (BLE_STATUS_FAILED) or was successful (BLE_STATUS_SUCCESS).

#### 4.6.4 Evt\_Blue\_Gatt\_Disc\_Read\_Charac\_By\_UUID\_Resp

This event can be generated during a "Discover Characteristics By UUID" procedure or a "Read using Characteristic UUID" procedure.

The attribute value will be a service declaration as defined in Bluetooth Core v4.1spec (vol.3, Part G, ch. 3.3.1), when a "Discover Characteristics By UUID" has been started. It will be the value of the Characteristic if a "Read using Characteristic UUID" has been performed.

**Table 260. Evt\_Blue\_Gatt\_Disc\_Read\_Charac\_By\_UUID\_Resp**

Parameter	Size	Description
Event_code	2 bytes	The event code of the vendor specific event
Connection_Handle	2 bytes	Connection handle where the procedure started.
Data_len	1 byte	Length of following data
Attribute_Handle	2 bytes	Handle of the discovered attribute
Attribute_Value	(Data_len - 2) bytes	Attribute value

#### 4.6.5 Evt\_Blue\_Gatt\_Write\_Permit\_req

This event is given to the application when a write request, write command or signed write command is received by the server from the client. This event will be given to the application only if the event bit for this event generation is set when the characteristic was added.

When this event is received, the application has to check whether the value being requested for write can be allowed to be written and respond with the command `Aci_Gatt_Write_Resp`. The details of the parameters of the command can be found. Based on the response from the application, the attribute value will be modified by the stack. If the write is rejected by the application, then the value of the attribute will not be modified. In case of a write REQ, an error response will be sent to the client, with the error code as specified by the application. In case of write/signed write commands, no response is sent to the client but the attribute is not modified.

**Table 261. Evt\_Blue\_Gatt\_Write\_Permit\_req**

Parameter	Size	Description
Event code	2 bytes	The event code of the vendor specific event
Connection handle	2 bytes	Handle of the connection on which there was the request to write the attribute
Attribute handle	2 bytes	The handle of the attribute for which the write request has been made by the client
data_len	1 byte	The length of the data to follow
data buffer	0-N bytes	The data that the client has requested to write

#### 4.6.6 Evt\_Blue\_Gatt\_Read\_Permit\_Req

This event is given to the application when a read request or read blob request is received by the server from the client. This event will be given to the application only if the event bit for this event generation is set when the characteristic was added.

On receiving this event, the application can update the value of the handle if it desires and when done, it has to send the `Aci_Gatt_Allow_Read` command to indicate to the stack that it can send the response to the client.

**Table 262. Evt\_Blue\_Gatt\_Read\_Permit\_Req**

Parameter	Size	Description
Event code	2 bytes	The event code of the vendor specific event
Connection handle	2 bytes	Handle of the connection on which there was the request to read the attribute
Attribute handle	2 bytes	The handle of the attribute that has been requested by the client to be read
Datalen	1 byte	Length of the data to follow
Data	0-N bytes	Contains the offset from which the read has been requested

**4.6.7 Evt\_Blue\_Gatt\_Read\_Multi\_Permit\_Req**

This event is given to the application when a read multiple request or read by type request is received by the server from the client. This event will be given to the application only if the event bit for this event generation is set when the characteristic was added.

On receiving this event, the application can update the values of the handles if it desires and when done, it has to send the Aci\_Gatt\_Allow\_Read command to indicate to the stack that it can send the response to the client.

**Table 263. Evt\_Blue\_Gatt\_Read\_Multi\_Permit\_Req**

Parameter	Size	Description
Event code	2 bytes	The event code of the vendor specific event
Connection handle	2 bytes	Handle of the connection which requested to read the attribute
data_len	1 byte	The length of the data to follow
data buffer	0-N bytes	The handles of the attributes that have been requested by the client for a read

**4.6.8 Other GATT VS Events**

**Table 264. Other GATT VS Events**

Parameter	Size	Description
Event code	2 bytes	The event code of the vendor specific event
Connection handle	2 bytes	Connection handle on which the gatt procedure is running
data_len	1 byte	The length of the data to follow if any
data buffer	0-N bytes	Indicates whether the procedure completed with error (BLE_STATUS_FAILED) or was successful (BLE_STATUS_SUCCESS). This event will be generated when any one of the GATT client procedures are started by the application. The application has to associate the event with the procedure it had started.

## 4.7 HCI vendor specific commands

### 4.7.1 HCI VS commands

Table 265. HCI VS commands

Item	Event	EGID	EID	ECODE
1	Hal_IO_Init	0x00	0x01	0xFC01
2	Hal_IO_Configure	0x00	0x02	0xFC02
3	Hal_IO_set_bit	0x00	0x03	0xFC03
4	Hal_IO_get_bit	0x00	0x04	0xFC04
5	Write_Config_data	0x00	0x0C	0xFC0C
6	Read_Config_data	0x00	0x0D	0xFC0D
7	Set_Tx_power_level	0x00	0x0F	0xFC0F
8	Device_Standby	0x00	0x13	0xFC13
9	Number_Of_Packet_Sent_in_DirectTX	0x00	0x14	0xFC14
10	Tone_Start	0x00	0x15	0xFC15
11	Tone_Stop	0x00	0x16	0xFC16
12	Updater_Start	0x00	0x20	0xFC20
13	Updater_Reboot	0x00	0x21	0xFC21
14	Updater_Version	0x00	0x22	0xFC22
15	Updater_Buffer_Size	0x00	0x23	0xFC23
16	Updater_Erase_Blue_Flag	0x00	0x24	0xFC24
17	Updater_Reset_Blue_Flag	0x00	0x25	0xFC25
18	Updater_Erase_Sector	0x00	0x26	0xFC26
19	Updater_Program_Data_Block	0x00	0x27	0xFC27
20	Updater_Read_Data_Block	0x00	0x28	0xFC28
21	Updater_Calculate_CRC	0x00	0x29	0xFC29
22	Updater_Read_HW_Version	0x00	0x2A	0xFC2A

1. For the updater commands, i.e. OpCode with 0xFC2x, please refer to the separate document BlueNRG-MS Updater Specification.
2. The 4 HAL\_IO\_XXX commands (Item 1-4) are disabled in the current release.

### 4.7.2 Hal\_IO\_Init

Table 266. Hal\_IO\_Init

Command name	Parameters	Return
Hal_IO_Init (0xFC01)		Status

Description:

Initialize the GPIOs of the BlueNRG-MS device.

Table 267. Hal\_IO\_Init return parameters

Parameter	Size	Description
Status	1 byte	0x00: BLE_STATUS_SUCCESS 0x47: BLE_STATUS_ERROR

Event(s) generated:

The controller will generate a command complete event.

### 4.7.3 Hal\_IO\_Configure

Table 268. Hal\_IO\_Configure

Command name	Parameters	Return
Hal_IO_Configure (0xFC02)	OE	Status

Description:

Set the direction of the GPIOs.

Table 269. Hal\_IO\_Configure command parameters

Parameter	Size	Description
OE	1 byte	Each bit represent one IO, a value "1" is output and a "0" input

Table 270. Hal\_IO\_Configure return parameters

Parameter	Size	Description
Status	1 byte	0x00: BLE_STATUS_SUCCESS 0x47: BLE_STATUS_ERROR

Event(s) generated:

The controller will generate a command complete event.

#### 4.7.4 Hal\_IO\_set\_bit

Table 271. Hal\_IO\_set\_bit

Command name	Parameters	Return
Hal_IO_set_bit (0xFC03)	Index Value	Status

Description:

Set the value of a given IO.

Table 272. Hal\_IO\_set\_bit command parameters

Parameter	Size	Description
Index	1 byte	The index of the pin to be manipulated.
Value	1 byte	A value equal to "0" reset the state of the pin; a different value set the pin to high.

Table 273. Hal\_IO\_set\_bit return parameters

Parameter	Size	Description
Status	1 byte	0x00: BLE_STATUS_SUCCESS 0x47: BLE_STATUS_ERROR

Event(s) generated:

The controller will generate a command complete event.

#### 4.7.5 Hal\_IO\_get\_bit

Table 274. Hal\_IO\_get\_bit

Command name	Parameters	Return
Hal_IO_get_bit (0xFC04)	Index	Status Value

Description:

Request the value of a pin.

Table 275. Hal\_IO\_get\_bit command parameters

Parameter	Size	Description
Index	1 byte	The index of the pin to be manipulated.

Table 276. Hal\_IO\_get\_bit return parameters

Parameter	Size	Description
Index	1 byte	0x00: BLE_STATUS_SUCCESS 0x47: BLE_STATUS_ERROR
Value	1 byte	0x0: IO value is 0 0x1: IO value is 1

Event(s) generated:

The controller will generate a command complete event.

#### 4.7.6 Write\_Config\_Data

Table 277. Write\_Config\_Data

Command name	Parameters	Return
Write_Config_Data (0xFC0C)	Offset Length Value	Status

Description:

This command writes a value to a low level configure data structure. It is useful to setup directly some low level parameters for the system in the runtime.

Table 278. Write\_Config\_Data command parameters

Parameter	Size	Description
Offset	1 byte	Offset in the data structure. The starting member in the data structure will have an offset 0.
Length	1 byte	Length of data to be written
Value	0-N bytes	Data to be written

Table 279. Write\_Config\_Data members

Data Members	Size	Size	Description
Public address	6 bytes	0x00	Bluetooth public address
DIV	2 bytes	0x06	DIV used to derive CSRK
ER	16 bytes	0x08	Encryption root key used to derive LTK and CSRK
IR	16 bytes	0x18	Identity root key used to derive LTK and CSRK

**Table 279. Write\_Config\_Data members (continued)**

Data Members	Size	Size	Description
LLWithoutHost	1 byte	0x2C	Switch on/off Link Layer only mode
Role	1 byte	0x2D	Select the BlueNRG-MS roles and mode configuration. 1: Slave + RAM1 only 2: Slave + RAM1 and 2 3: Master + RAM1 and 2

**Table 280. Write\_Config\_Data return parameters**

Parameter	Size	Description
Status	1 byte	0x00: BLE_STATUS_SUCCESS 0x12: ERR_INVALID_HCI_CMD_PARAMS

Event(s) generated:

The controller will generate a command complete event.

#### 4.7.7 Read\_Config\_Data

**Table 281. Read\_Config\_Data**

Command name	Parameters	Return
Read_Config_Data (0xFC0D)	Offset	Status Value

Description:

This command requests the value in the low level configure data structure. For more information see the command Write\_Config\_Data. The number of bytes of returned Value changes for different Offset.

**Table 282. Read\_Config\_Data command parameters**

Parameter	Size	Description
Offset	1 byte	Offset in the data structure. The starting member in the data structure will have an offset 0.

**Table 283. Read\_Config\_Data return parameters**

Parameter	Size	Description
Status	1 byte	0x00: BLE_STATUS_SUCCESS 0x12: ERR_INVALID_HCI_CMD_PARAMS
Value	0-N bytes	Value read at the offset specified

Event(s) generated:

The controller will generate a command complete event.

### 4.7.8 Set\_Tx\_power\_level

**Table 284. Set\_Tx\_power\_level**

Command name	Parameters	Return
Set_Tx_power_level (0xFC0F)	EN_HIGH_POWER PA_LEVEL	Status

Description:

This command sets the TX power level of the BlueNRG-MS. By controlling the EN\_HIGH\_POWER and the PA\_LEVEL, the combination of the 2 determines the output power level (dBm). See the table below.

When the system starts up or reboots, the default TX power level will be used, which is the maximum value of 8 dBm. Once this command is given, the output power will be changed instantly, regardless if there is Bluetooth communication going on or not. For example, for debugging purpose, the BlueNRG-MS can be set to advertise all the time. And use this command to observe the signal strength changing.

The system will keep the last received TX power level from the command, i.e. the 2nd command overwrites the previous TX power level. The new TX power level remains until another Set TX Power command, or the system reboots.

**Table 285. Set\_Tx\_power\_level command parameters**

Parameter	Size	Description
EN_HIGH_POWER	1 byte	Can be only 0 or 1. Set high power bit on or off.
PA_LEVEL	1 byte	Can be from 0 to 7. Set the PA level value.

**Table 286. Tx\_power\_level command parameters combination**

EN_HIGH_POWER	PA_LEVEL	TX Power Level (dBm)
0	0	-18
0	1	-14.7
0	2	-11.4
0	3	-8.1
0	4	-4.9
0	5	-1.6
0	6	1.7
0	7	5.0
1	0	-15
1	1	-11.7
1	2	-8.4

**Table 286. Tx\_power\_level command parameters combination (continued)**

EN_HIGH_POWER	PA_LEVEL	TX Power Level (dBm)
1	3	-5.1
1	4	-2.1
1	5	1.4
1	6	4.7
1	7	8.0 (default)

**Table 287. Set\_Tx\_power\_level return parameters**

Parameter	Size	Description
Status	1 byte	0x00: BLE_STATUS_SUCCESS 0x12: ERR_INVALID_HCI_CMD_PARAMS

Event(s) generated:

The controller will generate a command complete event.

#### 4.7.9 Device\_Standby

**Table 288. Device\_Standby**

Command name	Parameters	Return
Device_Standby(0xFC13)		Status

Description:

Normally the BlueNRG-MS will automatically enter sleep mode to save power. This Device\_Standby command further put the device into the Standby mode instead of the sleep mode. The difference is that, in sleep mode, the device can still wake up itself with the internal timer. But in standby mode, this timer is also disabled. So the only possibility to wake up the device is by the external signals, e.g. a HCI command sent via SPI bus.

Based on the measurement, the current consumption under sleep mode is ~2 uA. And this value is ~1.5 uA in standby mode.

The command is only accepted when there is no other Bluetooth activity. Otherwise an error code "command disallowed" will return.

**Table 289. Device\_Standby return parameters**

Parameter	Size	Description
Status	1 byte	0x00: BLE_STATUS_SUCCESS 0x0C: ERR_COMMAND_DISALLOWED This command is not allowed when Bluetooth activity is ongoing

Event(s) generated:

The controller will generate a command complete event.

#### 4.7.10 Number\_Of\_Packet\_Sent\_in\_DirectTX

**Table 290. Number\_Of\_Packet\_Sent\_in\_DirectTX**

Command name	Parameters	Return
Number_Of_Packet_Sent_in_DirectTX (0xFC14)		Status Packet Counter

Description:

During the Direct Test mode, in the TX tests, the number of packets sent in the test is not returned when executing the Direct Test End command. This command implements this feature.

If the Direct TX test is started, a 32-bit counter will be used to count how many packets have been transmitted. After the Direct Test End, this command can be used to check how many packets were sent during the Direct TX test.

The counter starts from 0 and counts upwards. As would be the case if 32-bits are all used, the counter wraps back and starts from 0 again. The counter is not cleared until the next Direct TX test starts.

**Table 291. Number\_Of\_Packet\_Sent\_in\_DirectTX return parameters**

Parameter	Size	Description
Status	1 byte	0x00: BLE_STATUS_SUCCESS
Packet counter	4 bytes	Number of packets sent during the last Direct TX test

Event(s) generated:

The controller will generate a command complete event.

#### 4.7.11 Tone\_Start

**Table 292. Tone\_Start**

Command name	Parameters	Return
Tone_Start (0xFC15)	Channel ID	Status

Description:

This command starts a carrier frequency, i.e. a tone, on a specific channel. The frequency sine wave at the specific channel may be used for debugging purpose only. The channel ID is a parameter from 0x00 to 0x27 for the 40 BLE channels, e.g. 0x00 for 2.402 GHz, 0x01 for 2.404 GHz etc.

This command should not be used when normal Bluetooth activities are ongoing.

The tone should be stopped by Tone\_Stop command.

**Table 293. Tone\_Start command parameters**

Parameter	Size	Description
Channel ID	1 byte	BLE Channel ID, from 0x00 to 0x27 meaning (2.402 + 2*0xXX) GHz

**Table 294. Tone\_Start return parameters**

Parameter	Size	Description
Status	1 byte	0x00: BLE_STATUS_SUCCESS

Event(s) generated:

The controller will generate a command complete event.

#### 4.7.12 Tone\_Stop

**Table 295. Tone\_Stop**

Command name	Parameters	Return
Tone_Stop (0xFC16)		Status

Description:

This command is used to stop the previously started Tone\_Start command.

**Table 296. Tone\_Stop return parameters**

Parameter	Size	Description
Status	1 byte	0x00: BLE_STATUS_SUCCESS

Event(s) generated:

The controller will generate a command complete event.

## 5 SPI interface

The BlueNRG-MS device provides an SPI interface, which can be used to connect an external device. The external device normally is an application processor. It sends ACI commands to control the BlueNRG-MS device. And the BlueNRG-MS generates ACI events to report back to the external application processor. The ACI commands and events are transmitted through the SPI bus.

This chapter describes the BlueNRG-MS hardware SPI interface. Also it describes the communication protocol over the SPI bus between the BlueNRG-MS and the external device.

### 5.1 Hardware SPI interface

The BlueNRG-MS SPI interface is Motorola protocol compliant, which has 5 wires: CLK (clock), nCS (chip select), MOSI (master output slave input), MISO (master input slave output), and DataRdy\_IRQ (transmit interrupt request).

The BlueNRG-MS always behaves as the slave device on the SPI bus. The external device must be the SPI master.

The table below shows the 5 SPI pins on the BlueNRG-MS device, including the pin number of the silicon chip and the pin direction from the BlueNRG-MS's side.

**Table 297. SPI pins**

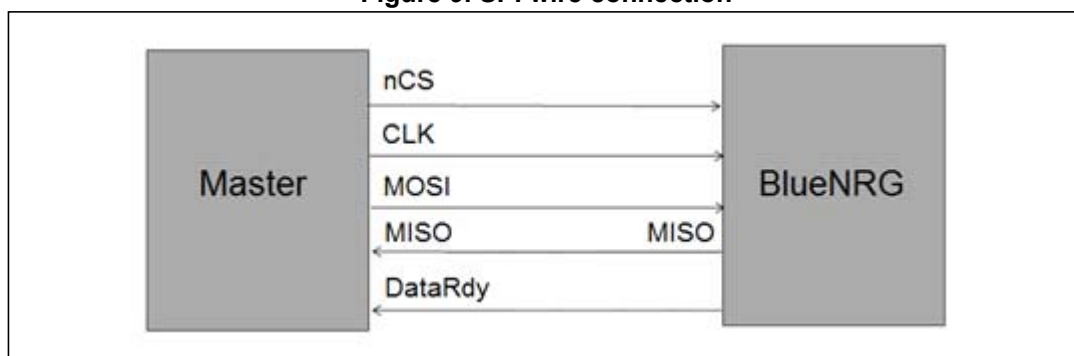
Pin name	Pin n°	Direction
SPI_CLK	2	Input
SPI_NCS	31	Input
SPI_MOSI	1	Input
SPI_MISO	32	Output
SPI_IRQ	3	Output

Here is the summary of the SPI parameters:

1. The CS line is active low.
2. The clock signal can go up to 8 MHz, or can go as low as 100 kHz.
3. The clock is inactive low, i.e. the clock polarity CPOL = 0.
4. The data is valid on clock leading edge, i.e. the clock phase CPHA = 0.
5. The data transfer is always 8-bit byte based.
6. For each byte, the Most Significant Bit is sent first.

*Figure 9* shows how to connect BlueNRG-MS SPI bus to an external SPI master.

Figure 9. SPI wire connection



The SPI master, i.e. an application processor, always controls when to start an SPI transaction. This can happen at any time. It is started by putting low the nCS line to activate the BlueNRG-MS device. Then the master should provide the SPI clock. Together with the clock, the master should output the data on the SPI bus through the MOSI line, either dummy data or valid data. At the same time, the slave returns data from the MISO line, because SPI is in principle a shift register.

When the SPI master wants to send data to the BlueNRG-MS, i.e. an SPI write, it sets nCS to low, then sends the SPI clock and dummy data to read an SPI header from the BlueNRG-MS. The SPI header format will be described in the following section. If the SPI header indicates that the BlueNRG-MS has enough space in the buffer, the SPI master can then send real data over the SPI bus. The SPI master should not overwrite the BlueNRG-MS SPI buffer, otherwise the communication will fail.

When the BlueNRG-MS wants to send data to the SPI master, i.e. an SPI read, it must use the IRQ pin, because the SPI slave cannot control the nCS line. The BlueNRG-MS will set the IRQ pin to high, which notifies the SPI master that there is data to be read. Then the SPI master should start an SPI transaction, reading the SPI header, and from where it will know how many bytes it should read back from the BlueNRG-MS. The SPI master should not read bytes other than those indicated as the SPI header, otherwise the communication will fail.

The DataRdy (IRQ) pin of the BlueNRG-MS should work as follows: (1) it must be high when BlueNRG-MS has data to send to the SPI master; (2) It must be high impedance when BlueNRG-MS has no data to send to the SPI master. On the SPI master side, this pin must be configured as an input pin. The SPI master may poll this pin, or use it as an interrupt source, to detect when an SPI read is required. Also there should be a pull down resistor, either on the SPI master IRQ pin or externally connected. This pull down resistor makes sure the DataRdy value goes back to 0, so it does not confuse the SPI master to misread data. Note that the reason that IRQ pin must be high-Z when there is no data to send is because we also use this pin as input when BlueNRG-MS boots up. The IRQ pin value will determine if the updater mode is required or not. After the BlueNRG-MS goes to normal working state, the IRQ pin is configured as output for SPI interface.

Note also that the MISO also goes to high-Z when BlueNRG-MS does not send data. This allows multi-SPI slaves on the same bus. This other SPI slave may access the bus when BlueNRG-MS does not.

## 5.2 SPI communication protocol

To communicate with the BlueNRG-MS, the data on the SPI bus must be formatted as described in this section.

An SPI transaction is defined from the time instant when the master puts the nCS line to low, until the time instant when the nCS line is back to high.

Each SPI transaction should contain 1 data frame. Each data frame should contain at least 5 bytes of header, and may have 0-N bytes of data.

### 5.2.1 Header

Figure 10. SPI header format

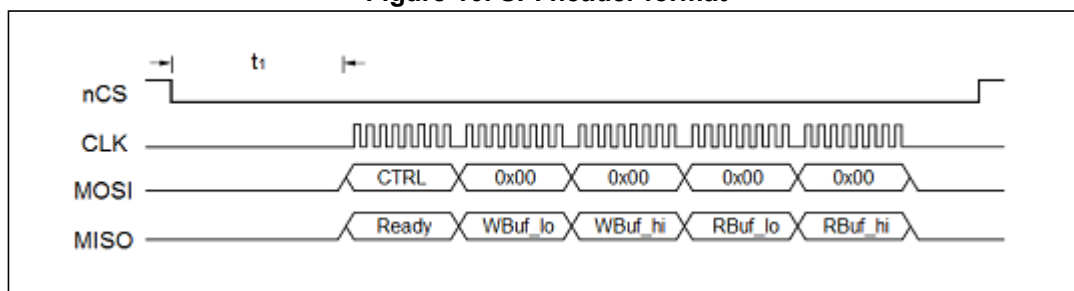


Figure 10 above shows an SPI frame, with minimum 5 bytes SPI header, and 0 byte SPI data.

The header of the master is on the MOSI line, which is 1 control byte and 4 bytes 0x00. The control byte can have only the value of 0x0A (SPI write) or 0x0B (SPI read).

The BlueNRG-MS returns the slave header on the MISO line at the same time. The 1st byte is the SPI READY indication. It must be 0x02 to indicate the slave SPI interface is ready. If it is any value other than 0x02, the master must ignore the following 4 bytes and abort the SPI transaction. If the BlueNRG-MS SPI is ready (Ready byte = 0x02), the following 4 bytes give 2 buffer sizes for write and read, 2 bytes for each buffer. Of the 2-byte buffer size, the lower byte comes first, then the higher byte. The write buffer size means how many bytes the master can write to the BlueNRG-MS. The read buffer size means how many bytes in the BlueNRG-MS are waiting for the master to read.

For example, if the slave header is 0x0200010500, the write buffer size is 0x0100 and the read buffer size is 0x0005. So the master cannot write more than 256 bytes to the BlueNRG-MS, and it should read back 5 bytes from the BlueNRG-MS as soon as possible.

The SPI master may poll the BlueNRG-MS by sending dummy SPI headers, just to check what value is in the BlueNRG-MS SPI header. For example, the SPI master can send an SPI frame with only 5 bytes header: the CTRL byte can be either write or read, then following 4 bytes 0x00 dummy bytes. After the header, the SPI master stops the frame, without sending any real data. So the write/read action will not happen in practice.

### 5.2.2 Write data to BlueNRG-MS

To write data to the BlueNRG-MS, the SPI master must start an SPI frame to check the BlueNRG-MS SPI header, and the following 3 conditions must be met:

1. The master sends the CTRL byte as 0x0A.
2. The slave replies with SPI READY byte as 0x02.
3. The write buffer size is bigger than 0.

If so, the master can put the data bytes following the 5 header bytes on the MOSI line in the same transaction.

If the master is fast enough, it may start sending data bytes immediately in the same SPI transaction where the 3 conditions are just seen satisfied. Or the master may choose to stop the SPI transaction for now, go back to prepare the data, and send them in a later SPI transaction.

The SPI master is allowed to write less bytes than the write buffer size, but it is forbidden to write more. In case an ACI command packet is bigger than 128 bytes. The master has to send it in 2 SPI write transactions. The master firstly sends 128 bytes, then waiting for the write buffer to be available again, and then write the remaining bytes.

The BlueNRG-MS will count how many bytes are actually received on the MOSI line. So the master does not need to indicate how many bytes it intends to write.

The write buffer size value is the data bytes of the payload. It does not include the 5 header bytes.

When the master is sending real data bytes on the MOSI line, the BlueNRG-MS will return the same amount of bytes from its own shift register. The master should ignore these bytes.

### 5.2.3 Read data from BlueNRG-MS

The BlueNRG-MS uses the IRQ pin to notify the SPI master when it has data to be read. When the SPI master sees the IRQ pin become high, it should read data from BlueNRG-MS.

The protocol is similar to SPI write. The SPI master starts a transaction to check the SPI header. The master puts 0xB in the CTRL byte, and checks again if the slave is ready (0x02), and the read buffer size is non-zero. Then the master sends certain amount of dummy bytes (e.g. 0x00 or 0xFF) on the MOSI line, while reading back the slave data from the MISO line. The reading process can happen in 1 SPI transaction or in multiple SPI transactions.

The SPI master should read from BlueNRG-MS as long as the IRQ pin is high.

### 5.2.4 SPI operation with BlueNRG-MS sleep mode

The BlueNRG-MS device is designed with a deep sleep mode, in which it turns off most of the internal functions to save power. The BlueNRG-MS goes into sleep mode automatically when there is no Bluetooth activity ongoing. So it is very likely that the BlueNRG-MS is sleeping when the master starts an SPI transaction.

The BlueNRG-MS wakes up as soon as the nCS line is put to low. But then it needs to initialize and prepare the SPI buffers. This will take some time. So the following sequence is likely to occur on the SPI bus:

1. The master puts the nCS line to low and the BlueNRG-MS wakes up. BlueNRG-MS is expecting a command within 2 ms before going to sleep.
2. The master sends the header, but the BlueNRG-MS replies with the READY byte as 0x00 or 0xFF. This means the BlueNRG-MS SPI interface is still not initialized.
3. The master keeps polling the BlueNRG-MS, (releasing and asserting CS again). In order to read again the header, the SPI master has to release the CS line and assert it within 2ms from the previous CS assertion. After a while, the READY byte becomes 0x02 but both the buffer sizes are 0x00. This means the BlueNRG-MS SPI is initialized, but the buffer is not yet prepared.
4. As soon as the buffer size becomes non-zero, the master can write data to the BlueNRG-MS.

With the measurement, the master should allow about 0.5 ms for the BlueNRG-MS to be completely ready for the SPI communication. Note that 0.5 ms is when non-retention RAM of BlueNRG-MS must be initialized upon wakeup (i.e. device in mode1 - slave only mode). The value can be 0.3 ms if non-retention RAM initialization is not required, which makes the SPI ready faster.

This waiting operation is only needed when the SPI bus is idle for a while. If the master is continuously writing, from the 2<sup>nd</sup> write transaction there is no need to wait, because the BlueNRG-MS will not sleep if there is still SPI data to be processed. Also, there is no need to wait when reading from the BlueNRG-MS, because it cannot sleep if it still holds data for the master.

## 6 Revision history

**Table 298. Document revision history**

Date	Revision	Changes
04-Mar-2015	1	Initial release.

**IMPORTANT NOTICE – PLEASE READ CAREFULLY**

STMicroelectronics NV and its subsidiaries ("ST") reserve the right to make changes, corrections, enhancements, modifications, and improvements to ST products and/or to this document at any time without notice. Purchasers should obtain the latest relevant information on ST products before placing orders. ST products are sold pursuant to ST's terms and conditions of sale in place at the time of order acknowledgement.

Purchasers are solely responsible for the choice, selection, and use of ST products and ST assumes no liability for application assistance or the design of Purchasers' products.

No license, express or implied, to any intellectual property right is granted by ST herein.

Resale of ST products with provisions different from the information set forth herein shall void any warranty granted by ST for such product.

ST and the ST logo are trademarks of ST. All other product or service names are the property of their respective owners.

Information in this document supersedes and replaces information previously supplied in any prior versions of this document.

© 2015 STMicroelectronics – All rights reserved