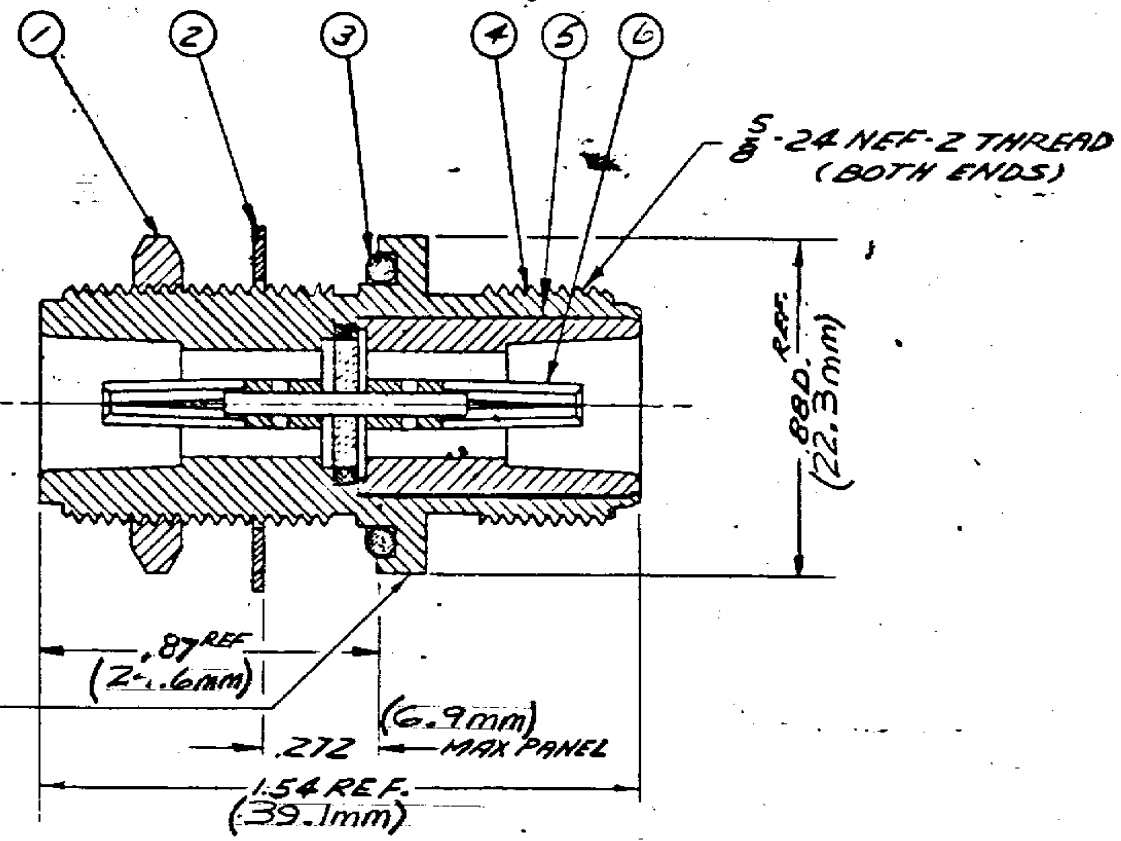


KN-99-58

UNLESS OTHERWISE SPECIFIED LIMITS ON DIMENSIONS ARE
 FRACTIONS = .010 DECIMALS = .004 ANGLES = 1/2

REVISIONS	
NO.	CHANGED
0	ER 9505 CC 29 MAR 71
1	CN 15634 A JHP 31 MAR 76
2	CN 24777 C M.A. 20 JUL 83
3	CN 27301 C CT. 1 AUG 85



STAMP:
KINGS KN-99-58

REF:	S.D
FINISH	
SPEC.	KER-10004
MAT.	
SPEC.	

ITEM NO	QTY	DESCRIPTION	DRAWING NO
0	1	CONTACT ASSY	
5	1	BUSHING	
4	1	BODY	
3	1	O-RING	
2	1	LOCKWASHER	556B-3-M06
1	1	HEX NUT	704-4-M06

N(F-F) BULKHEAD
ADAPTER-HERM SEAL

DRAWN	CC	DATE	24 MAR 71
APPR	J.M.	DATE	29 MAR 71

ALL DIMENSIONS
PRIOR TO PLATING

REMOVE ALL BURRS. MAINTAIN
SHARP CORNERS UNLESS CHAMFERS.
RADI OR FILLETS ARE SPECIFIED.

UNLESS OTHERWISE SPECIFIED,
MAXIMUM ACCEPTABLE SURFACE ROUGHNESS IS
100 MICROINCHES RMS IN ACCORDANCE WITH NAS-30

KINGS ELECTRONICS
40 MARELEDALE ROAD
TUCKAHOE, N. Y.
KN-99-58 S.D