

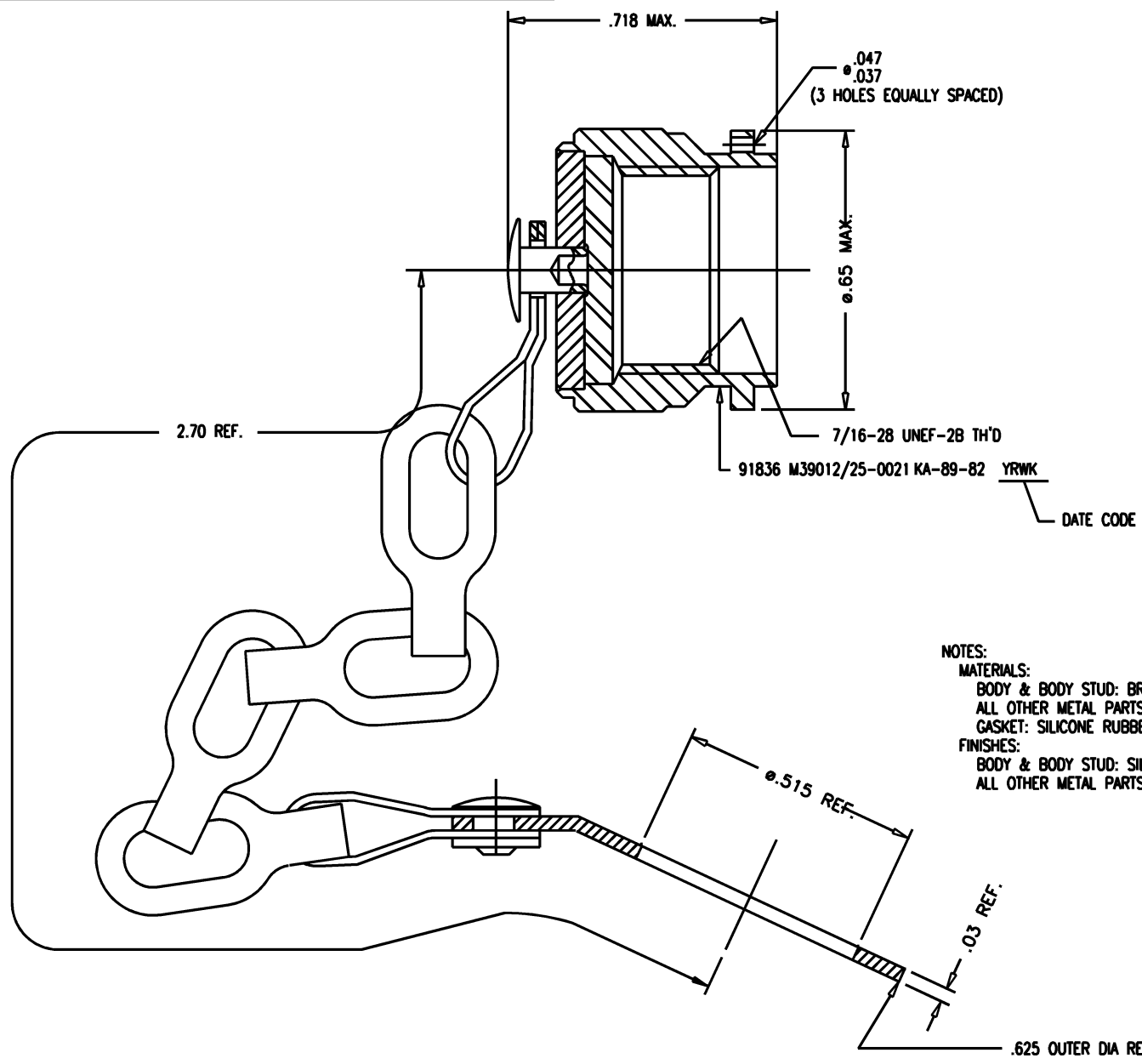
DASH NO.	M CODE	MADE FROM
----------	--------	-----------

# GSD

M39012/25-0021

**REVISIONS**

ISSUE	CHANGES
0	ER 35278 TK 01/11/94
1	CN 38663 C BDH 09/19/02
2	CN 40029 C HVN 08/17/07



NOTES:  
 MATERIALS:  
 BODY & BODY STUD: BRASS, ASTM-B-16  
 ALL OTHER METAL PARTS: STAINLESS STEEL, 302 OR 303  
 GASKET: SILICONE RUBBER, A-A-59588  
 FINISHES:  
 BODY & BODY STUD: SILVER PLATE PER ASTM-B-700  
 ALL OTHER METAL PARTS: PASSIVATE PER AMS-2700

SCALE	4:1		
APPROX SURFACE AREA	KA-89-82		
USED ON			
REF:	CAP & CHAIN, TNC, M		
DRAWN	TK	DATE	01/11/94
DESIGN	TK	DATE	01/11/94
APPR.	VLS	DATE	01/12/94

A Winchester Electronics Company

M39012/25-0021

# GSD