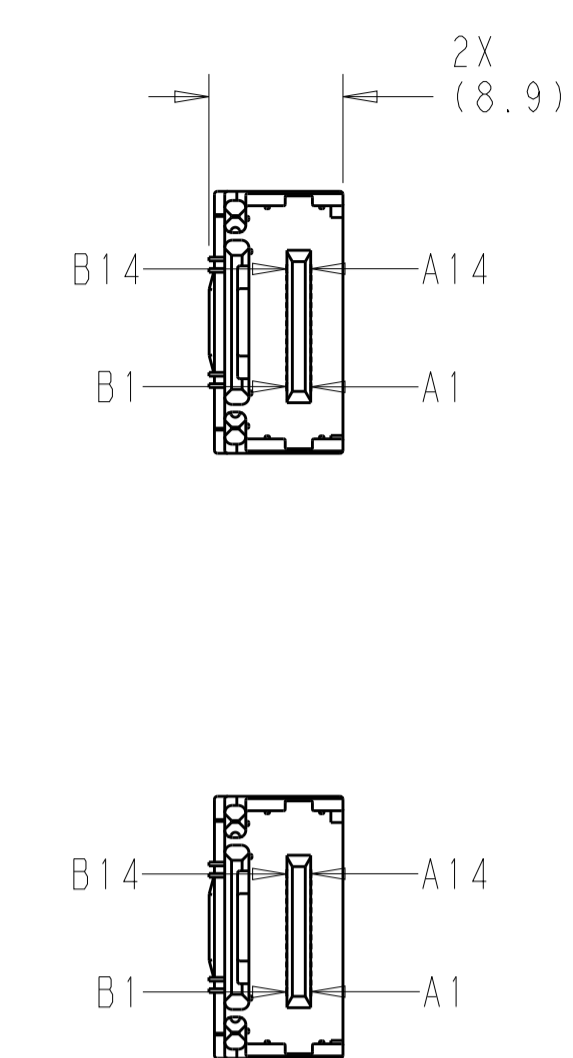
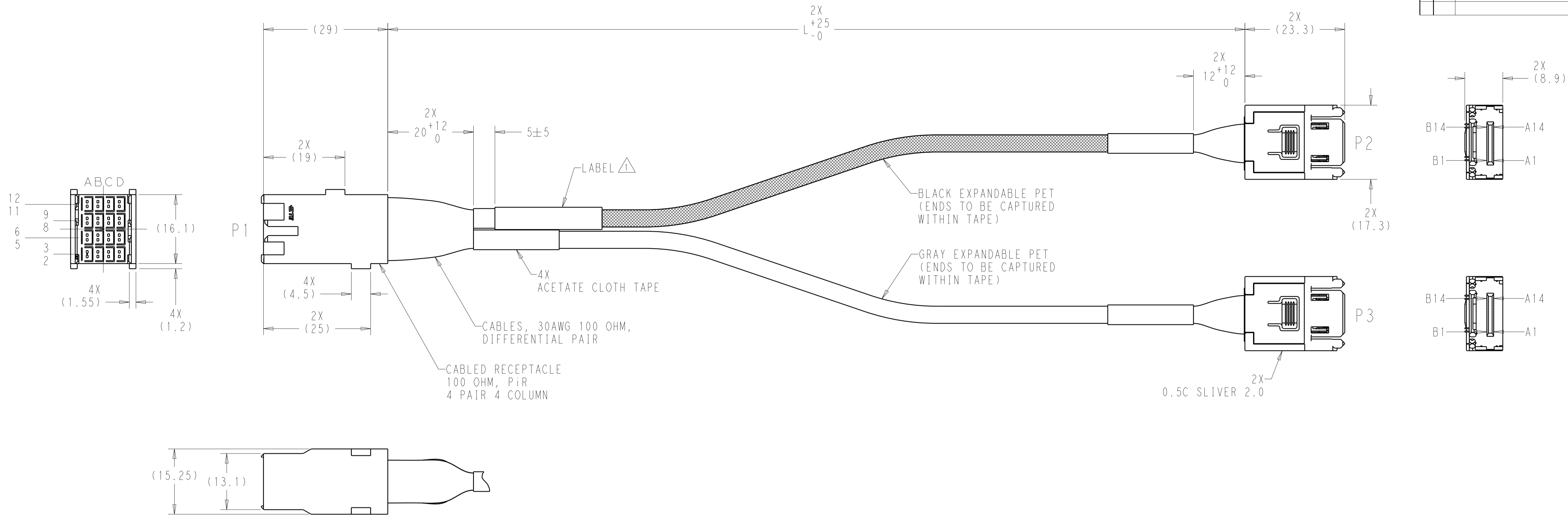


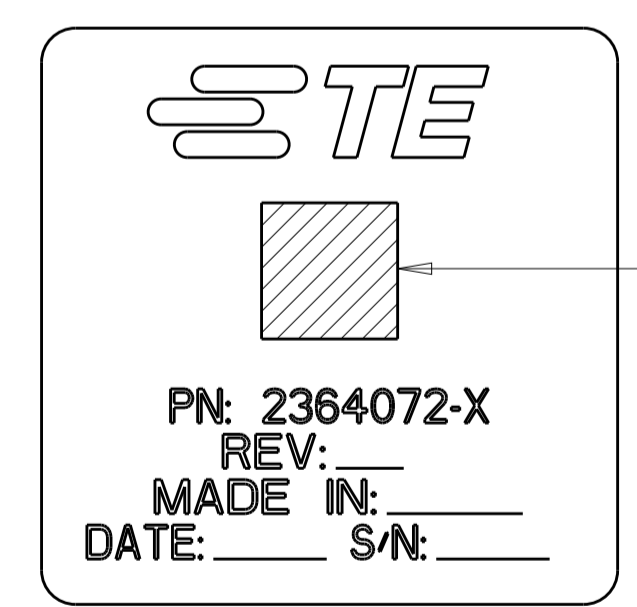
| REVISIONS | | | | |
|-----------|-----|-------------|-----------|--------|
| P | LTM | DESCRIPTION | DATE | APVD |
| A | | RELEASED | 20FEB2020 | REH MK |



WIRING TABLES

| PI | DESIGNATION | P2 | PI | DESIGNATION | P3 |
|-----|-------------|-----|----|-------------|-----|
| | GROUND | B1 | | GROUND | B1 |
| A11 | RX4P | B2 | A8 | RX4P | B2 |
| A12 | RX4N | B3 | A9 | RX4N | B3 |
| | GROUND | B4 | | GROUND | B4 |
| B11 | RX3N | B5 | B8 | RX3N | B5 |
| B12 | RX3P | B6 | B9 | RX3P | B6 |
| | GROUND | B7 | | GROUND | B7 |
| C11 | RX2P | B8 | C8 | RX2P | B8 |
| C12 | RX2N | B9 | C9 | RX2N | B9 |
| | GROUND | B10 | | GROUND | B10 |
| D11 | RX1N | B11 | D8 | RX1N | B11 |
| D12 | RX1P | B12 | D9 | RX1P | B12 |
| | GROUND | B13 | | GROUND | B13 |
| | N/C | B14 | | N/C | B14 |
| | GROUND | A1 | | GROUND | A1 |
| A5 | TX4N | A2 | A2 | TX4N | A2 |
| A6 | TX4P | A3 | A3 | TX4P | A3 |
| | GROUND | A4 | | GROUND | A4 |
| B5 | TX3P | A5 | B2 | TX3P | A5 |
| B6 | TX3N | A6 | B3 | TX3N | A6 |
| | GROUND | A7 | | GROUND | A7 |
| C5 | TX2N | A8 | C2 | TX2N | A8 |
| C6 | TX2P | A9 | C3 | TX2P | A9 |
| | GROUND | A10 | | GROUND | A10 |
| D5 | TX1P | A11 | D2 | TX1P | A11 |
| D6 | TX1N | A12 | D3 | TX1N | A12 |
| | GROUND | A13 | | GROUND | A13 |
| | N/C | A14 | | N/C | A14 |

△ LABEL INFORMATION: BARCODE FORMAT - 2D DATAMATRIX



BARCODE INFO:
2364072-ddxxwwyyssss
dd=DASH NUMBER
xx=MANUFACTURING SITE
US=UNITED STATES, CN=CHINA, MX=MEXICO
ww=WEEK
yy=YEAR
ssss=SERIAL NUMBER 0000 THRU 9999

- ALL MATERIALS, COMPONENTS AND PROCESS SHALL COMPLY WITH TEC-138-702. (CONTAINS NO BANNED OR RESTRICTED SUBSTANCES).
- NO REACH SVHC SHALL BE CONTAINED ABOVE THE THRESHOLD AS DEFINED IN REACH SVHC COMPLIANCE DEFINITION IN ANNEX A OF TEC-138-702.
- EACH CABLE ASSEMBLY TESTED FOR CONTINUITY, OPENS, SHORTS, AND SIGNAL INTEGRITY.
- SIGNAL DESIGNATIONS ARE FROM THE PERSPECTIVE OF ASIC WIRED INTO P2 AND P3 INTERFACE.
- ALL GROUNDS PRESENT ON P1, P2, AND P3 ARE COMMONED TOGETHER.
- MIN CABLE BEND RADIUS OF 10.4mm.

THIS PRODUCT HAS NOT COMPLETED VALIDATION AND QUALIFICATION TESTING

| | |
|-----|-----------|
| 500 | 2364072-3 |
| 370 | 2364072-2 |
| 250 | 2364072-1 |
| L | PART NO |

THIS DRAWING IS A CONTROLLED DOCUMENT.

TE Connectivity

NAME: CABLE ASSEMBLY, 4 PAIR 4 COLUMN WHISPER RECEPTACLE TO 2X 0.5C SLIVER 2.0

SIZE: A1 CAGE CODE: 00779 DRAWING NO: 2364072

SCALE: 3:1 SHEET 1 OF 1 REV A