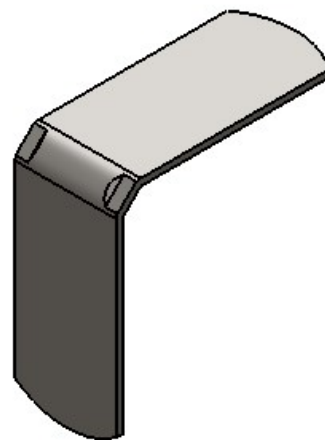


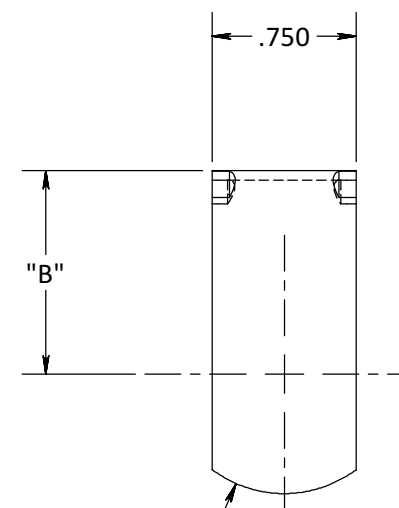
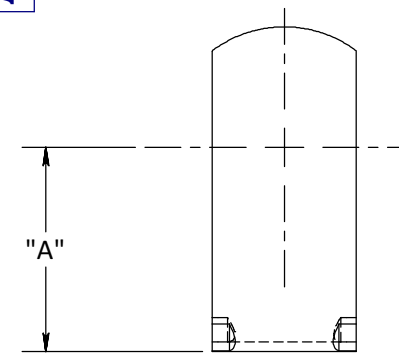
TABLE I		
DASH NO.	"T" GAUGE	METAL CODES AVAILABLE
-1	.040	ALL
-2	.050	ALL
-3	.060	ALL
-4	.070	"D" AND "DC"

MATERIAL & FINISH CODES:

METAL: (-) 1008/1020 LOW CARBON STEEL PER ASTM A 1008, ASTM A 109, QQ-S-698
 FINISH: CAD PLATE GOLD PER AMS-QQ-P-416, TY. II, CL. 2
 "D" 2024-T42 ALUMINUM CLAD PER AMS-QQ-A-250/5
 FINISH: NONE
 "DC" 2024-T42 ALUMINUM CLAD PER AMS-QQ-A-250/5
 FINISH: CHEMICAL FILM GOLD PER MIL-DTL-5541, TY. 1, CL. 1A
 "SS" 321 STAINLESS STEEL PER AMS 5510
 FINISH: BALL BURNISH AND PASSIVATE PER AMS 2700, CL. 1, METHOD 1, TY. 6

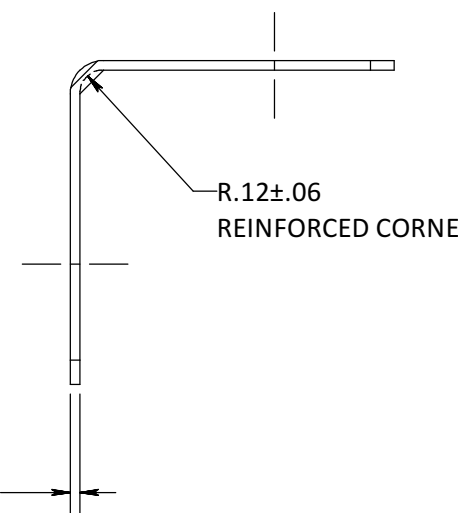


AE12



END RADIUS

"T" METAL GAUGE



EXAMPLE OF PART CALLOUT:

90 DEGREE, .06 THK. ALUMINUM ANGLE BRACKET


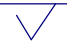
AE12 D 3 - 08 - 12

"B" DIMENSION IN 1/16th INCREMENTS
 "A" DIMENSION IN 1/16th INCREMENTS
 STYLE CODE (SEE SHT. 2 OF 2, DASH (-) INDICATES NO HOLES)
 METAL GAUGE
 METAL CODE
 BASIC PART NUMBER

NOTES:

1) PART IDENTIFICATION - STEEL STAMP OR RUBBER STAMP "UMPCO" AND COMPLETE PART NUMBER IN AREA AVAILABLE.

SHEET 1 OF 2

REFERENCES:									
LIMITS ON DIMENSIONS UNLESS OTHERWISE SPECIFIED:	ANGULAR:	X	± 5°	 UMPCO . INC. 7100 LAMPSON AVE. P.O. BOX 5158 GARDEN GROVE, CA. 92846			FSCM/CAGE CODE No. 18076		
	DECIMAL:	.XX	± .03				SCT	JLC	SCT
GENERAL MACHINE FINISHES EXCEPT AS NOTED:  INTERPRET GEOMETRIC TOLERANCING PER: ASME-Y14.5M	<small>PROPRIETARY AND CONFIDENTIAL THE INFORMATION CONTAINED IN THIS DRAWING IS THE SOLE PROPERTY OF UMPCO, INC. ANY REPRODUCTION IN PART OR AS A WHOLE WITHOUT THE WRITTEN PERMISSION OF UMPCO, INC IS PROHIBITED.</small>			02/07/91 02/07/91 02/07/91					
	REMOVE ALL BURRS AND BREAK SHARP EDGES .010 MAX	ACT. WGHT.	-	ANGLE BRACKET, 90 DEGREE PART AND/OR ASSEMBLY DESCRIPTION			SCALE: NONE	B AE12	
	CALC. WGHT.	-				PRINT NUMBER			

1

2

3

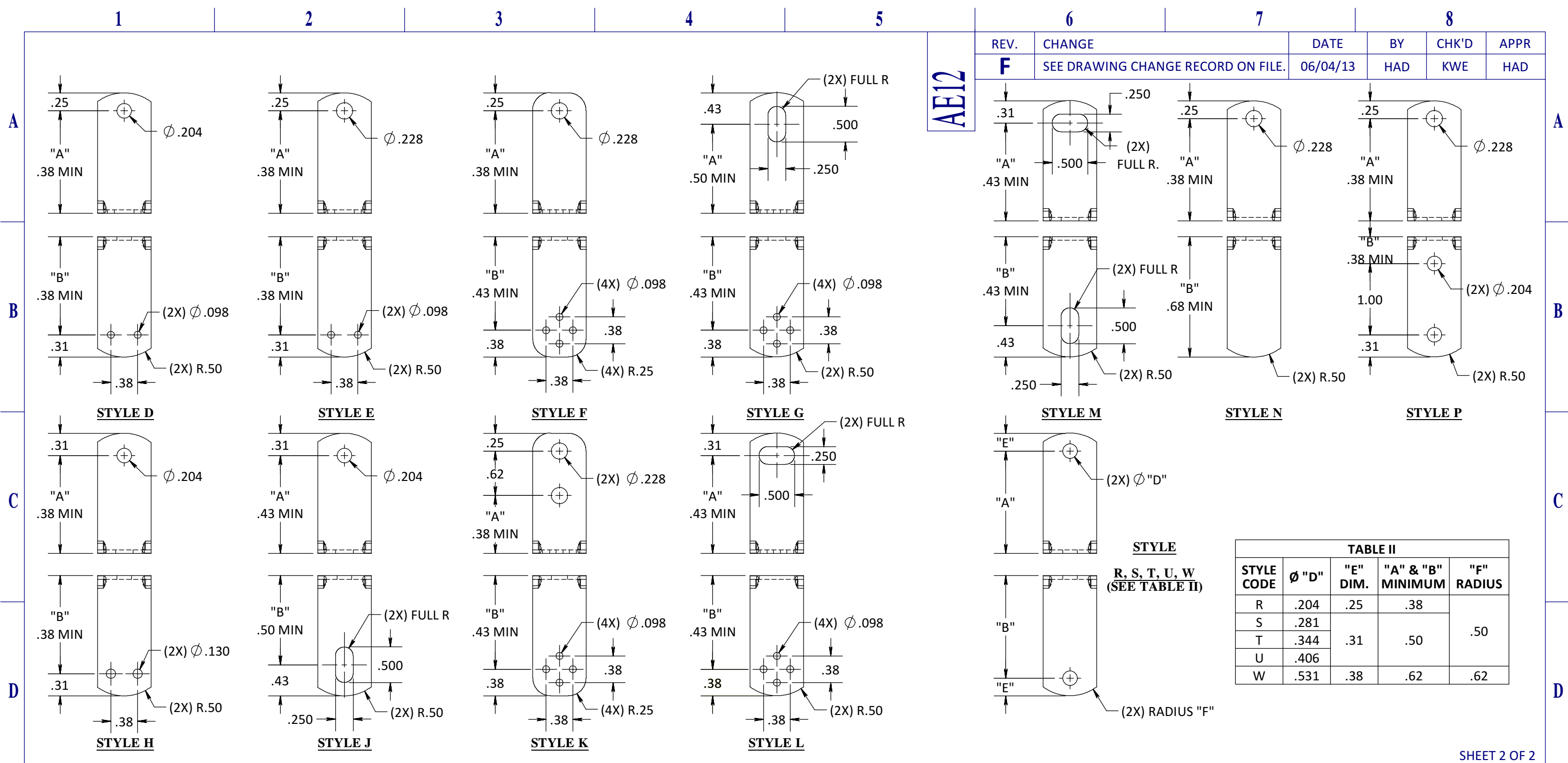
4

5

6

7


8



REV.	CHANGE	DATE	BY	CHK'D	APPR
F	SEE DRAWING CHANGE RECORD ON FILE.	06/04/13	HAD	KWE	HAD

STYLE CODE	Ø "D"	"E" DIM.	"A" & "B" MINIMUM	"F" RADIUS
R	.204	.25	.38	.50
S	.281	.31	.50	
T	.344			
U	.406			
W	.531			

SHEET 2 OF 2

REFERENCES:						
LIMITS ON DIMENSIONS UNLESS OTHERWISE SPECIFIED:	ANGULAR:	X	± 5°	 UMPCO, INC. 7100 LAMPSON AVE. P.O. BOX 5158 GARDEN GROVE, CA. 92846		
	DECIMAL:	.XX	± .03			
GENERAL MACHINE FINISHES EXCEPT AS NOTED:	<small>PROPRIETARY AND CONFIDENTIAL</small> <small>THE INFORMATION CONTAINED IN THIS DRAWING IS THE SOLE PROPERTY OF UMPCO, INC. ANY REPRODUCTION IN PART OR AS A WHOLE WITHOUT THE WRITTEN PERMISSION OF UMPCO, INC IS PROHIBITED.</small>			FSCM/CAGE CODE No. 18076 SCT JLC SCT 02/07/91 02/07/91 02/07/91 DRAWN CHECKED ENGR		
	✓ INTERPRET GEOMETRIC TOLERANCING PER: ASME-Y14.5M					
REMOVE ALL BURRS AND BREAK SHARP EDGES .010 MAX	ACT. WGHT.	-		ANGLE BRACKET, 90 DEGREE PART AND/OR ASSEMBLY DESCRIPTION		
	CALC. WGHT.	-				
				SIZE	SCALE: NONE	
				B	AE12	
				PRINT NUMBER		

REFERENCES:						
LIMITS ON DIMENSIONS UNLESS OTHERWISE SPECIFIED:	ANGULAR:	X	± 5°	 UMPCO, INC. 7100 LAMPSON AVE. P.O. BOX 5158 GARDEN GROVE, CA. 92846		
	DECIMAL:	.XX	± .03			
GENERAL MACHINE FINISHES EXCEPT AS NOTED:	<small>PROPRIETARY AND CONFIDENTIAL</small> <small>THE INFORMATION CONTAINED IN THIS DRAWING IS THE SOLE PROPERTY OF UMPCO, INC. ANY REPRODUCTION IN PART OR AS A WHOLE WITHOUT THE WRITTEN PERMISSION OF UMPCO, INC IS PROHIBITED.</small>			FSCM/CAGE CODE No. 18076 SCT JLC SCT 02/07/91 02/07/91 02/07/91 DRAWN CHECKED ENGR		
	✓ INTERPRET GEOMETRIC TOLERANCING PER: ASME-Y14.5M					
REMOVE ALL BURRS AND BREAK SHARP EDGES .010 MAX	ACT. WGHT.	-		ANGLE BRACKET, 90 DEGREE PART AND/OR ASSEMBLY DESCRIPTION		
	CALC. WGHT.	-				
				SIZE	SCALE: NONE	
				B	AE12	
				PRINT NUMBER		