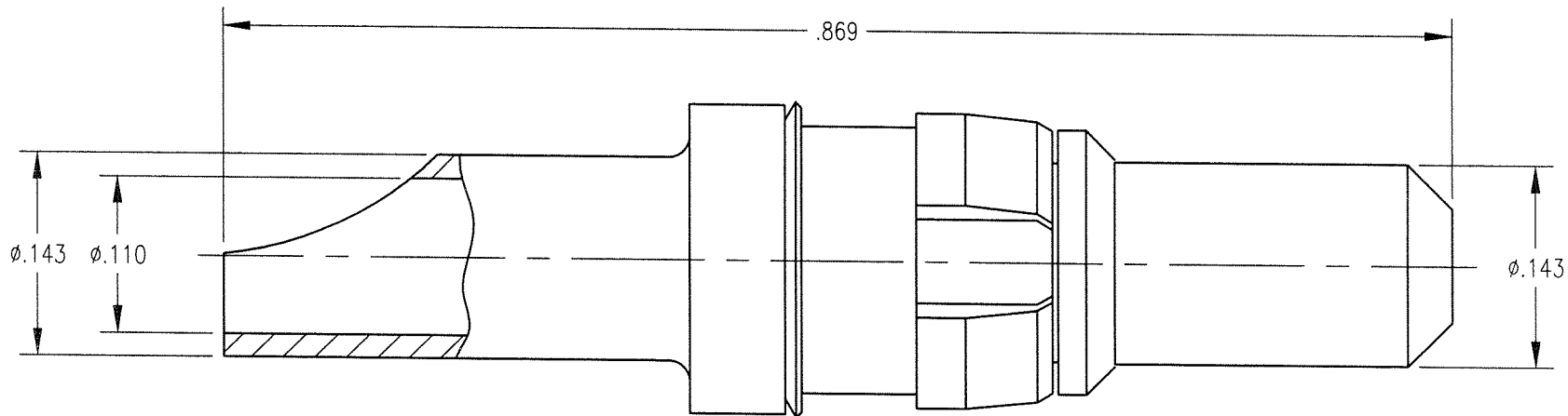


DWG. NO. 220-510-0001G

REV	DESCRIPTION	BY	DATE	APPD
D	NPR 2173	KJT	12/12/00	[Signature]



NOTES:

1. MATERIALS:
 - BODY: BRASS PER ASTM B16
 - CLIP RING: BERYLLIUM COPPER PER ASTM B194
 - SPRING WASHER: PHOSPHOR BRONZE PER ASTM B103
2. FINISH:
 - BODY: .000030 MIN. GOLD PER MIL-G-45204 OVER
.000050 MIN. NICKEL PER QQ-N-290
 - CLIP RING: .000100 MIN. NICKEL PER QQ-N-290 OVER
COPPER FLASH
 - SPRING WASHER: .000005 MIN. GOLD PER MIL-G-45024 OVER
.000050 MIN. NICKEL PER QQ-N-290
3. FOR USE WITH #12 AWG.

PER ASME Y14.5M-1994 UNLESS OTHERWISE SPECIFIED: DIMENSIONS ARE IN INCHES [MM]				Litton			
TOLERANCES: DECIMALS .xx ± 0.0254 xxx ± .005/0.127 ANGLES ± 2°				Winchester/Retconn 400 Park Road Waterbury, Connecticut 06725			
SCALE: 8:1				TITLE			
CUSTOMER DRAWING				20 AMP RDM HIGH POWER PLUG			
DRAWN	DATE	CHECKED	DATE	A 220-510-0001G			
KJT	12/12/00	[Signature]	12/12/00				
APPROVED	DATE	APPROVED	DATE	SHT.	OF	REV.	
[Signature]		[Signature]		1	1	D	