

**Two-Way Power Divider,
10 - 500 MHz**

**DS-109/DS-319
V3**

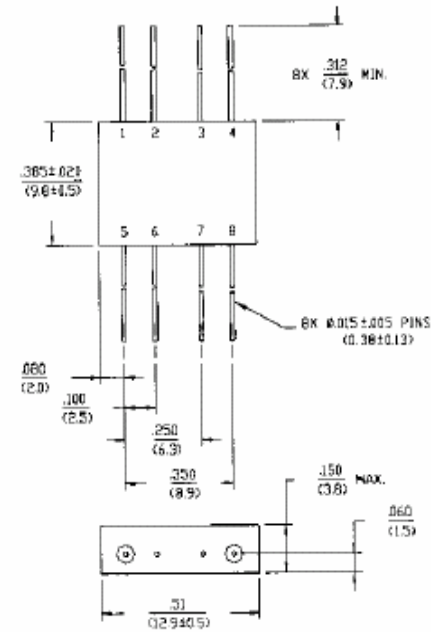
Features

- 1° Phase Balance Maximum
- 35 dB Typical Midband Isolation
- 1.1 Typical Midband VSWR
- VSWR: 1.2:1 Typical Midband
- Impedance: 50 Ohms Nominal
- Maximum Power Rating or Input Power: 1W Max.
- Internal Load Dissipation: 0.05 mW Max.
- MIL-STD-202 Screening Available

Description

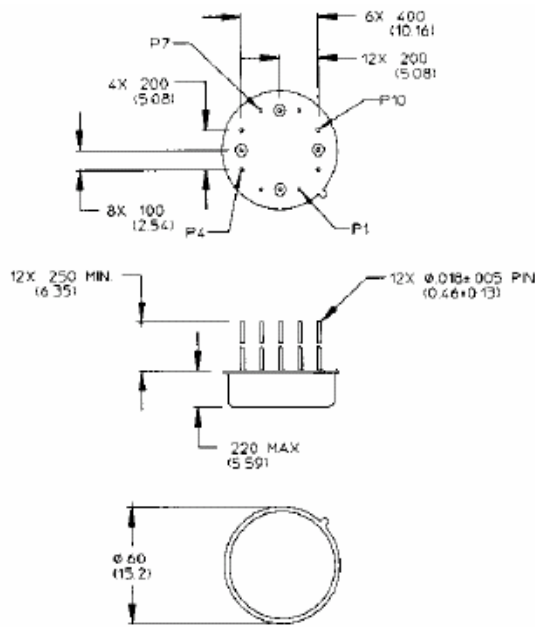
A Power Divider is ideally a lossless reciprocal device which can also perform vector summation of two or more signals and thus is sometimes called a power combiner or summer.

FP-2 (DS-109)



Dimensions in () are in mm
Unless Otherwise Noted .XXX = ±0.010 (XXX = ±0.25)
XX = ±0.02 (X = ±0.5)
WEIGHT (APPROX) 0.09 OUNCES 2.55 GRAMS

TO-8-2 (DS-319)



Bottom of Case is AC Ground
Dimensions in () are in mm
Unless Otherwise Noted .XXX = ±0.010 (XXX = ±0.25)
XX = ±0.02 (X = ±0.5)

Pin Configuration (DS-109)

| Pin No. | Function | Pin No. | Function |
|---------|----------|---------|----------|
| 1 | Σ | 5 | GND |
| 2 | GND | 6 | GND |
| 3 | GND | 7 | GND |
| 4 | Output C | 8 | Output D |

Pin Configuration (DS-319)

| Pin No. | Function | Pin No. | Function |
|---------|----------|---------|----------|
| 1 | GND | 7 | GND |
| 2 | Output D | 8 | Output C |
| 3 | GND | 9 | GND |
| 4 | GND | 10 | GND |
| 5 | Σ IN | 11 | GND |
| 6 | GND | 12 | GND |

**Two-Way Power Divider,
10 - 500 MHz**

**DS-109/DS-319
V3**

DS-109 Electrical Specifications¹: T_A = -55°C to +85°C

| Parameter | Test Conditions | Frequency | Units | Min | Typ | Max |
|-------------------|-----------------|--------------|-------|-----|-----|-------|
| Insertion Loss | Less Coupling | 10 - 500 MHz | dB | — | — | 0.6 |
| Isolation | — | 10 - 500 MHz | dB | 25 | — | — |
| Amplitude Balance | — | 10 - 500 MHz | dB | — | — | 0.15 |
| Phase Balance | — | 10 - 500 MHz | ° | — | — | 1 |
| VSWR | All Ports | 10 - 500 MHz | Ratio | — | — | 1.3:1 |

DS-319 Electrical Specifications¹: T_A = -55°C to +85°C

| Parameter | Test Conditions | Frequency | Units | Min | Typ | Max |
|-------------------|-----------------|------------------------------|----------------|--------|--------|----------------|
| Insertion Loss | Less Coupling | 10 - 200 MHz 10 - 500 MHz | dB dB | — — | — — | 0.6 0.9 |
| Isolation | — | 10 - 500 MHz | dB | 25 | — | — |
| Amplitude Balance | — | 10 - 200 MHz 10 - 500 MHz | dB dB | — — | — — | 0.15 0.2 |
| Phase Balance | — | 10 - 500 MHz | ° | — | — | 1 |
| VSWR | All Ports | 10 - 200 MHz 10 - 500 MHz | Ratio Ratio | — — | — — | 1.3:1 1.6:1 |

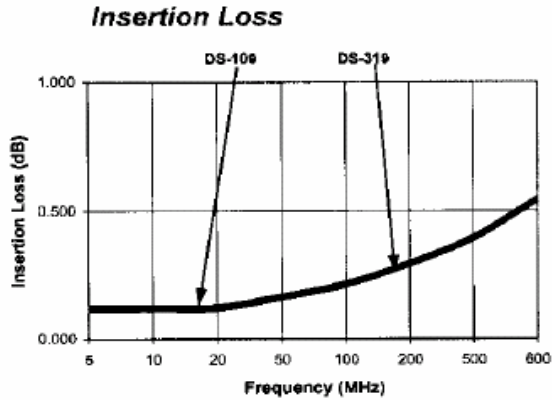
1. All specifications apply with 50 ohm source and load impedance.

**Two-Way Power Divider,
10 - 500 MHz**

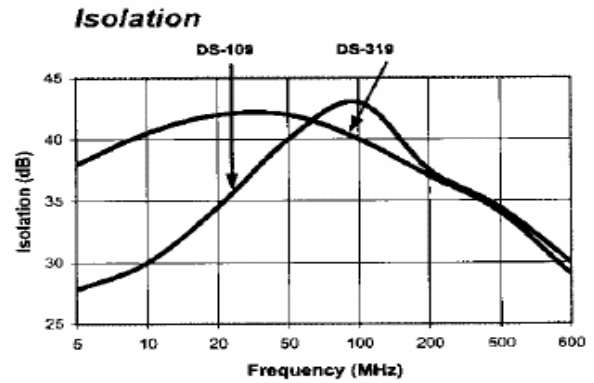
**DS-109/DS-319
V3**

Typical Performance Curves

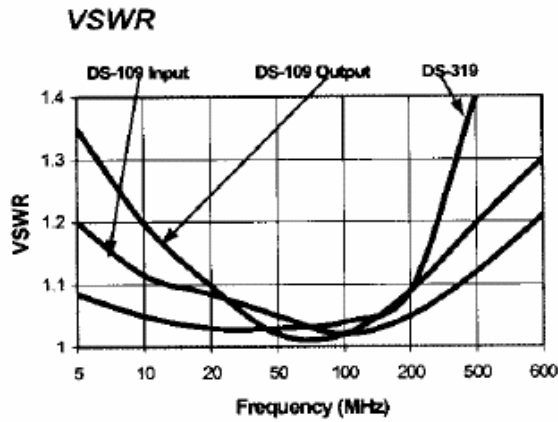
Insertion Loss - Ports Σ -C, Σ -D



Isolation - Ports C-D



VSWR



Ordering Information

| Part Number | Package |
|-------------|---------|
| DS-109 PIN | FP-2 |
| DS-319 PIN | TO-8-2 |