

**PLEASE CHECK WWW.MOLEX.COM FOR LATEST PART INFORMATION**

**Part Number:** **0473004000**  
**Status:** **Active**  
**Overview:** slimline serial ata odd connectors  
**Description:** 1.00mm(.039"), 1.27mm (.050") Pitch Slimline Serial ATA Plug for Optical Disk Drive, Right Angle, SMT, Gold (Au) Flash Plating, with Pegs, Lead-free

**Documents:**

[3D Model](#) [Product Specification PS-47300-001 \(PDF\)](#)  
[Drawing \(PDF\)](#) [RoHS Certificate of Compliance \(PDF\)](#)

**Agency Certification**

CSA LR 19980

**General**

Product Family PCB Headers  
 Series 47300  
 Application Board-to-Board  
 Comments SMT Type  
 Overview slimline serial ata odd connectors  
 Product Name Serial ATA, Slimline Serial ATA

**Physical**

Breakaway No  
 Circuits (Loaded) 13  
 Circuits (maximum) 13  
 Durability (mating cycles max) 500  
 First Mate / Last Break Yes  
 Flammability 94V-0  
 Glow-Wire Compliant No  
 Guide to Mating Part Yes  
 Keying to Mating Part Yes  
 Lock to Mating Part No  
 Material - Plating Mating Gold  
 Material - Plating Termination Tin  
 Material - Resin High Temperature Thermoplastic  
 Number of Rows 1  
 Orientation Right Angle  
 PCB Locator Yes  
 PCB Retention Yes  
 Packaging Type Embossed Tape on Reel  
 Pitch - Mating Interface (in) 0.039 In, 0.050 In  
 Pitch - Mating Interface (mm) 1.00 mm, 1.27 mm  
 Pitch - Term. Interface (in) 0.039 In, 0.050 In  
 Pitch - Term. Interface (mm) 1.00 mm, 1.27 mm  
 Plating min: Mating (µin) 2  
 Plating min: Mating (µm) 0.05  
 Plating min: Termination (µin) 39  
 Plating min: Termination (µm) 1  
 Polarized to Mating Part Yes  
 Polarized to PCB Yes  
 Stackable No  
 Temperature Range - Operating -35°C to +85°C  
 Termination Interface: Style Surface Mount

**Electrical**

Current - Maximum per Contact 1.5A

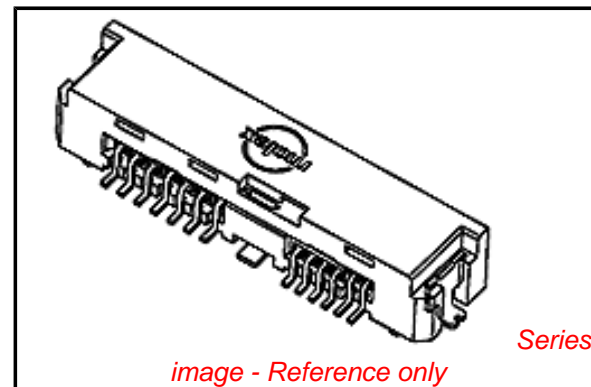


image - Reference only

**EU RoHS**

**ELV and RoHS  
 Compliant**  
**REACH SVHC  
 Not Reviewed**  
**Halogen-Free  
 Status  
 Not Reviewed**

**China RoHS**



**Need more information on product  
 environmental compliance?**

Email [productcompliance@molex.com](mailto:productcompliance@molex.com)  
 For a multiple part number RoHS Certificate of Compliance, [click here](#)

Please visit the [Contact Us](#) section for any non-product compliance questions.

**Search Parts in this Series**

47300Series

**Mates With**

47300 Slimline Serial ATA Plug

Voltage - Maximum

15V DC

**Material Info**

**Reference - Drawing Numbers**

Packaging Specification

PK-47300-001

Product Specification

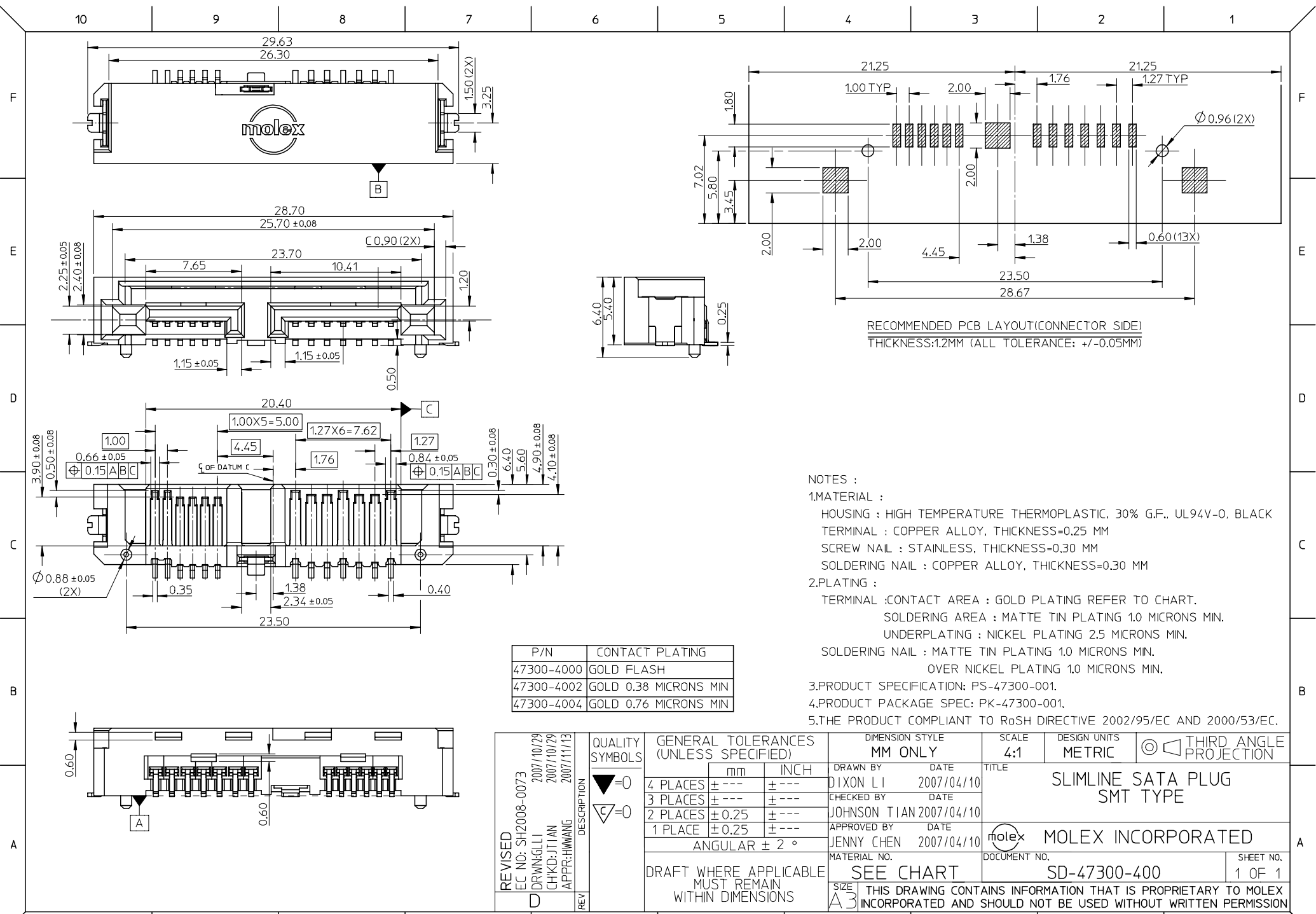
PS-47300-001

Sales Drawing

SD-47300-400

This document was generated on 05/26/2010

**PLEASE CHECK [WWW.MOLEX.COM](http://WWW.MOLEX.COM) FOR LATEST PART INFORMATION**



RECOMMENDED PCB LAYOUT(CONNECTOR SIDE)  
THICKNESS:1.2MM (ALL TOLERANCE: +/-0.05MM)

- NOTES :
- MATERIAL :  
HOUSING : HIGH TEMPERATURE THERMOPLASTIC, 30% G.F., UL94V-0, BLACK  
TERMINAL : COPPER ALLOY, THICKNESS=0.25 MM  
SCREW NAIL : STAINLESS, THICKNESS=0.30 MM  
SOLDERING NAIL : COPPER ALLOY, THICKNESS=0.30 MM
  - PLATING :  
TERMINAL :CONTACT AREA : GOLD PLATING REFER TO CHART.  
SOLDERING AREA : MATTE TIN PLATING 1.0 MICRONS MIN.  
UNDERPLATING : NICKEL PLATING 2.5 MICRONS MIN.  
SOLDERING NAIL : MATTE TIN PLATING 1.0 MICRONS MIN.  
OVER NICKEL PLATING 1.0 MICRONS MIN.
  - PRODUCT SPECIFICATION: PS-47300-001.
  - PRODUCT PACKAGE SPEC: PK-47300-001.
  - THE PRODUCT COMPLIANT TO RoSH DIRECTIVE 2002/95/EC AND 2000/53/EC.

P/N	CONTACT PLATING
47300-4000	GOLD FLASH
47300-4002	GOLD 0.38 MICRONS MIN
47300-4004	GOLD 0.76 MICRONS MIN

REVISED	EC NO: SH2008-0073	DESCRIPTION
	DRWN:GLLI	QUALITY SYMBOLS
	CHKD:JTIAN	GENERAL TOLERANCES (UNLESS SPECIFIED)
	APPR:HWANG	QUALITY SYMBOLS

QUALITY SYMBOLS	GENERAL TOLERANCES (UNLESS SPECIFIED)
$\nabla=0$	mm
$\sphericalangle=0$	INCH
	4 PLACES ± --- ± ---
	3 PLACES ± --- ± ---
	2 PLACES ± 0.25 ± ---
	1 PLACE ± 0.25 ± ---
	ANGULAR ± 2 °
	DRAFT WHERE APPLICABLE MUST REMAIN WITHIN DIMENSIONS

DIMENSION STYLE		SCALE	DESIGN UNITS	THIRD ANGLE PROJECTION	
MM ONLY		4:1	METRIC	THIRD ANGLE PROJECTION	
DRAWN BY	DATE	TITLE			
DIXON LI	2007/04/10	SLIMLINE SATA PLUG SMT TYPE			
CHECKED BY	DATE	MOLEX INCORPORATED			
JOHNSON TIAN	2007/04/10				
APPROVED BY	DATE	DOCUMENT NO.			
JENNY CHEN	2007/04/10	SD-47300-400			
MATERIAL NO.		SHEET NO.			
		1 OF 1			
SIZE	THIS DRAWING CONTAINS INFORMATION THAT IS PROPRIETARY TO MOLEX INCORPORATED AND SHOULD NOT BE USED WITHOUT WRITTEN PERMISSION				
A3					