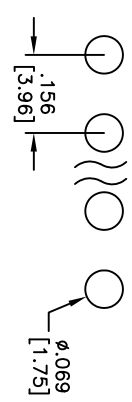
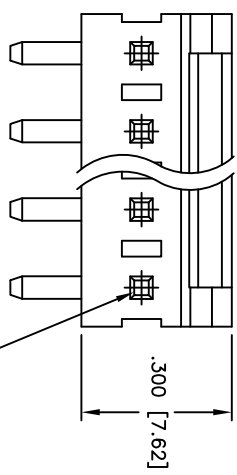
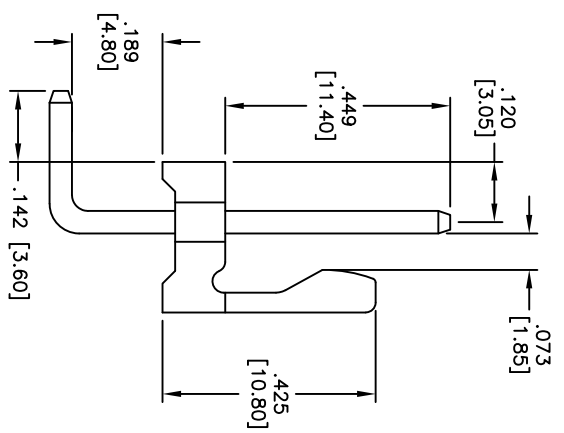
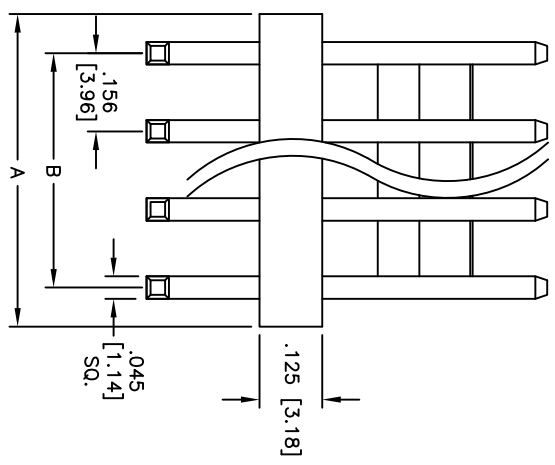


APPROVED: _____
 DATE: _____ TITLE: _____

Rev	AWO #	Description	Date	Appr
-		RELEASED	6/18/10	
A		ECN	12/8/10	



RECOMMENDED PCB LAYOUT



SPECIFICATIONS:
 Material: PA66, glass reinforced, rated UL 94V-0
 Insulator color: White
 Contact: Brass, Tin or Ni plated

Electrical:
 Current rating: 7 Amps max
 Contact resistance: 20mohms max
 Insulation resistance: 1,000 Mohms min
 Dielectric withstanding voltage: 1,000 VAC for 1 minute
 Temperature Rating: -40°C to +85°C
 Operating temperature: -40°C to +85°C
 Environmental:
 Lead free, RoHS compliant
 Recommended soldering temp: 235°C for 5 seconds

Positions: 2 thru 20
 A = .156 [3.96] x No. of Positions
 B = .156 [3.96] x No. of Spaces

UNLESS OTHERWISE SPECIFIED
 ALL DIMENSIONS ARE INCHES [MM]
 TOLERANCES: EXCEPT AS NOTED

INCHES	HOLES
.X ± .10	± .10
.XX ± .020	± .015
.XXX ± .015	± .010

APPROVALS: _____ DATE: _____

DRAWN: DY 6/18/10
 CHECKED: _____
 APPROVED: _____

ADAM TECH
 909 Railway Avenue, Union, NJ 07083
 Phone: 908-687-5000 Fax: 908-687-5710

TITLE: .156 [3.96] HEADER, STRAIGHT

RECOMMENDED SOLDERING TEMP: 235°C FOR 5 SECONDS



SIZE	PART NO.	SCALE	SHEET 1 OF 1
X	LHD-XX-TRA-V0	NIS	A