

## Han 10HP-HTE-M25

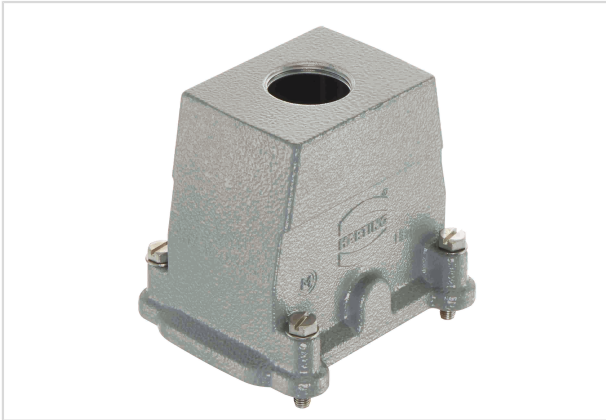


Image is for illustration purposes only. Please refer to product description.

|                    |   |
|--------------------|---|
| Part number        | 19 39 010 0426  |
| Specification      | Han 10HP-HTE-M25  |
| HARTING eCatalogue | <a href="https://b2b.harting.com/19390100426">https://b2b.harting.com/19390100426</a> |

### Identification

|                          |                |
|--------------------------|----------------|
| Category                 | Hoods/Housings |
| Series of hoods/housings | Han® HP        |
| Type of hood/housing     | Hood           |

### Version

|                      |                                       |
|----------------------|---------------------------------------|
| Locking type         | Screw locking                         |
| Size                 | 10 B                                  |
| Version              | Top entry                             |
| Cable entry          | 1x M25                                |
| Field of application | Hoods/housings for rough environments |

### Technical characteristics

|  |  |
|--|--|
| Tightening torque (screw locking)      | 3 Nm   |
| Limiting temperature                   | -40 ... +125 °C                                |
| Degree of protection acc. to IEC 60529 | IP66<br>IP68<br>IP69 / IPX9K acc. to ISO 20653 |

### Material properties

|                         |                      |
|-------------------------|----------------------|
| Material (hood/housing) | Aluminium die-cast   |
| Surface (hood/housing)  | Powder-coated        |
| Colour (hood/housing)   | RAL 7037 (dust grey) |
| Material (seal)         | NBR                  |
| Material (locking)      | Stainless steel      |



Pushing Performance

## Material properties

|                             |           |
|-----------------------------|-----------|
| RoHS                        | compliant |
| ELV status                  | compliant |
| China RoHS                  | e         |
| REACH Annex XVII substances | No        |
| REACH ANNEX XIV substances  | No        |
| REACH SVHC substances       | No        |

## Specifications and approvals

|                |                         |
|----------------|-------------------------|
| Specifications | EN 60664-1<br>IEC 61984 |
| CE             | Yes                     |

## Commercial data

|                                |  |
|--------------------------------|--|
| Packaging size                 | 1  |
| Net weight                     | 258 g                                    |
| Country of origin              | Germany                                  |
| European customs tariff number | 85389099                                 |
| eCl@ss                         | 27440202 Shell for industrial connectors |