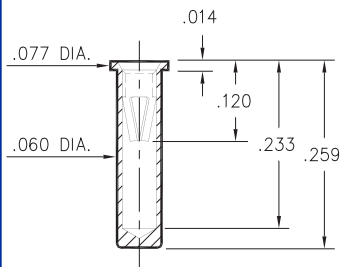
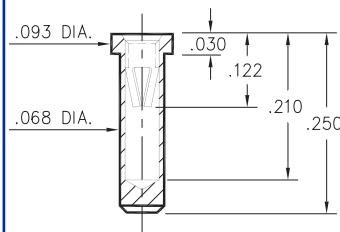


0295



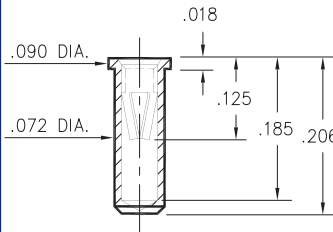
0295-0-15-XX-06-XX-10-0
Solder mount in .063 min. mounting hole
Also available on 24mm wide carrier tape: 1,000 parts per 13" reel.
Order as: 0295-0-57-XX-06-XX-10-0

0292



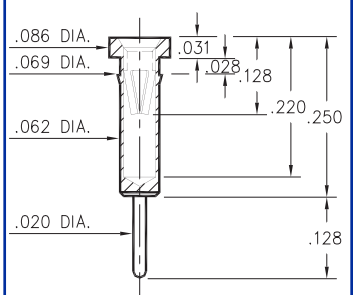
0292-0-15-XX-06-XX-10-0
Solder mount in .071 min. mounting hole

0294



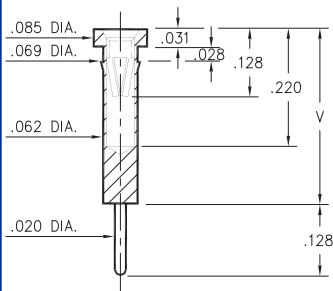
0294-0-15-XX-06-XX-10-0
Solder mount in .076 min. mounting hole

0398



0398-0-15-XX-06-XX-04-0
Press-fit in .066 mounting hole

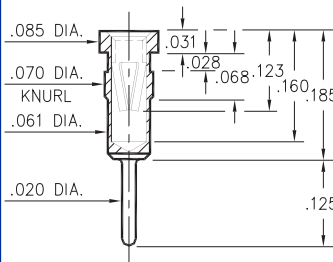
0397



0397-X-15-XX-06-XX-04-0
Press-fit in .066 mounting hole

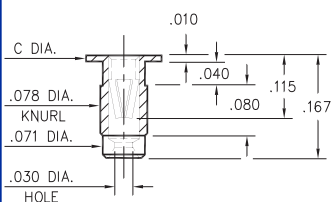
Basic Part Number	Length V
0397-0	.353
0397-1	.333
0397-2	.413

0297



0297-0-15-XX-06-XX-04-0
Press-fit in .067 mounting hole

9019/9039



90X9-X-19-XX-06-XX-10-0
Press-fit in .075 mounting hole

Basic Part Number	Head Dia. C
9019-0	.125
9039-0	.100

SPECIFICATIONS

SHELL MATERIAL:
Brass Alloy 360, 1/2 Hard

CONTACT MATERIAL:
Beryllium Copper Alloy 172, HT

DIMENSION IN INCHES
TOLERANCES ON:
LENGTHS: ±.005
DIAMETERS: ±.002
ANGLES: ± 2°

ORDER CODE: XXXX - X - 1X - XX - 06 - XX - XX - 0

BASIC PART # →

SPECIFY SHELL FINISH:

- 01 200μ" TIN/LEAD OVER NICKEL
- ◇ 80 200μ" TIN OVER NICKEL (RoHS)
- ◇ 15 10μ" GOLD OVER NICKEL (RoHS)

SPECIFY CONTACT FINISH:

- 01 200μ" TIN/LEAD OVER NICKEL
- ◇ 80 200μ" TIN OVER NICKEL (RoHS)
- ◇ 27 30μ" GOLD OVER NICKEL (RoHS)



↑ **CONTACT**

#06 CONTACT (DATA ON PAGE 221)