

Educational



SanDisk Cruiser Freedom is designed for today's active, mobile students, letting them store, share and transfer personal files. Educators can easily distribute digital content like textbooks, course packs, audio, video, web pages and worksheets directly to students' Cruiser Freedom drives through the Internet. Once downloaded, this content can be used online or offline. Cruiser Freedom is available in capabilities of 256MB, 512MB and 1GB. Some of the listed capacity is used for formatting and other functions and thus is not available for data storage.

It's easy to transfer, share and store files, replacing floppy disks and CDs. Its sleek design is engineered and reinforced for ruggedness. Packaged with two caps, the Cruiser Freedom can be attached to a backpack or worn about the neck. The Cruiser Freedom is divided into two parts: *open disk space* for personal storage and *FlashCP space*, a secure area for digital content. FlashCP for content downloads and SanDisk Plaza access requires Microsoft® Windows® XP or 2000.

Part #	Memory Capacity
	Freedom
SDUFD2AH-256	256MB
SDUFD2AH-0512	512MB
SDUFD2AH-1024	1GB
These products arrive in retail-style blister packs.	

Waterproof



Small, rugged and waterproof, this USB flash drive features a specially designed unique latching mechanism to safeguard against accidental loss or damage. Ideal for storing, transporting and accessing health records and other personal information where rugged, wearable storage is critical, such as in the healthcare and emergency rescue and response markets.

Part #	Memory Capacity
	Waterproof
SDUSB-101-0256	256MB
SDUSB-101-0512	512MB
SDUSB-101-1024	1GB

Worldwide Locations

Corporate Headquarters
601 McCarthy Blvd.
Milpitas, CA 95035
Phone: 408-801-1000
Fax: 408-801-8657

Western USA, British Columbia & Mexico
601 McCarthy Blvd.
Milpitas, CA 95035
Phone: 760-736-8000

Eastern USA, Canada & Central/South America
1533 Grommon Road
Naperville, IL 60654
Phone: 630-453-0944
Fax: 408-801-8657

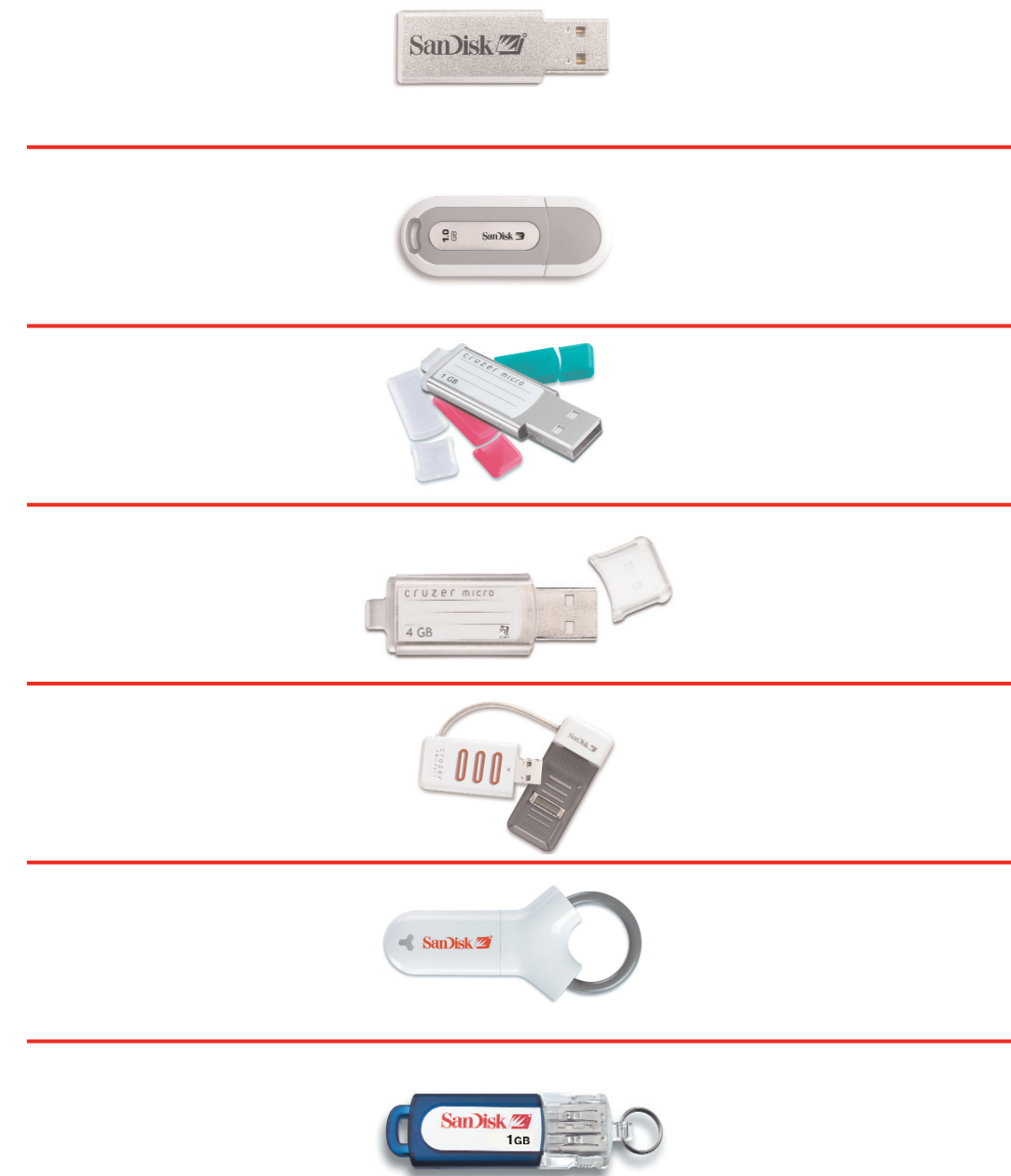
Europe
Carl-Zeiss-Strasse 47
85521 Riemerling
Munich, Germany

Korea
#14-202, Anyang International
Distribution Complex
555-9 Hoge-dong Dongan-gu
Anyang-city, Kyounggi-Do
431-081 South Korea
Phone: +82-31-479-0507
Fax: +82-31-479-0509

Japan
Nisso 15 Bldg. 8f
2-17-19 Shin-Yokohama
Kohoku-ku, Yokohama
Japan 222-0033
Phone: 81-45-474-0181
Fax: 81-45-474-0371

Asia/Pacific Rim
Suite 902 - 903
Bank of East Asia
Harbour View Centre
56 Gloucester Road
Wanchai
Hong Kong
Phone: 852-2712-0501
Fax: 852-2712-9385

Taiwan
1st Floor, No. 8, Lane 250
Sinhu 2nd Road
Neihu District
Taipei 114, Taiwan
Phone: 866-2-6601-5536
Fax: 866-2-6601-5537



Email inquiries:
OEMUSB@Sandisk.com



www.sandisk.com

SanDisk, the SanDisk logo and Cruiser are trademarks of SanDisk Corporation, registered in the United States and other countries. CruzerSync, CruzerPass and the SanGo logo are trademarks of SanDisk Corporation. PocketCache is a trademark of Kadena Systems. Liquidmetal is a registered trademark of Liquidmetal Technologies, Inc. U3, the U3 logo and the U3 smart logo are trademarks of U3, LLC. Other brand names mentioned herein are for identification purposes only and may be trademarks of their respective holder(s).

©2006 SanDisk Corporation. All rights reserved. 80-11-01346 10/06

USB Flash Drives for OEM



USB Flash Drives
for OEM



Solutions for Storage

- Core Module

- Basic USB Flash Drive

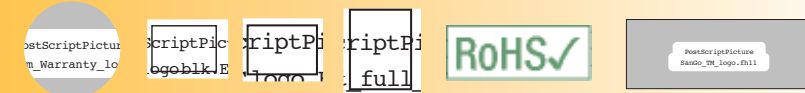
- Customizable

- Biometric

- Educational

- Waterproof

- All OEM products are warranted for one year against defects.
- All OEM USB products are compliant with the USB 2.0 Specifications.
- All certificates for compliance can be found at <http://www.sandisk.com/Oem/> and click on Environmental/regulatory.
- All OEM USB products are RoHS Compliant.



Core Module



The Core Module is intended to be used in applications where the product is hidden from sight, for example as memory expansion in a printer, or other such test equipment or data capture product. Mechanical specifications are available for customers intending to house the Core Module inside another device. This product is a mass storage class device only, and is bulk packaged.

Part #	Memory Capacity
	Metal Can
SDUFD2AA-256	256MB
SDUFD2AA-512	512MB
SDUFD2AA-1024	1GB
SDUFD2AA-2048	2GB
SDUFD2AA-4096	4GB

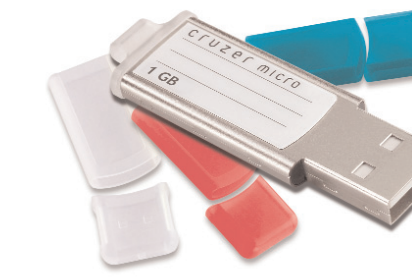
Basic USB Flash Drive



This mass storage class USB flash drive is small, compact and highly portable. It provides for easy customization via label or silk-screen markings—great for promotional giveaways. Several different types of metallic or plastic labels can be adhered, and mechanical dimensions are available. This product is a mass storage class device only, and is bulk packaged.

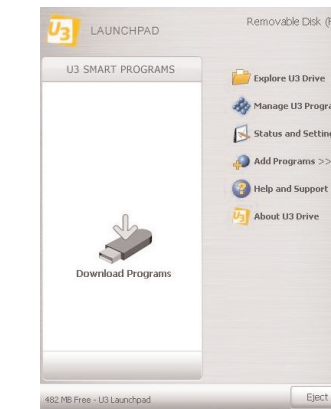
Part #	Memory Capacity
	OEM Micro
SDUFD2AB-256	256MB
SDUFD2AB-512	512MB
SDUFD2AB-1024	1GB
SDUFD2AB-2048	2GB
SDUFD2AB-4096	4GB

Customizable



Connect it to any computer with a USB port, and it makes storing, sharing and transferring your files a snap. And every Cruiser® Micro comes with extra caps and covers, in vibrant colors, plus a lanyard. This product is a mass storage class device only, and is bulk packaged.

Part #	Memory Capacity
	Micro with Skins
SDUFD2AD-256	256MB
SDUFD2AD-512	512MB
SDUFD2AD-1024	1GB
SDUFD2AD-2048	2GB
SDUFD2AD-4096	4GB



The OEM USB drive with OEM U3 launchpad allows developers and customers to customize their U3 software environment. This product is a U3-compliant CD and mass storage class device only, and is bulk packaged.

Both of these customizable products can be purchased with LiquidMetal® casings; for details, email to OEMUSB@sandisk.com.



Part #	Memory Capacity
	Micro with Skins
SDUFD2AK-512	512MB
SDUFD2AK-1024	1GB
SDUFD2AK-2048	2GB
SDUFD2AK-4096	4GB

Biometric



With built-in biometric security, Cruiser Profile delivers the ultimate in portable data security. This highly-secure product stores all your data and passwords, accessible only with the swipe of your fingerprint. Just plug in the drive, swipe your finger, and you can log-on to any of your stored protected areas in a snap with the exclusive CruiserPass™ password bank. You can use any host PC with your Cruiser Profile without having to install any cumbersome software or leave any trace on that PC.

Special two-piece design allows the most flexibility for the user. Just position the product and sensor for a convenient swipe. This allows flexibility for different USB port configurations, and the slide-on cap protects sensor for safe travel.

Cruiser Profile includes trial versions of CruiserSync™ (synchronization) and PocketCache™ (backup) software.

Part #	Memory Capacity
	Cruiser Profile
SDUFD2AG-1024	1GB
SDUFD2AG-2048	2GB