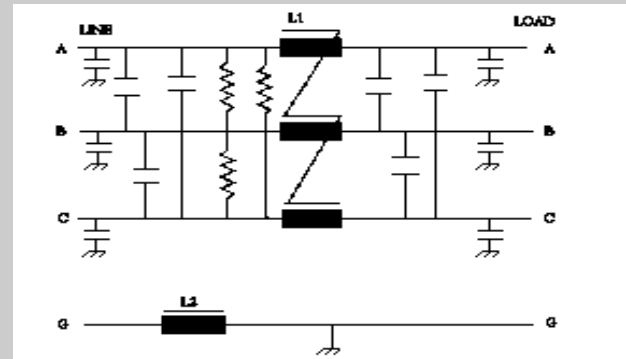
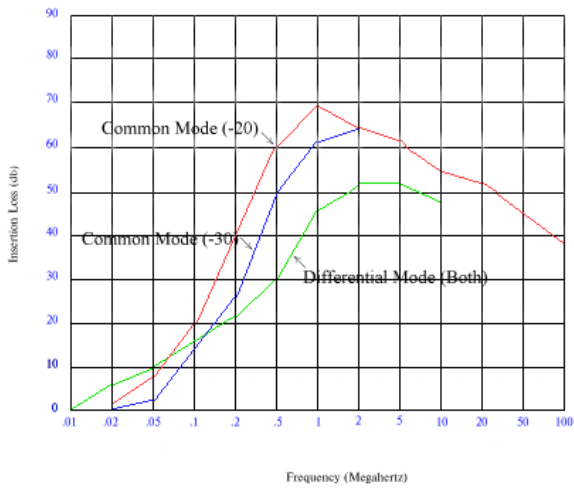


# JMK Inc.

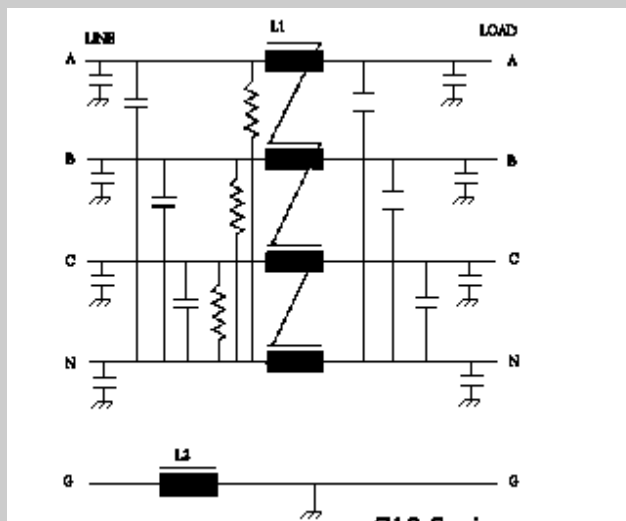
# 716/718 SERIES

The 0716 & 0718 series filters provide excellent general filtering for Wye or Delta power configurations. This series employs both differential mode and common mode insertion loss.

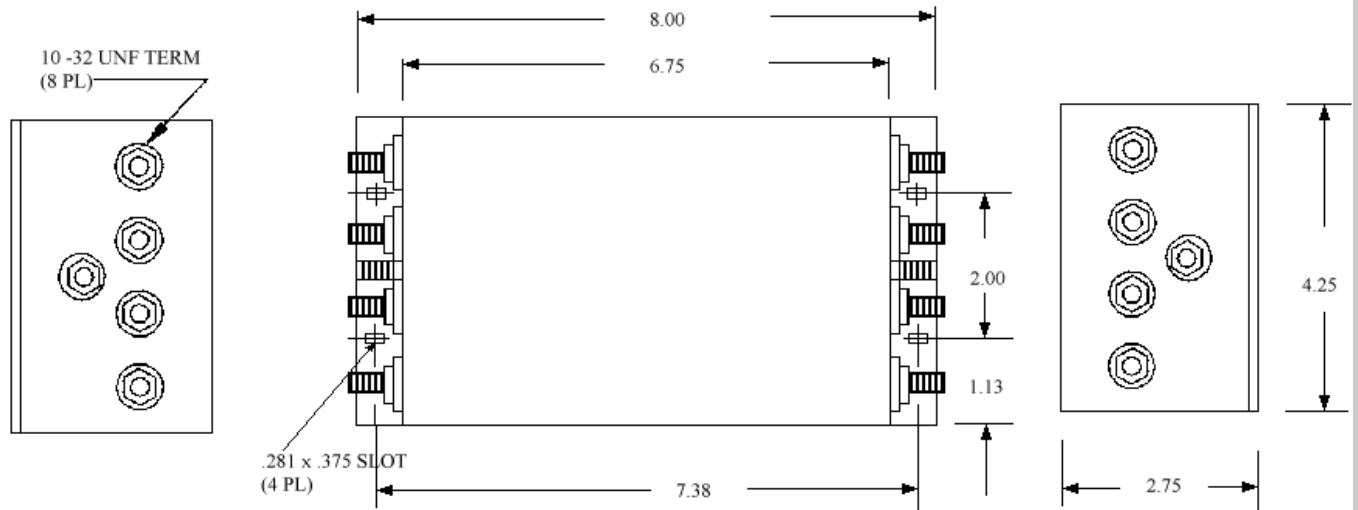
Operating Voltage= 250/480 Vac  
 Operating Current Max= 20,30 amp  
 Operating Frequency= 50-60Hz  
 Temperature Range= -20 to 50 deg. C  
 Die Withstand (Line to Case)= 1500V~ for 1 Min  
 Die Withstand (Line to Line)= 1500Vdc for 1 min  
 Leakage Current = 2.5 mA @ 250 VAC,560Hz  
 Discharge after 5.0 sec.= 34V Max  
 Agency Approvals = UL



**716 Series**



**718 Series**



USA JMK Inc 15 Caldwell Dr. Amherst, NH 03031 PH: 603 886-4100 FX: 603 886-4115  
 email: info@jmkfilters.com  
 EUR JMK Inc Glasgow G13 1DN Scotland UK PH: 44-(0) 7785310729 FX: 44-(0) 141 589 1884