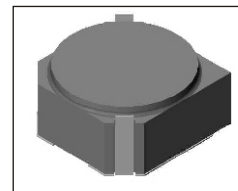


# SMT Power Inductor

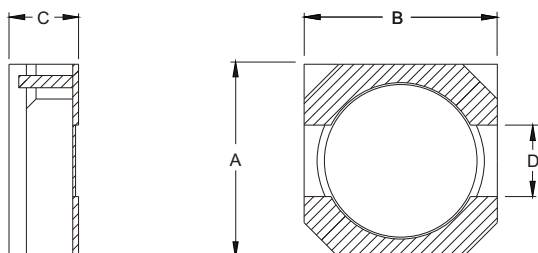
## SIL520 Type

### Features

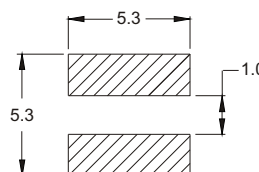
- RoHS compliant.
- Small size (4.8mm\*4.8mm), low profile (2.0mm max. height) SMD type.
- Magnetically shielded, suitable for high density mounting.
- High energy storage and low DCR.
- Provided with embossed carrier tape packing.
- Ideal for power source circuits, DC-DC converter, DC-AC inverters inductor application.
- In addition to the standard versions shown here, customized inductors are available to meet your exact requirements.



### Mechanical Dimension:



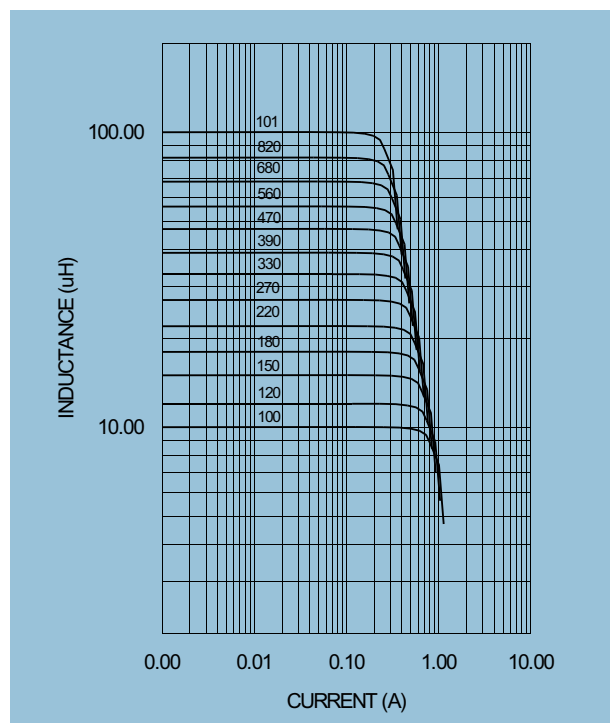
### RECOMMENDED PAD PATTERNS



UNIT : mm / inch  
 A = 5.0 / 0.197 Max.  
 B = 5.0 / 0.197 Max.  
 C = 2.0 / 0.079 Max.  
 D = 1.5 ± 0.1 / 0.059 ± 0.004

### Electrical Characteristics: At 25°C: 100KHz, 0.1V

PART NO.	L <sup>1</sup> (uH)	DCR (Ω) MAX	I <sub>rated</sub> <sup>2</sup> (Adc)
SIL520 - 1R0	1.0	0.035	2.90
SIL520 - 2R2	2.2	0.060	1.90
SIL520A - 2R2	2.2	0.065	2.40
SIL520 - 2R7	2.7	0.065	1.70
SIL520 - 3R3	3.3	0.080	1.50
SIL520A - 3R3	3.3	0.085	2.00
SIL520 - 3R9	3.9	0.090	1.40
SIL520 - 4R7	4.7	0.110	1.30
SIL520A - 4R7	4.7	0.125	1.50
SIL520B - 4R7	4.7	0.130	1.90
SIL520 - 5R6	5.6	0.120	1.20
SIL520 - 6R8	6.8	0.145	1.05
SIL520 - 8R2	8.2	0.160	1.00
SIL520 - 100	10.0	0.200	0.61
SIL520 - 120	12.0	0.210	0.56
SIL520 - 150	15.0	0.240	0.50
SIL520 - 180	18.0	0.338	0.48
SIL520 - 220	22.0	0.397	0.41
SIL520 - 270	27.0	0.441	0.35
SIL520 - 330	33.0	0.690	0.32
SIL520 - 390	39.0	0.709	0.30
SIL520 - 470	47.0	0.922	0.28
SIL520 - 560	56.0	1.080	0.26
SIL520 - 680	68.0	1.300	0.24
SIL520 - 820	82.0	1.560	0.22
SIL520 - 101	100.0	1.730	0.20
SIL520 - 121	120.0	2.390	0.18
SIL520 - 151	150.0	2.670	0.15
SIL520 - 181	180.0	4.000	0.14



1. Tolerance of inductance : ± 30%.
2. I<sub>rated</sub> is the DC current which cause the inductance drop less than 35% of its nominal inductance without current and the surface temperature of the part increase less than 45°C.
3. Operating temperature: -20°C to 105°C (including self-temperature rise).



**DELTA ELECTRONICS, INC.**

(TAOYUAN PLANT CPBG) 252, SAN YING ROAD, KUEISAN INDUSTRIAL ZONE, TAOYUAN SHIEN, 333, TAIWAN, R.O.C.

TEL: 886-3-3591968; FAX: 886-3-3591991

<http://www.deltaww.com>