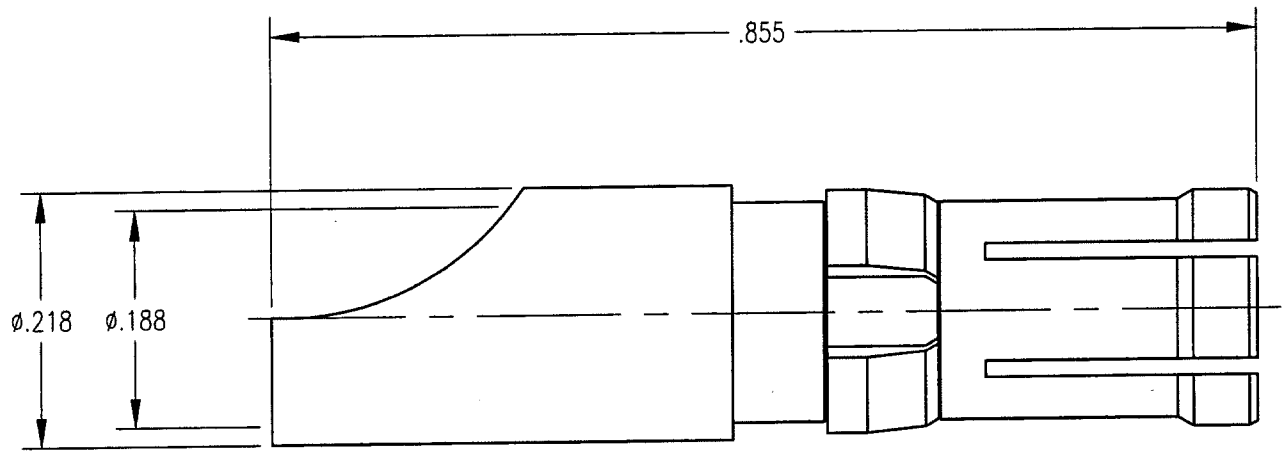


DWG. NO. 221-510-0000G

REV	DESCRIPTION	BY DATE	APPD
C	ECN 2364	KJT 2/8/00	LJS



NOTES:

1. MATERIALS:
 BODY: BERYLLIUM COPPER PER ASTM B196
 CLIP RING: BERYLLIUM COPPER PER ASTM B194
2. FINISH:
 BODY: .000030 MIN. GOLD PER MIL-G-45204 OVER
 .000050 MIN. NICKEL PER QQ-N-290
 CLIP RING: .000100 MIN. NICKEL PER QQ-N-290
 OVER COPPER FLASH

PER ASME Y14.5M-1994 UNLESS OTHERWISE SPECIFIED: DIMENSIONS ARE IN INCHES (MM) TOLERANCES: DECIMALS .XX ± .01/0.254 .XXX ± .005/0.127 ANGLES ± 2° SCALE: 6:1		Litton Winchester/Retconn 400 Park Road Waterbury, Connecticut 06795	
CUSTOMER DRAWING		TITLE 40 AMP POWER RECEPTACLE	
DRAWN JMC DATE 8/12/98	CHECKED PAT DATE 8/12/98	APPROVED KJT DATE 8/12/98	DATE 8/12/98
A		221-510-0000G	SH. OF REV. 1 1 C