

NPN TIP41-A-B-C

SILICON POWER TRANSISTORS

They are epitaxial-base NPN power transistors mounted in jedec TO-220 plastic package.
They are intended for use in medium power linear and switching applications.
PNP complements are TIP42-A-B-C
Compliance to RoHS.

ABSOLUTE MAXIMUM RATINGS

Symbol	Ratings		Value	Unit
V_{CBO}	Collector-Base Voltage	TIP41	40	V
		TIP41A	60	
		TIP41B	80	
		TIP41C	100	
V_{CEO}	Collector-Emitter Voltage	TIP41	40	V
		TIP41A	60	
		TIP41B	80	
		TIP41C	100	
V_{EBO}	Emitter-Base Voltage	TIP41	5	V
		TIP41A		
		TIP41B		
		TIP41C		
I_C	Collector Current	TIP41	6	A
		TIP41A		
		TIP41B		
		TIP41C		
I_{CM}	Collector Peak Current	TIP41	10	A
		TIP41A		
		TIP41B		
		TIP41C		

NPN TIP41-A-B-C

ABSOLUTE MAXIMUM RATINGS

Symbol	Ratings		Value	Unit
I_B	Base Current	TIP41	2	A
		TIP41A		
		TIP41B		
		TIP41C		
P_C	Power Dissipation	@ $T_c < 25^\circ$	65	Watts
		TIP41		
		TIP41A		
		TIP41B		
		TIP41C		
		@ $T_a < 25^\circ$	2	
		TIP41		
		TIP41A		
TIP41B				
TIP41C				
T_J	Junction Temperature	TIP41	150	$^\circ\text{C}$
		TIP41A		
		TIP41B		
		TIP41C		
T_s	Storage Temperature range	TIP41	-65 to +150	$^\circ\text{C}$
		TIP41A		
		TIP41B		
		TIP41C		

THERMAL CHARACTERISTICS

Symbol	Ratings		Value	Unit
R_{thJ-MB}	From junction to mounting base	TIP41	1.92	$^\circ\text{C/W}$
		TIP41A		
		TIP41B		
		TIP41C		
R_{thJ-A}	From junction to ambient in free air	TIP41	62.5	$^\circ\text{C/W}$
		TIP41A		
		TIP41B		
		TIP41C		

NPN TIP41-A-B-C

ELECTRICAL CHARACTERISTICS

TC=25°C unless otherwise noted

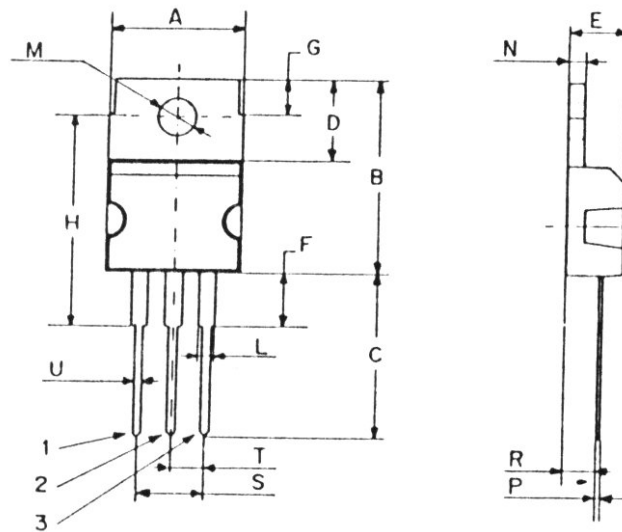
Symbol	Ratings	Test Condition(s)	Min	Typ	Max	Unit	
I_{CES}	Collector Cutoff Current	$I_E = 0, V_{CE} = V_{CEO}$	TIP41	-	-	0.4	Ma
			TIP41A				
			TIP41B				
			TIP41C				
I_{CEO}	Collector Cutoff Current	$I_B = 0, V_{CE} = 30V$	TIP41	-	-	0.7	mA
			TIP41A				
		$I_B = 0, V_{CE} = 60V$	TIP41B	-	-	0.7	
			TIP41C				
I_{EBO}	Emitter Cutoff Current	$V_{EB} = 5 V, I_C = 0$	TIP41	-	-	1	mA
			TIP41A				
			TIP41B				
			TIP41C				
V_{CEO}	Collector-Emitter Breakdown Voltage (*)	$I_C = 30 \text{ mA}, I_B = 0$	TIP41	40	-	-	V
			TIP41A	60	-	-	
			TIP41B	80	-	-	
			TIP41C	100	-	-	
$V_{CE(SAT)}$	Collector-Emitter saturation Voltage (*)	$I_C = 6 \text{ A}, I_B = 600 \text{ mA}$	TIP41	-	-	1.5	V
			TIP41A				
			TIP41B				
			TIP41C				
$V_{BE(on)}$	Base-Emitter Voltage (*)	$I_C = 6 \text{ A}, V_{CE} = 4 \text{ V}$	TIP41	-	-	2	V
			TIP41A				
			TIP41B				
			TIP41C				
h_{FE}	DC Current Gain (*)	$V_{CE} = 4 \text{ V}, I_C = 0.3 \text{ A}$	TIP41	30	-	-	-
			TIP41A				
			TIP41B				
			TIP41C				
		$V_{CE} = 4 \text{ V}, I_C = 3 \text{ A}$	TIP41	15	-	75	
			TIP41A				
			TIP41B				
			TIP41C				
h_{fe}	Small Signal Current Gain	$V_{CE} = 10 \text{ V}, I_C = 0.5 \text{ A}, f = 1 \text{ kHz}$	TIP41	20	-	-	-
			TIP41A				
			TIP41B				
			TIP41C				
f_T	Current Gain-Bandwidth Product	$V_{CE} = 10 \text{ V}, I_C = 0.5 \text{ A}$	TIP41	3	-	-	MHz
			TIP41A				
			TIP41B				
			TIP41C				

(*) Pulse Width $\approx 300 \mu\text{s}$, Duty Cycle $\angle 2.0\%$

NPN TIP41-A-B-C

MECHANICAL DATA CASE TO-220

DIMENSIONS (mm)		
	Min.	Max.
A	9,90	10,30
B	15,65	15,90
C	13,20	13,40
D	6,45	6,65
E	4,30	4,50
F	2,70	3,15
G	2,60	3,00
H	15,75	17,15
L	1,15	1,40
M	3,50	3,70
N	-	1,37
P	0,46	0,55
R	2,50	2,70
S	4,98	5,08
T	2,49	2,54
U	0,70	0,90



Pin 1 :	Base
Pin 2 :	Collector
Pin 3 :	Emitter
Case :	Collector

September 2012

Information furnished is believed to be accurate and reliable. However, Comset Semiconductors assumes no responsibility for the consequences of use of such information nor for any infringement of patents or other rights of third parties which may result from its use. Data are subject to change without notice. Comset Semiconductors makes no warranty, representation or guarantee regarding the suitability of its products for any particular purpose, nor does Comset Semiconductors assume any liability arising out of the application or use of any product and specifically disclaims any and all liability, including without limitation consequential or incidental damages. Comset Semiconductors' products are not authorized for use as critical components in life support devices or systems.