

# Monolithic crystal filter

## MQF30.0-4000/01

(preliminary specification)



### Application

- 2 pol filter
- i.f.- filter
- use in mobile and stationary transceivers

### Limiting values

		Unit	Value
Center frequency	$f_0$	MHz	30.0
Insertion loss		dB	$\leq 3.0$
Pass band at 1.0 dB		kHz	$\pm 20.00$
Ripple in pass band	$f_0 \pm 20.00$ kHz	dB	$\leq 1.0$
Stop band attenuation	$f_0 \pm 125$ kHz	dB	$\geq 20$ except spurious
Alternate attenuation		dB	$> 30$ except spurious
Group delay distortion	$f_0 \pm 20$ kHz	$\mu$ s	$< 3$

### Terminating impedance Z

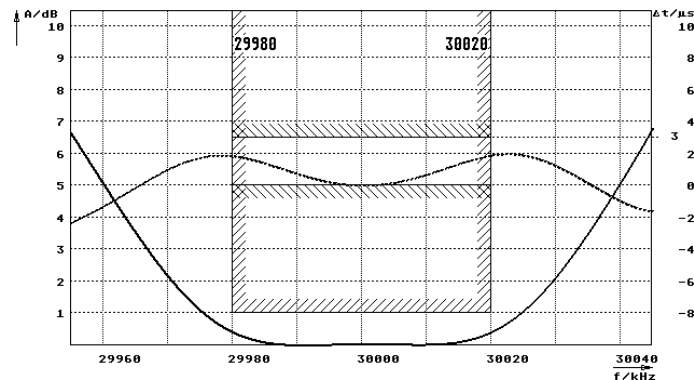
R1    C1	Ohm/pF	2600    0.80
R2    C2	Ohm/pF	2600    0.80

### Operating temp. range

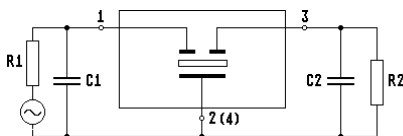
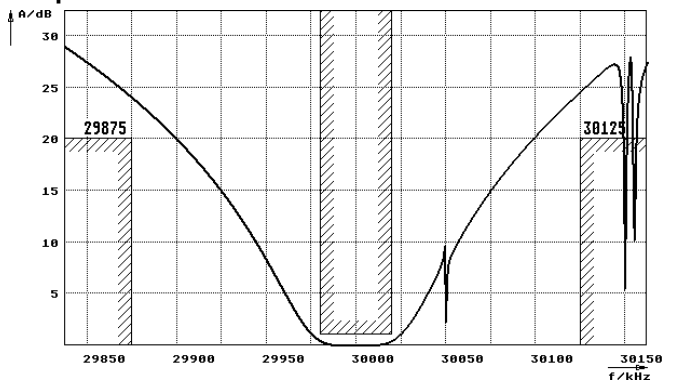
$^{\circ}$  C -20... +70

### Characteristics MQF30.0-4000/01

#### Pass band



#### Stop band



Pin connections:

- 1 Input
- 2 Ground-Input
- 3 Output
- 4 Ground-Output

