

MAIN FEATURE

1. Small size with capacity up to 10A.
2. Dielectric Strength up to 3,000VAC.
3. Surge Strength up to 10,000V.
4. UL Class F insulation available.
5. Halogen Free series available.
6. Comply with RoHS and REACH regulations.

CONTACT RATING

| Load Type | GJ (DM/LM/DB/LB) | GJ (D) |
|----------------------------|------------------|-----------|
| Rated Load (Resistive) | 10A 120VAC | 6A 125VAC |
| | 5A 250VAC | 3A 250VAC |
| | 10A 30VDC | 6A 30VDC |
| Contact capacity | TV-5 120VAC | - |
| Max. Allowable Voltage | AC 250V | AC 250V |
| | DC 30V | DC 30V |
| Max. Allowable Current | 10A | 6A |
| Max. Allowable Power Force | 1,250VA | 750VA |
| | 300W | 180W |
| Contact Material | Ag Alloy | Ag Alloy |
| Contact Form | SPST | SPDT |

APPLICATION

Domestic Appliances, Office Machines, Audio Equipment, Car Use...etc.

PERFORMANCE (AT INITIAL VALUE)

- Contact Resistance 100 mΩ Max.@1A,6VDC
- Operate Time..... 10 mSec. Max.
- Release Time 4 mSec. Max.
- Dielectric Strength:
 - Between Coil & Contact
 - GJ-D 2,500VAC
 - GJ-DM(LM) 3,000VAC at 50/60 Hz
for one minute
 - Between Contacts 1,000VAC at 50/60 Hz
for one minute
- Surge Strength 10,000V (between coil & contact 1.2x50μSec.)
- Insulation Resistance 100 MegaΩ Min. at 500VDC
- Max. On/Off Switching:
 - Electrical 6 Cycles per Minute
 - Mechanical..... 300 Cycles per Minute
- Temperature Range -30~105°C
- Humidity Range 45~+85% RH.
- Coil Temperature Rise 40°C Max.(D Type)
35°C Max.(L Type)

- Vibration:
 - Destruction 10 to 55 to 10 Hz,0.75 mm single
amplitude (1.5mm double amplitude)
 - Malfunction 10 to 55 to 10 Hz,0.75 mm single
amplitude (1.5mm double amplitude)
- Shock:
 - Destruction 1,000 m/S²
 - Malfunction 100 m/S²
- Life Expectancy:
 - Mechanical 10⁷ Operations at No
Load condition
 - Electrical 10⁵ Operations at Rated
Resistive Load
- Weight about 5.4 g.

SAFETY STANDARD & FILE NUMBER

- GJ-DM/LM Type:
 - UL & C-UL E141060
 - TÜV R9754184
- GJ-D Type:
 - UL & C-UL E141060
 - TÜV R50018123

COIL SPECIFICATION (AT 20°C)

| Coil Sensitivity | Nominal Voltage (VDC) | Nominal Current (mA) | Coil Resistance ($\Omega \pm 10\%$) | Power Consumption (W) | Pull-In Voltage (VDC) | Drop-Out Voltage (VDC) | Maximum Allowable Voltage (VDC) |
|------------------------|-----------------------|----------------------|---------------------------------------|-----------------------|-----------------------|------------------------|---------------------------------|
| GJ-D GJ-DM GJ-DB | 3 | 150 | 20 | Abt. 0.45 | 75% Maximum | 5% Minimum | 120% |
| | 5 | 91 | 55 | | | | |
| | 6 | 75 | 80 | | | | |
| | 9 | 50 | 180 | | | | |
| | 12 | 37.5 | 320 | | | | |
| GJ-LM GJ-LB | 24 | 18.8 | 1,280 | Abt. 0.2 | | | |
| | 3 | 67 | 45 | | | | |
| | 5 | 40 | 125 | | | | |
| | 6 | 33.3 | 180 | | | | |
| | 9 | 22.5 | 400 | | | | |
| | 12 | 16.7 | 720 | | | | |
| | 24 | 8.3 | 2,880 | | | | |

ORDERING INFORMATION

GJ - SS - 1 12 D M F

Insulation System:

Nil: Standard Class

F: Class F

Contact Form:

Nil: One Form C

M: One Form A

B: One Form B

Coil Sensitivity:

D: Standard DC

L: High DC

Coil Voltage:

03: 3V, 05: 5V, 06: 6V, 09: 9V, 12: 12V, 24: 24V

Number of Pole:

1: One Pole

Type of Sealing:

SS: RT II Flux Proofed

SH: RT III Wash Tight

Type:

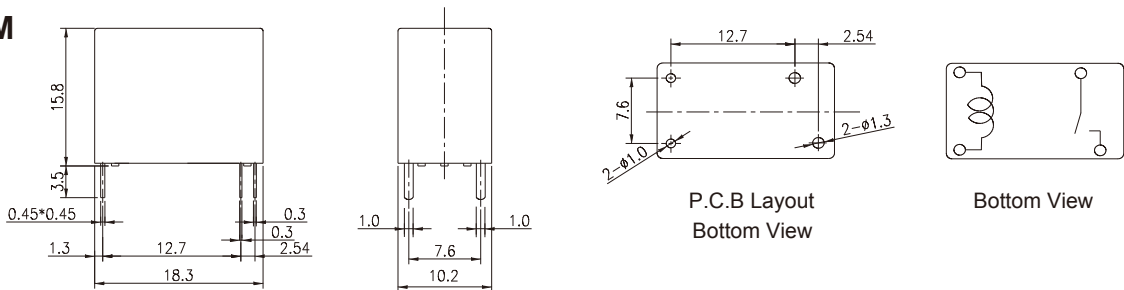
GJ

CLASSIFICATION

| Model | GJ | | | | |
|------------------|------------------|-------------|-------------|--------------|-------------|
| Coil Sensitivity | Standard DC Coil | | | High DC Coil | |
| Contact Form | 1C | 1A | 1B | 1A | 1B |
| Flux Proofed | GJ-SS-1□□D | GJ-SS-1□□DM | GJ-SS-1□□DB | GJ-SS-1□□LM | GJ-SS-1□□LB |
| Wash Tight | GJ-SH-1□□D | GJ-SH-1□□DM | GJ-SH-1□□DB | GJ-SH-1□□LM | GJ-SH-1□□LB |

DIMENSION ($\leq 5\text{mm} \pm 0.2\text{mm}$, $> 5\text{mm} \pm 0.3\text{mm}$, the tolerance of PCB thru hole: $+0.1\text{mm}$)

GJ-DM/LM



GJ-D

