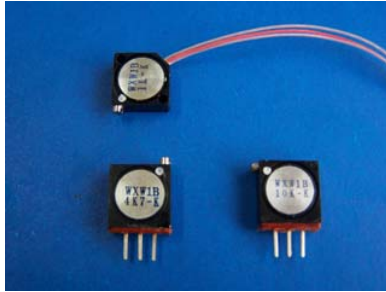


WXW1B Square Trimmer Potentiometer



Features

- Multiturn / Wirewound
- Industrial / Sealed
- Top and side adjust types (1,2,3 most popular)

Electrical Characteristics

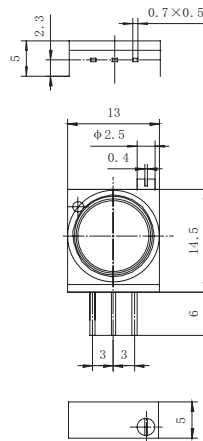
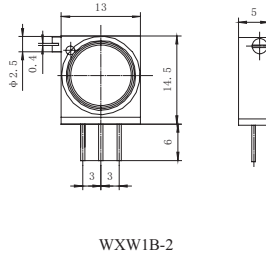
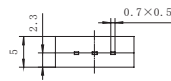
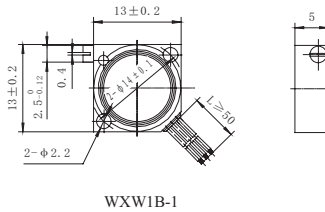
Standard Resistance Range
100 to 15K ohms
(see standard resistance table)
Resistance Tolerance
±10% or ±5% std.
(tighter tolerance available)
Absolute Minimum Resistance
5%R max.
Insulation Resistance
500 vdc
1,000 Megohms min.
Dielectric Strength
101.3 kPa 500 vac
11.59 kPa 200 vac
Adjustment Angle
32 turns min

Environmental Characteristics

Power Rating (100 volts max.)
0.5 watt (70°C), 0 watt (125°C)
Temperature Range
-55°C to +125°C
Temperature Coefficient
±100ppm/°C
Vibration
98 m/s²
(2% Δ TR; 3% Δ VR)
Shock
390 m/s²
(2% Δ TR; 2% Δ VR)
Load Life
1,000 hours 0.5 watt @ 70°C
(5% Δ TR; 8% or 8 ohm, Whichever is greater, CRV)
Rotational Life
200 cycles
(5% Δ TR; 8% or 8 ohm, Whichever is greater, CRV)

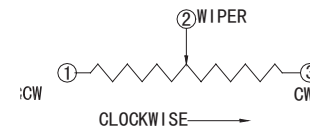
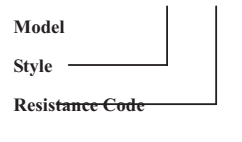
Physical Characteristics

Mechanical Angle
360°
Torque
20 mN • m max.



How to order

WXW1B-1-102



Standard Resistance Table

Resistance (Ohms)	Resistance Code
100	101
200	201
500	501
1,000	102
2,000	202
5,000	502
10,000	103
20,000	203
25,000	253
50,000	503
100,000	104
200,000	204
250,000	254
500,000	504
1,000,000	105
2,000,000	205

Special resistance available
Detail Specification: Q/RYS07-2002