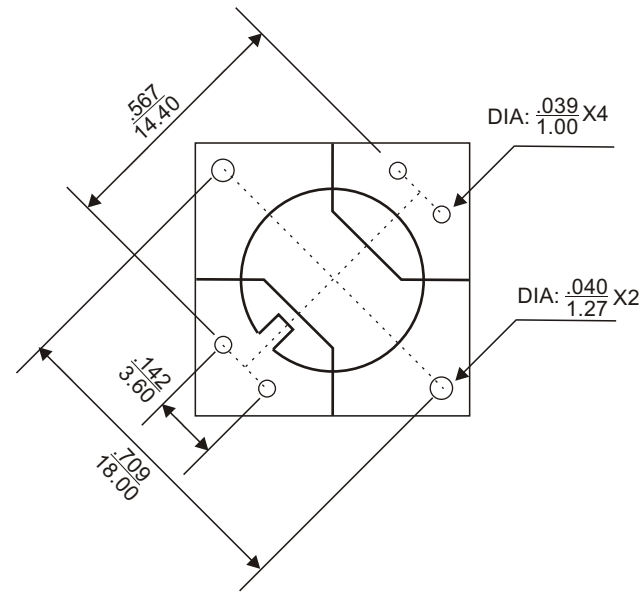
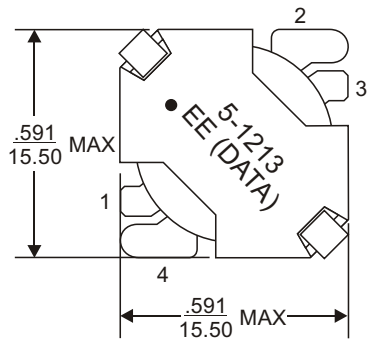


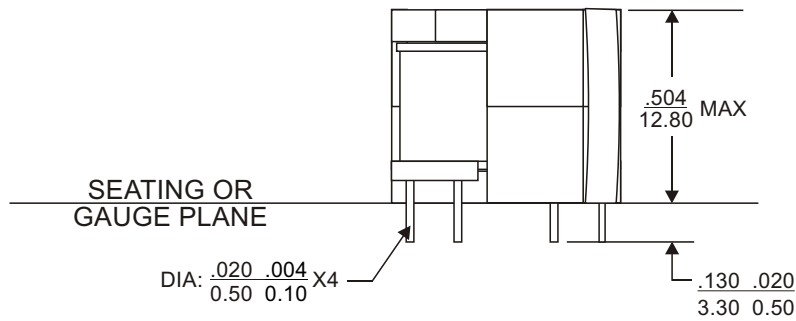
REVISIONS			
REV.	DESCRIPTION	ECN NO.	DATE
01	FIRST RELEASE FOR RFQ#A2013-13088	N/A	05/14/13
02	UPDATE PCB LAYOUT AS PER CUSTOMER REQUEST	EE14884	07/15/13

**PAGE 4 IS FOR INTERNAL USE**

PART NUMBER		PART DESCRIPTION		TITLE										
835-01213F		RoHS compliant per EU Directive 2011/65/EU		XFMR, RM6, TH, 4 PIN										
<p align="center"><b><u>WARNING !</u></b></p> <p>ALL SHEETS OF THIS DOCUMENT ARE CONTROLLED DOCUMENTATION AND ARE NOT TO BE RELEASED OUTSIDE OF E&amp;E OR ITS SUB-CONTRACTORS WITHOUT AUTHORIZATION.</p>		UNLESS OTHERWISE SPECIFIED, DIMENSIONS ARE IN INCH/mm.		E & E Magnetic Products Ltd.										
		APPROVALS		DATE										
		DRAWN BY		FW NIE		07/15/13								
		PROJ. ENG		S. HONG		07/15/13								
		APPROVED BY		J. YANG		07/15/13								
TOLERANCE ARE:		Q.A.		835-01213F										
<table border="0"> <tr> <td>INCH</td> <td>mm</td> <td>ANGLE</td> </tr> <tr> <td>.XXX .005 .XX .13 X.X 0.3</td> <td></td> <td></td> </tr> <tr> <td>.XX .02 .X .5 X. 1</td> <td></td> <td></td> </tr> </table>		INCH	mm	ANGLE	.XXX .005 .XX .13 X.X 0.3			.XX .02 .X .5 X. 1			D. LUO		07/15/13	
INCH	mm	ANGLE												
.XXX .005 .XX .13 X.X 0.3														
.XX .02 .X .5 X. 1														
				DRAWING NO./MODEL										
				835-01213F										
				REV										
				02										
				SCALE										
				DO NOT SCALE										
				PAGE 1 OF 4										



PCB LAYOUT



SEATING OR  
GAUGE PLANE

## MECHANICAL OUTLINE



E & E Magnetic Products Ltd.

DRAWING NO./MODEL

835-01213F

REV

02

SCALE

DO NOT SCALE

PAGE

2

OF

4

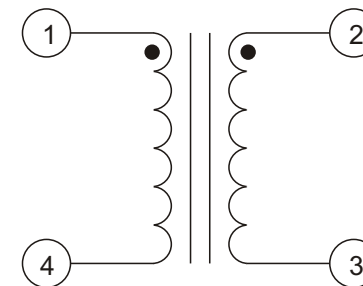
1. Dimensions are specified in  $\frac{\text{inches}}{\text{mm}}$  with higher precedence in mm.

2. Unless otherwise specified, all tolerance are  $\frac{.010}{0.25}$ .


**ELECTRICAL SPECIFICATION @25 C:**

PARAMETERS	UNIT	LIMITS
Turns Ratio(1-4):(2-3)	-	1 : 1 1%
Polarity	-	per schematic
Ls(1-4)@10kHz, 0.1Vrms	mH	4.60 Min
Ls(2-3)@10kHz, 0.1Vrms	mH	4.60 Min
DCR(1-4)		0.25 Typ 0.35 Max
DCR(2-3)		0.30 Typ 0.40 Max
Hipot(2-3):(4-1), 5mA, 2 Second	Vrms	500

3. Operating temperature: 0 C to +85 C.



**SCHEMATIC**

 <b>E &amp; E Magnetic Products Ltd.</b>		
DRAWING NO./MODEL		REV
<b>835-01213F</b>		<b>02</b>
SCALE	PAGE	OF
<b>DO NOT SCALE</b>	<b>3</b>	<b>4</b>