

1. PART NO. EXPRESSION :

SSC04021R0YZF-□□

(a) (b) (c) (d)(e)(f) (g)

(a) Series code

(b) Dimension code

(c) Inductance code : 1R0 = 1.0uH

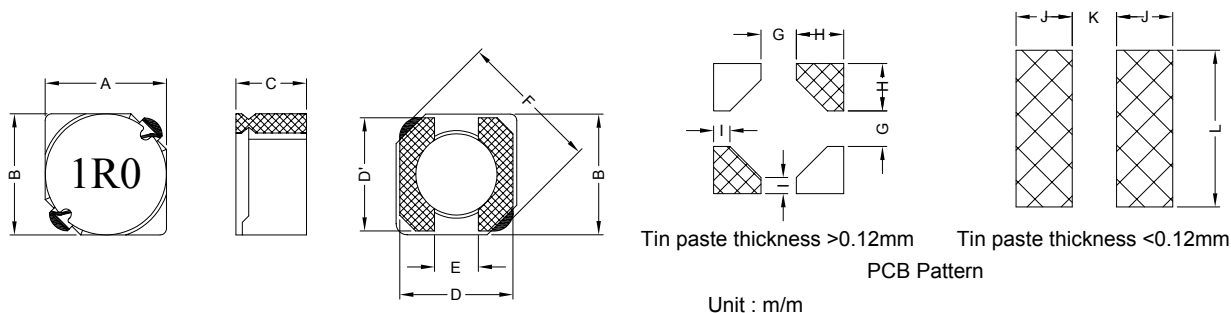
(d) Tolerance code : Y = ±30%

(e) X, Y, Z : Standard part

(f) F : RoHS Compliant

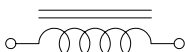
(g) 11 ~ 99 : RoHS Compliant

2. CONFIGURATION & DIMENSIONS :

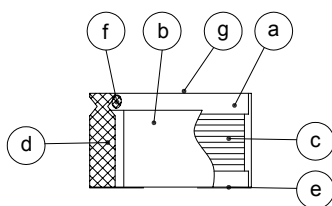


A	B	C	D	D'	E	F
4.70±0.3	4.70±0.3	2.00 Max.	4.50 Ref.	4.50 Ref.	1.50 Ref.	6.90 Max.
G	H	I	J	K	L	
1.70 Ref.	1.80 Ref.	0.80 Ref.	1.90 Ref.	1.50 Ref.	5.30 Ref.	

3. SCHEMATIC :



4. MATERIALS :



(a) Core : DR Ferrite Core

(b) Core : RI Ferrite Core

(c) Wire : Enamelled Copper Wire

(d) Terminal : Au+Ni Copper Plate

(e) Adhesive : Epoxy

(f) Adhesive : Epoxy

(g) Ink : Bon Margue



RoHS Compliant

NOTE : Specifications subject to change without notice. Please check our website for latest information.

01.10.2010



SUPERWORLD ELECTRONICS (S) PTE LTD

PG. 1

5. GENERAL SPECIFICATION :

- a) Temp. rise : 40°C Max. at rated current
- b) Rated current : Base on temp. rise & $\Delta L/L0A = 35\%$ Max.
- c) Storage temp. : -40°C to +125°C
- d) Operating temp. : -40°C to +85°C
- e) Resistance to solder heat : 260°C.10 secs

6. ELECTRICAL CHARACTERISTICS :

Part No.	Inductance (μ H)	Test Frequency (Hz)	RDC (m Ω) Max.	IDC (A) Max.
SSC04021R0YZF-□□	1.0 $\pm 30\%$	0.5V / 7.96 M	45	1.72
SSC04022R2YZF-□□	2.2 $\pm 30\%$	0.5V / 7.96 M	75	1.32
SSC04022R7YZF-□□	2.7 $\pm 30\%$	0.5V / 7.96 M	105	1.28
SSC04023R3YZF-□□	3.3 $\pm 30\%$	0.5V / 7.96 M	110	1.04
SSC04023R9YZF-□□	3.9 $\pm 30\%$	0.5V / 7.96 M	155	0.88
SSC04024R7YZF-□□	4.7 $\pm 30\%$	0.5V / 7.96 M	162	0.84
SSC04025R6YZF-□□	5.6 $\pm 30\%$	0.5V / 7.96 M	170	0.80
SSC04026R8YZF-□□	6.8 $\pm 30\%$	0.5V / 7.96 M	180	0.76
SSC04028R2YZF-□□	8.2 $\pm 30\%$	0.5V / 7.96 M	190	0.68
SSC0402100YZF-□□	10.0 $\pm 30\%$	0.5V / 100 K	200	0.61
SSC0402120YZF-□□	12.0 $\pm 30\%$	0.5V / 100 K	210	0.56
SSC0402150YZF-□□	15.0 $\pm 30\%$	0.5V / 100 K	240	0.50
SSC0402180YZF-□□	18.0 $\pm 30\%$	0.5V / 100 K	338	0.48
SSC0402220YZF-□□	22.0 $\pm 30\%$	0.5V / 100 K	397	0.41
SSC0402270YZF-□□	27.0 $\pm 30\%$	0.5V / 100 K	441	0.35
SSC0402330YZF-□□	33.0 $\pm 30\%$	0.5V / 100 K	694	0.32
SSC0402390YZF-□□	39.0 $\pm 30\%$	0.5V / 100 K	709	0.30



RoHS Compliant

NOTE : Specifications subject to change without notice. Please check our website for latest information.

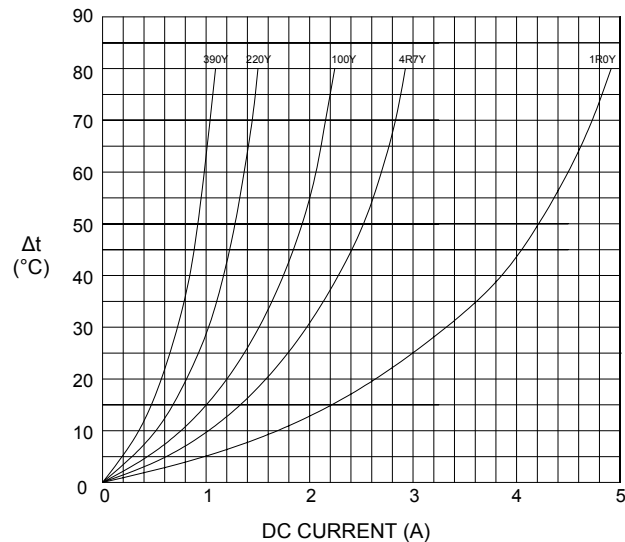
01.10.2010



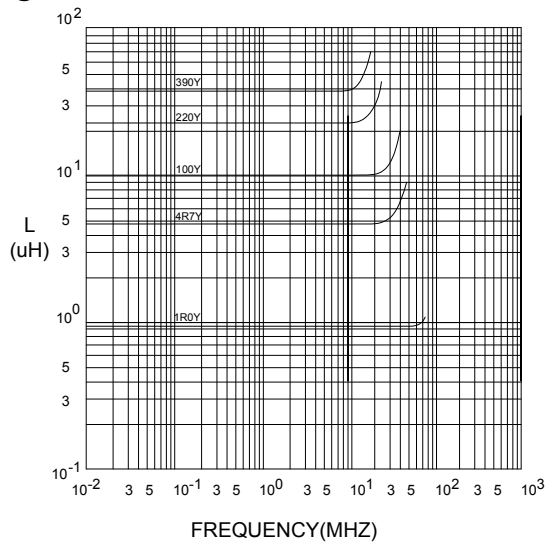
SUPERWORLD ELECTRONICS (S) PTE LTD

7. CHARACTERISTICS CURVES :

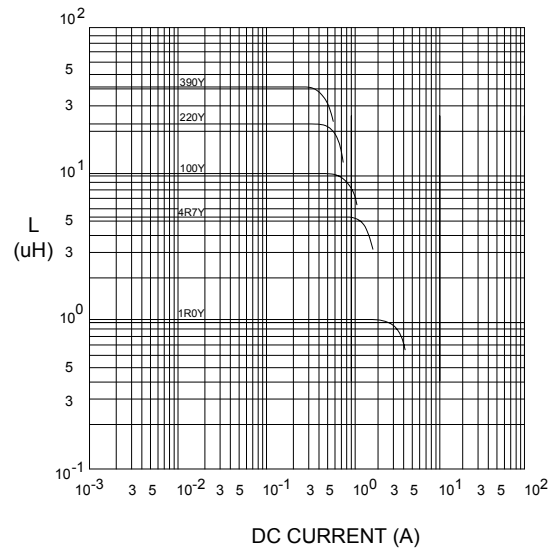
@ TEMP. RISE VS. DC SUPERPOSITION RESPONSE CURVE



@ INDUCTANCE VS. FREQUENCY RESPONSE CURVE



@ INDUCTANCE VS. DC SUPERPOSITION RESPONSE CURVE



NOTE : Specifications subject to change without notice. Please check our website for latest information.



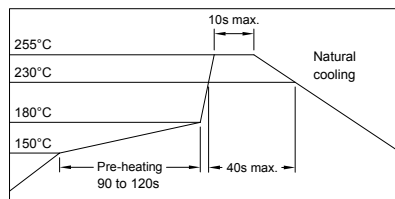
RoHS Compliant

01.10.2010



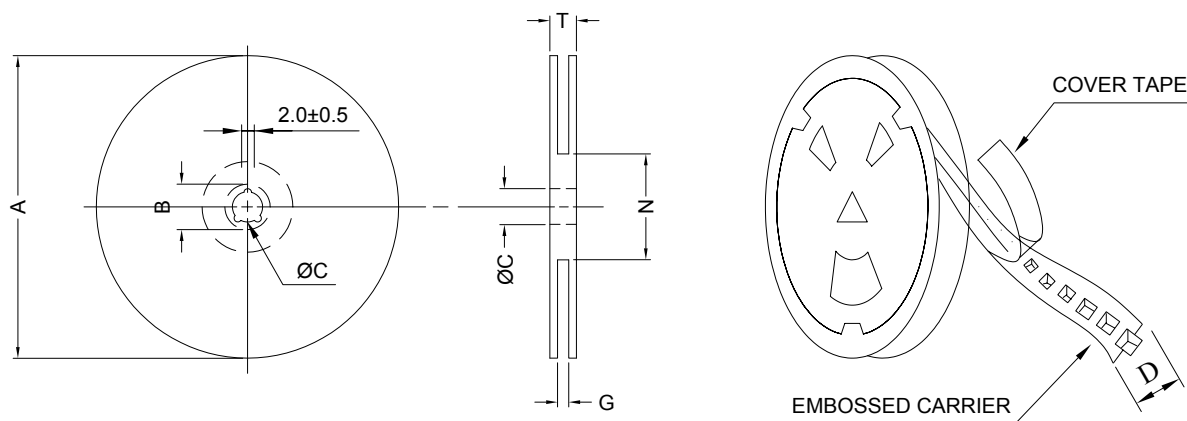
SUPERWORLD ELECTRONICS (S) PTE LTD

RECOMMENDED SOLDERING CONDITIONS REFLOW SOLDERINGS

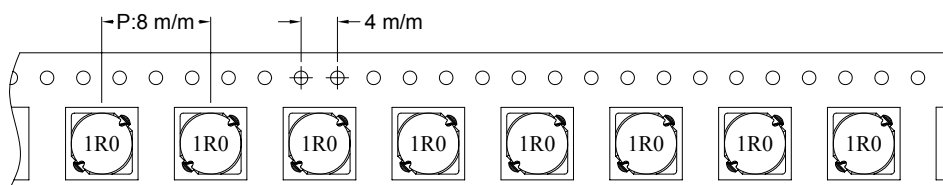


8. PACKAGING INFORMATION :

(1) CONFIGURATION



* CARRIER TAPE WIDTH : D



(2) DIMENSIONS

Unit: m/m

STYLE	A	B	C	D	G	N	T
13-16	330	21±0.8	13	16	18 ⁺⁰	50 ⁻⁰	22.4

(3) Q'TY & G.W. PER PACKAGE

SERIES	INNER : REEL			OUTER : CARTON		
	Q'TY (PCS)	G.W. (gw)	STYLE	Q'TY (PCS)	G.W. (Kg)	SIZE (cm)
SSC0402	3000	2550	13-16	18000	18.8	40 x 40 x 24



RoHS Compliant

NOTE : Specifications subject to change without notice. Please check our website for latest information.

01.10.2010



SUPERWORLD ELECTRONICS (S) PTE LTD

9. RELIABILITY AND TEST CONDITION :

TEST ITEM	SPECIFICATION	TEST CONDITION
SOLDERABILITY	MORE THAN 90% OF THE TERMINAL ELECTRODE SHALL BE COVERED WITH FRESH SOLDER.	PREHEAT : 125±25°C FOR 60 SECONDS SOLDER : 99%Sn/0.3%Ag/0.7%Cu OR EQUIVALENT SOLDER TEMP. : 245±5°C FLUX : ROSIN DIP TIME : 4±1 SECONDS
THERMAL SHOCK TEST (TEMP. CYCLE)	INDUCTANCE SHALL NOT CHANGE MORE THAN ±20%	ROOM TEMP. —————→ -25±2°C 15 MINUTES 30 MINUTES ROOM TEMP. —————→ 85±2°C 15 MINUTES 30 MINUTES TOTAL : 50 CYCLES
HUMIDITY RESISTANCE TEST		TEMPERATURE : 40±2°C HUMIDITY : 90 ~ 95% APPLIED CURRENT : PER SPEC. TIME : 500 HOURS
HIGH TEMP. RESISTANCE TEST		TEMPERATURE : 85±2°C APPLIED CURRENT : PER SPEC. TIME : 500 HOURS

10. UL CARD :

OBMW2		November 30, 2000	
Magnet Wire - Component			
PACIFIC ELECTRIC WIRE & CABLE (SHENZHEN) CO LTD 607 BAOLONG INDUSTRIAL ESTATE LONGGANG, SHENZHEN GUANGDONG CHINA			E201757
Mtl Dsg	BC	Coating Type	ANSI Type
UEW/U	Polyurethane	TC	TI
PEW/U	Polyester	—	130
PEWH/U	Modified Polyester	—	MW5-C 155°C
PEW-NY/U	Polyester	Polyamide	MW30-C 180
HAI/U	Polyester(Amide)(Imide)	Polyamideimide	MW24-C 155
UEW-NY/U	Polyurethane	Polyamide	MW35,73 200
			MW80-C 155
			MW28-C 130
Marking: Company name and material designation or marked designation on package or reel, and Recognized Component Mark.			
See General Information Preceding These Recognitions			
1/3/2001	Underwriters Laboratories Inc.		Card 1 of 2



RoHS Compliant

NOTE : Specifications subject to change without notice. Please check our website for latest information.

01.10.2010



SUPERWORLD ELECTRONICS (S) PTE LTD

PG. 5