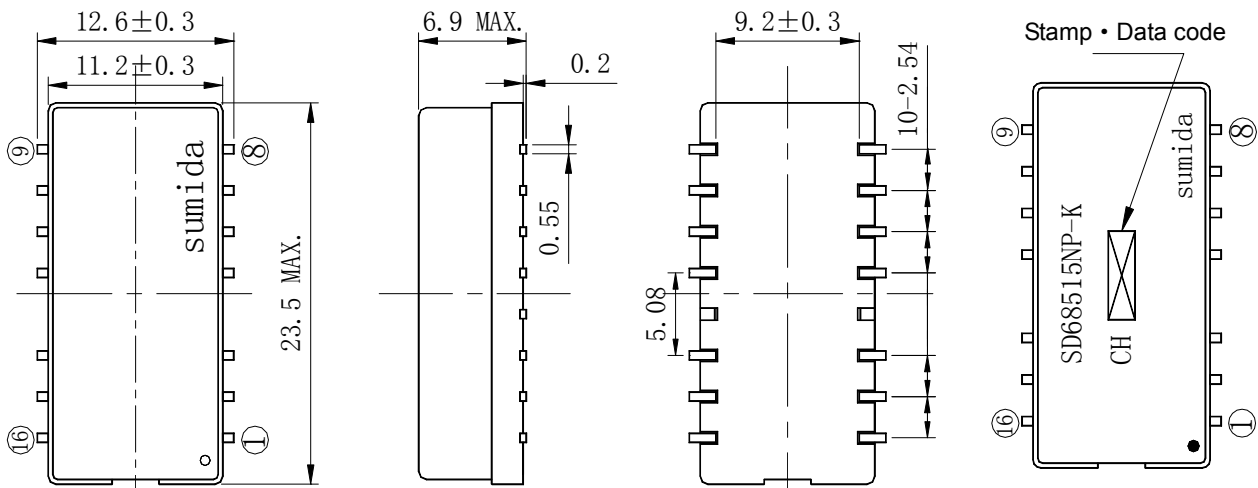
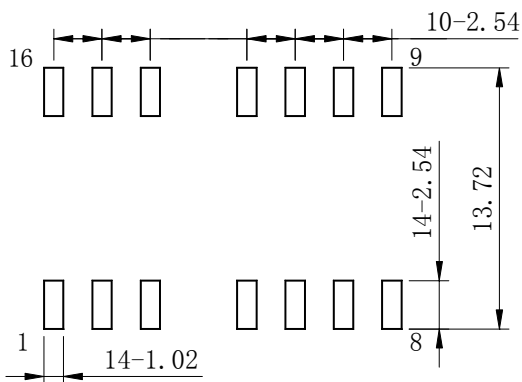
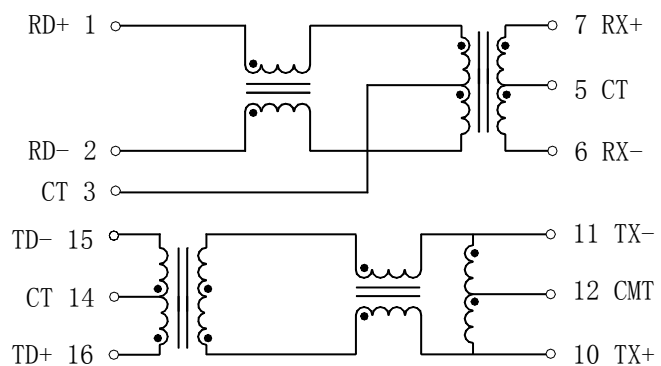


**Type: CLP236**
**◆ Product Description**

- 23.5mm×11.5mm Max. (L×W),6.9mm Max. Height.
- Pulse transformer + filter module for LAN 10/100 Base-T(IEEE802.3).
- In addition to the typical parameters shown here, custom designs are available.


**◆ Feature**

- 10/100Base-T discrete single port modules.
- Ideally used in LAN and PoE-enabled LAN applications, router, Hub, switch, etc.
- RoHS Compliance.

**◆ Dimensions (mm)**

**◆ Land Pattern (mm)**

**◆ Schematics(Bottom)**


**Type: CLP236**
**◆ Specification**

Part No.	Turns Ratio	
	RX	TX
SD68515NP-K	1CT:1CT	1CT:1CT
SD68517	1CT:1CT	1CT:1CT
SD49783	1CT:1CT	1.4CT:1CT
SD1013	1CT:1CT	1.4CT:1CT
SD49743	1CT:1CT	2CT:1CT

**Parameters(SD68515NP-K)**

		SPECIFICATION		CONDITION
		(TX)	(RX)	
Inductance	(1-2)/(15-16)	350 $\mu$ H Min.	350 $\mu$ H Min.	100kHz, 100mV, 8mA DC bias
Insertion Loss		-1.0dB Min.	-1.0dB Min.	0.1~100MHz
Return Loss		-18.0dB Max.	-18.0dB Max.	1~30MHz
		-18.0dB Max.	-18.0dB Max.	40MHz
		-16.0dB Max.	-16.0dB Max.	50MHz
		-12.0dB Max.	-12.0dB Max.	60~80MHz
Common Mode Rejection		-43.0dB Max.	-43.0dB Max.	30MHz
		-43.0dB Max.	-43.0dB Max.	60MHz
		-40.0dB Max.	-40.0dB Max.	100MHz
Cross Talk		-55.0dB TYP.	-55.0dB TYP.	30MHz
		-50.0dB TYP.	-50.0dB TYP.	60MHz
		-50.0dB TYP.	-50.0dB TYP.	100MHz
Hipot	(1-2)-(7-6), (15-16)-(11-10)	AC 1500Vrms		1Minute