

HIRSCHMANN MOBILITY

WLAN (2,4GHz) Adhesive Antenna



WLAN 24 PA A/series
Pt no.
951-002-...

Subject to alterations

- Simple installation on the window screen by means of an adhesive pad
- For WLAN networks (2,4GHz)
- M2M application - telemetering, remote, maintenance, ...

Technical data

Electrical Specification

Frequency range	Bluetooth:	2400 - 2484 MHz
	IEEE 802.11 b, g:	2412 - 2484 MHz
Impedance		50 Ohm
VSWR / Return loss		≤ 2,0 (Dependant of environment)
Gain (linear gain, vertical polarization)		2 dBi*

Mechanical

Dimensions		115 x 22 mm
Housing Materials		ABS
Weight		35 g
Operations temperature range		- 40 + 85° C
Storage temperature range		- 40 + 85 °C
Housing protection class		IP64
Cable type		RG 174

Versions

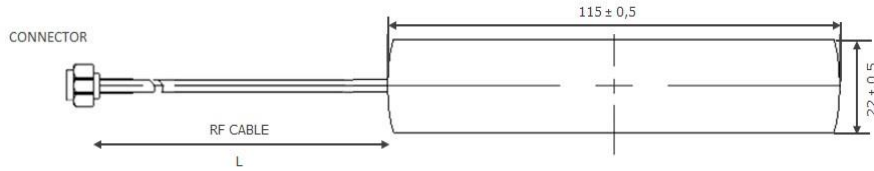
951-002-001	1500mm	Fakra female Coding I (Beige)
951-002-006	1500mm	SMA male straight

*dBi: referenced to an isotropic radiator

WLAN (2,4GHz) ADHESIVE ANTENNA

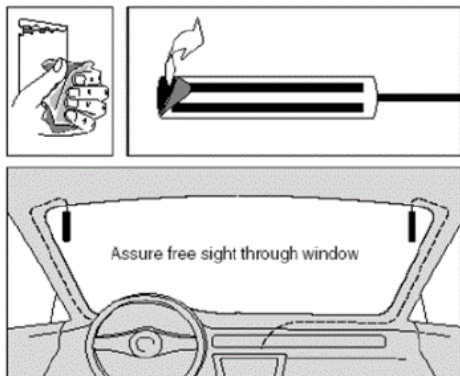
WLAN 24 PA A/series Pt no. 951-002-...

Technical drawing



Installation

- Take the necessary electrostatic precautions for a connection of electronic components (Potential ESD < 1 KV)
- Space must be sufficient (minimum 1cm free around the antenna)
- No metallic (conductive) surface above the antenna
- Connector not waterproof, so area of the connector must be dry
- Screw the nut on the device by hand (Equivalent Torque 1 Nm +0-20%)
- No adjunction of any material (silicones, glue, ...)



www.te.com/hirschmann-mobility

hirschmann-mobility@te.com

TE, TE Connectivity, TE connectivity (logo), and EVERY CONNECTION COUNTS are trademarks.
Hirschmann is a trademark.

Bluetooth is a trademark.

The information given herein, including drawings, illustrations and schematics which are intended for illustration purposes only, is believed to be reliable. However, TE Connectivity makes no warranties as to its accuracy or completeness and disclaims any liability in connection with its use. TE Connectivity's obligations shall only be as set forth in TE Connectivity's Standard Terms and Conditions of Sale for this product and in no case will TE Connectivity be liable for any incidental, indirect or consequential damages arising out of the sale, resale, use or misuse of the product. Users of TE Connectivity products should make their own evaluation to determine the suitability of each such product for the specific application.

© 2018 TE Connectivity Ltd. family of companies All Rights Reserved.