

PLEASE CHECK WWW.MOLEX.COM FOR LATEST PART INFORMATION

Part Number: [0353000452](#)
Status: **Active**
Overview: [kk](#)
Description: 2.50mm (.098") Pitch Wire-to-Board KK® Header, Vertical, with Friction Ramp, Tube Packaged Version of 5045, 4 Circuits, Tin (Sn) Plating, Red

Documents:

[3D Model](#) [Product Specification PS-35300-001 \(PDF\)](#)
[Drawing \(PDF\)](#) [RoHS Certificate of Compliance \(PDF\)](#)

Agency Certification

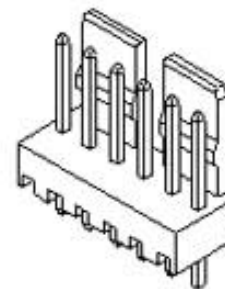
CSA LR 19980
 UL E29179

General

Product Family PCB Headers
 Series [35300](#)
 Application Wire-to-Board
 Overview [kk](#)
 Product Name KK®

Physical

Breakaway No
 Circuits (Loaded) 4
 Circuits (maximum) 4
 Color - Resin Natural
 Durability (mating cycles max) 30
 First Mate / Last Break No
 Flammability 94V-0
 Glow-Wire Compliant No
 Guide to Mating Part No
 Keying to Mating Part None
 Lock to Mating Part Yes
 Material - Plating Mating Tin
 Material - Plating Termination Tin
 Material - Resin Nylon
 Number of Rows 1
 Orientation Vertical
 PCB Locator No
 PCB Retention None
 PCB Thickness Recommended (in) 0.062 In
 PCB Thickness Recommended (mm) 1.60 mm
 Packaging Type Tube
 Pitch - Mating Interface (in) 0.098 In
 Pitch - Mating Interface (mm) 2.50 mm
 Plating min: Mating (µin) 200
 Plating min: Mating (µm) 5
 Plating min: Termination (µin) 200
 Plating min: Termination (µm) 5
 Polarized to Mating Part No
 Polarized to PCB No
 Shrouded No
 Stackable No
 Surface Mount Compatible (SMC) No
 Temperature Range - Operating -40°C to +105°C
 Termination Interface: Style Through Hole



Series

image - Reference only

EU RoHS
ELV and RoHS
Compliant
REACH SVHC
 Not Reviewed
Halogen-Free
Status
Not Reviewed

China RoHS



Need more information on product environmental compliance?

Email productcompliance@molex.com
 For a multiple part number RoHS Certificate of Compliance, [click here](#)

Please visit the [Contact Us](#) section for any non-product compliance questions.

Search Parts in this Series

[35300Series](#)

Mates With

[5051 Housing](#), [51191 Housing](#)

Electrical

Current - Maximum per Contact

3A

Voltage - Maximum

250V

Material Info**Reference - Drawing Numbers**

Packaging Specification

PK-35300-001

Product Specification

PS-35300-001

Sales Drawing

SD-35300-001, SD-35300-011

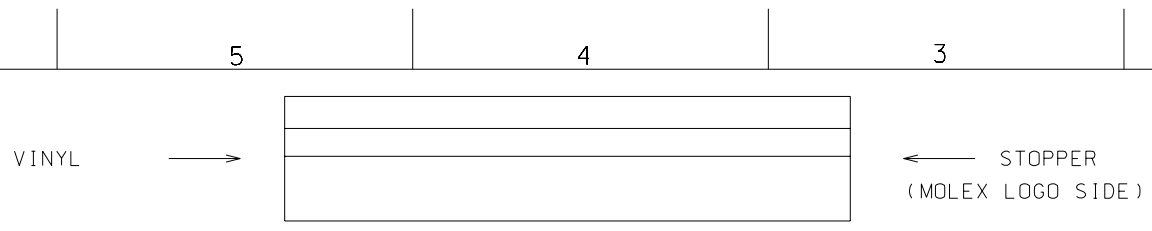
This document was generated on 05/24/2010

PLEASE CHECK WWW.MOLEX.COM FOR LATEST PART INFORMATION

DWG. NO.
SD-35300-001

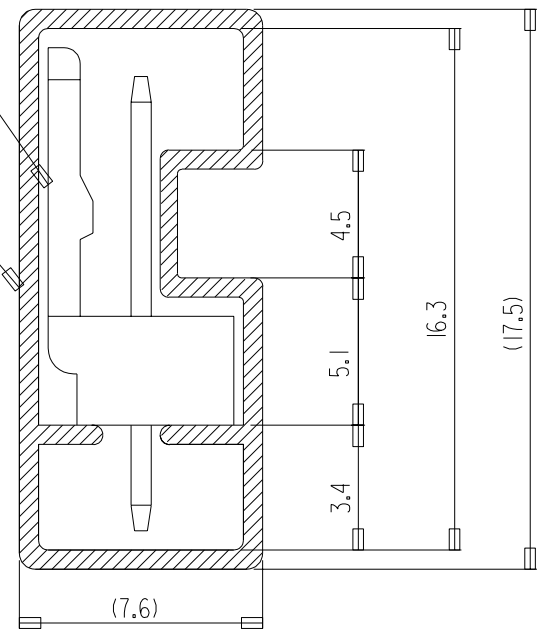
SIMILAR ITEM

PROJECT NO.



5045-NA SERIES

TUBE



NOTES

1. TUBE : STOPPER & VINYL LOCKING TYPE
2. THICKNESS : 0.6⁺
3. LENGTH : 540mm

LEGEND

35300- ** 5 *

COLOR : 0 --- NATURAL
2 --- RED

CKT (02, 03, 04,)

15	35300-155*	35300155*	5045-NA SERIES	
14	-145*	35300145*		
13	-135*	35300135*		
12	-125*	35300125*		
11	-115*	35300115*		
10	-105*	35300105*		
9	-095*	35300095*		
8	-085*	35300085*		
7	-075*	35300075*		
6	-065*	35300065*		
5	-055*	35300055*		
4	-045*	35300045*		
3	-035*	35300035*		
2	35300-025*	35300025*		USED
CKTS	ENG NO.	MAT'L NO.		ON.

NEW RELEASED EC NO. KOR2004-0124 DRWN: K.S.KIM (040324) CH'K: J.K.OH APPR: C.W.LEE	QUALITY SYMBOLS MAJOR = CRITICAL =	GENERAL TOLERANCES: (UNLESS SPECIFIED)		SCALE NONE	DESIGN UNITS <input checked="" type="checkbox"/> mm <input type="checkbox"/> INCH	THIRD ANGLE PROJECTION 	DIMENSIONS: <input type="checkbox"/> mm <input type="checkbox"/> INCH <input type="checkbox"/> mm <input checked="" type="checkbox"/> ONLY	SHT REV
		4 PLACES ±0. ±.	DRAWN BY & DATE H.S.SHIN (910120)	TITLE: TUBE PACKAGED FOR 5045-NA SERIES				
		3 PLACES ±0. ±.	CHECKED BY & DATE J.K.OH					
		2 PLACES ±0. ±.	APPROVED BY & DATE C.W.LEE	MOLEX INCORPORATED				
1 PLACE ±0. ±.	CAD FILENAME SD-35300-001.dgn	MATERIAL NO. SEE TABLE	DRAWING NO. SD-35300-001				SHEET NO. 1 OF 1	
ANGULAR: ± °	DRAFT WHERE APPLICABLE MUST REMAIN WITHIN DIMENSIONS				THIS DRAWING CONTAINS INFORMATION THAT IS PROPRIETARY TO MOLEX INCORPORATED AND SHOULD NOT BE USED WITHOUT WRITTEN PERMISSION.			SIZE A

5

4

3

2

MX-A4

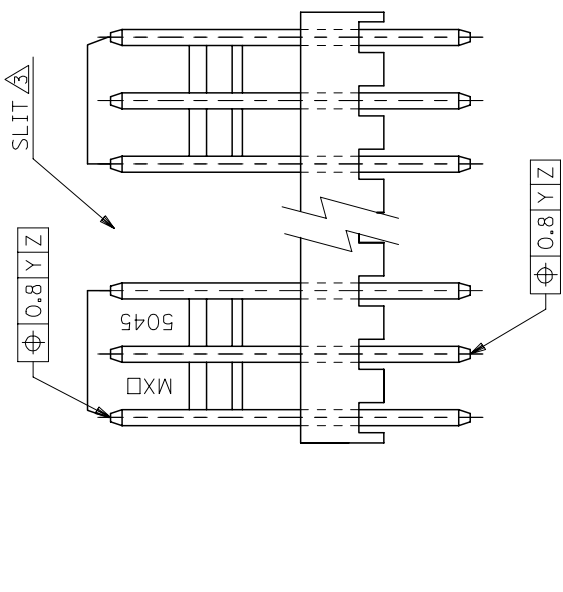
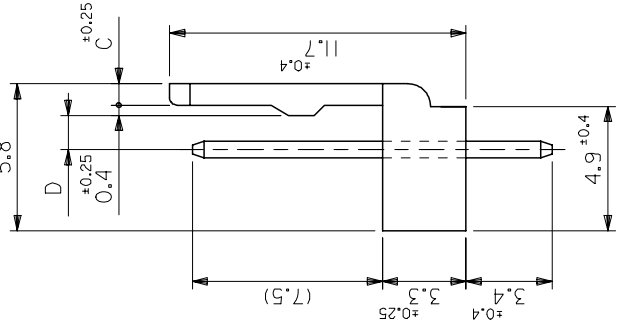
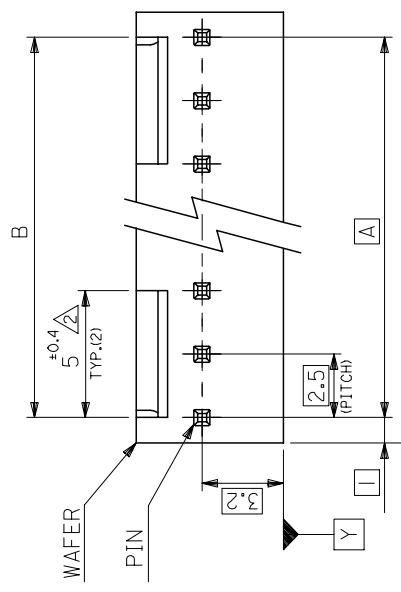
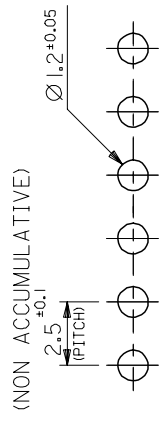
NOTES:

1. MATERIAL

WAFER : 66NYLON, UL94V-0
 PIN : $\square 0.635$ BRASS, TIN OVER COPPER PLATING
 TO BE APPLIED FOR 6CKT. AND MORE THAN 6CKT.
 NO SLIT IS PROVIDED FOR 5CKT. AND LESS THAN 5CKT.
 4. LEGEND

[AFTER TUBE PACKING] [BEFORE TUBE PACKING]
 35300- ** 5 * 5045-NA-**
 CKT NO. DYED COLOR CODE
 2 — RED — RE

RECOMMENDED P.C.B. BOARD HOLE DIM.



1.35	0.85	35	$+0.25$ -0.45	35	39-32-0154	5045-15A-RE	35300-1552	15
\blacktriangle	\blacktriangle	32.5	$+0.25$ -0.45	32.5	\blacktriangle	-14A-RE	35300-1452	14
		30	$+0.25$ -0.45	30	-0134	-13A-RE	35300-1352	13
		27.5	$+0.25$ -0.45	27.5	-0124	-12A-RE	35300-1252	12
		25	$+0.2$ -0.4	25	-0114	-11A-RE	35300-1152	11
		22.5	$+0.2$ -0.4	22.5	-0104	-10A-RE	35300-1052	10
		20	$+0.15$ -0.35	20	-0094	-09A-RE	35300-0952	9
		17.5	$+0.15$ -0.35	17.5	-0084	-08A-RE	35300-0852	8
		15	$+0.1$ -0.3	15	-0074	-07A-RE	35300-0752	7
		12.5	$+0.1$ -0.3	12.5	-0064	-06A-RE	35300-0652	6
		10	$+0.15$ -0.3	10	-0054	-05A-RE	35300-0552	5
		1.35	0.85	7.5	$+0.15$ -0.35	-0044	35300-0452	4
		1.2		5	$+0.15$ -0.35	-0034	35300-0352	3
		1.2		2.5	$+0.15$ -0.35	5045-02A-RE	35300-0252	2
D	C	B	A	EDP NO. ENG. NO.		5045-NA-RE	ENG NO.	CKT

GENERAL TOLERANCES: (UNLESS SPECIFIED)		SCALE		DESIGN UNITS		DIMENSIONS:	
4 PLACES $\pm 0.$	\pm	5:1	\square INCH	\square INCH	\square INCH	\square INCH	SHIT REV
3 PLACES $\pm 0.$	\pm	DRAWN BY & DATE	\square INCH	\square INCH	\square INCH	\square INCH	REVISION ONLY
2 PLACES $\pm 0.$	\pm	K-SKIM (060102)					
1 PLACE $\pm 0.$	\pm	CHECKED BY & DATE					
ANGULAR: \pm	$^\circ$	Y-500/KIM					
DRAFT WHERE APPLICABLE MUST REMAIN WITHIN DIMENSIONS		APPROVED BY & DATE					
		S.H.CHOI					
		CAD FILENAME					
		MATERIAL NO.					
		DRAWING NO.					
		SD-35300-011					
		SHEET NO.					
		1 OF 1					

QUALITY SYMBOLS	DESCRIPTION	APP. REV
MAJOR \blacktriangle		
CRITICAL \blacktriangle		

GENERAL TOLERANCES
ANGLE $\pm 3^\circ$
30 OVER ± 0.3
10 OVER 30 UNDER ± 0.25
10 UNDER ± 0.2

NEW RELEASED	DESCRIPTION	APP. REV
DRWN: K.S.KIM (060102)		
CHK: Y.500/KIM		
APPR: S.H.CHOI		
ECC NO. KOR2006-0082		
A		

DO NOT SCALE DRAWING
 DIMENSION IN METRIC