

Coaxial Power Splitter/Combiner

ZAPD-1750+ ZAPD-1750

2 Way-0° 50Ω 950 to 1750 MHz

Maximum Ratings

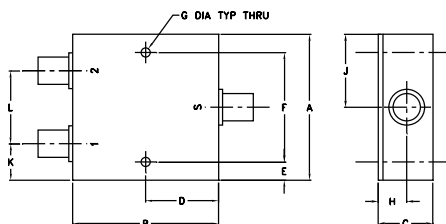
Operating Temperature	-55°C to 100°C
Storage Temperature	-55°C to 100°C
Power Input (as a splitter)	10W max.
Internal Dissipation	0.125W max.

Permanent damage may occur if any of these limits are exceeded.

Coaxial Connections

SUM PORT	S
PORT 1	1
PORT 2	2

Outline Drawing



Outline Dimensions (inch/mm)

A	B	C	D	E	F	G
2.00	2.00	.75	1.00	.25	1.500	.125
50.80	50.80	19.05	25.40	6.35	38.10	3.18
H	J	K	L	wt		
.39	1.00	.50	1.00	grams		
9.91	25.40	12.70	25.40	170.0		

Features

- low insertion loss, 0.2 dB typ.
- high isolation, 30 dB typ.
- up to 10W power input as splitter
- excellent amplitude unbalance, 0.1 dB typ.
- excellent phase unbalance, 0.5 deg. typ.
- excellent VSWR, 1.1:1 typ.
- rugged shield case

Applications

- cellular
- GPS
- satellite distribution
- communications systems

Electrical Specifications

FREQ. RANGE (MHz)	ISOLATION (dB)		INSERTION LOSS (dB) ABOVE 3.0 dB		PHASE UNBALANCE (Degrees)	AMPLITUDE UNBALANCE (dB)	VSWR (:1)	
	Typ.	Min.	Typ.	Max.			S	OUT
f_L - f_U					Max.	Max.	Typ.	Max.
950-1750	30	22	0.2	0.4	4	0.5	1.15	1.5 1.22 1.5

Typical Performance Data

Frequency (MHz)	Insertion Loss (dB)		Amplitude Unbalance (dB)	Isolation (dB)	Phase Unbalance (deg.)	VSWR S	VSWR 1	VSWR 2
	S-1	S-2						
950.00	3.13	3.17	0.04	27.03	0.17	1.17	1.12	1.08
970.00	3.13	3.17	0.05	28.35	0.22	1.16	1.12	1.08
1010.00	3.13	3.17	0.04	31.64	0.19	1.13	1.12	1.08
1050.00	3.12	3.15	0.03	36.45	0.13	1.10	1.11	1.08
1110.00	3.13	3.16	0.03	56.63	0.21	1.06	1.10	1.07
1170.00	3.12	3.14	0.02	38.61	0.06	1.03	1.10	1.06
1230.00	3.15	3.19	0.04	33.63	0.32	1.01	1.09	1.05
1310.00	3.12	3.15	0.03	30.74	0.08	1.03	1.08	1.05
1390.00	3.19	3.21	0.02	30.00	0.28	1.05	1.07	1.05
1470.00	3.12	3.17	0.05	30.63	0.14	1.07	1.07	1.05
1550.00	3.17	3.23	0.06	32.83	0.33	1.09	1.06	1.06
1630.00	3.15	3.19	0.05	35.04	0.27	1.11	1.05	1.06
1670.00	3.17	3.25	0.08	34.13	0.26	1.12	1.05	1.05
1710.00	3.15	3.22	0.07	31.61	0.16	1.13	1.03	1.05
1750.00	3.15	3.23	0.07	28.88	0.27	1.14	1.02	1.05

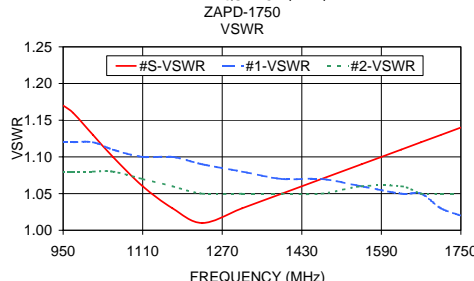
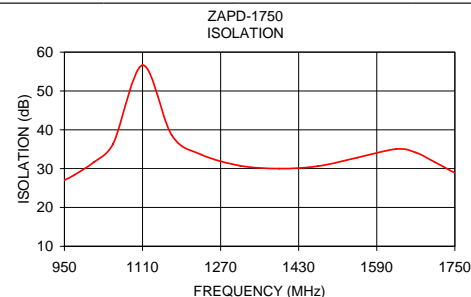
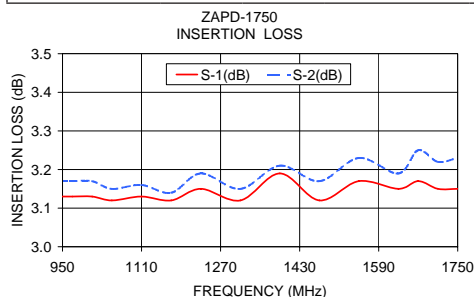


N-Type version shown
CASE STYLE: F14

Connectors	Model	Price	Qty.
N-TYPE	ZAPD-1750-N(+)	\$59.95	(1-9)
SMA	ZAPD-1750-S(+)	\$59.95	(1-9)

+ RoHS compliant in accordance with EU Directive (2002/95/EC)

The +Suffix identifies RoHS Compliance. See our web site for RoHS Compliance methodologies and qualifications.



electrical schematic



Mini-Circuits®
ISO 9001 ISO 14001 AS 9100 CERTIFIED

minicircuits.com

P.O. Box 350166, Brooklyn, New York 11235-0003 (718) 934-4500 Fax (718) 332-4661 For detailed performance specs & shopping online see Mini-Circuits web site



The Design Engineers Search Engine Provides ACTUAL Data Instantly From MINI-CIRCUITS At: www.minicircuits.com

REV. A
M122167
ZAPD-1750
HY/TD/CP
090326

IF/RF MICROWAVE COMPONENTS