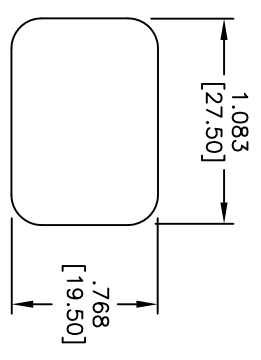
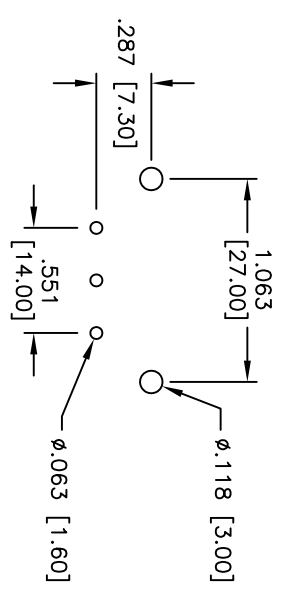
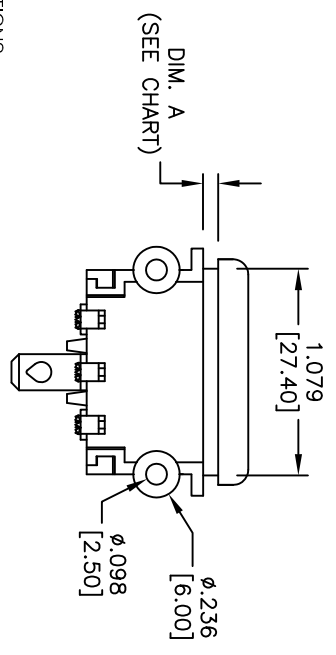
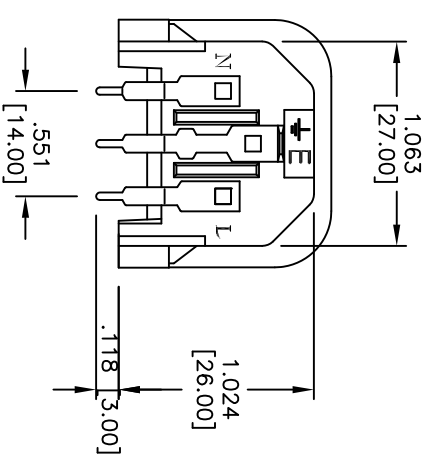
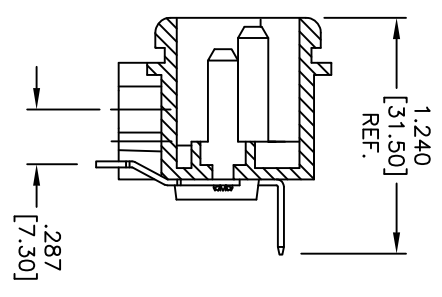
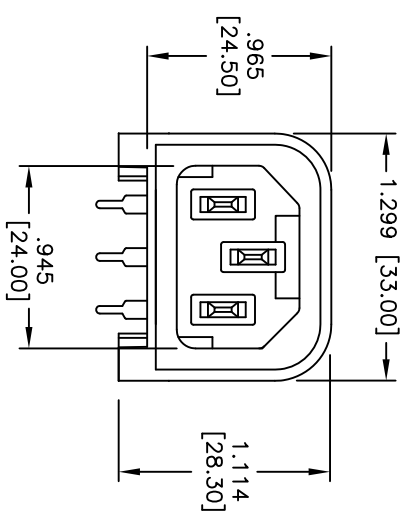


Rev	AWO #	Description	Date	Appr
-		RELEASED	6/15/10	

APPROVED: _____
 DATE: _____ TITLE: _____



RECOMMENDED PANEL CUT-OUT

PART NUMBER	DIMENSIONS
IEC-J-4A-150	.059 [1.50]
IEC-J-4A-200	.079 [2.00]
IEC-J-4A-250	.098 [2.50]
IEC-J-4A-300	.118 [3.00]

SPECIFICATIONS:
 Material: Insulator: Thermoplastic, rated UL 94V-0
 Insulator color: Black
 Contacts: Brass
 Plating: Nickel over Copper underplate overall
 PCB pins: Tin over Copper underplate
 Electrical:
 Operating voltage: 250 VAC
 Current rating: UL & CSA: 15 Amps max
 VDE: 10 Amps max
 Dielectric withstanding voltage: 2,000 VAC for 1 minute
 Temperature Rating:
 Operating temperature: -25°C to +70°C

Environmental:
 Lead free, RoHS compliant
 Recommended soldering temp: 235°C for 5 seconds



UNLESS OTHERWISE SPECIFIED	
ALL DIMENSIONS ARE IN INCHES [MM]	
TOLERANCES: EXCEPT AS NOTED	
INCHES	HOLDS
.X ± .10	ØXX ± .10
.XX ± .020	ØXXX ± .015
.XXX ± .015	ØXXXX ± .010
APPROVALS	DATE
DRAWN	DY
CHECKED	
APPROVED	

ADAM TECH
 909 Rahway Avenue, Union, NJ 07083
 Phone: 908-687-5000 Fax: 908-687-5710

TITLE: IEC MALE INLET, SNAP-IN PANEL MOUNT
 RIGHT ANGLE, PCB TAILS

SIZE	PART NO.	REV.
X	IEC-J-4A-XXX	-
REF: S0080T	SCALE: NTS	SHEET 1 OF 1