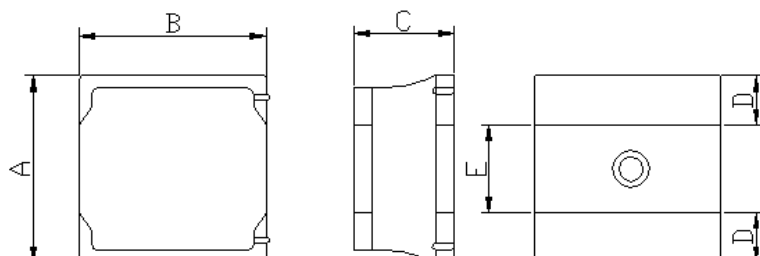


## 1. Features

1. This specification applies Low Profile Power Inductors.
2. 100% Lead(Pb) & Halogen-Free and RoHS compliant.
3. High reliability -Reliability tests comply with AEC-Q200
4. Operating temperature-55~+125°C (Including self - temperature rise)



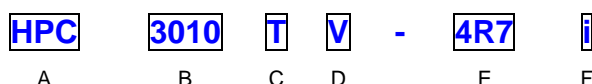
## 2. Dimension



Series	A(mm)	B(mm)	C(mm)	D(mm)	E(mm)
HPC3010TV	3.0±0.2	3.0±0.2	1.0max.	1.0 ref.	1.0 ref.

Units: mm

## 3. Part Numbering



- A: Series  
 B: Dimension  
 C: Lead Free  
 D: Category Code                      V=Vehicle  
 E: Inductance                            4R7=4.7uH  
 F: Inductance Tolerance                M=±20% ; Y=±30%

## 4. Specification

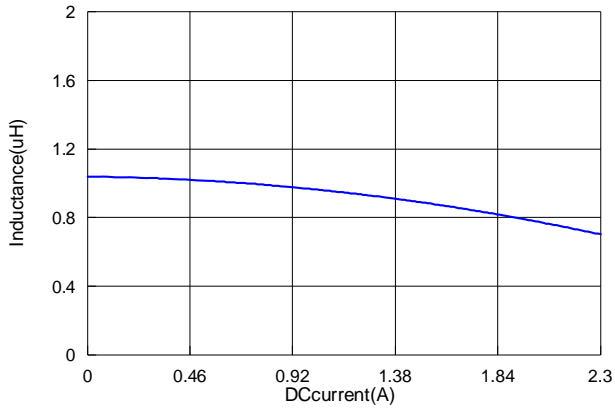
TAI-TECH Part Number	Inductance (uH)	Tolerance (%)	Test Frequency (Hz)	DCR (Ω) ±20%	I sat (A) typ.	I sat (A) max.	I rms (A) typ.	I rms (A) max.
HPC3010TV-1R0Y	1.0	±30%	0.1V/1M	0.055	2.20	1.80	2.50	2.10
HPC3010TV-1R5Y	1.5	±30%	0.1V/1M	0.070	2.00	1.50	2.20	1.90
HPC3010TV-2R2M	2.2	±20%	0.1V/1M	0.090	1.60	1.30	2.10	1.70
HPC3010TV-3R3M	3.3	±20%	0.1V/1M	0.130	1.30	1.10	1.70	1.50
HPC3010TV-4R7M	4.7	±20%	0.1V/1M	0.170	1.20	0.90	1.50	1.30
HPC3010TV-6R8M	6.8	±20%	0.1V/1M	0.260	0.90	0.77	1.30	1.00
HPC3010TV-100M	10	±20%	0.1V/1M	0.350	0.75	0.63	1.00	0.80
HPC3010TV-150M	15	±20%	0.1V/1M	0.510	0.65	0.54	0.80	0.70
HPC3010TV-220M	22	±20%	0.1V/1M	0.750	0.55	0.43	0.75	0.60

Note:

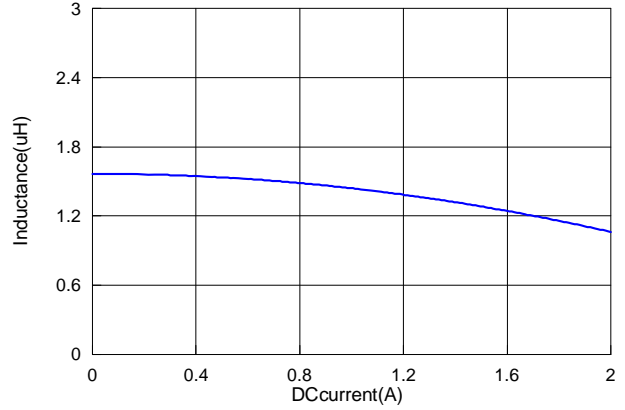
Isat : Based on inductance change (ΔL/L0 : ≤30%) @ ambient temp. 25°C

Irms : Based on temperature rise (ΔT : 40°C.) Max

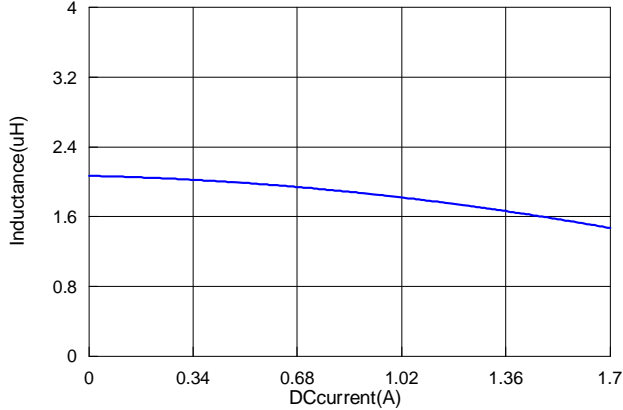
HPC3010TV-1R0



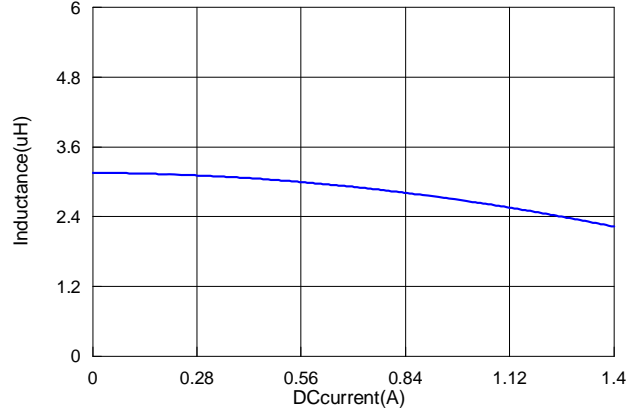
HPC3010TV-1R5



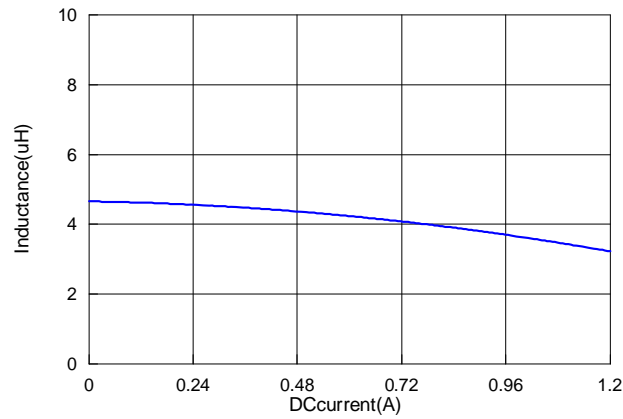
HPC3010TV-2R2



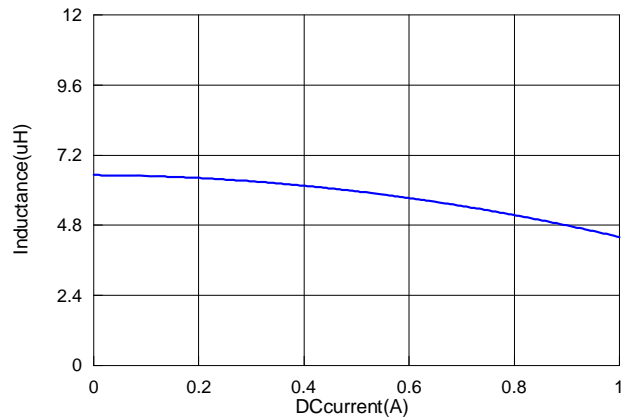
HPC3010TV-3R3



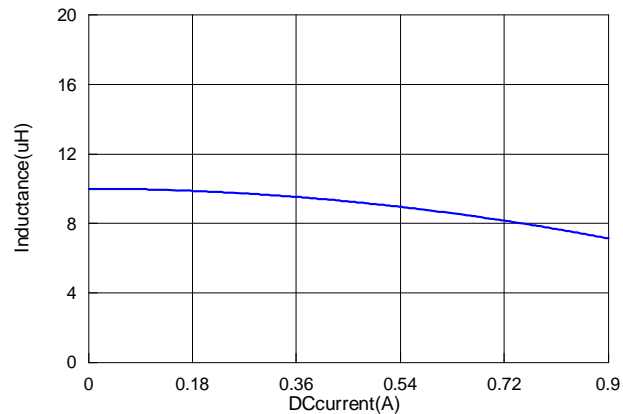
HPC3010TV-4R7



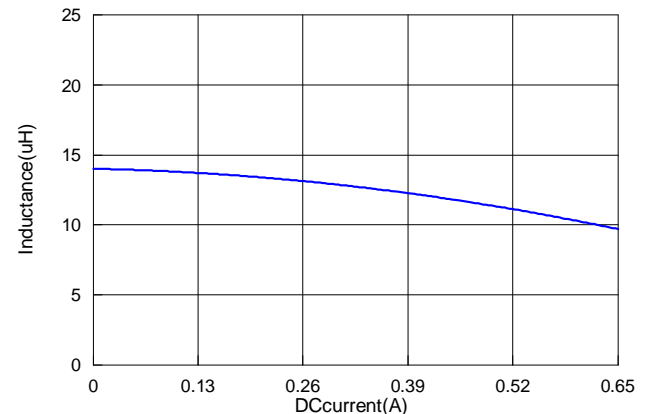
HPC3010TV-6R8



HPC3010TV-100



HPC3010TV-150



HPC3010TV-220

