



Data Sheet



Product Category: RF SAW Filter

Part Number	Package	Application	Last Modified
805-RF434.42M-B	5.0 x 5.0 SMD	Remote Control	Jan. 01, 2007

TYPE :

Remote Control, RF SAW Filter



PART NUMBER :

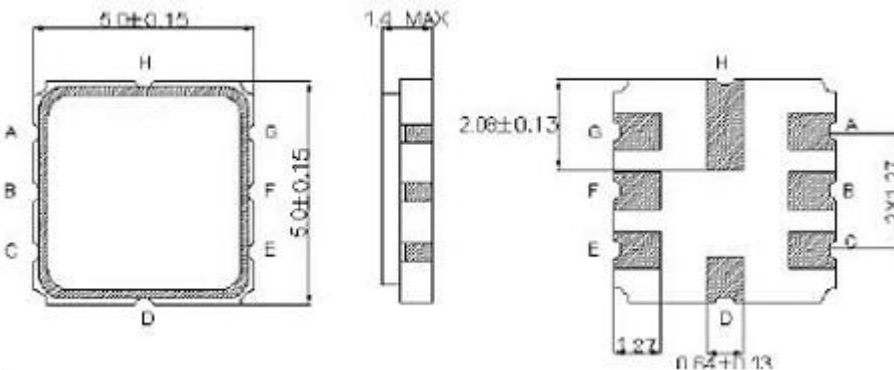
805-RF434.42M-B

OPERATING CONDITIONS / ELECTRICAL CHARACTERISTICS

PARAMETERS	Condition	Minimum	Typical	Maximum	Units
Center Frequency (Fo)	-	-	434.42	-	MHz
Insertion Loss	434.30 ~ 434.54 MHz	-	2.0	4.5	dB
Relative Attenuation:	10.0 ~ 415.0 MHz	45	50	-	dB
	415.0 ~ 429.0 MHz	40	45	-	
	429.0 ~ 433.42 MHz	15	20	-	
	435.42 ~ 443.0 MHz	10	15	-	
	443.0 ~ 550.0 MHz	35	40	-	
	550.0 ~ 1000.0 MHz	45	50	-	
Source Impedance (single ended)*	-	-	50	-	ohm
Load Impedance (single ended)*	-	-	50	-	ohm
Pass Band Ripple	434.30 ~ 434.54 MHz	-	1.0	2.0	-
Maximum DC Voltage	-	-	-	10	V
Maximum Input Power	-	-	-	10	dBm
Operating Temperature	-	-40	-	+85	°C

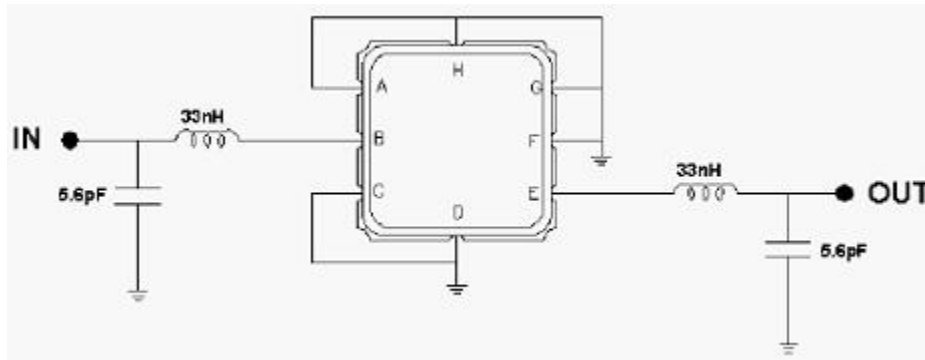
* With Matching Network

PACKAGE OUTLINE (mm)

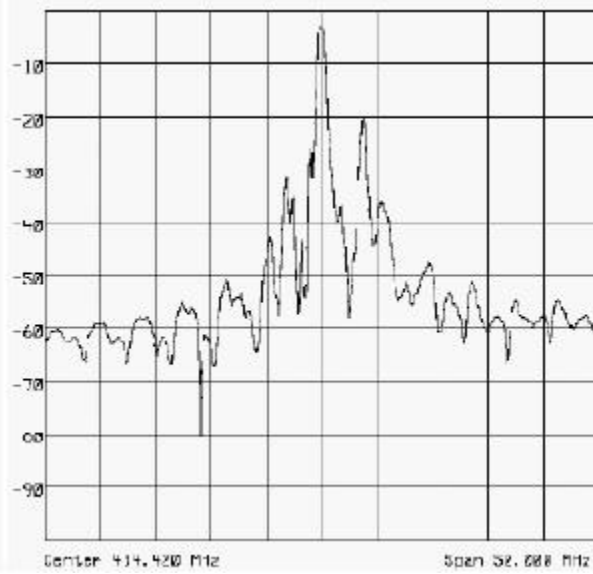
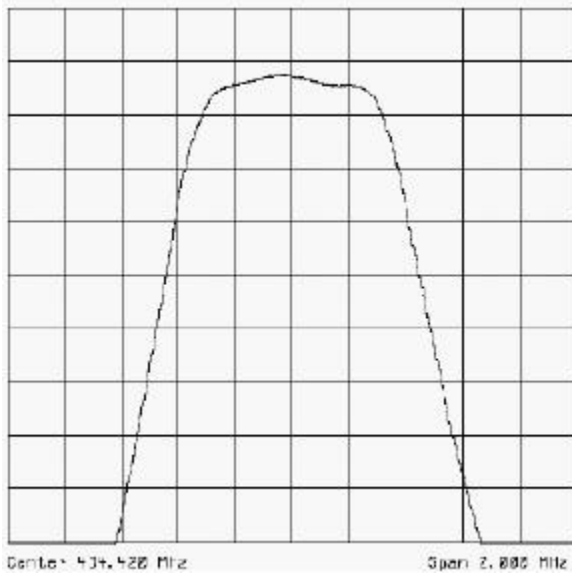


PIN LAYOUT	
A	Ground
B	In
C	Ground
D	Ground
E	Out
F	Ground
G	Ground
H	Ground

TEST FIXTURE



FREQUENCY RESPONSE



Oscilent Corporation - CALL 949.252.0522

Part No.: 805-RF434.42M-B

18195 East McDermott Street, Building D, Irvine, CA 92614, USA
 Fax: 949.252.0599, E-Mail: Sales@Oscilent.com