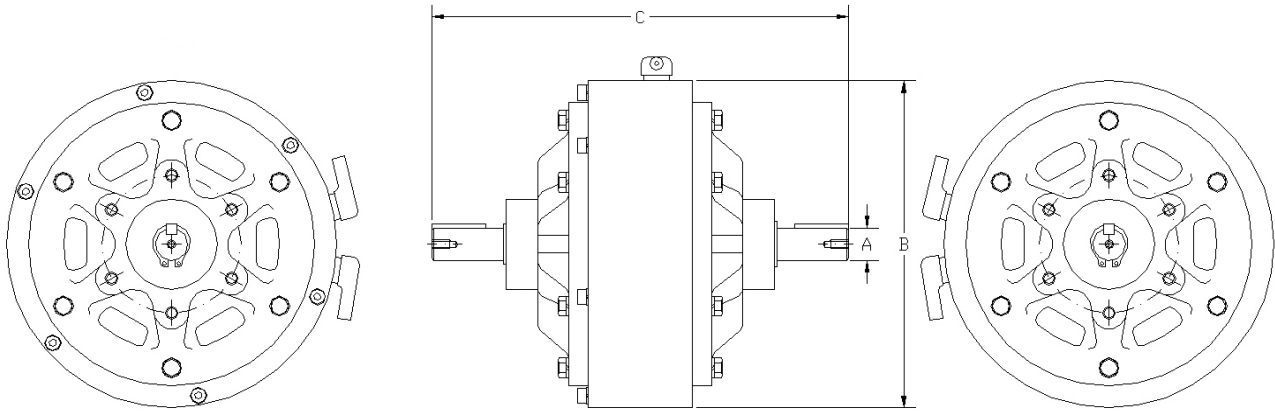


PC

EM Magnetic Particle Clutch

Types: 1.2, 2.5, 5, 10, 20

[EM: Electromagnet]



PC		1.2	2.5	5	10	20
Rated Torque [ft-lbs / N-m]		8.9 / 12	18 / 25	37 / 50	74 / 100	148 / 200
Coil (75°C)	Voltage [DC-V]	24				
	Current [A]	1.4	1.9	2.8	3.6	3.8
	Wattage [W]	42	56	82	105	112
Max Allowable Speed [rpm]		1800	1800	1800	1800	1800
Max Natural Heat Dissipation [W]	100rpm	100	130	160	250	350
	1000rpm	100	130	250	400	700
Max Forced Heat Dissipation [W]		200	240	400	800	1400
Air Pressure ¹ [kg/cm ²]		0.3	0.5	1	1.4	1.5
Air Volume ¹ [m ³ /min]		0.2	0.3	0.6	1.1	1.6
A [mm]		15	20	25	30	35
B [mm]		152	182	218	290	335
C [mm]		192	230	294	360	408
Weight [lbs / kg]		17 / 8	28 / 13	43 / 20	94 / 43	158 / 72

[Note 1 : Air flow specifications for forced heat dissipation]

[1" = 25.4mm]